

NUOVI SOCI

- Sig. Patrizio U. BÉDON (Socio Studente), Corso Firenze 39 c, Genova, presentato dal prof. G.M. Ghidini (*Coleoptera*).
- Sig. Giorgio CAPPELLARO (Socio Studente), Via Gasparo da Salò 11, Milano, presentato dal prof. C. Conci (*Coleoptera*).
- Avv. Tullio CASTELLANI, Via Crivelli 14, Milano, presentato dal prof. C. Conci (*Coleoptera* ed *Lepidoptera*).

CAMBIAMENTI D'INDIRIZZO

Rag. Luciano SAULI, Via dell'Agro 6/2, Trieste.

PREMIO « A. GARBINI » PER RICERCHE DI ZOOGEOGRAFIA
E FAUNISTICA ITALIANA

E' stato bandito il premio « A. Garbini » di L. 60.000, dedicato a ricerche di Zoogeografia e Faunistica Italiana.

La scadenza per la presentazione della domanda e dei titoli è il 30 settembre 1958.

Per ulteriori informazioni rivolgersi alla Direzione del Museo Civico di Storia Naturale di Verona, Lungadige Porta Vittoria 9.

IL PREMIO « DOTT. GIUSEPPE BORGIA » AL PROF. G. COLOMBO

L'Accademia dei Lincei nel giudicare i candidati al Premio « Fondazione Dott. Giuseppe Borgia », di L. 500.000, per il 1957, ha giudicato come primi ex aequo i nostri Soci, coi quali ci congratuliamo vivamente:

Prof. Giuseppe COLOMBO, dell'Istituto di Zoologia dell'Università di Padova, per le sue ricerche di citologia ed embriologia e sul determinismo genetico dell'*Anacridium aegyptium*.

Dr. Renzo STEFANI, dell'Istituto di Zoologia dell'Università di Cagliari, per i risultati ottenuti nelle ricerche sulla cariolologia, biologia e sistematica degli Embiotteri. Ha assegnato il premio al prof. Colombo, perchè più giovane.

COMUNICAZIONI SCIENTIFICHE

R. LINNAVUORI

ON SOME NEW OR LITTLE KNOWN
MEDITERRANEAN HOMOPTERA1. *Chloriona unicolor* (H.S.) (*Delphacidae*)

I have examined some specimens of a *Chloriona* species from Aldeno, Italy (TAMANINI leg.) apparently belonging to *C. unicolor* (H.S.), a species that previously has been incompletely known. All of the species of the genus are externally much alike, the best differences being found in the male genital characters. The male genitalia of *C. unicolor* resemble much those of *C. vasconica* RIB. excluding the much dissimilarly shaped anal tube (fig. 1 a,b) that is short and broad and provided with a pair of long, slightly curved slender processes.

2. *Calligypona obtusangula* Lv. (*Delphacidae*)

The species was recently described by me (1957, p. 51-52) from Lago di Alimini, Puglie, Italy. After that I have seen specimens also from Cyprus (15),

MAVROMOUSTAKIS leg.) and from Rehovot, Israel (1♂, SWIRSKI leg.). *C. obtusangula* seems so to have an East-Mediterranean distribution.

3. *C. isis* n. sp.

Length 1.5. mm. Face coffee-brown; anteclypeus pale yellow. Eyes light grey. Vertex, pronotum and scutellum yellow-brown. Elytra transparent, brownish. Dorsal surface of abdomen dark coffee-brown, basal tergites and dorsal part of pygofer and of the preceding tergite yellow-brown. Under surface brownish. Legs yellow-brown.

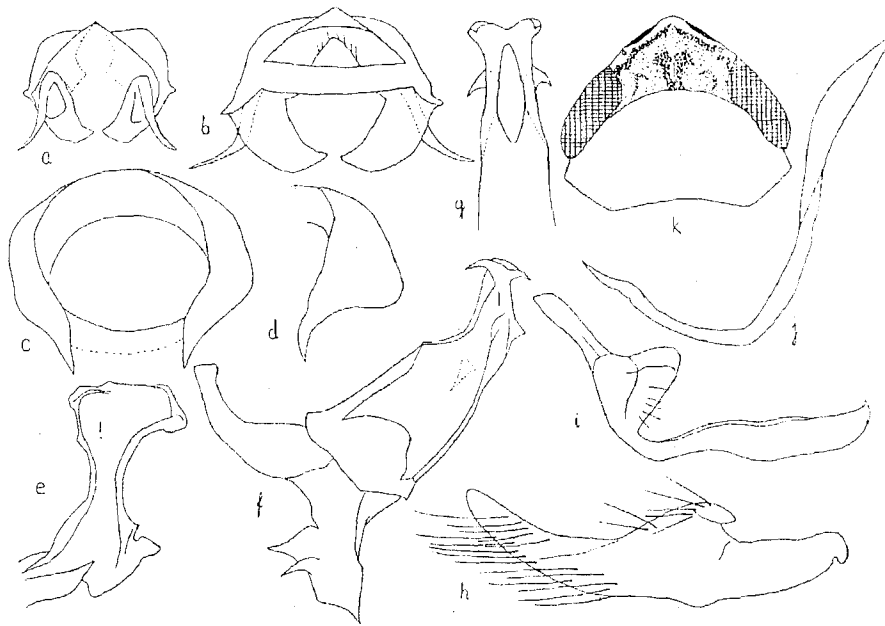


Fig. 1. *Chloriona unicolor* (H.S.): a) anal tube, ventr. asp.; b) same, dors. asp. *Calligypona isis* n. sp.: c) anal tube, caud. asp.; d) same, lat. asp.; e) stylus; f) penis, lat. asp.; g) apex of the same, dors. asp. *Batrachomorplus glaber* HPT.: h) genital plate; i) stylus; j) appendage of the pygofer. *Streptopyx tamaninii* n. sp.: k) head and pronotum. Orig.

Body very small, but relatively robust. Frontoclypeus rather short, only about $1,2\times$ as long as broad, distinctly convex, shining; lateral margins conspicuously curved, the frontoclypeus is thus broadest just between the lower angles of the eyes; median keel faint, invisible on apex of the head. Antennae thick and rather long. Vertex short and rather broad being about as broad as the eye, of uniform length, conspicuously sloping anteriorly, keels rather faint. Pronotum as long as vertex, keels rather faint. Scutellum slightly longer than pronotum, faintly keeled. Elytra short, overlapping only the basal tergites of the abdomen, nearly quadrangular, truncate apically.

Male genitalia: Pygofer (caudal view) nearly circular, only faintly excavated ventrally, lateral ventral angles blunt and obtuse; caudal margin of pygofer (lateral view) nearly straight. Styles (fig. 1e) short, strongly enlarged apically.

Anal tube (fig. 1c, d) rather small, appendages short and claw-like. Penis (fig. 1f, g) small, apex with paired claw-like processes.

♀ unknown.

Locality of finds: Egypt, Luxor, 1 ♂, the type, J SAHLBERG leg. Type in my collection.

C. isis is easily distinguished from the other small species of the genus in the colouring, the structure of the head and in the male genitalia.

4. *Cercopis arcuata* (FIEB.) v. *pallida* Manc. (*Cercopidae*)

As the nominate form, but elytra with dirty yellow-brown markings (red in the nominate form).

Locality of finds: Italy, Genoa, Bavari, 1 ♀, 17.IV. 1948, SANFILIPPO leg.

5. *Batrachomorphus glaber* HPT. (*Cicadellidae*)

HAUPT (1927) has described the species *Batrachomorphus glaber* from Palestine, however, without a description of the internal genital characters of the male. As I have been able to examine some specimens of *B. glaber*, I give the following redescription:

Male genitalia: Side lobes of pygofer provided with a long, slender, curved and sharp-tipped appendage as in fig. 1 j. Genital plates (fig. 1h) narrow, faintly curved and densely covered with long and fine hairs. Stylus (fig. 1i) with apophysis rather straight and conspicuously narrowing basally. Penis (fig. 2a) finger-shaped.

Locality of finds: Israel, Rehovot, 2 spp., 12.X.1956, SWIRSKI leg.

B. flavovirens LDB. (LINDBERG, 1948, p. 134-136) from Cyprus is identical with *B. glaber* HPT. n. syn.

6. *Streptopyx* n. gen. (*Cicadellidae*)

Body rather small, relatively robust and depressed. Colouring ochraceous with dark markings. Head as broad as pronotum. Face broad. Anteclypeus parallel-sided, faintly convex. Lora normal; genae rather broad, only faintly notched below eyes; ocellocular area rather broad. Crown roundedly angled, distinctly longer medially than next eyes, anterior margin rounded to the face; frontal and discal regions not separated, entire crown densely scale-like microsculptured; coronal suture distinct, postfrontal suture absent. Ocelli small, about 3x their own diameter from the eyes. Pronotum broad, lateral margins very short, disc transversely furrowed. Elytra as long as (♂) or shorter than (♀) the abdomen, appendix reduced, 2 closed subapical cells, no extra cross-veins. Flying wings as long as elytra. Spinulation of fore tibiae 1+4; of hind knees 2+2+1.

Male genitalia: Pygofer heavily sclerified, black, incised dorsally near to the base; side lobes narrow, ending in a sharp spine-like process, macrosetae apparently absent. Anal tube very large, oval, reaching to the apex of the pygofer, heavily sclerified, black. Valve broad and rounded. Genital plates short, broad-triangular, lateral margins rounded; macrosetae slight, uniseriate, arising rather far from the lateral margin. Styles robust, nearly as long as the plates, apophysis stout and straight, preapical angle blunt and rather obtuse, basal part broad. Connective very robust, somewhat shorter than the penis, Y-shaped, not fused. Penis symmetrical, socle quadrangular, stem arising from the central part of the socle, long and curved dorsad, provided with long apical appendages; gonopore

subapical on the dorsal surface. Hind margin of the 7th sternite (♀) broadly insinuated.

Typ. gen.: *S. tamaninii* Lv.

The new genus resembles much *Rhopalopyx* RIB. in the structure of the anal tube and the pygofer, but differs in numerous characters e.g. in the structure of the head, in the body form, in the colouring and in the other genital characters. Externally it resembles also the genus *Streptanus* RIB. and its allies, but differs much in the structure of the genitalia.

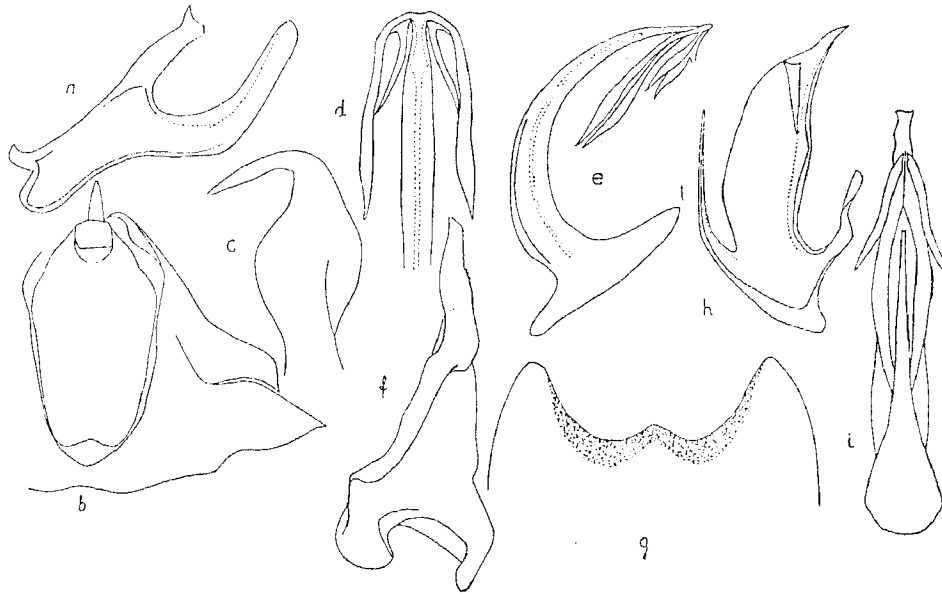


Fig. 2. *Batrachomorphus glaber* HPT.: a) penis, lat. asp. *Streptopyx tamaninii* n. sp.: b) pygofer and anal tube, dors. asp.; c) side lobe of the pygofer, ventr. asp.; d) apex of the penis, ventr. asp.; e) penis, lat. asp.; f) stylus; g) 7th sternite (♀). *Thamnotettix zelleri* (KBM.) ssp. *seclusus* n. ssp.: h) penis, lat. asp.; i) same, ventr. asp. Orig.

***S. tamaninii* n. sp.**

Length 3.5-4 mm. Face black with sides of anteclypeus and lateral arcs and median stripe of frontoclypeus yellow-brown (♂) or yellow-brown with dark brown lateral arcs on the frontoclypeus (♀). The dirty whitish fore margin of crown bordered by dark brown, other parts of crown ochraceous with 4 ± distinct dark brown spots (fig. 1c). Pronotum and scutellum ochraceous (♀) or irrorated with dark brown (♂). Elytra ochraceous; veins concolorous, ± broadly bordered by dark brown. Dorsal surface of abdomen black, under surface black (♂) or black-brown (♀) with genital segment and margins of the other segments ochraceous. Legs light brown.

Body form as above. Male genitalia: Side lobes of pygofer (fig. 2b,c) narrow, ending in a sharp-tipped process turned mesad. Anal tube (fig. 2b) very large, oval. Genital plates short, broad-triangular. Stylus (fig. 2f) with apophysis stout and straight, minutely dentate in the median margin, preapical angle blunt. Penis as in fig. 2d,e, socle quadrangular, stem long and curved dorsad, flattened ven-

trally, carinate dorsally; apical appendages long, bifurcate, directed basad. 7th sternite (♀) (fig. 2g) broadly insinuated and slightly produced in the middle, hind margin bordered by dark brown.

Locality of finds: Italy, Trentino, P. Rolle, 1950 m., 1 ♂ (type) and 2 ♀♀ on *Graminaceae* from a meadow (allotype and paratype), 28.VI.1950, TAMANINI leg. Type and allotype in my collection, paratype in coll. TAMANINI.

I wish to name the new species after its collector, the prominent Italian Hemipterist, L. TAMANINI, Rovereto.

7. *Thamnotettix zelleri* (KDM.) ssp. *seclusus* n. ssp. (*Cicadellidae*)

As the nominate form, but penis (fig. 2h,i) with stem much broader (lateral aspect), apex sharper and appendages distinctly longer and directed basad. The male genitalia of the nominate form have been described by RIBAUT (1952, p. 117-118).

Locality of finds: Israel, Rehovot, 1 ♂ (type), 1 ♀ (allotype) and numerous paratypes, 15.VIII.1956 - 27.III.1957, Swirski leg. Type, allotype and paratypes in my collection, paratypes also in coll. SWIRSKI.

The nominate form occurs (RIBAUT, op. c.) in South Europe and North Africa.

LITERATURE

- HAUPT H. - Homoptera Palestinae I. - The Zionist Organisation. Inst. of Agriculture and Nat. Hist. Bull. 8, 1927.
 LINDBERG H. - On the insect fauna of Cyprus II. Heteroptera und Homoptera Cicadina der Insel Zypern. - Soc. Scient. Fenn. Comment. Biol. X, 7, 1948, pp. 1-175.
 LINNAVUORI R. - Remarks on some Italian Delphacidae. - Boll. Soc. Ent. Italiana LXXXVII, 1957, pp. 49-52.
 RIBAUT H. - Homoptères Auchénorhynques II. - Faune de France 57, 1952, pp. 1-474.

P. CARLO BRIVIO

SULL'ACCERTATA PRESENZA IN ITALIA DI
PHYLLODECTA VULGATISSIMA (L.) SUFFR. E DATI SULLA
 MORFOLOGIA ADDOMINALE DELLE *PHYLLODECTA* ITALIANE

(Col. *Chrysomelidae*)

Nel corso di ricerche sulla coleotterofauna del Lago di Sartirana Briantea (Brianza orientale, prov. di Como), rinvenni numerosi esemplari di *Phyllodecta* che, secondo le tabelle di MÜLLER (1949-53, pag. 432), dovevano ascrivere alla specie *vulgatissima* (L.) Suffr. Per maggior sicurezza inviai alcuni esemplari al Prof. G. Müller, che gentilmente confermò la mia determinazione e mi consigliò di pubblicare una breve nota sul ritrovamento di questa specie, che risulta interessantissima.

Alla notizia del ritrovamento ho creduto opportuno aggiungere alcune osservazioni e disegni, allo scopo di illustrare brevemente gli organi copulatori maschili, le spermateche e gli uriti femminili sia della *vulgatissima* che delle altre tre specie di *Phyllodecta* (*vitellinae* Suffr., *laticollis* Suffr., *tibialis* subsp. *Cornelii*