

中国缘蛾蜡蝉属分类与二新纪录种 (半翅目, 蛾蜡蝉科)

彭凌飞 张雅林 王应伦*

西北农林科技大学植保资源与病虫害治理教育部重点实验室, 西北农林科技大学昆虫博物馆 陕西杨凌 712100

摘要 记述蛾蜡蝉科 Flatidae 缘蛾蜡蝉属 *Salurnis* Stål 中国 2 新纪录种: 海缘蛾蜡蝉 *S. hesita* Medler, 1992 和埃缘蛾蜡蝉 *S. estora* Medler, 1992, 提供了形态及雄性外生殖器特征图。制作了本属分布于中国的 5 个种的分种检索表。
关键词 半翅目, 蛾蜡蝉科, 缘蛾蜡蝉属, 新纪录, 中国。

中图分类号 Q969.35

缘蛾蜡蝉属 *Salurnis* 由 Stål 建立于 1870 年, 模式种是产于菲律宾的 *Salurnis granulosa*, Melichar 于 1902 年又将 *Ricania marginella* 移入该属, 自此之后, Distant (1906)、Kirkaldy (1913)、Jacobi (1915)、Lallemand (1939) 等分别记述了分布于缅甸, 中国澳门、台湾以及马来西亚等地的种类。在 Metcalf 于 1957 年出版的《蛾蜡蝉科名录》一书中, 缘蛾蜡蝉属 *Salurnis* 共记载 6 种和 1 变种: *S. granulosa*、*S. marginella*、*S. uniformis*、*S. kershawi*、*S. fimosana*、*S. dulitana* 和 *S. dulitana* var. *minuta*。Medler (1986, 1987, 1990, 1992) 检视了该属种类的模式标本及雄性外生殖器特征后, 将 *S. dulitana* var. *minuta* 提升到种级水平即 *S. minuta*, 并建立新组合 *S. bipunctata* (*Poeciloptera bipunctata* Walker), 分别指出 *Pulastya abbreviata* Distant 和 *S. uniformis* Distant 为 *S. bipunctata* 的异名; *Poeciloptera fimbriolata* Stål、*S. kershawi* Kirkaldy、*S. fimosana* Jacobi 是 *S. marginella* 的异名; 在此基础上, 记述了分布于老挝、泰国的 *S. hesita*、*S. dilina*、*S. estora* 等 3 新种, 至此该属全世界已知 10 种。本文记载中国分布的 5 种, 其中 *S. hesita* 和 *S. estora* 为中国新纪录种, 制作了中国缘蛾蜡蝉属分种检索表。

缘蛾蜡蝉属 *Salurnis* Stål, 1870

Salurnis Stål, 1870. *Oiv. Svenska Vet. Akad. Fögh.*, 27: 773

模式种: *Salurnis granulosa* Stål, 1870

该属种类体绿色或淡黄绿色。头包括复眼略窄于前胸背板, 顶光滑, 圆锥形, 无纵脊, 基部横脊被前胸背板前缘所遮盖, 仅可见到侧缘脊。额无中脊, 侧缘脊细, 隆起, 在触角上方向两侧扩张, 长略大于宽。前胸背板前缘近圆锥形突出, 稍伸过头

顶的基部, 中域有浅凹痕, 中脊弱或无, 眼后突明显隆起, 三角形。中胸背板具 3 条或 4 条长纵脊。前翅与后翅等宽, 端部扩大, 前缘弧形, 外缘近平截状, 顶角阔圆, 臀角呈尖角状突出; 前缘室明显比前缘膜宽, 脉纹网状, Sc+ R 和 M 脉基部共柄; Cu 脉分叉, Cu₁ 脉斜, 与 M₂ 脉合并, 或延伸到端缘, Cu₂ 脉达到爪片端部; 爪片具颗粒状突起, 爪脉在爪片端部不愈合, 爪缝处横脉梯形排列。最显著的特征是爪片后缝缘的小室黑色或黑褐色, 通常在爪片端部的黑斑大, 近马蹄形。沿前缘、外缘、缝缘脉纹间的斑点大小及颜色深浅等在种间有一定的差异。雄性外生殖器尾节侧面观近三角形, 肛节细长, 略向下弯曲, 阳茎细长, 抱器末端钩状上翘。后足胫节的刺式: I: 6, I: 7 或 I: 8。

分布: 东洋区。

缘蛾蜡蝉属分种检索表

- 1 中胸背板中脊明显, 其两侧分别有 1 侧脊 3
 - 中胸背板无中脊, 或中脊不明显, 两侧分别有 2 条侧脊 2
- 2 顶前缘钝角状, 约呈 120°, 后足刺式 I: 7-9
 - 褐缘蛾蜡蝉 *S. marginella* (Guerin M)
 - 顶前缘阔圆, 约呈 145°, 后足刺式 I: 8-11
 - 红带缘蛾蜡蝉 *S. lastendis* Medler
- 3 前、中胸色均一, 绿色或淡绿色 4
 - 前、中胸具一桔黄色宽纵带 海缘蛾蜡蝉 *S. hesita* Medler
- 4 顶前缘略突出 埃缘蛾蜡蝉 *S. estora* Medler
 - 顶前缘钝圆锥形 二斑缘蛾蜡蝉 *S. bipunctata* (Walker)

1 褐缘蛾蜡蝉 *Salurnis marginella* (Guerin Meneville) (图 1~4)

Ricania marginella Guerin Meneville, 1829. *Plates from Iconographie du Règne Animal*, Pl. 58, fig. 6.

Poeciloptera fimbriolata Stål, 1854. *Öfv. Svenska Vet. Akad. Fögh.*, 11: 247.

Salurnis kershawi Kirkaldy, 1913. *Bull. Hawaiian Sugar Planter's Assoc. Div.*

国家自然科学基金项目 (30870325) 和科技部科技基础工作专项 (2006FY1105003) 项目资助。

* 通讯作者, E-mail: yinglunw@nwsuaf.edu.cn

收稿日期: 2009-05-18, 修订日期: 2009-07-20.

Ent., 12: 21.

Salumis formamus Jacobi, 1915. *Deutsche Ent. Zeit.*, 1915: 171.

Salumis marginella Metcalf, 1957. *General Catalogue Homoptera, Part.* 13: 96.

后足刺式为: 1: 7: 9。

观察标本: 3 ♂♂, 2♀♀, 湖南郴州, 1985-07-29, 张雅林、柴勇辉采; 1 ♂, 2♀♀, 湖南郴州, 1985-08-04, 张雅林、柴勇辉采; 2♀♀, 湖南衡山, 1985-08-18, 张雅林、柴勇辉采; 1 ♂, 3♀♀, 海南陵水县, 1983-05-18, 张雅林采; 1 ♂, 1♀, 广东鼎湖山, 1985-05-18, 张雅林采; 1♀, 海南尖峰岭, 1983-05-18, 张雅林采; 1 ♂, 广东鼎湖山, 1985-05-19, 张雅林采; 1♀, 海南兴隆, 1962-05, 灯诱; 1♀, 海南宝岛新村, 1964-09; 1 ♂, 海南尖峰岭, 1983-06-14, 顾茂彬采; 1♀, 浙江杭州, 1978-08-08, 周尧采; 1 ♂, 1♀, 福建三明, 1981-06, 78级采; 1♀, 江西庐山, 1978-09-26; 1 ♂, 安徽劳动大学, 1974-08-12, 黄桔采; 1 ♂, 湖北武汉, 1958-07-6, 灯诱; 1 ♂, 河南鸡公山, 1990-08-17, 王应伦、王美楠采; 3♀♀, 广西桂林, 1974-08-28, 周尧、卢笋采; 1♀, 广西金宝公社, 1984-06-03, 吴正亮、陆晓林采; 1 ♂, 广西博白, 1985-06-07, 王缉健采; 1 ♂, 广西灵田公社, 1984-06-03, 吴正亮、陆晓林采。

分布: 中国 (安徽、福建、浙江、广东、广西、海南、河南、湖南、湖北、江西、四川、台湾); 澳大利亚, 马来西亚, 日本, 印度, 印度尼西亚, 越南。

2 红带缘蛾蜡蝉 *Salurnis lastendis* Medler (图 5~ 8)

Salurnis lastendis Medler, 1992. *Oriental Insects*, 26: 14, fig. 17.

后足刺式为: 1: 8: 11。

观察标本: 1 ♂, 湖北巴东城关, 1977-07-23, 刘胜利采; 5♀♀, 湖北巴东三峡林场, 80 m, 1994-09-17, 姚建采; 1 ♂, 四川巫山江东村, 110 m, 1994-10-04, 李法圣采。

分布: 该种仅分布于中国 (四川、湖北)。

3 二斑缘蛾蜡蝉 *Salumis bipunctata* (Walker) (图 9~ 12)

Poasihptera bipunctata Walker, 1862. *Jour. Ent.*, 1: 312.

Salurnis uniformis Distant, 1906. *Fauna of British India*. 3: 419.

Pulastya abbreviate Distant, 1914. *Ann. Mag. Nat. Hist.*, 8 (13): 419.

Phyllyphantu bipunctata Metcalf, 1957. *General Catalogue Homoptera, Part* 13: 184.

Salurnis bipunctata, Medler, 1992. *Oriental Insects*, 26: 11.

后足刺式为: 1: 8: 11。

观察标本: 18 ♂♂, 16♀♀, 广东深圳, 1986-07, 张雅林采; 1♀, 湖南衡山, 1985-08-7, 张雅林、柴勇辉采; 3 ♂♂, 4♀♀, 湖南衡山, 1985-07-10, 张雅林、柴勇辉采; 3 ♂♂, 17♀♀, 湖南郴州, 1985-06-26, 张雅林、柴勇辉采; 1♀, 广西博白, 1980-10-09, 李永泉采; 1 ♂, 云南勐腊瑶区, 1991-05-08, 王应伦、彩万志采; 2 ♂♂, 海南保亭县, 1984-04-13, 刘胜利采; 1♀, 海南保亭县, 1984-04-15, 刘胜利采; 1 ♂, 1♀, 海南尖峰岭, 1984-12-15, 平正明采; 1♀, 海南尖峰岭, 1988-05-18, 张雅林采; 1♀, 海南兴隆, 1983-04-26, 张雅林采; 1♀, 海南陵水县, 1983-05-04, 张雅林采; 1♀, 广东连县, 1962-07-20, 郑乐怡、程汉华采; 1♀, 广东广州, 1963-04-13, 周尧采; 1♀, 云南景洪热带植物所, 1982-04-10, 王素梅、周

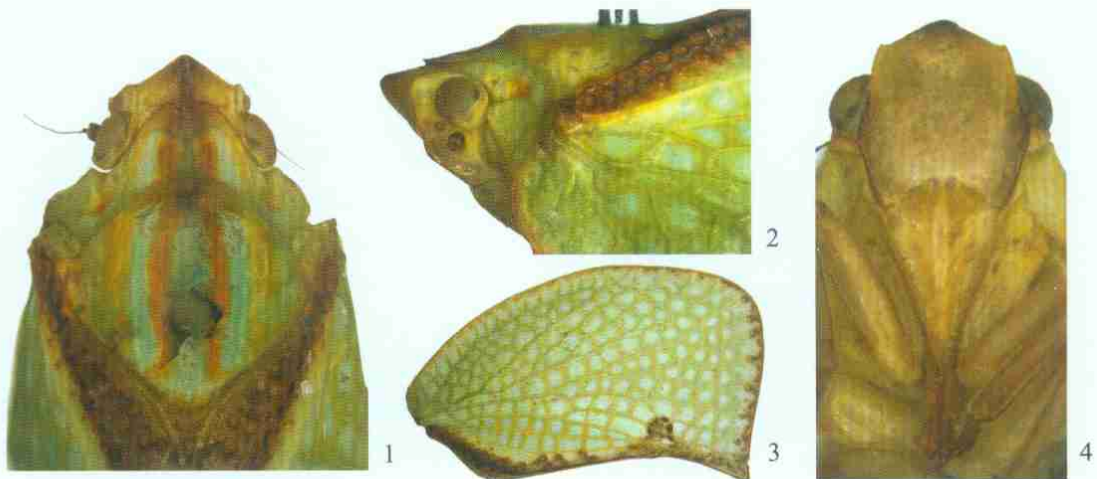


图 1~ 4 褐缘蛾蜡蝉 *Salurnis marginella* (Guerin Meneville)

1. 头、胸部背面观 (head and thorax, dorsal view) 2. 头、胸部侧面观 (head and thorax, lateral view) 3. 前翅 (tegmen) 4. 颜 (face)

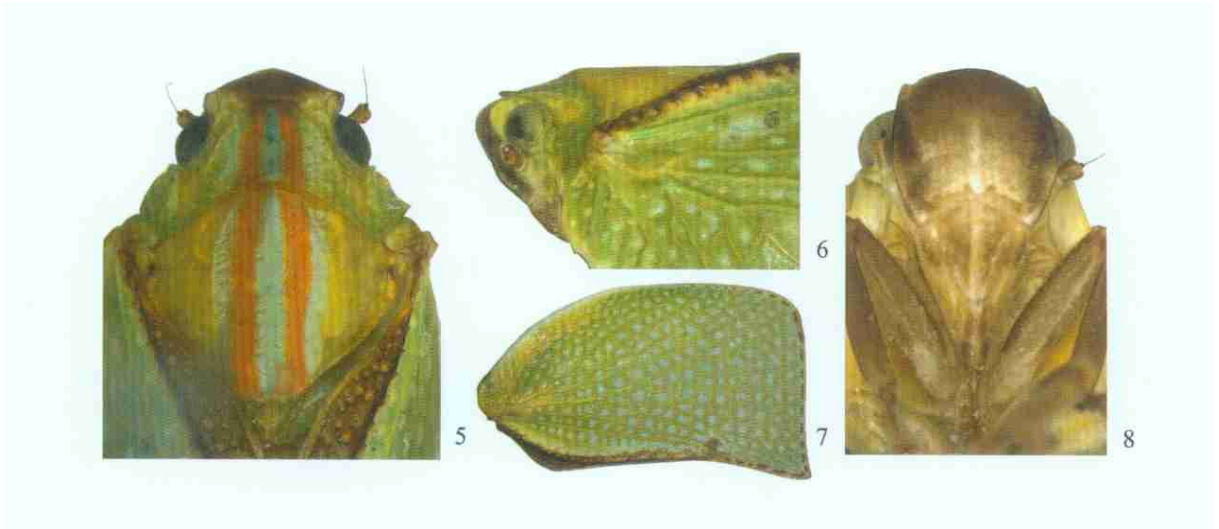


图 5~ 8 红带缘蛾蜡蝉 *Salurnis lastendis* Medler

5. 头、胸部背面观 (head and thorax, dorsal view) 6. 头、胸部侧面观 (head and thorax, lateral view) 7. 前翅 (tegmen) 8. 颜 (face)

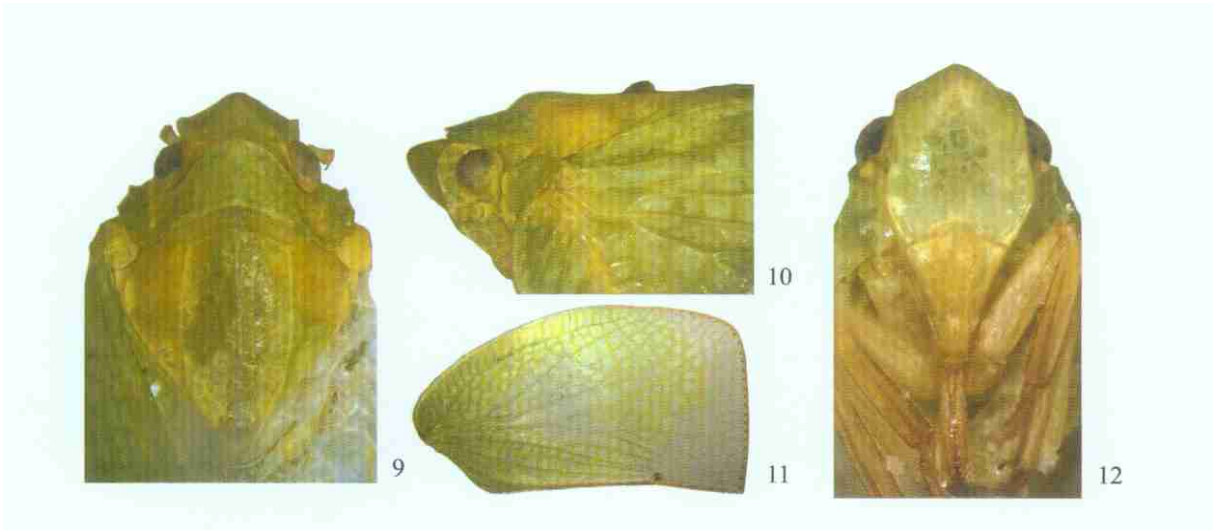


图 9~ 12 二斑缘蛾蜡蝉 *Salurnis bipundata* (Walker)

9. 头、胸部背面观 (head and thorax, dorsal view) 10. 头、胸部侧面观 (head and thorax, lateral view) 11. 前翅 (tegmen) 12. 颜 (face)

静若采。

分布: 中国 (广东、广西、海南、贵州、云南、湖南、陕西、香港); 缅甸, 越南。

4 海缘蛾蜡蝉 *Salurnis hesita* Medler 中国新纪录 (图 13~ 16, 21)

Salurnis hesita Medler, 1992, *Oriental Insects*, 26: 10, fig 12.

体长: ♂ 10.9 mm, ♀ 11.3 mm。

体翅淡绿色, 翅边缘呈橘红色, 头和前、中胸背板中线呈黄褐色纵带。头顶前缘呈钝角突出, 角度约为 110° ; 额平, 长宽几乎相等, 淡黄褐色, 布满网状花纹, 在触角前方向外扩张, 侧缘稍脊起, 基部与唇基交界处弧形凹入; 触角短, 柄节圆柱形,

梗节略膨大, 淡黄色, 近椭圆形, 鞭节基部褐色。复眼圆, 黑褐色; 单眼乳白色。

前胸背板前缘突出, 超过头顶的后缘横脊, 具 1 中纵脊, 具稀疏的淡黄褐色瘤状突起, 眼后突呈直角脊状。中胸背板具 3 条明显纵脊, 此外在 3 条纵脊基部的两侧分别有 1 较短的侧脊。前翅前缘略弧状, 外缘平直, 后缘稍弧形凹入, 臀角外突呈锐角, 约 70° ; 前缘室 1.5 倍于前缘膜, Cu 脉分叉在 M 脉分叉之前。

雄虫肛节长, 略向下弧状弯曲。尾节侧面观略呈三角形, 背缘极短, 基缘中部凹入, 端缘弧状。抱器大, 三角形, 背缘有小刺毛, 末端钩状上翘。

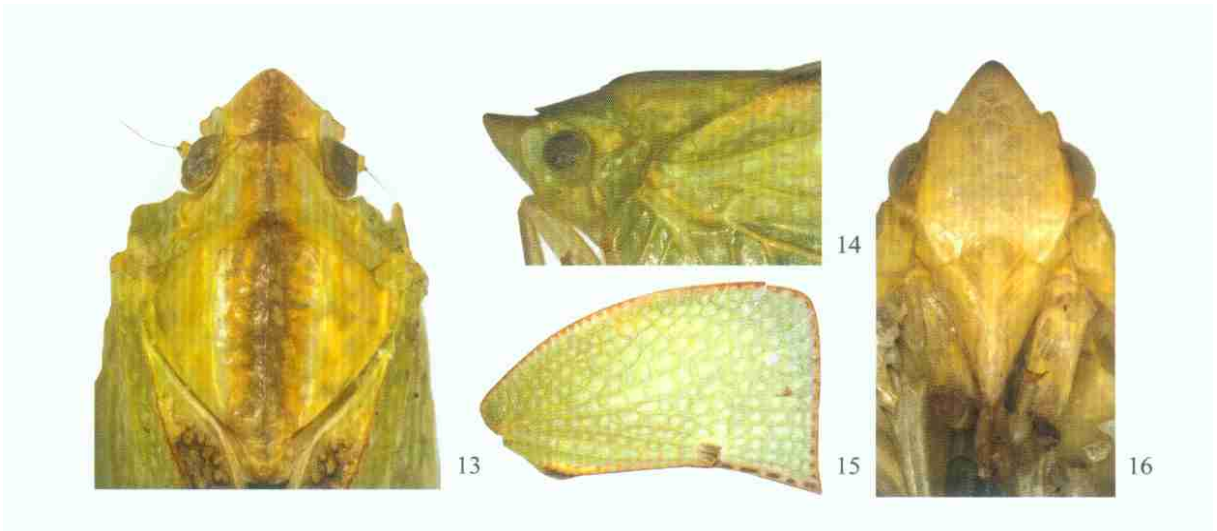


图 13~ 16 海缘蛾蜡蝉 *Salurnis hesita* Medler

13. 头、胸部背面观 (head and thorax, dorsal view) 14. 头、胸部侧面观 (head and thorax, lateral view) 15. 前翅 (tegmen) 16. 颜 (face)

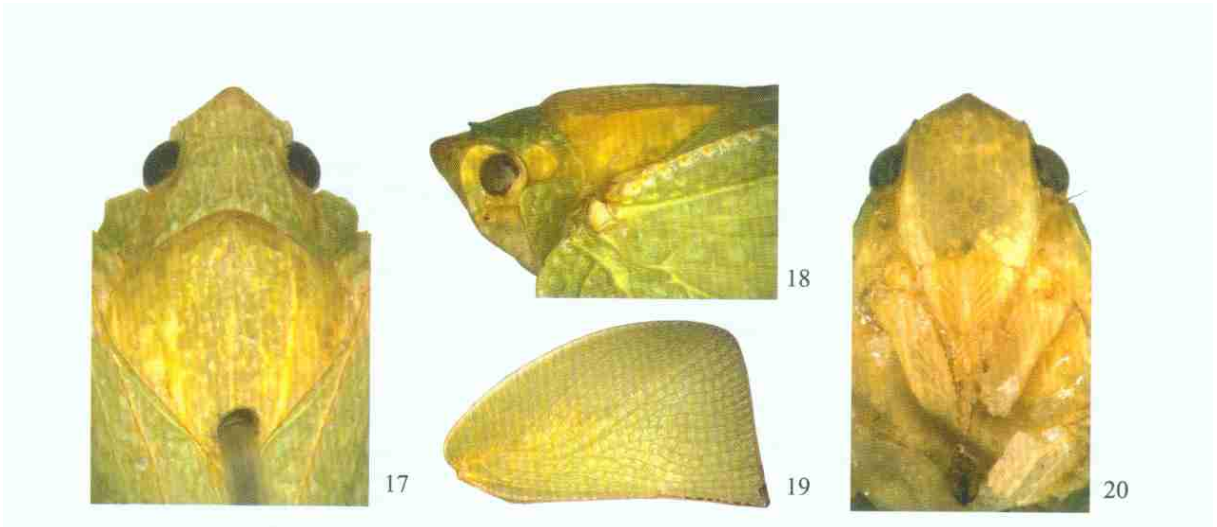


图 17~ 20 埃缘蛾蜡蝉 *Salurnis estora* Medler

17. 头、胸部背面观 (head and thorax, dorsal view) 18. 头、胸部侧面观 (head and thorax, lateral view) 19. 前翅 (tegmen) 20. 颜 (face)

阳茎细长, 阳茎基管状包裹大部分阳茎, 阳茎基末端着生 1 对端刺, 先向上再向头部弯折; 阳茎鞘被阳茎基包裹, 仅露出端部和 1 对阳茎鞘端刺, 并且此 1 对刺包裹在阳茎基端刺的外部两侧, 阳茎鞘端刺宽, 指向头部方向并伸达阳茎基部, 基部呈卵圆形, 刺的背腹面有锯齿状小刺突, 背面观刺的中部向外侧弧状弯曲。

后足刺式为: 1: 8: 11/12。

观察标本: 1♀, 云南勐仑, 1974-04-21/30, 周尧、袁锋、胡隐月采; 1♀, 云南瑞丽, 1981-10-25, 沈发采; 1♀, 云南勐腊, 1982-04-20, 沈发采; 1♂, 1♀, 云南勐腊瑶区, 1991-05-05, 王应伦、彩万志采; 1♀, 云南勐腊瑶区, 1991-05-08, 王应伦、彩

万志采; 1♀, 云南打洛, 1991-05-31, 王应伦、彩万志采。

分布: 中国 (云南); 泰国, 越南。

5 埃缘蛾蜡蝉 *Salurnis estora* Medler 中国新纪录 (图 17~ 20, 22)

Salurnis estora Medler, 1992. *Oriental Insects*, 26: 12, fig. 14.

体长: ♂14.5 mm, ♀ 15.5 mm。

体翅淡绿色, 前翅边缘具较大的黑色斑点。头顶前缘呈钝角, 角度约为 115° ; 额平, 淡绿色, 基部与唇基交界处弧形凹入, 边缘波状, 侧缘脊起; 唇基淡黄褐色, 隆起, 中脊扁平, 为 1 淡黄色宽带, 两侧具“人”字形纹; 喙黄褐色, 端节赭色, 较短

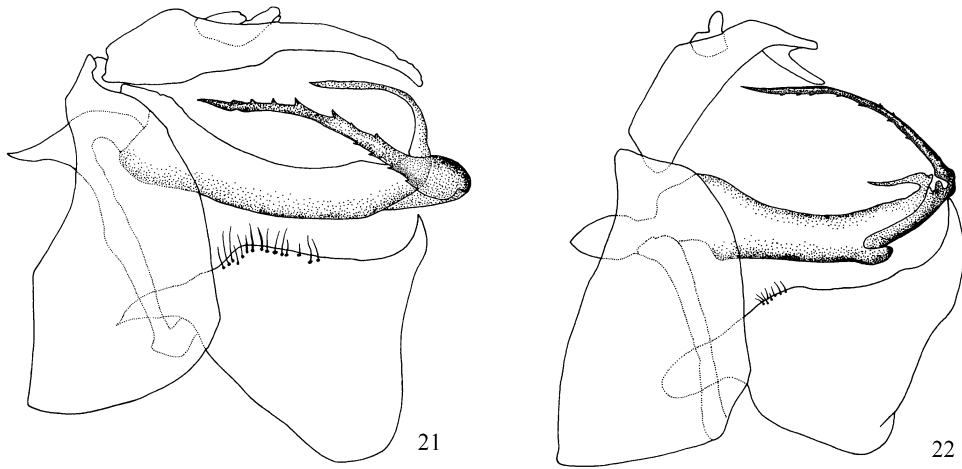


图 21~ 22 雄性外生殖器侧面观 (male genitalia, lateral view)

21. 海缘蛾蜡蝉 *Saburnis hesita* Maller 22. 埃缘蛾蜡蝉 *Saburnis extra* Medler

粗壮，其末端膨大，未伸达中足基节处；触角短，黄褐色，梗节膨大，近椭圆形，鞭节基部黑褐色；复眼圆形，黑褐色，基部黄褐色；单眼小，乳黄色。

前胸背板前缘波状，具 3 条纵脊，中脊明显隆起；眼后突脊状。中胸背板中脊明显，2 侧脊仅在前半部 1/2 处明显。前翅前缘近弧状，外缘近平直，后缘斜略；前缘室 1.5 倍于前缘膜，Cu 脉分叉位于 M 脉分叉之后；顶角圆，臀角尖锐，明显向后突出，角 75°。

雄虫肛节短，近平直，端部向下弯折，端部腹面具一向后下方伸出的长突。尾节侧面观略呈梯形，背缘较短，基缘略呈“S”形，端缘弧状。抱器大，长三角形，背缘有小刺毛，末端钩状上弯。阳茎细长，阳茎基管状，包裹 2/3 阳茎鞘，阳茎基腹瓣短，侧瓣长，伸达阳茎末端，侧瓣上着生 1 对细小端刺，伸向头部方向，端部略上翘；阳茎鞘被阳茎基包裹，端部着生 1 对长刺；刺向上弯曲伸向头部方向，基部有 1 指状小突起和 1 缢缩的凹窝，刺体腹面有多个锯齿状小刺。

后足刺式为：1: 8: 10/12。

观察标本：1 ♂，云南临沧；1 ♀，云南勐养三岔河，1100 m，1979-04-22，胡家域采；1 ♀，云南勐养三岔河，1000 m，1982-05-10；1 ♀，云南勐仑，1984-05-10；1 ♀，海南那大，1974-08-23/24，周尧、卢笋采。

分布：中国（云南，海南）；越南。

REFERENCES (参考文献)

Chou, I., Lu, J.S., Huang, J. and Wang, S.Z. 1985. Economic Insect Fauna of China. Fasc. 36. Homoptera Fulgoroidea. Science Press, Beijing. 1-152.
Distant, W. L. 1906. The Fauna of British India Including Ceylon and Burma. Rhynchotha. *Heteroptera Homoptera*. Taylor & Francis, London,

3: 408-409.
Fang, S.J. 1989. Flatidae of Taiwan (Homoptera: Fulgoroidea). In: Collected Papers on Fulgoroidea of Taiwan. *Taiwan Mus. Spec. Publ.*, Ser., 8: 117-152.
Jacobi, A. 1915. Kritische Bemerkungen über die Flatinae (Rhynchotha Homoptera). *Deutsche Ent. Zeit.*, 1915: 157-178.
Kirkaldy, G. W. 1913. On some new species of leafhoppers. Part 1. *Bull. Hawaii. Sugar Planter's Assoc. Div. Ent.*, 12: 7-27.
Lallemand, V. 1939. III Faune de Sarawak. Homopteres Recueillis par l'Expedition Universitaire d'Oxford en 1932 et par Mr. Shelford Autor de Kuching en 1900. *Ann. Mag. Nat. Hist.*, (11) 4: 57-78.
Medler, J. T. 1986. Types of Flatidae (Homoptera) in the Stockholm Museum described by Stål, Melichar, Jacobi and Walker. *Ent. Scand.*, 17: 323-337.
Medler, J. T. 1990. Types of Flatidae (Homoptera) XIV. Walker and Distant Types in the British Museum. *Oriental Insects*, 24: 127-195.
Medler, J. T. 1991. Flatidae of Sulawesi, with Notes on some Related Philippine and Indomalayan Species (Homoptera: Fulgoroidea). *Oriental Insects*, 25: 1-43.
Medler, J. T. 1992. Revision of the Tribe Phyllyphantini in the Oriental Region, with Descriptions of New Genera and New Species (Homoptera: Flatidae). *Oriental Insects*, 26: 1-38.
Medler, J. T. 1999. Flatidae (Homoptera: Fulgoroidea) of Indonesia, exclusive of Irian Jaya. *Zoologische Verhandlungen*, 324: 1-88.
Medler, J. T. 2003. Types of Flatidae XXIV. Type designation and taxonomic notes on species in the Nature History Museum of Geneva. *Revue Suisse de Zoologie*, 110 (3): 591-597.
Medler, J. T. 2006. A review of the Sri Lankan Flatidae (Homoptera: Fulgoroidea). *Oriental Insects*, 40: 231-265.
Melichar, L. 1902. Monographie der Acanaloniiden und Flatiden (Homoptera). *Ann. K. K. Nat. Hofmus. Wien.*, 17: 1-123.
Metcalf, Z. P. 1957. General Catalogue of the Homoptera. Fulgoroidea. Part 13. Flatidae and Hypochthonellidae. North Carolina: North Carolina State College, Raleigh, N. C., U. S. A.
Walker, F. 1851. List of the Specimens of Homoptera Insects in the Collection of the British Museum. 2: 261-636.
Walker, F. 1857. Catalogue of the Homopterous Insects Collected at Singapore and Malacca by Mr. A. R. Wallace, with descriptions of New Species. *J. Proc. Linn. Soc. London*, 1: 82-100.
Walker, F. 1858. List of the Specimens of Homopterous Insects in the Collection of British Museum. Supplement. 1-307.
Wang, Y.L. and Peng, L.F. 2007. A taxonomic study on the genus *Corynia* Stål from China (Hemiptera, Flatidae). *Acta Zootaxonomica Sinica*, 32 (4): 933-936. [动物分类学报]
Wang, Y.L., Peng, L.F. and Liu, H.W. 2008. A taxonomic study on the genus *Dfrunda* Distant from China (Hemiptera, Achilidae). *Acta Zootaxonomica Sinica*, 33 (4): 775-779. [动物分类学报]

A TAXONOMIC STUDY ON THE GENUS *SALURNIS* STÅL FROM CHINA (HEMIPTERA, FLATIDAE), WITH DESCRIPTION OF TWO NEW RECORD SPECIES

PENG Ling Fei, ZHANG Ya Lin, WANG Ying Lun*

Key Laboratory of Plant Protection Resource and Pest Management, Ministry of Education, Entomological Museum, Northwest A & F University, Yangling, Shaanxi 712100, China

Abstract This paper deals with five species of the genus *Salurnis* Stål from China, of which two are new record, *Salurnis hesita* Medler and *Salurnis estora* Medler. A key to species of the genus is provided. All the specimens are kept in the Entomological Museum of the Northwest A & F University.

1 *Salurnis marginella* (Guerin Meneville) (Figs. 1-4)

Ricania marginella Guerin Meneville, 1829.

Plates from Iconographie du Règne Animal, Pl. 58, fig. 6.

Poeciloptera fimbriolata Stål, 1854. *Öv. Svenska Vet. Akad. Föhr.*, 11: 247.

Salurnis kershawi Kirkaldy, 1913. *Bull. Hawaiian Sugar Planter's Assoc. Div. Ent.*, 12: 21.

Salurnis formosus Jacobi, 1915. *Deutsche Ent. Zeit.*, 1915: 171.

Salurnis marginella Metcalf, 1957. *General Catalogue Homoptera*, Pat. 13: 96.

Specimens examined. 3 ♂♂, 2 ♀♀, Chenzhou, Hunan Province, 29 July 1985, coll. ZHANG Ya Lin and CHAI Yong Hui; 1 ♂, 2 ♀♀, Chenzhou, Hunan Province, 4 Aug. 1985, coll. ZHANG Ya Lin and CHAI Yong Hui; 2 ♀♀, Hengshan, Hunan Province, 18 Aug. 1985, coll. ZHANG Ya Lin and CHAI Yong Hui; 1 ♂, 3 ♀♀, Lingshui County, Hainan Province, 18 May 1983, coll. ZHANG Ya Lin; 1 ♂, 1 ♀, Dinghushan, Guangdong Province, 18 May 1985, coll. ZHANG Ya Lin; 1 ♀, Jianfengling, Hainan Province, 18 May 1983, coll. ZHANG Ya Lin; 1 ♂, Dinghushan, Guangdong Province, 19 May 1985, coll. ZHANG Ya Lin; 1 ♀, Xinglong, Hainan Province, May 1962; 1 ♀, Baodao Village, Hainan Province, Sep. 1964; 1 ♂, Jianfengling, Hainan Province, 14 June 1983, coll. GU Mao Chen; 1 ♀, Hangzhou, Zhejiang Province, 8 Aug. 1978, coll. CHOU Io; 1 ♂, 1 ♀, Samming, Fujian Province, June 1981, coll. class 1978; 1 ♀, Lushan, Jiangxi Province, 26 Apr. 1978; 1 ♂, Labor University, Anhui Province, 12 Aug. 1974, coll. HUANG Ju; 1 ♂, Wuhan, Hubei Province, 6 July 1958; 1 ♂, Jigongshan, Henan Province, 17 Aug. 1990, coll. WANG Ying Lun and WANG Mei Nan; 3 ♀♀, Guilin, Guangxi Province, 28 Aug. 1974, coll. CHOU Io and LU Zheng; 1 ♀, Jinbao Commune, Guangxi Province, 3 June 1984, coll. WU Zheng Ling and LU Xiao Lin; 1 ♂, Bobai Guangxi Province, 7 June 1985, coll. WANG Yi Jian; 1 ♂, Lingtian commune, Guangxi Province, 3 June 1984, coll. WU Zheng Ling and LU Xiao Lin.

2 *Salurnis lastendis* Medler (Figs. 5-8)

Salurnis lastendis Medler, 1992. *Oriental Insects*, 26: 14, fig. 17.

Specimens examined. 1 ♂, Badong, Hubei Province, 23 July 1977, coll. LIU Sheng Li; 5 ♀♀, Sanxia Forestry Centre, Badong, Hubei Province, alt. 80 m, 17 Apr. 1994, coll. YAO Jian; 1 ♂, Jianguing Village, Wushan, Sichuan Province, alt. 110 m, 4 May 1994, coll. LI Fa Sheng.

3 *Salurnis bipunctata* (Walker) (Figs. 9-12)

Poeciloptera bipunctata Walker, 1862. *Jour. Ent.*, 1: 312.

Salurnis unifornis Distant, 1906. *Fauna of British India*. 3: 419.

Rulastya abbreviate Distant, 1914. *Ann. Mag. Nat. Hist.*, 8 (13): 419.

Phyllyphantia bipunctata Metcalf, 1957. *General Catalogue Homoptera*, Pat 13: 184

Salurnis bipunctata, Medler, 1992. *Oriental Insects*, 26: 11.

Specimens examined. 18 ♂♂, 16 ♀♀, Shenzhen, Guangdong Province, July 1986, coll. ZHANG Ya Lin; 1 ♀, Hengshan, Hunan Province, 7 Aug. 1985, coll. ZHANG Ya Lin and CHAI Yong Hui; 3 ♂♂, 4 ♀♀, Hengshan, Hunan Province, 10 July 1985, coll. ZHANG Ya Lin and CHAI Yong Hui; 3 ♂♂, 17 ♀♀, Chenzhou, Hunan Province, 26 June 1985, coll. ZHANG Ya Lin and CHAI Yong Hui; 1 ♀, Bobai, Guangxi Province, 9 Oct. 1980, coll. LI Yong Quan; 1 ♂, Mengla County, Yunnan Province, 8 May 1991, coll. WANG Ying Lun and CAI Wan Zhi; 2 ♂♂, Baoting County, Hainan Province, 13 Apr. 1984, coll. LIU Sheng Li; 1 ♀, Baoting County, Hainan Province, 15 Apr. 1984, coll. LIU Sheng Li; 1 ♂, 1 ♀, Janfengling, Hainan Province, 15 July 1984, coll. PING Zheng Ming; 1 ♀, Janfengling, Hainan Province, 18 May 1988, coll. ZHANG Ya Lin; 1 ♀, Xinglong, Hainan Province, 26 Apr. 1983, coll. ZHANG Ya Lin; 1 ♀, Lingshui, Hainan Province, 4 May 1983, coll. ZHANG Ya Lin; 1 ♀, Lian County, Guangdong Province, 20 July 1962, coll. ZHENG Le Yi and CHENG Han Hua; 1 ♀, Guangzhou, Guangdong Province, 13 Apr. 1963, coll. CHOU Io; 1 ♀, Jinghong Tropic Botanical Garden, Yunnan Province, 10 Apr. 1982, coll. WANG Su Mei and CHOU Jing Ruo.

4 *Salurnis hesita* Medler, New record to China (Figs. 13-16, 21)

Salurnis hesita Medler, 1992. *Oriental Insects*, 26: 10, fig. 12.

Specimens examined. 1 ♀, Menglun, Yunnan Province, 21/30 Apr. 1974, coll. CHOU Io, YUAN Feng and HUN Yin Yue; 1 ♀, Ruili, Yunnan Province, 25 Oct. 1981, coll. SHEN Fa; 1 ♂, 1 ♀, Mengla County, Yunnan Province, 5 May 1991, coll. WANG

* Corresponding author.

Ying Lun and CAI Wang Zhi; 1 ♀, Mengla, Yunnan Province, 8 May 1991, coll. WANG Ying Lun and CAI Wang Zhi; 1 ♀, Daluo, Yunnan Province, 31 May 1991, coll. WANG Ying Lun and CAI Wang Zhi.

5 *Salurnis estora* Medler, **New record to China** (Figs. 17-20, 22)

Salurnis estora Medler, 1992, *Oriental Insects*, 26: 12, fig. 14.

Key words Hemiptera, Flatidae, *Salurnis*, new record, China.

Specimens examined. 1 ♂, Lincang, Yunnan Province; 1 ♀, Sanchahe, Mengyang, Yunnan Province, alt. 1 100m, 22 Apr. 1979, coll. HU Jia Yu; 1 ♀, Menglun, Yunnan Province, 10 May 1984; 1 ♀, Nada, Hainan Province, 23/24 Aug. 1974, coll. CHOU Io and LU Zheng.