

NEW LEAFHOPPERS FROM PUERTO RICO
(CICADELLIDAE: HOMOPTERA)

JOHN S. CALDWELL¹ AND LUIS F. MARTORELL²

Dikraneura althaeae n. sp.

Length, 2.6 mm.—3 mm. Specimens in preserving fluid; appearing yellow over all with first and last apical cells of fore wing slightly fumate.

Vertex rather obtuse, blunt. Forewing with second apical cell triangular but not stalked. Style furcate apically; inner apex extended more than outer. Pygofer rather extended dorsoposteriorly on either lateral margin; process small, curved dorsally. Aedeagus with elongate, slender posterior process forked apically; anterior portion somewhat "S"-shaped in lateral aspect. (Fig. 1, A, B.)

Male holotype, female allotype, and paratypes from "varilla de San José," *Althaea rosea*, Río Piedras, March 8, 1951, causing heavy chlorosis on leaves and breeding abundantly. (Martorell)

Protalebra alliodorae n. sp.

Length, male 2.75 mm. female usually slightly longer. Specimens in preserving fluid; appearing yellow with a large, jet-black spot on either forewing at the inner basal angle and posteriorly on the scutellum. A broad smoky band present subapically on the forewings.

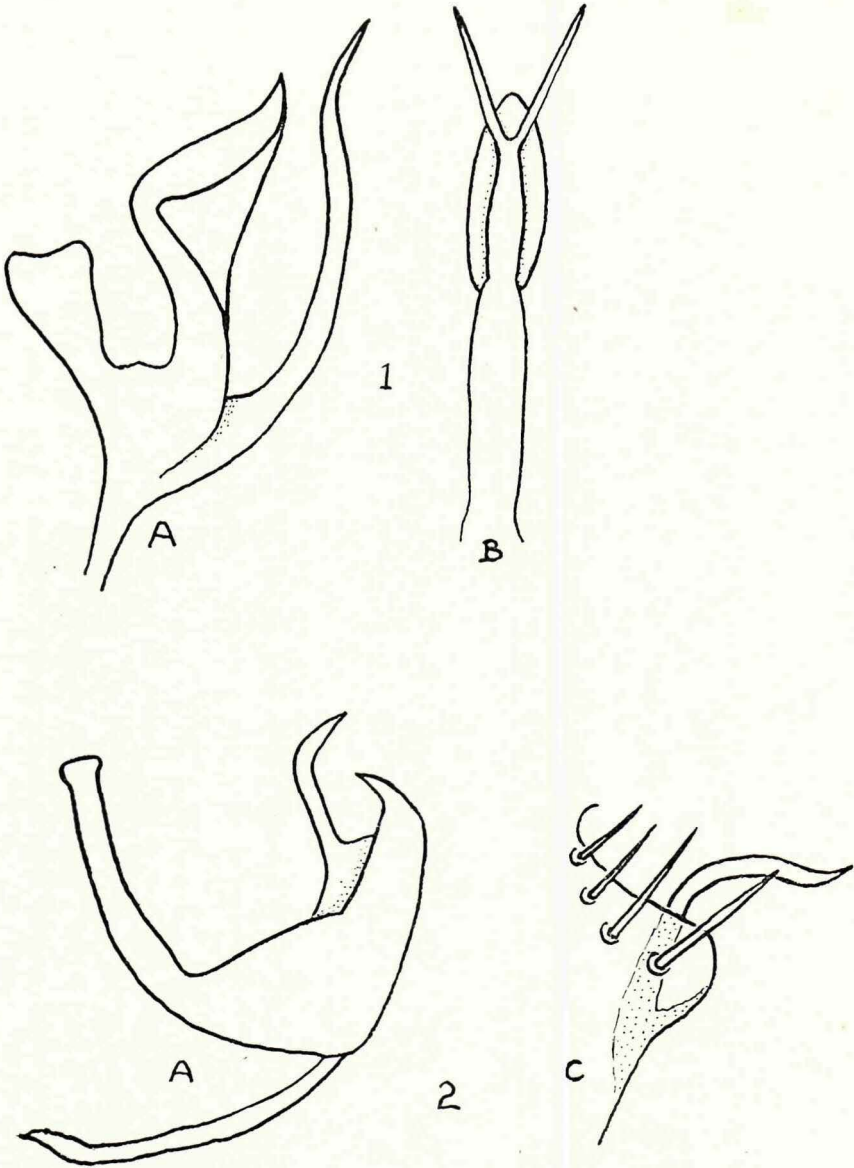
Vertex rather acute, almost as broad as pronotum. Pronotum slightly less than twice length of vertex.

Plates elongate, slender, acute apically. Pygofer with slender, posterior projecting process on either dorsoposterior margin. Aedeagus with long, slender base; terminal portion somewhat crescent-shaped with a process arising from the inner apical margin and projecting caudad. (Fig. 2, A, C.)

Male holotype, female allotype, and paratypes from "capa prieto," *Cordia alliodora*, Río Piedras, June 28, 1951; paratypes same data June 29, 1951. (Julio Bird)

¹ John S. Caldwell, Entomologist, Circleville, Ohio.

² Luis F. Martorell, Entomologist, Agricultural Experiment Station, Río Piedras, Puerto Rico.



EXPLANATION OF FIGURES

FIGS. 1 and 2: A, Left lateral aspect of aedeagus. B, Posterior aspect of aedeagus. C, Left lateral aspect of pygofer.