

Juhan VILBASTE

PRELIMINARY LIST OF HOMOPTERA — CICADINEA OF LATVIA AND LITHUANIA

The present list is mainly based on the materials collected by the author and his colleagues — entomologists of the Institute of Zoology and Botany of the Academy of Sciences of the Estonian SSR — on short journeys (lasting for 10—14 days) to the Latvian and the Lithuanian SSR, undertaken in the years 1965—1969. The material comprises more than 54,000 specimens (32,000 from Latvia and 22,000 from Lithuania).

All available faunistic literature in these areas has also been evaluated and catalogued. The fauna of so-called Livonia (formerly the northern part of Latvia and the southern part of Estonia) was treated as early as 1791 by Fischer and later by Flor (1861), that of so-called Curonia (the western part of Latvia) was discussed by Gimmerthal (1846). Nevertheless, the lists of Fischer and Gimmerthal contain several species which hardly can occur in the area mentioned above. Since their collections (so far as known to the author) have not been preserved, one cannot decide if those specimens were really found there, or if their records are based on misidentifications. Since the collection of G. Flor has been preserved and is deposited at the Institute of Zoology and Botany of the Academy of Sciences of the Estonian SSR, it was revised by the present author and published separately (Вильбасте, 1960; Vilbaste, 1973*).

In the last decades several publications on the Cicadinea fauna of the Latvian SSR have been published by Danka (1959—1969) and Velce (1964—1966). In 1970 they published together a "Katalog der Zikaden (*Auchenorrhyncha*) der Lettischen S.S.R." in which 231 species are noted on the basis of both the data available in the literature and personal finds (Велце, Данка, 1970). After a careful analysis of all data, sixteen of those species should be omitted from the list.** On the other hand two species recorded by Flor are not included in the above list: *Delphax leptosoma* (which is incorrectly synonymized with *Florodelphax paryphasma*) and *Typhlocyba rosea* (= *Flammigeroidia roseipennis*).

* **Correction:** In my previous paper (Vilbaste, 1973) serious mistakes have taken place in the Figures 2 and 3, which are confused: the figures on page 27 are those of *E. stachydearum* and the figures on page 26 belong to *E. collina*. In addition, the figures noted as E are confused in both tables and should replace each other.

** Six species, due to probable misidentifications of Gimmerthal (*Cixius stigmaticus*, *Asiraca clavicornis*, *Tettigometra virescens*, *Gargara genistae*, *Idiocerus fulgidus*, *I. vitreus*, *Penthimia nigra*, *Hardya tenuis*). Five species were not correctly named by Flor (cf. Vilbaste, 1973): *Macropsis scutellata* (= *M. fuscula*), *Idiocerus varius* (= *I. stigmaticus*), *Euscelis plebejus* (= *E. distinguendus*), *Allygidius atomarius* (= *A. commutatus*), *Psammotettix striatus* (= *P. confinis*), and *Jassus pauperculus* (which is not *Euscelis obsoletus* but probably *Allygus mixtus*). Two species were incorrectly determined (checked up by the author of this paper): *Psammotettix ornaticeps* (= *P. poecilus*) and *Ps. frigidus* (= *Ps. pallidinervis*).

On the Cicadinea fauna of Lithuania, as far as known to the present author, only some remarks on noxious species have been published hitherto.

The present list is also arranged in the form of a catalogue. Thereby the distribution of each species in the table is given in the geobotanical regions of the East-Baltic area (Covaba et al., 1960) (Fig. 1). The finds of the present author as well as those of other authors (e. g. Flor) which were checked up by him have been indicated with black dots. White dots denote the finds of other authors which have not been checked up. The distribution of the recorded species in the neighbouring countries — the Estonian SSR (E.), Finland (F.), Sweden (S.), Poland (P.) and the German Democratic Republic (G.) — has been given for comparison.

From the list those species have been omitted which were noted above (see footnote on page 131), and also *Eupteryx ornata* (Lt.) and *Fieberiella septentrionalis* Wg. whose ranges lie considerably southwards and whose occurrence in the area is somewhat doubtful.

All together 357 species were established, 320 species in Latvia and 296 in Lithuania.

The fauna of those two republics is indubitably richer than indicated here. The collecting routes of the author (see map in Fig. 1) included only a small part of the territory, and in most localities collecting was effected only once, i. e. during one faunistic aspect.

If we compare this list with that of the neighbouring countries, there exist many species not found in this area. For instance, in Estonia (the fauna of which is inadequately known) there occur: *Delphacodes capnodes*, *Stromoides maculiceps*, *Calligypona reyi*, *Javesella simillima*, *Cixidia confinis*, *Neophilaenus albipennis*, *Anacertagallia estonica*, *Sahlbergotettix salicicola*, *Eurhadina untica*, *Edwardsiana spinigera*, *Mongolojassus bicuspidatus*, *Adarrus bellevoeyi*, *Amplicephalus nebulosus*, *Cicadula intermedia*, *Palus edwardsi*, *Macrosteles fieberi* etc. In Finland are found following additional species: *Achorotile albosignata*, *A. longicornis*, *Paraliburnia clypealis*, *Struebingianella litoralis*, *Cicadetta montana*, *Oncopsis planiscuta*, *Idiocerus herrichi*, *Arboridia pullula*, *Kyboasca bipunctata*, *Edwardsiana australis*, *E. sociabilis*, *E. frustrator*, *E. lanternae*, *E. sordidula*, *Eurhadina ribauli*, *Micantulina micantula*, *Dikraneura aridella*, *Colobolettix morbillosus*, *Paralimnus rotundiceps*, *Ebarrius cognatus*, *Boreotettix serricauda*, *Ederranus discolor*, *E. luteus*, *Macrosteles fasciifrons*, *Sonronius anderi* and some northern species.

In Sweden there occur some more species which have not been indicated before: *Kelisia fasciata*, *Ditropis pteridis*, *Tyrphodelphax haglundii*, *Eurysa lineata*, *Helicoptera lapponica*, *Issus coleoptratus*, *Aphrophora corticea*, *Ledra aurita*, *Macropsis scutellata*, *Agallia consobrina*, *Arboridia distinguenda*, *Eurhadina loewi*, *Eupteryx thoulessi*, *Ossiannilssonola callosa*, *Edwardsiana nigriloba*, *E. crataegi*, *E. candidula*, *E. kemneri*, *Ribautiana tenerrima*, *Platymetopius major*, *P. guttatus*, *Rhytistylus proceps*, *Euscelis lineolatus*, *Mocydiopsis attenuata*, *Deltocephalus maculiceps*.

Many of the listed species doubtlessly occur in the Baltic Republics, as well.

The distribution table is followed by a detailed list of the species established during this investigation. If there are less than 5—6 localities, detailed data are given. If they are more numerous, only a short ecological characterization is given, as well as the number of the localities in which the species was found, the number of the collected specimens and the interval of time during which the species was collected.

The collectors are indicated as follows: A. V. — A. Vilbaste, E. R. — R. Remm, K. E. — K. Elberg.

Fam. *Tettigometridae*

Tettigometra atrata Fb., 1872. La. only old records of Flor (cf. Vilbaste, 1958).

Li: Nemenčine, dry meadow on sandy soil, on trees, 14. VIII 1968, 1 ♀ (A. V.).

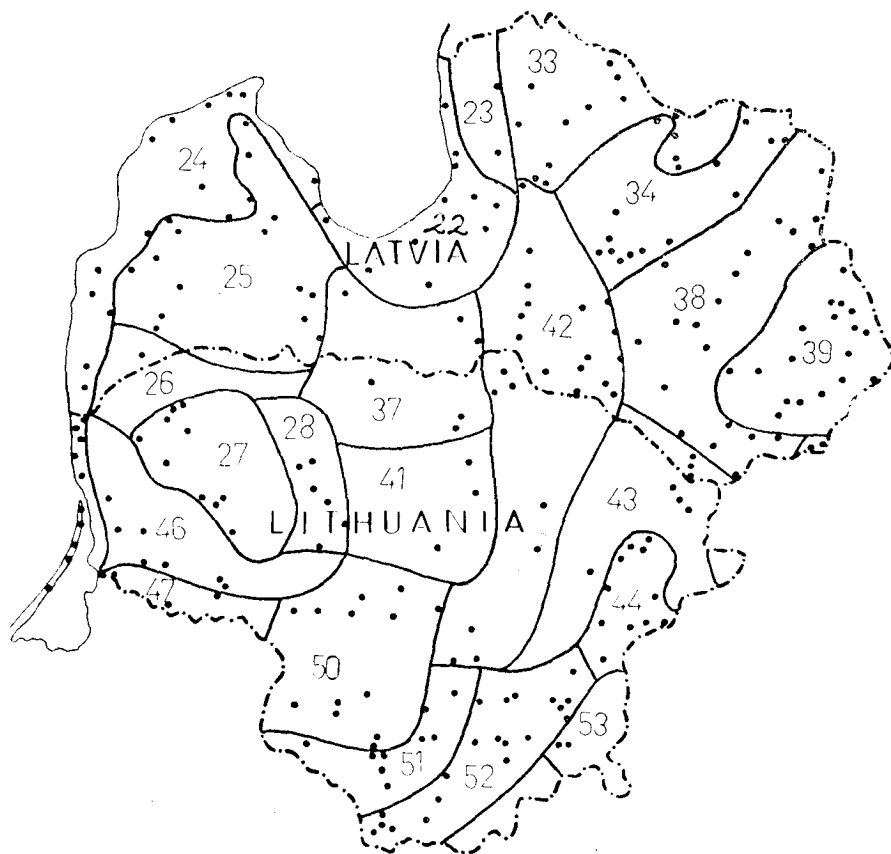


Fig. 1. Geobotanical regions of Latvia and Lithuania (after Couava et al., 1960): 22 — dune pine forests and raised peat bogs of Riga's environs; 23 — hardwood-spruce, spruce and mossy pine forests of West Vidzeme; 24 — lowland dry pine forests with dunes and "grinis" of Kurzeme; 25 — upland spruce and hardwood-spruce forests of Kurzeme; 26 — lowland spruce and spruce-pine forests of West Zemaite; 27 — upland spruce and spruce-pine forests, swampy meadows and fens of Zemaite; 28 — lowland hardwood-spruce, spruce forests and raised peat bogs of East Zemaite; 33 — mossy pine and lichen-pine forests of North Vidzeme; 34 — upland spruce forests of Central Vidzeme; 37 — hardwood and hardwood-spruce forests of basins of Lielupe and Musa Rivers; 38 — East Latvian lowland swampy pine forests, locally with spruce forests; 39 — upland spruce forests and mossy pine groves of East Latvia; 41 — hardwood-spruce forests of Central Lithuania; 42 — lowland hardwood-spruce, hardwood-pine, spruce and pine forests of Middle Baltic region; 43 — upland hardwood-spruce forests and swampy meadows of Aukštaitė; 44 — mossy pine forests of Zemaite; 46 — lowland spruce, spruce-pine and hardwood-spruce forests of Southwest Zemaite; 47 — flood-plain meadows, swampy meadows, bogs and alder forests of the basin of Lower Nemunas; 50 — hardwood-spruce and hardwood forests of the Middle Nemunas basin; 51 — upland hardwood-spruce and hardwood forests of Džūkai; 52 — sandy lichen-pine and mossy pine forests on the sandy areas of the basin of Merkine River.

The collecting localities of the author are indicated with small black dots.

	Latvia											Lithuania											E.	F.	S.	P.	G.					
	22	23	24	25	26	33	34	37	38	39	42	43	24	26	27	28	37	41	42	43	44	46						47	50	51	52	
<i>Criomorphus borealis</i> (J. Sb.)			●							●																		○	○	○	○	○
<i>Criomorphus moestus</i> (Bh.)										●																		○	○	○	○	○
<i>Paraliburnia adela</i> (Fl.)		○									●																	○	○	○	○	○
<i>Tyrphodelphax distinctus</i> (Fl.)	●	●								●	●										●							○	○	○	○	○
<i>Tyrphodelphax albocarinatus</i> (St.)	○									●	●																○	○	○	○	○	
<i>Florodelphax paryphasma</i> (Fl.)					●					●										●							○	○	○	○	○	
<i>Florodelphax leptosoma</i> (Fl.)							●			●										●							○	○	○	○	○	
<i>Hyledelphax elegantulus</i> (Bh.)	○		●	●			●	●		●	●	●	●		●				●	●		●					○	○	○	○	○	
<i>Acanthodelphax denticauda</i> (Bh.)	○		●	●		○	●			●	●			●						●							○	○	○	○	○	
<i>Acanthodelphax spinosus</i> (Fb.)	●										●								●		●	●		●	●		○	○	○	○	○	
<i>Struebingianella lugubrina</i> (Bh.)	●		●				●	●	●	●	○						●			●	●		●	●			○	○	○	○	○	
<i>Javesella forcipata</i> (Bh.)	●	●		●				●							●	●								●			○	○	○	○	○	
<i>Javesella discolor</i> (Bh.)	●		●	●	●			●					●			●	●							●			○	○	○	○	○	
<i>Javesella obscurella</i> (Bh.)	○		●	●		○	●	●	●	○					●				●			●	●				○	○	○	○	○	
<i>Javesella salina</i> (Hpt.)			●	●			●	●											●				●	●			○	○	○	○	○	
<i>Javesella dubia</i> (Kb.)	●		●	●			●	●		●	●		●	●	●	●			●	●	●	●	●	●	●	●	○	○	○	○	○	
<i>Javesella pellucida</i> (F.)	●	●	●	●	●		●	●	●	●	●	●	●	●					●	●	●	●	●	●	●	●	○	○	○	○	○	
<i>Javesella stali</i> (Mc.)	○	●		○				○															●	●			○	○	○	○	○	
Issidae																																
<i>Ommatidiotus dissimilis</i> (Fn.)	○	●	●	●		●	●			●	●		●						●		●	●					○	○	○	○	○	
Aphrophoridae																																
<i>Lepyronia coleoprata</i> (L.)	●	●	●	●		●	●		●	●	●						●			●		●	●	●	●		○	○	○	○	○	
<i>Peuceptyelus coriaceus</i> (Fn.)				●				●																			○	○	○	○	○	
<i>Aphrophora alni</i> (Fn.)	●	●	●	●		●	●	○	●	●	●		●	●	●	●	●	●	●	●	●	●	●	●	●	●	○	○	○	○	○	
<i>Aphrophora salicina</i> (Gz.)	●	●		●		●	●	○	●	●	●		●	●	●	●	●	●	●	●	●	●	●	●	●	●	○	○	○	○	○	
<i>Aphrophora costalis</i> Mm.	●		●	●				●	●	●	●		●														○	○	○	○	○	
<i>Philaenus spinarius</i> (L.)	●	●	●	●	●		●	●	○	●	●	●	●	●	●	●	●	●	●	●	●	●	●	●	●	●	○	○	○	○	○	
<i>Neophilaenus lineatus</i> (L.)	●	●	●	●		●	●	○	●	●	●	●		●													○	○	○	○	○	

	Latvia												Lithuania										E.	F.	S.	P.	G.				
	22	23	24	25	26	33	34	37	38	39	42	43	24	26	27	28	37	41	42	43	44	46						47	50	51	52
<i>Agallia brachyptera</i> (Bh.)	●		●	●	●	●	●	○	●	●	●		●		●					●	●	●	●	●	●	●	○	○	○	○	○
<i>Rhytidodus decimusquartus</i> (Schr.)																					●						○	○	○	○	○
<i>Idiocerus stigmaticalis</i> Lew.	○				●	●				●	●	●				●					●			●	●	●	○	○	○	○	○
<i>Idiocerus similis</i> Lew.																							●	●	●	●	○	○	○	○	○
<i>Idiocerus lituratus</i> (Fn.)	●	●	○	●		●	●	●	●	●	●	●	●			●	●				●	●	●	●	●	●	○	○	○	○	○
<i>Idiocerus poecilus</i> (H.-S.)		●	●	●																							○	○	○	○	○
<i>Idiocerus elegans</i> Fl.		○		●		○	●				●										●			●	●	●	○	○	○	○	○
<i>Idiocerus tremulae</i> (El.)				●				○	○		●													●	●	●	○	○	○	○	○
<i>Idiocerus laminatus</i> Fl.	●					○	○																				○	○	○	○	○
<i>Idiocerus albicans</i> Kb.										●																	○	○	○	○	○
<i>Idiocerus populi</i> (L.)	●	●	●	●		●	●	○		●	●	●				●		●		●	●			●	●	●	○	○	○	○	○
<i>Idiocerus confusus</i> Fl.	○	●	○	●	●	●	●	●	●	●	●	●				●	●		●	●	●	●		●	●	●	○	○	○	○	○
<i>Idiocerus fulgidus</i> (F.)																					●						○	○	○	○	○
<i>Iassus lanio</i> (L.)	○	●		●	●	●			●	●	●					●		●	●	●	●			●	●	●	○	○	○	○	○
<i>Batrachomorphus irroratus</i> Lew.																				●				●	●	●	○	○	○	○	○
<i>Batrachomorphus allionii</i> (Turt.)																								●	●	●	○	○	○	○	○
<i>Eupelix cuspidata</i> (F.)	●	○	●	●			●		○		●					●	●				●			●	●	●	○	○	○	○	○
<i>Aphrodes bicinctus</i> (Schr.)	○	●	●	●		●	●	●	●	●	●	●	●	●	●	●	●		●	●	●	●	●	●	●	●	○	○	○	○	○
<i>Aphrodes ochromelas</i> (Gm.)	●	●	●	●	●	●	●		●	●	●	●	●	●	●	●	●		●	●	●	●	●	●	●	●	○	○	○	○	○
<i>Aphrodes makarovi</i> Zv.																					●						○	○	○	○	○
<i>Aphrodes trifasciatus</i> (G.)											●										●						○	○	○	○	○
<i>Aphrodes bifasciatus</i> (L.)	●			●		●	●	○		●						●				○		●		●	●	●	○	○	○	○	○
<i>Aphrodes nigrilus</i> (Kb.)								○										●	●					●	●	●	○	○	○	○	○
<i>Aphrodes albifrons</i> (L.)	●					●	●		○		●																○	○	○	○	○
<i>Aphrodes albiger</i> (Gm.)	●					●		○																			○	○	○	○	○
<i>Aphrodes serratulae</i> (F.)		●					●													●	●						○	○	○	○	○
<i>Aphrodes flavostriatus</i> (Dn.)	●	○	●	●		●	●	○	○	○					●								●				○	○	○	○	○
<i>Aphrodes histrionicus</i> (F.)								○													●			●	●	●	○	○	○	○	○
<i>Stroggylocephalus agrestis</i> (Fn.)	●	●	●	●		●	●	○		●					●					●	●	●		●	●	●	○	○	○	○	○
<i>Stroggylocephalus livens</i> (Zs.)										●														●			○	○	○	○	○

	Latvia													Lithuania										E.	F.	S.	P.	G.				
	22	23	24	25	26	33	34	37	38	39	42	43	24	26	27	28	37	41	42	43	44	46	47						50	51	52	
<i>Aguriahana stellulata</i> (Grm.)		○				○	●	○		●															●			○	○	○	○	○
<i>Aguriahana pictilis</i> (St.)							○	○		●															●			○	○	○	○	○
<i>Aguriahana germari</i> (Zs.)	●		●				●	●		●			●								●			●	●	●		○	○	○	○	○
<i>Eurhadina concinna</i> (Grm.)										●											●			●	●	●		○	○	○	○	○
<i>Eurhadina pulchella</i> (Fn.)	●			●				●		●	●	●			●						●			●	●	●		○	○	○	○	○
<i>Eurhadina saageri</i> Wg.	●	●		●													●						●	●	●						○	
<i>Eurhadina kirschbaumi</i> Wg.			●															●													○	
<i>Eupteryx adspersa</i> (H.-S.)																										●					○	
<i>Eupteryx vittata</i> (L.)	●	●		●			●	●	●	●	●		●			●	●			●	●	●	●	●	●			○	○	○	○	
<i>Eupteryx notata</i> (Ct.)	●	●		●	●	●	●	●	●	●	●						●	●			●	●	●	●	●	●		○	○	○	○	
<i>Eupteryx atropunctata</i> (Gz.)	●	●		○			●	●	●	●	●						●				●	●	●	●	●	●		○	○	○	○	
<i>Eupteryx aurata</i> (L.)	●	●		●				○		●						●	●		●	●	●	●	●	●	●	●		○		○	○	
<i>Eupteryx origani</i> Zv.			●	●				●		●											●	●		●	●			○	○	○	○	
<i>Eupteryx signalipennis</i> (Bh.)							●	●		●	●	●	●	●	●	●	●	●	●	●	●	●	●	●	●	●		○	○	○	○	
<i>Eupteryx tenella</i> (Fn.)	○	●		●			●	●		●	●	●	●	●	●	●	●	●	●	●	●	●	●	●	●	●		○	○	○	○	
<i>Eupteryx urticae</i> (F.)	○			○				○		●	●	●	●	●	●	●	●	●	●	●	●	●	●	●	●	●		○	○	○	○	
<i>Eupteryx cyclops</i> (Mm.)	●	●	●	●			●	●		●	●	●	●	●	●	●	●	●	●	●	●	●	●	●	●	●		○	○	○	○	
<i>Eupteryx calcarata</i> (Oss.)					●					●	●	●	●	●	●	●	●	●	●	●	●	●	●	●	●	●		○	○	○	○	
<i>Eupteryx sachydearum</i> (Hdy.)	●	●		●	●			●	●	●	●	●			●	●					●	●	●	●	●	●		○	○	○	○	
<i>Eupteryx collina</i> (Fl.)	●	○						●		●													●	●	●	●		○	○	○	○	
<i>Linnavuoriana sexmaculata</i> (Hdy.)					●			●		●	●	●			●								●	●	●	●		○	○	○	○	
<i>Linnavuoriana decempunctata</i> (Fn.)					●			●		●	●	●			●								●	●	●	●		○	○	○	○	
<i>Typhlocyba quercus</i> (F.)	●	●					●	●		●	●	●					●						●	●	●	●		○	○	○	○	
<i>Typhlocyba bifasciata</i> (Bh.)		●		●				●		●								●						●	●	●		○	○	○	○	
<i>Fagocyba cruenta</i> (H.-S.)							●	●																●	●			○	○	○	○	
<i>Fagocyba carri</i> (Edw.)				●														●						●	●			○	○	○	○	
<i>Edwardsiana avellanae</i> (Edw.)										●	●							●										○	○	○	○	
<i>Edwardsiana staminata</i> (Rb.)																									●			○	○	○	○	
<i>Edwardsiana rosae</i> (L.)	○																											○	○	○	○	
<i>Edwardsiana salicicola</i> (Edw.)						●			●	●						●								●	●			○	○	○	○	

<i>Edwardsiana alnicola</i> (Edw.)				●	●	●	●																	○	○	○	○	○	○	○
<i>Edwardsiana ampliata</i> (Wg.)				●	●	●	●																							
<i>Edwardsiana soror</i> (Lv.)	●	●	●	●	●	●	●	●	●	●														○	○	○	○	○	○	○
<i>Edwardsiana prunicola</i> (Edw.)				●	●	●	●	●	●	●																				
<i>Edwardsiana barbata</i> (Rb.)				●	●	●	●	●	●	●																				
<i>Edwardsiana menzbieri</i> Zv.				●	●	●	●	●	●	●																				
<i>Edwardsiana gratiosa</i> (Bh.)			○	●	●	○	●	●	●	●																				
<i>Edwardsiana geometrica</i> (Schr.)		○		●	●	○	●	●	●	●															○	○	○	○	○	○
<i>Edwardsiana candidula</i> (Kb.)				●	●	○	●	●	●	●																				
<i>Edwardsiana plebeja</i> (Edw.)			●									●																		
<i>Edwardsiana flavescens</i> (F.)																														
<i>Edwardsiana tersa</i> (Edw.)																														
<i>Edwardsiana bergmanni</i> (Tg.)				●					●															○	○	○	○	○	○	○
<i>Edwardsiana hippocastani</i> (Edw.)																														
<i>EupteroCyba jucunda</i> (H.-S.)	○																													
<i>Ribautiana ulmi</i> (L.)	○			●					●																					
<i>Alnetoidia alneti</i> (Db.)	●	●	●	●	●	●	●	●	●	●																				
<i>Arboridia parvula</i> (Bh.)	●	●	●	●	●	●	●	●	●	●																				
<i>Arboridia ribauti</i> (Oss.)				●	●				●																					
<i>Arboridia erecta</i> (Rb.)			●																											
<i>Arboridia velata</i> (Rb.)																														
<i>Flammigeroidia flammigera</i> (Fc.)	●			●		○			●	●																				
<i>Flammigeroidia tiliae</i> (G.)		●		●					●	●																				
<i>Flammigeroidia suavis</i> (Ry.)				●					●																					
<i>Flammigeroidia ordinaria</i> (Rb.)			●				●																							
<i>Flammigeroidia roseipennis</i> (Tl.)	○	○	●			○																								
<i>Flammigeroidia rubrovittata</i> (Lt.)	●	○	○				○		●																					
<i>Hypericiella hyperici</i> (H.-S.)			○	●			○		●																					
<i>Zyginidia mocsaryi</i> (Hv.)				●																										
<i>Zyginidia viadensis</i> Wg.									●																					
<i>Doratūra stylata</i> (Bh.)	●	●	●	●	●	●	●	●	●	●																				
<i>Doratūra exilis</i> (Hv.)					●				●																					
<i>Doratūra homophyla</i> (Fl.)	●	●	●	●	●	●	●	●	●	●																				

	Latvia													Lithuania												E.	F.	S.	P.	G.
	22	23	24	25	26	33	34	37	38	39	42	43	24	26	27	28	37	41	42	43	44	46	47	50	51					
<i>Doratura impudica</i> Hv.	•					•		•										•						•	•	○		○	○	○
<i>Mocuellus collinus</i> (Bh.)	•	•	•	•		○	•	○	•	•	•		•						•	•	•	•	•		•	•	○	○	○	○
<i>Erzuleus metrius</i> (Fl.)	○						•			•																	○	○	○	○
<i>Sorhoanus assimilis</i> (Fn.)	•	•	•	•		•	•		•	•	•	•		•	•		•	•	•	•	•	•	•	•	•	•	○	○	○	○
<i>Sorhoanus xanthoneurus</i> (Fb.)	○						•								•						•	•				•	•	○	○	○
<i>Arthaldeus pascuellus</i> (Fn.)	•	•	•	•		•	•	•	•	•	•	•		•			•				•	•	•	•	•	•	○	○	○	○
<i>Arthaldeus striifrons</i> (Kb.)	•					•	•		•	•	•	•					•				•	•	•	•	•	•	○	○	○	○
<i>Verdanus abdominalis</i> (F.)	•	•	•	•	•	•	•	•	•	•	•	•		•	•		•	•	•	•	•	•	•	•	•	•	○	○	○	○
<i>Diptocolenus bohemani</i> (Zs.)	•		•	•		•	•		•	•	•	•				•			•								○	○	○	○
<i>Arocephalus languidus</i> (Fl.)	○			•				○	○	○	○	○												•			○	○	○	○
<i>Arocephalus punctum</i> (Fl.)	○		•	•		•	•		•	•	•		•								•	•					○	○	○	○
<i>Pinumius areatus</i> (St.)						•			•												•						○	○	○	○
<i>Adarrus multinotatus</i> (Bh.)					•						•																○	○	○	○
<i>Turrutus socialis</i> (Fl.)	•	•	○	•		•	•		•	•	•	•		•			•	•	•	•	•	•	•	•	•	•	○	○	○	○
<i>Errastunus ocellaris</i> (Fn.)	•	•	•	•		•	•		•	•	•	•		•			•	•	•	•	•	•	•	•	•	•	○	○	○	○
<i>Jassargus distinguendus</i> (Fl.)	•	○	•	•		•	•		•	•	•	•		•							•	•					○	○	○	○
<i>Jassargus flori</i> (Fb.)	○					•	•		○										•	•					•	•	○	○	○	○
<i>Jassargus repletus</i> (Fb.)	•			○		•	•																					○	○	○
<i>Jassargus neglectus</i> (Wg.)				•		•	•				•			•	•				•	•				•	•		○		○	○
<i>Jassargus sursumflexus</i> (Th.)	○		•	•		•			○		•																○	○	○	○
<i>Jassargus allobrogicus</i> (Rb.)	○		•	○							•																○	○	○	○
<i>Deliocephalus pulicaris</i> (Fn.)	•	•	•	•	•	•	•	•	•	•	•	•		•			•	•	•	•	•	•	•	•	•	•	○	○	○	○
<i>Psammotettix cephalotes</i> (H.-S.)	•	•	•	•	•	•	•	•	•	•	•	•		•			•	•	•	•	•	•	•	•	•	•	○	○	○	○
<i>Psammotettix makarovi</i> (Mr.)																											○	○	○	○
<i>Psammotettix pallidinervis</i> (Db.)	○					•	•		•	•				•					•	•					•	•	○	○	○	○
<i>Psammotettix koeleriae</i> Zv.									•									•												
<i>Psammotettix exilis</i> (Wg.)														•					•	•				•	•		○	○	○	○
<i>Psammotettix nodosus</i> (Rb.)			•	•					•	•									•	•				•	•		○	○	○	○
<i>Psammotettix alienus</i> (Db.)	•		•	•				•	•	•				•					•	•				•	•	•	○	○	○	○
<i>Psammotettix confinis</i> (Db.)	•	•	•	•	•	•	•	•	•	•	•	•		•	•	•	•	•	•	•	•	•	•	•	•	•	○	○	○	○

Psammotettix sabulicola (Ct.)
Psammotettix poecilus (Fl.)
Metalimnus formosus (Bh.)
Metalimnus marmoratus (Fl.)
Paralimnus phragmitis (Bh.)
Paramesus obtusifrons (St.)
Platymetopius undatus (Dg.)
Coryphaeus gyllenhali (Fn.)
Grypotes puncticollis (H.-S.)
Neoaliturus fenestratus (H.-S.)
Neoaliturus guttulatus (Kb.)
Allygus mixtus (F.)
Allygus commulatus (Fb.)
Graphocraerus ventralis (Fn.)
Stictocoris picturatus (C. Sb.)
Spidotettix subfuscus (F.)
Pithyotettix abietinus (Fn.)
Hesium domino (Rt.)
Hardya signifer (Th.)
Hardya tenuis (Grn.)
Scleroracus corniculus (Ms.)
Scleroracus plutonius (Uhl.)
Scleroracus decumanus (Kk.)
Scleroracus russeolus (Fn.)
Scleroracus transversus (Fn.)
Ophiolix paludosus (Bh.)
Limotettix striolus (Fn.)
Limotettix atricapillus (Bh.)
Limotettix sphagneticus Em.
Limotettix ochrifrons Vb.
Cicadula quadrinotata (F.)
Cicadula persimilis (Edw.)
Cicadula longiventris (J. Sb.)
Cicadula quinquenotata (Bh.)

	Latvia											Lithuania											E.	F.	S.	P.	G.										
	22	23	24	25	26	33	34	37	38	39	42	43	24	26	27	28	37	41	42	43	44	46						47	50	51	52						
<i>Cicadula nigricornis</i> (J. Sb.)						•	•				•								•						•	○	○										
<i>Cicadula saturata</i> (Edw.)				•	•		•											•	•							•	○	○	○							○	
<i>Cicadula albingensis</i> Wg.																		•									○	○	○							○	
<i>Cicadula flori</i> (J. Sb.)	○																•										○	○	○							○	
<i>Cicadula ornata</i> (Mel.)	○					•																					○	○	○							○	
<i>Cicadula frontalis</i> (H. S.)											○																○	○	○							○	
<i>Colladonus torneellus</i> (Zs.)	•	•	•																							•	○	○	○							○	
<i>Paluda preysleri</i> (H.-S.)	•	○	○	•			•		•	•	•									•					•		○	○	○							○	
<i>Paluda adumbrata</i> (C. Sb.)	○	•	•	•	•		•		•	•	•														•		○	○	○							○	
<i>Paluda vitripennis</i> (Fl.)				•	•		•		○		•														•	•	○	○	○							○	
<i>Paluda flaveola</i> (Bh.)				•	•		•		○		•														•	•	○	○	○							○	
<i>Elymana sulphurella</i> (Zs.)	•	•	•	•	•	•		○	•	•	•		•	•	•	•	•	•	•	•	•	•	•	•	•	•	○	○	○							○	
<i>Elymana ikumae</i> (Mm.)			•	•			•		•		•					•									•		○	○	○							○	
<i>Cosmotettix caudatus</i> (Fl.)	○			•	•				○		•																○	○	○							○	
<i>Cosmotettix panzeri</i> (Fl.)																											○	○	○							○	
<i>Cosmotettix costalis</i> (Fn.)	○			•			•		•		•														•		○	○	○							○	
<i>Cosmotettix aurantiacus</i> (Fr.)																										•		○	○							○	
<i>Doliotettix lunulatus</i> (Zs.)	•			•			•		•		•				•											•	○	○	○							○	
<i>Idiodonus cruentatus</i> (Pz.)	○			•	•		•		○		•					•				•	•					•	○	○	○							○	
<i>Lamprotettix nitidulus</i> (F.)		•		•							•														•		○	○	○							○	
<i>Thamnotettix confinis</i> (Zs.)	•	•	•	•			•		○		•						•								•	•	○	○	○							○	
<i>Macustus griseus</i> (Zs.)	•	•	•	○			•		○		•														•	•	○	○	○							○	
<i>Handianus flavovarius</i> (H.-S.)	•	•		•			•		○		•														•	•	○	○	○							○	
<i>Athysanus argentarius</i> Mc.	•	•		•			•		○		•														•	•	○	○	○							○	
<i>Athysanus quadrum</i> (Bh.)	•		○	○			•		○		•						•								•	•	○	○	○							○	
<i>Streptanus sordidus</i> (Zs.)	•	•	•	•			•		○		•						•								•	•	○	○	○							○	
<i>Streptanus aemulans</i> (Kb.)	•			•			•		○		•						•								•	•	○	○	○							○	
<i>Streptanus confinis</i> (Rt.)	•			•	•		•		○		•						•								•	•	○	○	○							○	
<i>Streptanus marginatus</i> (Kb.)	•	•	•	•			•		○		•					•									•	•	○	○	○							○	
<i>Euscelidius schenkii</i> (Kb.)	•										•															•	○	○	○							○	

Fam. *Cixiidae*

Oliarus leporinus (L., 1761). **Li**: Vilnius, attracted to electric lamp, 25.VII 1952, 1 ♂ (A. Kazlauskas). Doubtlessly occurs in La as well.

Tachycixius pilosus (Oll., 1791). **Li**: Inkakliai, park meadow with oaks, 17.—18. VIII 1968, 4 ♀ (E. R., J. V.).

Cixius distinguendus Kb. 1868. On various deciduous trees, 6 loc., 6 ♂, 11 ♀, 15.—30. VIII.

Cixius nervosus (L., 1758). On deciduous trees, 39 loc., 27 ♂, 32 ♀, 15.VI—27. VIII.

Cixius cunicularius (L., 1767). On deciduous trees, 12 loc., 5 ♂, 7 ♀, 8.VI—15. VIII.

Cixius similis Kb., 1868. In peat bogs and fens, where it lives on low shrubs (*Betula humilis*, *B. nana*, *Vaccinium*-species), 10 loc., 10 ♂, 21 ♀, 17.V—3.VII.

Fam. *Delphacidae*

Kelisia monoceros Rb., 1934. **La**: Taurekalne, sandy heathy area, on *Carex*, 29. VIII 1968, 1 ♂, 3 ♀.

Kelisia ribauti Wg. 1938. In marshes, fens, swampy meadows, etc., 11 loc., 24 ♂, 37 ♀, 13. VII—28. VIII.

Kelisia sabulicola Wg., 1952. On coastal sandy beaches, in inland sandy areas, on *Carices*, 4 loc., 69 ♂, 80 ♀, 18.—25. VIII.

Kelisia praecox Hpt., 1935. **La**: Ergeme, fen, 2. VII 1969, 1 ♀; **Li**: Pilekalniai, marshy meadow, 22. VIII 1967, 4 ♂, 5 ♀.

Kelisia guttula (Grm., 1818). In marshes, peatland meadows and other damp places, 9 loc., 123 ♂, 168 ♀, 12. VII—28. VIII.

Kelisia vittipennis (J. Sb., 1867). In fens, 8 loc., 23 ♂, 20 ♀, 13. VIII—27. VII.

Kelisia pallidula (Bh., 1849). In fens, peatland meadows and damp meadows, 21 loc., 58 ♂, 75 ♀, 12. VII—28. VIII.

Kelisia nervosa Vb., 1972. **Li**: Asveja, spring fen on the shore of the lake, 14.—15. VIII 1968, 19 ♂, 21 ♀; Ramygala, meadow, 13. VIII 1968, 1 ♂; Pilekalniai, 22. VIII 1967, 1 ♀ (E. R.).

Kelisia guttulifera (Kb., 1868). **Li**: Aukstadvaris, small fen, 14. VIII 1968, 1 ♂, 1 ♀.

Kelisia perspicillata (Bh., 1845). **La**: Kandava, flood meadow in river valley, 18. VIII 1967, 3 ♀; Sigulda, valley of Gauja River, 3 ♂ (L. Danka). Not found in Li, but doubtlessly occurs there.

Stenocranus major (Kb., 1868). **La**: Krimulda, dry meadow, 15. V 1968, 8 ♀ (K. E.); Auce, meadow on the sandy shore of the river, 12. VI 1968, 1 ♂, 2 ♀; Krape, meadow at wood edge, 30. VIII 1968, 3 ♂, 6 ♀.

Stenocranus fuscovittatus (St., 1858). **La**: marginal fen (lagg) of Stružanu raised peat bog, 8. VI 1954, 2 ♀. Doubtlessly more widely distributed, also in Li.

Chloriona smaragdula (St., 1853). On *Phragmites*, on shores of lakes and rivers, also in marshes, 17 loc., 63 ♂, 64 ♀, 12. VI—14. VII.

Chloriona stenoptera (Fl., 1861). **La**: Jumurda Lake, on *Phragmites*, 21. VI 1967, 1 ♂; Njukši Lake, on *Phragmites*, 16. VI 1967, 1 ♀.

Chloriona dorsata Edw., 1898. **La**: Berzgale, Micani Lake, on *Phragmites*, 8. VII 1969, 1 ♂, 1 ♀; **Li**: Juodkrante, on *Phragmites*, 20. VI 1965, 14 ♂, 37 ♀.

Chloriona glaucescens Fb., 1866. **La**: Ideni, fen, 10. VI 1954, 3 ♀; Durbe Lake, 14. VI 1968, 1 ♀.

Chloriona chinai Oss., 1946. **La**: Jumurda Lake, on *Phragmites*, 21. VI 1967, 1 ♂, 11 ♀.

Chloriona vasconica Rb., 1934. **La**: Ezerluki, on the shore of Zebrus Lake, 12. VI 1968, 1 ♂, 1 ♀.

Conomelus anceps (Grm., 1821). In moist meadows, fens, moist woods. Lives on *Juncus*- and *Schoenus*-species, 19 loc., 22 ♂, 48 ♀ (8 ♀ f. *macr.*), 11. VII—28. VIII.

Euconomelus lepidus (Bh., 1847). In fens, moist meadows, etc., 10 loc., 57 ♂, 51 ♀ (14 ♀ f. *macr.*), 4. VII—18. VIII.

Euides speciosa (Bh., 1845). **La**: Turna, Kukru Lake, on *Phragmites*, 2. VII 1969, 1 ♂.

Delphax crassicornis (Pz., 1796). On *Phragmites*, on shores of lakes and rivers, in marshes, is also attracted to light, 9 loc., 4 ♂, 1 ♀, 5 N, 7. VI — 25. VII.

Delphax pulchellus (Ct., 1833). Li: Žuvintas Lake, fen, 15. VII 1966, 1 ♂. Doubtlessly more widely distributed, also in La.

Megamelus notula (Grm., 1830). In fens, damp meadows, on shores of rivers and lakes, in moist woods. Lives on *Carex*-species, 35 loc., 186 ♂, 204 ♀ (7 ♂, 7 ♀, f. *macr.*), 6. VII — 29. VIII.

Delphacodes venosus (Grm., 1830). Curiously found only once during this investigation — La: Akniste, path in deciduous forest, 28. VIII 1968, 1 ♀. Certainly widely distributed in woods, also in Li.

Stiroma bicarinata (H.-S., 1835). One of the most widely distributed Delphacid species. Mostly in open habitats, in meadows, at road sides, but also in shrubs, more rarely in woods, 74 loc., 230 ♂, 285 ♀ (22 ♂, 35 ♀ f. *macr.*), 12. VI — 19. VII.

Stiroma affinis Fb., 1866. In deciduous and coniferous forests, 45 loc., 169 ♂, 241 ♀ (3 ♂, 22 ♀ f. *macr.*), 12. VI — 17. VII.

Stiromella obliqua (Wg., 1948). La: Sigulda, *Phragmitetum*, 4. VII 1969, 1 ♀.

Eurysula lurida (Fb., 1866). La: Sventa Lake, birch forest, 6. VII 1969, 1 ♀; Liepna, dry meadow on a small hill, 15. VI 1967, 1 ♀; Bušnieku Lake, *Calamagrostis epigeios* belt, 17. VI 1965, 1 ♂; Saka, dry pine forest, 14. VI 1968, 1 ♀; Li: Druškininkai, pine forest, 19. V 1966, 1 N; Labanoras, dry felled area 7. VII 1966, 1 ♀; Varduva, birch forest, 16. VI 1968, 1 ♂.

Kossowigianella exigua (Bh., 1847). Dry meadows, heaths, felled wood areas, sand areas with *Juniperus*, etc., 24 loc., 42 ♂, 39 ♀ (1 ♂, 1 ♀ f. *macr.*), 14. V — 23. VIII.

Oncodelphax pullulus (Bh., 1852). La: Liepna, fen, 15. VI 1965, 1 ♀ f. *brach.*, 1 ♀ f. *macr.*; Mežaine, Grini nature reserve, 18. VI 1965, 3 ♂, 4 ♀; 14. VI 1968, 2 ♀ f. *brach.*, 1 ♀ f. *macr.*; Kurtoška Lake, fen, 7. VII 1969, 1 ♀; Li: Andrioniškis, fen, 6. VII 1966, 1 ♀.

Delphacinus mesomelas (Bh., 1850). In dry meadows, at margins of dry pine forests, etc., 23 loc., 29 ♂, 69 ♀ (1 ♂, 4 ♀ f. *macr.*), 13. VI — 6. VII.

Paradelphax paludosus (Fl., 1861). La: Ideni, fen, 10. VI 1954, 1 ♂; Kolka, fen, 16. VI 1965, 2 ♂, 2 ♀ (1 ♂, 1 ♀ f. *macr.*); Li: Kaltiniai, bushes, 17. VII 1966, 1 ♀.

Muirodelphax aubei (Pr., 1857). In dry meadows, sandy areas, etc., 10 loc., 20 ♂, 35 ♀ (3 ♂, 5 ♀ f. *macr.*), 19. V — 18. VIII.

Xanthodelphax flaveolus (Fl., 1861). In dry meadows, 25 loc., 38 ♂, 46 ♀ (12 ♂, 8 ♀ f. *macr.*), 13. VI — 19. VII.

Xanthodelphax stramineus (St., 1858). In meadows, 24 loc., 56 ♂, 102 ♀ (9 ♂, 17 ♀ f. *macr.*), 13. VI — 27. VII.

Xanthodelphax xanthus Vb., 1965. La: Baltinava, on trees (birch, aspen), 16. VI 1967, 1 ♂ f. *macr.* One of the most interesting and unexpected records of present investigation. Previously known only from Altai.

Laodelphax striatellus (Fn., 1826). La: Saulkrasti, seashore, 25. VIII 1967, 1 ♂; Rite, damp meadow, 28. VIII 1968, 1 ♂; Li: Varena, sand area, 12. VII 1966, 1 ♀.

Unkanodes excisa (Ml., 1898). La: Mouth of Vitrupe River, on *Elymus*, 14. VI 1965, 2 ♂, 4 ♀ (2 ♂ f. *macr.*); Saulkrasti, sandy beach, 19. VI 1966, 1 ♂, 2 ♀ (1 ♀ f. *macr.*); Mazirbe, sandy beach, 16. VI 1965, 1 ♂, 1 ♀; Li: Palanga, on *Elymus*, 19. VI 1965, 2 ♂, 5 ♀; Druškininkai, on *Elymus*, 19. V 1966, 5 ♂, 13 ♀.

Ribautodelphax albostriatatus (Fb., 1866). In meadows, young forests, etc., 7 loc., 102 ♂, 82 ♀ (8 ♂, 26 ♀ f. *macr.*), 17. V — 22. VIII.

Ribautodelphax pallens (St., 1854). In dry meadows, light pine forests, on felled forest areas, etc., 19 loc., 65 ♂, 70 ♀, 17. V — 18. VIII.

Ribautodelphax collinus (Bh., 1847). In dry meadows, on hill-slopes, at roadsides, in sand areas, etc., 22 loc., 37 ♂, 59 ♀ (1 ♂, 7 ♀ f. *macr.*), 15. V — 18. VIII.

Ribautodelphax angulosus (Rb., 1947). La: Sivera Lake, dry hillside, 18. VI 1967, 1 ♂, 1 ♀; Turaida, dry hillside, 14. V 1968, 1 ♂ (K. E.).

Muellerianella fairmairei (Pr., 1857). Usually in forests, rarely in meadows, 17 loc., 26 ♀ (4 ♀ f. *macr.*), 11. VII — 28. VIII.

Muellerianella brevipennis (Bh., 1847). In forests, but also in meadows, 25 loc., 42 ♂, 78 ♀ (7 ♂, 10 ♀ f. *macr.*), 7. VII — 28. VIII.

Dicranotropis hamata (Bh., 1847). In dry and moist meadows, in light forests, also in fens, 62 loc., 121 ♂, 188 ♀ (1 ♂, 19 ♀ f. *macr.*), 13. VI — 22. VIII.

Gravesteiniella boldi (Sc., 1870). In sandy places: dunes, young pine forests, on beaches, etc., 12 loc., 51 ♂, 27 ♀ (2 ♂, 1 ♀ f. *macr.*), 18. VI — 27. VIII.

Criomorpus albomarginatus Ct., 1833. On forest edges, in dry pine and birch forests, more rarely in meadows, 27 loc., 40 ♂, 65 ♀ (4 ♂, 5 ♀ f. *macr.*), 14. V — 19. VII.

Criomorpus borealis (J. Sb., 1871). La: Alsunga, felled forest area, 14. VI 1968, 1 ♀.

Criomorpus moestus (Bh., 1847). La: Stružanu raised peat bog, 9. VI 1954, 3 ♂, 3 ♀; Ideni, fen, 10. VI 1954, 1 ♀; Liepna, fen, 15. VI 1967, 1 ♀; Baltinava, spruce forest, 16. VI 1967, 1 ♀ (E. R.).

Paraliburnia adela (Fl., 1861). La: Plaužu Lake, moist forest, 5. VII 1969, 1 ♂, 1 ♀ (E. R.); Li: Piniava, moist place in forest, 12. VIII 1969, 1 ♂.

Tyrphodelphax distinctus (Fl., 1861). In raised peat bogs, 11 loc., 31 ♂, 43 ♀, 17. V — 8. VII.

Tyrphodelphax albocarinatus (St., 1858). La: Stružanu, raised peat bog, marginal area (Iagg), 8. VI 1954, 1 ♂.

Fiorodelphax paryphasma (Fl., 1861). La: Stružanu, raised peat bog, Iagg, 8. VI 1954, 1 ♂; shore of Durbe Lake, 15. VI 1968, 1 ♂ (f. *macr.*); Li: Birštonas, dry hill-slope, 14. V 1966, 1 ♀; Zarasai, shore of the lake, 4. VII 1964, 1 ♀.

Fiorodelphax leptosoma (Fl., 1861). La: Silini, damp place in forest, 28. VIII 1968, 2 ♂.

Hyledelphax elegantulus (Bh., 1847). In forests (pine, spruce, birch, oak, etc., forests), 32 loc., 64 ♂, 132 ♀ (among them 1 ♂ of very rare f. *macr.*), 14. VI — 9. VII.

Acanthodelphax denticauda (Bh., 1847). In dry meadows, 7 loc., 4 ♂, 8 ♀, 17. V — 21. VI.

Acanthodelphax spinosus (Fb., 1866). In dry meadows, in forests. Its range extends northwards up to Daugava basin, 15 loc., 20 ♂, 28 ♀, 13. V — 29. VIII.

Struebingianella lugubrina (Bh., 1847). On *Glyzeria*, in wet forests, on lake shores, in bushes, etc., 30 loc., 29 ♂, 116 ♀ (2 ♂, 16 ♀ f. *macr.*), 9. VI — 15. VIII.

Javesella forcipata (Bh., 1847). In deciduous forests and shrubs, 8 loc., 11 ♂, 13 ♀ (1 ♀ f. *macr.*), 13. VI — 16. VII.

Javesella discolor (Bh., 1847). In deciduous and coniferous forests, 14 loc., 16 ♂, 64 ♀ (2 ♀ f. *macr.*), 15. VI — 5. VII.

Javesella obscurella (Bh., 1847). On river banks, lake shores, more rarely in damp forests, 20 loc., 31 ♂, 56 ♀ (6 ♂, 11 ♀ f. *macr.*), 17. V — 23. VIII.

Javesella salina (Hpt., 1924). Li: Punia forest, damp meadow, 13. VII 1966, 1 ♂.

Javesella dubia (Kb., 1868). In various forests, in meadows, in bogs, etc., 68 loc., 86 ♂, 112 ♀ (14 ♂, 26 ♀ f. *macr.*), 14. V — 28. VIII.

Javesella pellucida (F., 1794). Eurytopic species, occurring almost in any kind of habitats, 86 loc., 100 ♂, 121 ♀ (89 ♂, 108 ♀ f. *macr.*), 14. V — 29. VIII.

Javesella stali (Mc., 1943). On the banks of rivers and brooks on *Equisetum* spp., 16 loc., 43 ♂, 93 ♀ (3 ♂, 10 ♀ f. *macr.*), 14. V — 16. VII.

Fam. *Issidae*

Ommatidiotus dissimilis (Fn., 1806). In fens, raised peat bogs, more rarely in moist meadows, 15 loc., 11 ♂, 38 ♀, 33 N, 7. VII — 28. VIII.

Fam. *Aphrophoridae*

Lepyronia coleoprata (L., 1758). In fens, moist meadows, on river banks, etc., more rarely in dry habitats, 26 loc., 48 ♂, 35 ♀, 18. VI — 29. VIII.

Puceptelyelus coriaceus (Fn., 1826). **La:** Kandava, spruce forest, 18.VIII 1967, 1 ♀; **Li:** Birštonas, spruce forest, 15. V 1966, 2 ♂.

Aphrophora alni (Fn., 1805). Mostly on deciduous trees, also in herb layer of woods, etc., 119 loc., 183 ♂, 180 ♀, 18. VI — 30. VIII.

Aphrophora salicina (Gz., 1778). On willows, 42 loc., 78 ♂, 47 ♀, 2. VII — 29. VIII.

Aphrophora costalis Mm., 1903. On willows, 13 loc., 9 ♂, 10 ♀, 4. VII — 30. VIII.

Philaenus spumarius (L., 1758). Eurytopic species which occurs in all kind of habitats. Is although most abundant in dry meadows, 180 loc., 5936 ♂, 4491 ♀, 213 N, 18. VI — 29. VIII.

Neophilaenus lineatus (L., 1758). In fens, moist meadows, damp forests, 63 loc., 338 ♂, 369 ♀, 29. VI — 29. VIII.

Neophilaenus pallidus (Hpt., 1917). **Li:** Only on sand dunes of Courland spit, 21. VIII 1967, 10 ♂, 9 ♀.

Neophilaenus minor (Kb., 1868). In sandy places on *Koeleria*. The range extends northwards only up to Daugava basin, 9 loc., 71 ♂, 42 ♀, 32 N, 14. VI — 15. VII.

Neophilaenus campestris (Fn., 1805). Rare. In dry meadows, 10 loc., 8 ♂, 9 ♀, 13. VI — 23. VIII.

Neophilaenus exclamationis (Tb., 1784). On dry pine forest edges, lives on *Festuca* spp., 39 loc., 157 ♂, 196 ♀, 12. VI — 29. VIII.

Fam. Membracidae

Centrotus cornutus (L., 1758). On various trees and shrubs, 9 loc., 1 ♂, 8 ♀, 3 N, 14. VI — 23. VIII.

Fam. Cicadellidae

Ulopa reticulata (F., 1794). On *Calluna* heaths, in raised peat bogs, 10 loc., 2 ♂, 13 ♀, 15 N, 14. VI — 18. VII.

Megophthalmus scanicus (Fn., 1806). In meadows. Rare, 10 loc., 7 ♂, 4 ♀, 3 N, 12. VII — 28. VIII.

Oncopsis alni (Schr., 1801). On *Alnus* species, everywhere, 25 loc., 15 ♂, 23 ♀, 13. VI — 11. VII.

Oncopsis flavicollis (L., 1761). On *Betula* species, found also on *Tilia*, *Carpinus*, *Populus*, 38 loc., 66 ♂, 54 ♀, 8. VI — 15. VIII.

Oncopsis carpini (J. Sb., 1871). **Li:** Gargždai, *Carpinetum*, 20.—21. VI 1965, 6 ♂, 11 ♀, 2 N; Daugai, deciduous forest, 12. VII 1966, 1 ♂, 2 ♀; Aukštadvaris, on deciduous trees, 14. VIII 1968, 1 ♀.

Oncopsis subangulata (J. Sb., 1871). **La:** Sivera Lake, on deciduous trees, 18. VI 1967, 4 ♂, 10 ♀, 10 N; Rudžeti, dry pine forest, 20. VI 1967, 1 ♀; **Li:** Inkakliai, on deciduous trees, 18. VI 1968, 1 ♂, 1 N.

Oncopsis tristis (Zs., 1840). On birches, rare, 8 loc., 6 ♂, 4 ♀, 20. VI — 16. VII.

Oncopsis appendiculatus Wg., 1944. **La:** Sventes Lake, on deciduous trees, 6. VII 1969, 1 ♂; Rušanu Lake, on trees, 7. VII 1969, 3 ♂, 1 ♀, 2 N. Gulbene, felled forest area, 9. VII 1969, 1 ♀; **Li:** Paroveja, on deciduous trees, 6. VII 1966, 1 ♀.

Macropsis fuscula (Zs., 1828). In deciduous forests where it lives on *Rubus idaeus*, 18 loc., 24 ♂, 40 ♀, 4 N, 4. VII — 26. VIII.

Macropsis marginata (H.-S., 1836). On willows. 45 loc., 183 ♂, 246 ♀, 56 N, 16. VI — 28. VIII.

Macropsis albae Wg., 1950. On willows in drier habitats, 10 loc., 6 ♂, 10 ♀, 16 N, 16. VI — 16. VII.

Macropsis mendax (Fb., 1868). **Li:** Alytus, on the bank of Nemunas River, 13. VII 1966, 1 ♀.

Macropsis infuscata (J. Sb., 1871). On willows, 39 loc., 52 ♂, 58 ♀, 39 N, 13. VI — 21. VIII.

Macropsis viridinervis Wg., 1950. **Li:** Nemenčine, on river bank, on willows, 10. VII 1966, 1 ♀; Ilgininkai, fen, 13. VII 1966, 1 ♀; Kapstukas, on willows, 16. VII 1966, 1 ♀.

Macropsis impura (Bh., 1847). On willows, 17 loc., 36 ♂, 18 ♀, 23 N, 17. VI — 14. VIII.

Macropsis cerea (Grm., 1837). On willows, 35 loc., 36 ♂, 33 ♀, 14 N, 17. VI — 18. VIII.

Macropsis prasina (Bh., 1852). On willows, 37 loc., 92 ♂, 53 ♀, 76 N, 15. VI — 20. VIII.

Macropsis fuscineruis (Bh., 1845). On *Populus*, 9 loc., 5 ♂, 16 ♀, 3. — 16. VII.

Hephathus nanus (H.-S., 1835). In dry meadows, 10 loc., 10 ♂, 1 ♀, 29. VI — 14. VII.

Macropsidius sahlbergi (Fl., 1861). La: Silezers, sandy area, 13. VI 1966, 1 ♀ (K. E.); Piedruja, on *Koeleria glauca*, 19. VI 1967, 1 ♂; Dunava, sandy area, 6. VII 1969, 2 ♂, 2 ♀; Li: *Pabrade*, sandy area, 9. VII 1966, 1 ♂, 2 ♀.

Anacertagallia venosa (Fc., 1785). In dry meadows, 12 loc., 9 ♂, 21 ♀, 5. VII — 29. VIII.

Anacertagallia ribauti (Oss., 1938). In meadows in sandy places, 12 loc., 8 ♂, 5 ♀, 13. VII — 23. VIII.

Anacertagallia lithuanica n. sp. Only the male is known. Very similar to other species of the genus and with certainty separable only by male genitalia.

Ochraceous with brownish-black to black pattern. Thyreoidal spots are great, reaching almost the hind margin of the vertex as well as the widening forward median spot.

Median band of frons forks in the upper part of it. Below it there is a light spot, in the middle of which is a triangular spot. Light spots around ocelli. Lower part of frons black. Anteclypeus with light side margins. Lorae also black, only the upper angle light. Antennal pits light, a narrow dark band goes along the frontal suture to the lorae. In the middle of genae there is a dark, somewhat arched longitudinal band which is connected with dark lorae. Basal joints of antennae dark-ringed.

Pronotum with spindle-formed longitudinal middle spot, which is broadest somewhat before the middle. On the $\frac{1}{4}$ of the length there is a dark spot which is connected with a cross spot at the fore margin of the pronotum. Behind the median angle of the eyes a light cross spot exists. In the hind part of pronotum there is a dark spot, which is laterally and medially bordered by light bands. Scutellum with small dark basal triangles and with an X-formed figure in the middle. Fore wings greyish-ochraceous, with dark-brown veins. Basal parts of claval veins blackish-brown. Hind wings membranaceous with brownish veins. Legs with dark longitudinal bands.

Abdomen blackish-brown.

Male genitalia see Fig. 2A — I.

Measurements in millimetres: Length to the tip of fore wings — 2.92, to the end of abdomen — 2.18; length of the vertex — 0.22; width of the head — 1.08; width of the vertex — 0.73; length of pronotum — 0.48; width of pronotum — 0.97; length of fore wing — 2.40; width of fore wing — 0.85; length of the hind tibia — 1.44.

Holotype ♂: Lithuanian SSR, Nemenčine, meadow with *Nardus*, 14. VIII 1968.

The new species is externally very similar to *A. ribauti* (Oss.). It has a similar pointed tip of elytra, only the appendix of fore wings is somewhat broader. Also the genitalia are quite similar: genital plates are relatively long, about 2 times as long as the subgenital plate (1.2 times in *ribauti*). Aedeagus is more slender, the lower part of stem is not broadened, and the teeth on its hind surface reach up to the hind angle. The

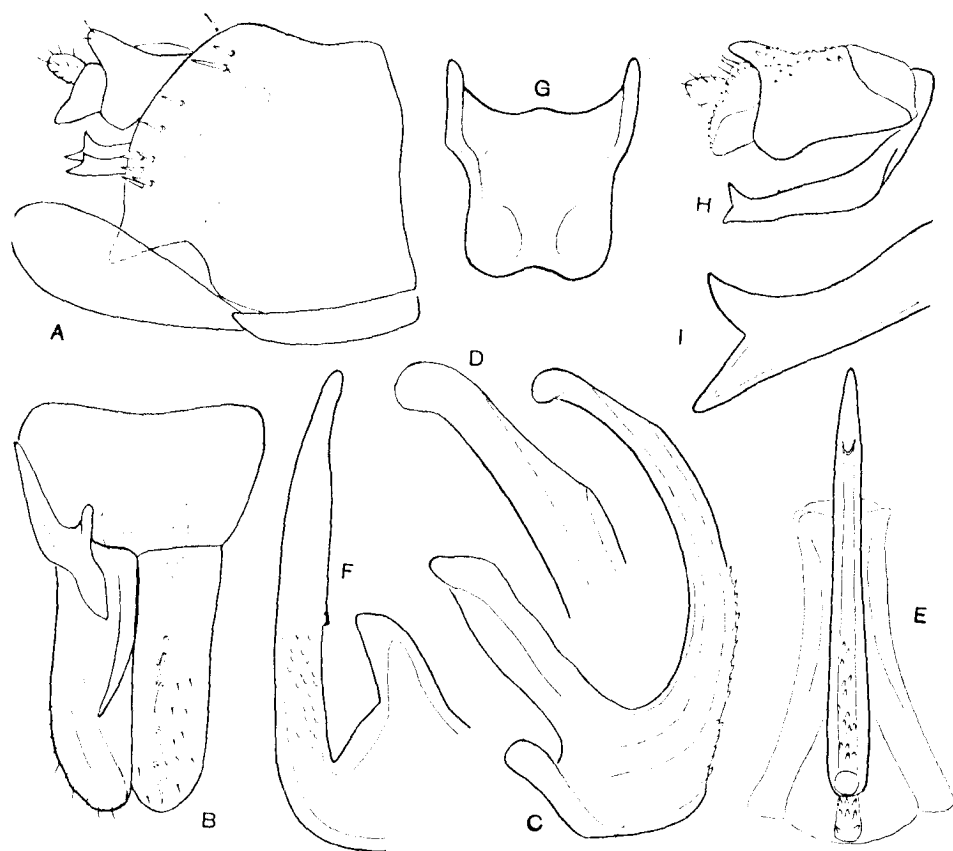


Fig. 2. *Anacertagallia lithuanica* n. sp. Male genitalia: A — genital segment, lateral view (enlargement 82×); B — genital valve and plates (left dorsal, right ventral view) (82×); C — aedeagus, lateral view (250×); D — tip of aedeagus, lateral view (500×); E — aedeagus, dorsal and caudal view (250×); F — stylus (250×); G — connective (150×); H — anal tube (112×); I — tip of anal tube appendage (375×).

tip of aedeagus has a broadening in the fore part. Appendix of anal tube is also two-tipped, but its directed upward branch is longer and not toothed.

Agallia brachyptera (Bh., 1847). In various habitats: in meadows, fens and also forests, 66 loc., 39 ♂, 205 ♀, 70 N, 1. VII—29. VIII.

Rhytidodus decimusquartus (Schr., 1776). Li: Pabrade, on *Populus*, 9. VII 1968, 1 ♂.

Idiocerus stigmatalis Lew., 1834. On willows. Rare, 13 loc., 12 ♂, 14 ♀, 2. VII—29. VIII.

Idiocerus similis Kb., 1868. Only in South Lithuania, on willows, Li: Nemenčine, 9. VII 1966, 2 ♂, 2 ♀; Seredžius, 16. VII 1966, 1 ♂, 2 ♀; Piniava, 12. VIII 1968, 2 ♀.

Idiocerus lituratus (Fn., 1806). Everywhere on willows, 38 loc., 58 ♂, 85 ♀, 12. VII—28. VIII.

Idiocerus poecilus (H.-S., 1835). On willows. La: Kandava, 18. VIII 1967, 6 ♂, 1 ♀; Vilgaļa Lake, 19. VIII 1967, 3 ♂; Li: Sventoji River, 20. VIII 1967, 1 ♂, 1 ♀.

Idiocerus elegans Fl., 1861. On willows. Rare, 5 loc., 1 ♂, 7 ♀, 7. VII—29. VIII.

Idiocerus tremulae (El., 1796). La: Piedruja, 2. VII 1964, 1 ♀; Kandava, Velna ala, 18. VIII 1967, 1 ♀; Li: Seredžius, 16. VII 1966, 1 ♂; Ažuolu-Buda, 16. VII 1966, 1 ♀; Alytus, 3. VII 1968, 1 ♀.

- Idiocerus laminatus* Fl., 1861. La: Bukas, birch forest, 4. VII 1969, 1 ♂.
- Idiocerus albicans* Kb., 1868. La: Kraslava, on *Populus alba*, 2. VII 1964, 12 ♂, 15 ♀, 2 N.
- Idiocerus populi* (L., 1761). Everywhere on asp, 37 loc., 73 ♂, 74 ♀, 3. VII — 28. VIII.
- Idiocerus confusus* Fl., 1861. Everywhere on willows, 48 loc., 47 ♂, 45 ♀, 7. VII — 29. VIII.
- Idiocerus fulgidus* (F., 1775). Li: Pabrade, on *Populus*, 9. VII 1968, 1 ♂, 2 ♀.
- Batrachomorphus irroratus* Lew., 1834. Li: Valkininkiai, juniper stand, 11. VII 1966 and 23. VIII 1967, 1 ♂, 1 ♀, 5 N; Ignalino, felled forest area, 8. VII 1966, 1 N; Veisiejai Lake, dry hillside, 15. VII 1966, 1 ♂.
- Batrachomorphus allionii* (Trt., 1802). Li: Kapsukas, young larch forest, 16. VII 1966, 1 ♂; Buda, small fen, 13. VIII 1968, 1 ♀; Aukštadvaris, on trees, 14. VIII 1968, 1 ♀.
- Eupelix cuspidata* (F., 1775). In sandy places, 18 loc., 15 ♂, 7 ♀, 1 N, 14. VI — 13. VIII.
- Aphrodes bicinctus* (Schr., 1776). In damper meadows, fens, broad-leaved forests, more rarely in dry meadows, 55 loc., 35 ♂, 35 ♀, 1. VII — 28. VIII.
- Aphrodes ochromelas* (Gm., 1790). In dry meadows, in sandy places, more rarely in damp meadows, 96 loc., 36 ♂, 45 ♀, 6. VII — 28. VIII.
- Aphrodes makarovi* Zv., 1948. Li: Andrieniškis, dry meadow on the bank of river, 6. VII 1966, 1 ♂; Veisiejai, dry hillside with pines, 14. VII 1966, 1 ♂; birch forest, 15. VII 1966, 3 ♂, 3 ♀; Seredzius, meadow on the bank of a brook, 16. VII 1966, 2 ♂, 4 ♀.
- Aphrodes trifasciatus* (G., 1785). La: Taurėkalne, heath, 29. VIII 1968, 1 ♀; Li: Ignalino, felled forest area, 8. VII 1966, 1 ♂; Veisiejai, on dry hill-slope, 14. VII 1966, 6 ♂, 6 ♀, 1 N.
- Aphrodes bifasciatus* (L., 1758). In dry (and damp) meadows, in fields, 11 loc., 12 ♂, 13 ♀, 18. VI — 19. VII.
- Aphrodes nigrinus* (Kb., 1868). Li: Alytus, *Carpinus* forest, 3. VII 1967, 1 ♂; Biržai, meadow, 5. VII 1966, 1 ♀; Panevežis, mixed forest, 6. VII 1966, 1 ♂; Meteliai, *Alnus glutinosa* wood, 15. VII 1966, 1 ♂, 1 N; Alvitai, young pine forest, 22. VIII 1967, 1 ♀.
- Aphrodes albiger* (Gm., 1821). La: Valmiera, in a clover field, 19. VII 1966; Riga, 4. VIII and 13. VIII 1970, 2 ♂, 1 ♀ (L. Danka).
- Aphrodes serratulae* (F., 1775). La: Jumurda, hill-slope in park, 21. VI 1967, 1 N; Li: Andrieniškis, dry meadow, 6. VII 1966, 1 N; Aišėtos, damp meadow, 7. VII 1966, 5 N; Dringai Lake, pasture, 9. VII 1966, 1 N.
- Aphrodes flavostriatus* (Dn., 1799). In meadows, in light woods, 8 loc., 10 ♂, 5 ♀; 17. VII — 20. VIII.
- Aphrodes histrionicus* (F., 1794). Li: Alytus, *Carpinus* forest, 3. VII 1966, 1 ♂; Pabrade, sand area, 9. VII 1966, 1 ♂; Veisiejai, dry hill-slope, 14. VII 1966, 1 ♂; *Corylus* stand, 15. VII 1966, 1 ♂; birch forest, 15. VII 1967, 1 ♂.
- Stroggylocephalus agrestis* (Fn., 1806). In fens, on lake shores, 21 loc., 49 ♂, 28 ♀, 7 N, 17. VII — 29. VIII.
- Stroggylocephalus livens* (Zs., 1840). La: Varaklani, swampy logging area, 20. VI 1967, 1 N; Li: Zuvinto Lake, peat bog, 17. V 1966, 13 ♀, 1 N.
- Evacanthus interruptus* (L., 1758). In woods and bushes, more rarely in damp meadows, in fens, in fields, etc., 20 loc., 22 ♂, 40 ♀, 29. VI — 14. VIII.
- Evacanthus acuminatus* (F., 1794). In damp woods and bushes, 20 loc., 15 ♂, 23 ♀, 14. VI — 14. VIII.
- Cicadella viridis* (L., 1758). In damp, open places (meadows, fens, lake shores, river banks, etc.), 134 loc., 291 ♂, 477 ♀, 600 N, 6. VII — 28. VIII.
- Alebra albostriella* (Fn., 1826). On deciduous trees (oak, lime, etc.), 10 loc., 13 ♂, 12 ♀, 4. VII — 22. VIII.
- Alebra wahlbergi* (Bh., 1845). On deciduous trees (oak, ash, etc.), 10 loc., 7 ♂, 39 ♀, 5. VII — 18. VIII.

Alabra neglecta Wg., 1940. **Li:** Pircupis, alder wood, 11.VII 1966, 1 ♂; Veiseiai, aspen wood, 15.VII 1966, 1 ♀.

Notus flavipennis (Zs., 1828). In moist meadows, in moorland, on shores of water bodies, etc., 115 loc., 471 ♂, 656 ♀, 88 N, 4.VI — 29.VIII.

Forcipata citrinella (Zs., 1828). In moist meadows, fens, shrubs, but also in woods; rarely in drier habitats, 130 loc., 540 ♂, 688 ♀, 85 N, 14.VI — 30.VIII.

Forcipata forcipata (Fl., 1861). In drier habitats than preceding species, but also in damp meadows, in fens, etc., 57 loc., 93 ♂, 188 ♀, 19 N, 14.VI — 29.VIII.

Micantulina pseudomicantula (Kn., 1966). **Li:** Babtai, on linden, 13.VIII 1968, 1 ♀ (A. V.).

Emelyanoviana mollicula (Bh., 1845). In dry meadows and in light pine woods, 26 loc., 60 ♂, 86 ♀, 11.VI — 29.VIII.

Wagneriata minima (J. Sb., 1871). On sand dunes, in dry meadows, on sandy areas, 9 loc., 16 ♂, 8 ♀, 11 N, 3.VII — 17.VIII.

Dikraneura variata (Hdy., 1850). In light pine forests, on sandy areas, 13 loc., 46 ♂, 54 ♀, 12 N, 13.VI — 25.VIII.

Erythria aurcola (Fn., 1806). On heather, 6 loc., 4 ♂, 43 ♀, 1 N, 19.VI — 29.VIII.

Kybos smaragdulus (Fn., 1806). On alders, 52 loc., 151 ♂, 117 ♀, 18.VI — 29.VIII.

Kybos lindbergi (Lv., 1951). On birches, 10 loc., 16 ♂, 17 ♀, 30.VI — 9.VII.

Kybos strigulifera (Oss., 1941). **La:** Kraukle, on trees, 27.VIII 1968, 4 ♂, 8 ♀, 16 N.

Kybos virgator (Rb., 1933). On willows, 15 loc., 79 ♂, 91 ♀, 35 N, 20.VI — 29.VIII.

Kybos verbae (Zv., 1953). **La:** Saulkrasti, on willows, 25.VIII 1967, 3 ♂, 12 ♀, 12 N.

Kybos butleri (Edw., 1908). On willows and alders, 29 loc., 44 ♂, 62 ♀, 47 N, 15.VI — 20.VIII.

Kybos absirusus (Lv., 1949). **Li:** Papušinis, on willows, 19.VI 1968, 6 ♂, 2 ♀, 26 N.

Kybos oshanini Zv., 1953. On willows and alders, once also on linden, 23 loc., 63 ♂, 86 ♀, 54 N, 18.VI — 29.VIII.

Kybos populi (Edw., 1908). **La:** Olinkalns, felled forest area, 6.VII 1964, 1 ♂; Bebrini, dry meadow, 8.VII 1964, 5 ♀; Silovka Lake, on aspen, 3.VII 1964, 1 ♀; on the bank of Pededze River, on aspen, 9.VII 1969, 1 ♂, 1 ♀.

Chlorita viridula (Fn., 1806). Rare. **La:** Mouth of Vitrupe River, 14.VI 1965, 1 ♂, 4 ♀, 1 N; Piedruja, *Koeleria*-patch, 19.VI 1967, 1 ♂. Most specimens recorded by Velche and Danka (1970) without any doubt belong to *Chl. paolii* (Oss.).

Chlorita paolii (Oss., 1939). In sandy places on *Artemisia campestris*, 79 loc., 389 ♂, 733 ♀, 29 N, 18.V — 30.VIII.

Chlorita dumosa (Rb., 1933). **La:** Baltinava, light forest edge, 16.VI 1967, 1 ♂, 1 ♀; Dunava, dry meadow on sandy soil, 6.VII 1969, 2 ♀; **Li:** Streva, dry hill-slope, 11.VII 1966, 1 ♀; Ziežmariai, 23.VIII 1967, 1 ♀.

Austroasca vittata (Lt., 1884). **Li:** Pabrade, dry hill-slope, 9.VII 1966, 3 ♂, 10 ♀; Ariogala, dry meadow, 19.VI 1958, 1 ♂, 2 ♀; Aukštadvaris, *Artemisia* patch, 13.VIII 1968, 30 ♂, 42 ♀.

Empoasca vilis (Gth., 1875). On deciduous trees, 50 loc., 55 ♂, 97 ♀, 4 N, 13.VI — 30.VIII. In spring only females, males beginning with 13.VIII.

Empoasca kontkaneni Oss., 1949. **La:** Liepna, dry hill-slope, 15.VI 1967, 1 ♂, 1 ♀; Nica, damp birch forest, 20.VIII 1967, 1 ♂; Silini, swampy forest, 28.VIII 1968, 2 ♂, 1 ♀; Akniste, deciduous forest, 28.VIII 1968, 10 ♂, 9 ♀, 5 N; Krape, 30.VIII 1968, 1 ♂, 1 ♀ (A. V.).

Empoasca ossiannilsson Nrt., 1948. **La:** Vireši, birch forest, 26.VIII 1968, 1 ♂ (A. V.); Skriveri, park, 29.VIII 1968, 2 ♂, 2 ♀.

Empoasca decipiens Pl., 1930. Vireši, birch forest, 26.VIII 1968, 1 ♂, 1 ♀, Cesvaine, park, 27.VIII 1968, 1 ♂; **Li:** Dringai, potato field, 8.VII 1966, 3 ♂; Pabrade, dry meadow, 9.VII 1966, 1 ♂; Aukštadvaris, small fen, 14.VIII 1968, 2 ♂; Alytus, deciduous forest, 22.VIII 1967, 1 ♂.

- Empoasca solani* (Cl., 1846). In herb layer of woods, in fens, moist meadows, potato fields, also on deciduous trees, etc., 67 loc., 319 ♂, 254 ♀, 6 N, 15. VI—30. VIII.
- Empoasca apicalis* (Fl., 1861). La: Kandava, spruce forest, 18. VIII 1967, 4 ♂, 2 ♀.
- Aguriahana stellulata* (Brm., 1841). La: Olinkalns, on ash-tree, 6. VII 1964, 1 ♂; Li: Seiriai, on oak-tree, 15. VII 1966, 1 ♂.
- Aguriahana pictilis* (St., 1853). La: Ilza Lake, bilberry-spruce forest, 30. VI 1964, 1 ♀.
- Aguriahana germari* (Zs., 1840). On pine-trees, 16 loc., 11 ♂, 17 ♀, 14 N, 13. VII—27. VIII.
- Eurhadina concinna* (Gm., 1831). La: Lendzi, on deciduous trees, 30. VI 1964, 1 ♀; Li: Punia, on oaks, 13. VII 1966, 1 ♀; Daugai, on deciduous trees, 12. VII 1966, 1 ♀; Alytus, deciduous forest, 22. VIII 1967, 1 ♀; Asveja Lake, on oaks, 15. VIII 1968, 2 ♀.
- Eurhadina pulchella* (Fn., 1806). On deciduous trees (oaks, birches, etc.), 13 loc., 9 ♂, 25 ♀, 30. VI—27. VIII.
- Eurhadina saageri* Wg., 1937. On oaks, 6 loc., 6 ♂, 13 ♀, 13. VII—22. VIII.
- Eurhadina kirschbaumi* Wg., 1937. La: Gostini, deciduous trees, 28. VIII 1968, 1 ♀.
- Eupteryx adpersa* (H.-S., 1838). Li: Aukštadvaris, *Artemisia* vegetation, 13.—14. VIII. 1968, 2 ♂, 7 ♀.
- Eupteryx vittata* (L., 1758). Mainly in woods, but also in damp meadows, fens, etc., 33 loc., 36 ♂, 35 ♀, 14. VI—28. VIII.
- Eupteryx notata* Cl., 1837. In dry meadows, where it lives on *Hieracium pilosella*, 55 loc., 94 ♂, 92 ♀, 15. VI—29. VIII.
- Eupteryx atropunctata* (Gz., 1778). In various habitats: in herb layer of woods, in damp meadows, potato fields, etc., 28 loc., 37 ♂, 54 ♀, 2 N, 9. VI—27. VIII.
- Eupteryx aurata* (L., 1758). In herb layer of woods and shrubs, 27 loc., 40 ♂, 35 ♀, 13. VI—22. VIII.
- Eupteryx origani* Zv., 1948. In meadows, on field edges, etc., 11 loc., 12 ♂, 14 ♀, 12. VI—28. VIII.
- Eupteryx signatipennis* (Bh., 1847). La: Spiricini, in shrub, 29. VIII 1968, 1 ♀.
- Eupteryx tenella* (Fn., 1806). In light woods, 15 loc., 5 ♂, 21 ♀, 13. VI—23. VIII.
- Eupteryx urticae* (F., 1803). On nettles, 11 loc., 19 ♂, 13 ♀, 17. VI—29. VIII.
- Eupteryx cyclops* Mm., 1906. On nettles, 46 loc., 84 ♂, 115 ♀, 12. VI—29. VIII.
- Eupteryx calcarata* Oss., 1936. On nettles, 8 loc., 35 ♂, 38 ♀, 16. VI—29. VIII.
- Eupteryx stachydearum* (Hdy., 1850). In deciduous forests, 25 loc., 13 ♂, 18 ♀, 15. VI—27. VIII.
- Eupteryx collina* (Fl., 1861). La: Olinkalns, spruce forest, 6. VII 1964, 1 ♀; Dunava, dry meadow, 6. VII 1969, 1 ♀; Li: Veisiejai Lake, coastal area, 15. VII 1966, 1 ♂, 2 ♀; Asveja Lake, dry hill-slope, 15. VIII 1968, 2 ♂, 2 ♀.
- Linnavuoriana sexmaculata* (Hdy., 1850). On willows, 14 loc., 24 ♂, 19 ♀, 14.—30. VIII.
- Linnavuoriana decempunctata* (Fn., 1806) ssp. *intercedens* Lx., 195. La: Kandava, on alders, 18. VIII 1967, 1 ♂.
- Typhlocyba quercus* (F., 1777). On deciduous trees (mainly on oaks, but also on elms and willows), 15 loc., 13 ♂, 21 ♀, 1 N, 30. VI—22. VIII.
- Typhlocyba bifasciata* (Bh., 1851). La: Vilgale Lake, on alms, 19. VIII 1967, 1 ♀; Cesvaine, park, 27. VIII 1968, 1 ♀; Li: Daugai, 12. VII 1968, 1 ♂.
- Fagocyba cruenta* (H.-S., 1838). La: Turna, Kukru Lake, on trees, 2. VII 1969, 1 ♂; Li: Daugai, deciduous forest, 12. VII 1966, 3 ♂, 1 ♀; Alytus, *Carpinus* forest, 22. VIII 1967, 1 ♂, 6 ♀.
- Fagocyba carri* (Edw., 1914). La: Kandava, on oaks, 18. VIII 1968, 2 ♂, 11 ♀; Li: Alvitai, on oaks, 22. VIII 1967, 5 ♂, 5 ♀; Ramygala, on hazel trees, 13. VIII 1968, 1 ♂; Paneriai, on trees, 14. VIII 1968, 1 ♂, 4 ♀.
- Edwardsiana avellanæ* (Edw., 1888). Li: Ramygala, on hazel tree, 13. VIII 1968, 2 ♂, 5 ♀.

Edwardsiana staminata (Rb., 1931). **Li:** Aukštadvaris, on trees, 14. VIII 1968, 1 ♂, 4 ♀.

Edwardsiana rosae (L., 1758). Not found during this investigation.

Edwardsiana salicicola (Edw., 1885). On willows. **La:** Ica, 29. VI 1964, 1 ♂, 1 ♀; Sigulda, 4. VII 1969, 1 ♂, 2 ♀; Berzgaile, 8. VII 1969, 1 ♂, 1 ♀; **Li:** Alvitas, 22. VIII 1964, 3 ♂; Talačkoniai, 24. VIII 1967, 4 ♂, 5 ♀; Aukštadvaris, 14. VIII 1968, 2 ♂, 3 ♀.

Edwardsiana alnicola (Edw., 1924). On alders. **La:** Eleja, 20. VI 1968, 1 ♂; Kračienc, 3. VII 1969, 1 ♂; Cesis, 3. VII 1969, 1 ♂ (A. V.); Sventes Lake, 6. VII 1969, 1 ♂, 2 ♀ (A. V.).

Edwardsiana ampliata (Wg., 1948). **La:** Drabeši, oak forest, 4. VII 1969, 1 ♂, 1 ♀.

Edwardsiana soror (Lv., 1950). On deciduous trees (mainly on alders, but also on oaks, willows, etc.), 26 loc., 64 ♂, 75 ♀, 5 N, 18. VI — 26. VIII.

Edwardsiana prunicola (Edw., 1914). **Li:** Lepgiriai, 17. VI 1968, 1 ♂; Saudininkai, 19. VI 1968, 1 ♂.

Edwardsiana barbata (Rb., 1931). **La:** Gostini, on trees, 28. VIII 1968, 1 ♂.

Edwardsiana menzibieri Zv., 1948. On deciduous trees (alder, elm, willow, etc.), 16 loc., 52 ♂, 56 ♀, 16. VI — 27. VIII.

Edwardsiana gratiosa (Bh., 1852). **Li:** Nementšine, on trees, 14. VIII 1968, 1 ♀ (A. V.); Seiriai, on alder, 15. VIII 1968, 1 ♂; Stirniai, 15. VIII 1968, 1 ♂ (A. V.).

Edwardsiana geometrica (Schr., 1801). On alders, 24 loc., 34 ♂, 48 ♀, 30. VI — 26. VIII.

Edwardsiana candidula (Kb., 1868). **La:** Kraslava, on *Populus alba*, 2. VIII 1964, 7 ♂, 8 ♀, 1 N; **Li:** Aukštadvaris, on trees, 14. VIII 1968, 2 ♂, 3 ♀ (A. V.).

Edwardsiana plebeja (Edw., 1914). **La:** Vilgale, on elm trees and willows, 19. VIII 1967, 6 ♂, 48 ♀, 8 N; **Li:** Ramygala, on oaks, 13. VIII 1968, 1 ♂ (A. V.).

Edwardsiana flavescens (F., 1794) (= *E. fratercula* (Edw., 1908)). **Li:** Alytus, *Carpinus* forest, 22. VIII 1967, 6 ♂, 6 ♀.

Edwardsiana tersa (Edw., 1914). **Li:** Seredžius, on willows, 19. VI 1968, 1 ♂.

Edwardsiana bergmani (Tg., 1916). **La:** Turna, on trees, 2. VII 1969, 1 ♂ (A. V.); Ergeme, on alders, 2. VII 1969, 1 ♂ (A. V.); Kapessils, on trees, 9. VII 1969, 2 ♂ (A. V.).

Edwardsiana hippocastani (Edw., 1888). **Li:** Alvitas, on willows 22. VIII 1967, 1 ♂.

Eupterocyba jucunda (H.-S., 1837). **Li:** Seiriai, on alders, 15. VII 1966, 1 ♂; Stirniai, on trees, 15. VIII 1968, 1 ♀ (A. V.).

Ribautiana ulmi (L., 1758). On elms, but also found on limes, alders and willows, 6 loc., 44 ♂, 55 ♀, 18. VI — 27. VIII.

Ainetoidia alneti (Db., 1850). Mostly on alders, but also on other deciduous trees (willows, limes, hazels, oaks, etc.), 67 loc., 236 ♂, 591 ♀, 18. VI — 30. VIII.

Arboridia parvula (Bh., 1845). On various deciduous trees, but also in herb layer of fens and moist meadows, 16 loc., 13 ♂, 22 ♀, 14. VI — 30. VIII.

Arboridia ribauti (Oss., 1937). **La:** Ergli, meadow, 5. VII 1969, 1 ♀; **Li:** Ramygala, on hazels, 13. VIII 1968, 1 ♀; Paneriai, deciduous forest, 10. VII 1966, 1 ♀.

Arboridia erecta (Rb., 1931). Only the finds of Flor (cf. Vilbaste, 1973).

Arboridia velata (Rb., 1952). **Li:** Paneriai, on trees, 14. VIII 1968, 1 ♂, 2 ♀ (A. V.).

Flammigeroidia flammigera (Fc., 1785). On deciduous trees, 9 loc., 4 ♂, 11 ♀, 13. — 22. VIII.

Flammigeroidia tiliac (Fn., 1806). On deciduous trees, 6 loc., 3 ♂, 5 ♀, 13. — 29. VIII.

Flammigeroidia suavis (Ry., 1891). On deciduous trees, 15 loc., 17 ♂, 15 ♀; 13. — 30. VIII.

Flammigeroidia ordinaria (Rb., 1936). **La:** Mežaine, fen, 20. VIII, 1967, 2 ♂, 1 ♀; Jumurda, fen, 21. VI 1967, 1 ♀; **Li:** Buda, fen, 13. VIII 1962, 2 ♂, 4 ♀ (A. V.).

- Flammigeroidia roseipennis* (Fl., 1851). **La:** Mežaine, fen, 20. VIII 1967, 1 ♂.
- Flammigeroidia rubrovittata* (L., 1869). On heather. **La:** Silovka Lake, 3. VII 1964, 1 ♂; Gostini, 27. VIII 1968, 1 ♀ (A. V.); Taurekalne, 29. VIII 1968, 5 ♀; **Li:** Nemenčine, 14. VIII 1968, 2 ♂ (A. V.).
- Hypericiella hyperici* (H.-S., 1836). On sandy hill-slopes, light pine forests. Lives on *Hypericum perforatum*, 11 loc., 31 ♂, 42 ♀, 13. VI — 14. VIII.
- Zyginidia mocsaryi* (Hv., 1910). **La:** Plintini, in forest, 18. VIII 1967, 1 ♀ (E. R.). Lives on *Sesleria coerulea*.
- Zyginidia viadensis* (Wgn., 1941). In sandy places (on dunes, in pine forests, etc.) where it lives on *Koeleria glauca*. **La:** Piedruja, 19. VI 1967, 103 ♂, 70 ♀; Kraslava, 19. VI 1967, 5 ♂, 16 ♀; **Li:** Andriņšis, 6. VII 1966, 2 ♀; 7. VII 1966, 2 ♂, 10 ♀.
- Doratura stylata* (Bh., 1847). In meadows (dry and moist), fens, dry pine and birch forests, etc., 105 loc., 474 ♂, 528 ♀ (18 ♀ f. *macr.*), 353 N, 14. VI — 29. VIII.
- Doratura exilis* Hv., 1903. In dry meadows on sandy soils, 14 loc., 101 ♂, 84 ♀, 91 N, 18. VI — 23. VIII.
- Doratura homophyla* (Fl., 1861). In dry meadows, mainly on sandy soils, 48 loc., 206 ♂, 154 ♀ (9 ♀ f. *macr.*), 241 N, 13. VI — 27. VIII.
- Doratura impudica* Hv., 1897. On sand dunes, in dry meadows, in young pine forests, etc., 10 loc., 34 ♂, 37 ♀ (2 ♀ f. *macr.*), 6 N, 3. VII — 17. VIII.
- Mocuellus collinus* (Bh., 1850). In dry meadows, in dry pine forests, on sand dunes, etc., 51 loc., 268 ♂, 301 ♀ (8 ♂, 24 ♀ f. *macr.*), 131 N, 13. VI — 29. VIII.
- Erzaleus meirius* (Fl., 1861). **La:** Malupe, meadow on the river bank, 27. VII 1968, 2 ♀; Birzi, on the bank of a brook, 28. VIII 1968, 1 ♀.
- Sorhoanus assimilis* (Fn., 1806). In moist meadows, in fens, 14 loc., 70 ♂, 154 ♀, 30 N, 5. VII — 28. VIII.
- Sorhoanus xanthoneurus* (Fb., 1869). In raised peat bogs, in fens, 7 loc., 14 ♂, 27 ♀, 17 N, 7. VII — 25. VIII.
- Arthaldeus pascuellus* (Fn., 1826). In damp meadows, in fens, also on margins of swampy woods, etc., 68 loc., 304 ♂, 544 ♀, 48 N, 5. VII — 30. VIII.
- Arthaldeus strifrons* (Kb., 1868). In meadows, in fens, 34 loc., 66 ♂, 28 ♀, 42 N, 6. VII — 29. VIII.
- Verdanus abdominalis* (F., 1803). In dry and moist meadows, in fens, in shrubs, on sand dunes, etc., 145 loc., 774 ♂, 586 ♀, 320 N (among them 10 ♂, 14 ♀ f. *rufus* J. Sb.), 9. VI — 29. VIII.
- Diplocolenus bohemani* (Zs., 1840). In dry meadows, on sand dunes, 19 loc., 31 ♂, 29 ♀, 25 N, 14. VI — 27. VIII.
- Arocephalus languidus* (Fl., 1861). **La:** Kuldiga, dry meadows, 12.—13. VI 1968, 57 ♂, 26 ♀, 8 N; **Li:** Ariogala, dry meadow, 18. VI 1968, 9 ♂, 4 ♀.
- Arocephalus punctum* (Fl., 1861). In dry meadows, but also in fens, 14 loc., 17 ♂, 79 ♀, 5 N, 18. VI — 29. VIII.
- Pinumius areatus* (St., 1858). **La:** Saule, sand dunes, 4. VII 1966; 1 ♂; Silezers, sand area, 13. VI 1966, 1 ♂ (K. E.); Piedruja, *Koeleria* patch, 19. VI 1967, 3 ♂; Dunava, sandy bank of Daugava River, 6. VII 1969, 10 ♂, 5 ♀, 1 N; **Li:** Pabrade, dry meadow, 9. VII 1966, 1 ♀.
- Adarrus multinotatus* (Bh., 1847). **La:** Olinkalns, felled wood area, 6. VII 1964, 1 ♂; Kandava, margin of spruce forest, 18. VIII 1967, 1 ♂, 1 ♀.
- Turrutus socialis* (Fl., 1861). In dry meadows, on sand dunes, in young pine forests, etc., 76 loc., 514 ♂, 442 ♀, 6 ♀ f. *macr.*), 286 N, 12. VI — 39. VIII.
- Errastunus ocellaris* (Fn., 1806). In dry meadows, on field margins, but also in forests, rarely in marshland, 34 loc., 133 ♂, 180 ♀, 47 N, 13. VI — 30. VIII.
- Jassargus distinguendus* (Fl., 1861). In dry meadows, on field margins, sandy river banks, etc., 23 loc., 205 ♂, 186 ♀, 74 N, 4. VII — 28. VIII.
- Jassargus flori* (Fb., 1869). In young pine forests, in juniper stands, 14 loc., 24 ♂, 22 ♀, 8. VII — 23. VIII.

Jassargus repletus (Fb., 1869). La: Saule, sand dunes, 17. VIII 1967, 1 ♂; 12. VIII 1968, 4 ♂, 1 ♀; Bebrini, dry meadow, 8. VII 1964, 1 ♂.

Jassargus neglectus (Th., 1896). In woods, especially in felled areas, 14 loc., 46 ♂, 52 ♀ (1 ♀ f. *macr.*), 1 N, 4. VII—29. VIII.

Jassargus sursumflexus (Th., 1902). La: Saule, small fen, 17. VIII 1967, 1 ♂; Kandava, spring fen, 18. VIII 1967, 8 ♂, 9 ♀; Mežaine (Grini), fen, 20. VIII 1967, 18 ♂, 12 ♀; Vireši, pine forest, 26. VIII 1968, 1 ♂, 2 ♀ (A. V.); Gostine, *Molinia* patch on sandy soil, 27. VIII 1968, 2 ♀.

Jassargus allobrogicus (Rb., 1936). La: Pace, pine forest, 18. VIII 1967, 90 ♂, 122 ♀; Alsunga, felled area in pine forest, 14. VI 1968, 3 ♂, 1 ♀, 1 N; Li: Klaipeda, dry pine forest, 21. VIII 1967, 3 ♂, 8 ♀.

Deltocephalus pulicaris (Fn., 1806). In various habitats (dry and moist meadows, pasturages, wood margins, fields, etc.), 86 loc., 502 ♂, 472 ♀, 132 N, 13. VI—29. VIII.

Psammotettix cephalotes (H.-S., 1834). In various meadows, fens, margins of woods, etc., 63 loc., 524 ♂, 594 ♀, 165 N, 13. VI—30. VIII.

Psammotettix makarovi Mr., 1952. La: Saule, sand dunes, on *Calamagrostis epigeios*, 4. VII 1966, 1 N; 17. VIII 1967, 1 ♂, 6 ♀; Bebrini, dry meadows, 8. VII 1964, 3 ♂. Previously known from Moscow district, only.

Psammotettix pallidinervis (Db., 1850). In dry meadows, on sand dunes, in dry pine forests on sandy soil, clear cut areas, 13 loc., 56 ♂, 73 ♀, 22 N, 19. VI—12. VII.

Psammotettix koeleriae Zv., 1948. La: Piedruja, sand dunes, in *Koeleria* meadow, 18. VI 1962, 62 ♂, 71 ♀, 14 N; 14. VI 1966, 14 ♂, 5 ♀ (K. E.); Li: Andrioniškis, sand area, 7. VIII 1966, 1 ♀.

Psammotettix exilis (Wg., 1941). In dry meadows, sand areas, dry forest margins, etc., 6 loc., 53 ♂, 70 ♀, 4 N, 20. VI—23. VIII.

Psammotettix nodosus (Rb., 1925). In dry meadows, on dry hill-slopes, in juniper stands, etc., 10 loc., 113 ♂, 83 ♀, 14 N, 14. VI—22. VIII.

Psammotettix alienus (Db., 1854). In dry meadows, in fields, dry wood margins, clear cut areas, etc., 35 loc., 65 ♂, 78 ♀, 9 N, 17. VI—30. VIII.

Psammotettix confinis (Db., 1850). In various meadows, fens, high peat bogs, on river banks, lake and sea shores, in fields, on wood margins, woodland clearings, etc., 157 loc., 1381 ♂, 1707 ♀, 506 N, 9. VI—30. VIII.

Psammotettix sabulicola (Ct., 1837). La: Saulkrasti, on coastal sand dunes, on *Elymus*, 19. VII 1966, 3 ♂, 1 ♀; 25. VIII 1967, 2 ♂, 1 ♀; Li: Palarga, coastal dunes, on *Elymus*, 19. VI 1965, 1 ♀; Nida, coastal dunes, 21. VIII 1967, 3 ♀.

Psammotettix poecilus (Fl., 1861). On sandy areas: dunes, dry meadows, woodland clearings, 16 loc., 34 ♂, 25 ♀, 13 N, 13. VI—23. VIII.

Metalimnus formosus (Bh., 1845). In fens, in moist meadows, on lake shores and river banks, 9 loc., 26 ♂, 61 ♀, 11 N, 6. VII—29. VIII.

Metalimnus marmoratus (Fl., 1861). In fens, 9 loc., 18 ♂, 24 ♀, 1 N, 7. VII—25. VIII.

Piatymetopius undatus (DG., 1773). On deciduous trees and shrubs, 13 loc., 13 ♂, 11 ♀, 1 N, 6. VII—29. VIII.

Coryphaeus gyllenhalii (Fn., 1826). La: Lubana Lake, water meadow, on *Scirpus*, 29. VI 1964, 11 ♂, 1 ♀ (K. E.); Plintini, on *Scirpus*, 16. VI 1965, 24 N; Durbe Lake, on the shore, 14. VI 1968, 1 N; Li: Veisiejai, on the shore of Teiraus Lake, 14. VII 1966, 5 ♂, 20 ♀.

Grypotes puncticollis (H.-S., 1834). On pines, 10 loc., 5 ♂, 9 ♀, 4 N, 12.—22. VIII.

Neoliturus fenestratus (H.-S., 1834). In dry sandy places, 10 loc., 23 ♂, 28 ♀, 1 N, 7. VII—23. VIII.

Neoliturus guttulatus (Kbm., 1868). In dry sandy places, 11 loc., 30 ♂, 34 ♀, 4 N (15. V), 4. VII—23. VIII.

Allygus mixtus (F., 1794). In light forests, 9 loc., 4 ♂, 7 ♀, 2 N, 5. VII—27. VIII.

Alygus commutatus (Fb., 1872). In forests, 32 loc., 6 ♂, 18 ♀, 26 N, 30.VI — 18.VIII.

Graphocraerus ventralis (Fn., 1806). In dry meadows, on margins of roads, in dry fields and on field margins, sand areas, margins of woods, etc., 102 loc., 235 ♂, 144 ♀, 172 N, 12.VI — 22.VIII.

Stictocoris picturatus (C. Sb., 1842). **La:** Daugavpils, on the slope of the valley of Daugava River, 1.VII 1964, 1 ♂; **Li:** Pabrade, dry meadow, 9.VII 1966, 1 ♀.

Speudolettix subfuscus (Fn., 1806). In various forests, 65 loc., 40 ♂, 80 ♀, 19 N, 14.V — 23.VIII.

Pithyotettix abietinus (Fn., 1806). In spruce forests, on spruces, 7 loc., 3 ♂, 5 ♀, 6 N, 15.VI — 5.VII.

Hesium domino (Rt., 1880). In dry meadows, on wood margins, on sand dunes, sometimes also on trees and shrubs (especially in the autumn), 24 loc., 13 ♂, 38 ♀, 3 N, 30.VI — 28.VIII.

Hardya tenuis (Grm., 1821). **Li:** Merkine, young pine forest, 14.VII 1966, 1 ♂.

Hardya signifer (Th., 1897). **Li:** Varena, sand area, 23.VIII 1967, 2 ♂, 1 ♀; Merkine, sand area, 14.VII 1966, 1 ♂, 1 N.

Scleroracus corniculus (Mrs., 1866). **La:** Rezekne, small raised peat bog, 30.VI 1964, 1 ♂ (K. E.); Olinkalns, felled forest area, 6.VII 1964, 3 ♂; **Li:** Ignalino, felled forest area, 7.VII 1966, 1 ♀; Valkininkiai, juniper stand, 23.VIII 1967, 2 ♀.

Scleroracus plutonius (Uhl., 1877). **Li:** Veisiejai, dry hill-slope, 15.VII 1966, 3 ♂, 3 ♀.

Scleroracus decumanus (Kk., 1948). In dry meadows, in light pine forests, 8 loc., 6 ♂, 10 ♀, 5 N, 2.VII — 18.VIII.

Scleroracus russcolus (Fn., 1826). In raised peat bogs, 7 loc., 9 ♂, 19 ♀, 5 N, 30.VI — 29.VIII.

Scleroracus transversus (Fn., 1826). In dry meadows, on dry hill-slopes, in juniper stands, etc., 12 loc., 7 ♂, 49 ♀, 3 N, 30.VI — 23.VIII.

Ophiolix paludosus (Bh., 1845). Found only by Flor (*Jassus* (*J.*) *pinetellus*, (cf. Vilbaste, 1973).

Limotettix striolus (Fn., 1806). In moist meadows, fens, raised peat bogs, on lake shores and river banks, etc., 21 loc., 93 ♂, 103 ♀, 3 N, 22.VI — 22.VIII.

Limotettix atricapillus (Bh., 1845). **Li:** Aišetas Lake, fen, 7.VII 1966, 1 ♂, 1 ♀; Ilgininkiai, fen, 13.VI 1966, 10 ♂; Zuvintas Lake, fen, 15.VII 1966, 1 ♂; Stirniai, fen, 15.VIII 1968, 2 ♀.

Limotettix sphagneticus Em., 1966. **Li:** Ilgininkiai, fen, 13.VII 1966, 11 ♂, 22 ♀; Merkine, 13.VII 1964, 1 ♂ (K. E.); Veisiejai, fen, 14.VII 1966, 3 ♂, 1 ♀; Buda, fen, 13.VIII 1968, 2 ♀; Paluze, fen, 15.VIII 1968, 5 ♀; Stirniai, fen, 15.VIII 1968, 6 ♀.

Limotettix ochrifrons Vb., 1973. **Li:** Ilgininkiai, fen, 13.VII 1966, 27 ♂, 14 ♀.

Cicadula quadrinotata (F., 1794). In moist meadows, in fens and raised peat bogs, on lake shores and in moist forests, 107 loc., 427 ♂, 374 ♀, 389 N, 16.VI — 28.VIII.

Cicadula persimilis (Edw., 1920). In meadows (dry and moist), 13 loc., 27 ♂, 44 ♀, 22 N, 19.VII — 29.VIII.

Cicadula longiventris (J. Sb., 1871). **La:** Sauli, small fen between sand dunes, 17.VIII 1967, 1 ♂; **Li:** Aukštadvaris, fen, 14.VIII 1968, 2 ♂, 1 ♀, 3 N.

Cicadula quinquenotata (Bh., 1845). **La:** Burtnieku Lake, fen, 25.VIII 1967, 97 ♂, 79 ♀; Silini, fen, 28.VIII 1968, 3 ♀.

Cicadula nigricornis (J. Sb., 1871). In fens and moist meadows, 9 loc., 37 ♂, 67 ♀, 25 N, 27.VII — 29.VIII.

Cicadula saturata (Edw., 1915). In moist meadows, in woodland clearings, etc., 7 loc., 20 ♂, 17 ♀, 14. — 29.VIII.

Cicadula albingensis Wg., 1940. **Li:** Ramygala, deciduous forest, 13.VIII 1968, 1 ♂, 1 ♀.

Cicadula ornata (Ml., 1900). **La:** Valka, on *Carices*, 8.VII 1964, 1 ♂ (K. E.); Apriki, 20.VIII 1967, 1 ♀; Spiricini, moist meadow on river bank, 29.VIII 1968, 1 ♂, 4 ♀.

Colladonus torneellus (Zs., 1828). **La:** Mordanga, mixed forest, 17. VI 1965, 1 ♀, Sigulda, 14. V 1968 (K. E.); Krimulda, deciduous forest, 15. V 1968 (K. E.); Karli, forest margin, 12. VI 1968, 1 ♀.

Paluda preysleri (H.-S., 1838). In dry meadows, dry birch forests, in sandy felled forest areas, 17 loc., 23 ♂, 34 ♀, 3 N, 4. VII — 30. VIII.

Paluda adumbrata (C. Sb., 1842). In damp meadows, in fens, 11 loc., 10 ♂, 19 ♀, 1 N, 15. VII — 28. VIII.

Paluda vitripennis (Fl., 1861). In dry and damp meadows, in fens, also in sand; areas, 14 loc., 11 ♂, 34 ♀ (14. VI), 17. — 30. VIII.

Paluda flaveola (Bh., 1845). In various habitats: in dry meadows, but also on moorland, 10 loc., 6 ♂, 23 ♀, 19. VI — 29. VIII.

Elymana sulphurella (Zs., 1828). In all kinds of meadows, rarely in forests, 112 loc., 201 ♂, 486 ♀, 314 N, 5. VII — 30. VIII.

Elymana ikumae (Mm., 1911). In woods and shrubs, but also in sand areas, 29 loc., 38 ♂, 162 ♀, 12. — 30. VIII.

Cosmotettix caudatus (Fl., 1861). **La:** Pace, on shore of a lake, 18. VIII 1967, 1 ♂, 1 ♀; Plintini, marshy place in forest, 16. VIII 1967, 1 ♂, 1 ♀; Sventes Lake, water meadow, 6. VII 1969, 1 ♂, 2 N.

Cosmotettix panzeri (Fl., 1861). **Li:** Labanoras, small raised peat bog, 7. VII 1966, 2 ♂.

Cosmotettix costalis (Fn., 1826). In damp meadows and fens, 8 loc., 2 ♂, 18 ♀, 20. VI — 29. VIII.

Cosmotettix aurantiacus (Fr., 1859). **Li:** Seiriai, damp meadow, 15. VII 1966, 5 ♂, 1 ♀.

Doliotettix lunulatus (Zs., 1840). In damp meadows, in clover fields, etc., 22 loc., 9 ♂, 32 ♀, 1 N, 13. VI — 12. VIII.

Idiocerus cruentatus (Pz., 1799). In shrubs, also in meadows, 20 loc., 39 ♂, 62 ♀, 9 N, 9. VII — 29. VIII.

Lamprotettix nitidulus (F., 1794). **La:** Apriki, birch forest, 20. VIII 1967, 2 ♀; **Li:** Pīrcūpis, alder forest, 11. VII 1966, 1 ♂; Meteliai, alder forest, 19. VII 1966, 1 ♂, Piniava, shrub, 13. VIII 1968, 1 ♂.

Thamnotettix confinis (Zs., 1828). In forests (deciduous and coniferous), 54 loc., 39 ♂, 53 ♀, 23 N, 15. VI — 20. VIII.

Macustus griseus (Zs., 1828). In marshy meadows and forests, 12 loc., 15 ♂, 27 ♀, 14. VI — 20. VIII.

Handianus flavovarius (H.-S., 1835). In dry meadows, 14 loc., (**La:** Sauli, Valmiera, Cesis, Malupe, Pededze, Turaida, Sigulda, Murianis, Baldone, Turna, Grote, Kuldīga, Renda; **Li:** Ariogala), 35 ♂, 59 ♀, 35 N, 13. VI — 26. VIII.

Athysanus argentiarius Mc., 1955. Mostly in damp meadows, but also in clover fields, etc., 39 loc., 21 ♂, 45 ♀, 13 N, 5. VII — 30. VIII.

Athysanus quadrum (Bh., 1845). In damp meadows, in fens, on shores of water bodies, 28 loc., 14 ♂, 19 ♀, 25 N, 6. VII — 27. VIII.

Streptanus sordidus (Zs., 1828). In damp meadows and forests, 14 loc., 27 ♂, 17 ♀ (among them 1 ♀ f. *macr.*), 2 N, 5. VII — 28. VIII.

Streptanus aemulans (Kb., 1868). In meadows, in clover fields, in forests, 7 loc., 13 ♂, 3 ♀, 5. VII — 22. VIII.

Streptanus confinis (Rt., 1880). **La:** Pace, pine forest, 18. VIII 1967, 20 ♂, 4 ♀; Apriki, birch forest, 20. VIII 1967, 1 ♂, 1 ♀; **Li:** Biržai, moist meadow, 5. VII 1966, 1 ♂, 1 ♀; Seiriai, moist meadow, 15. VII 1966, 1 ♂, 1 ♀; Ažuolu-Buda, moist alder forest, 16. VII 1966, 1 ♂.

Streptanus marginatus (Kb., 1858). In dry pine forests, rarely also in spruce forests, 50 loc., 72 ♂, 74 ♀, 25 N, 10. VI — 28. VIII.

Euscelidius schenkii (Kb., 1868). **La:** Daugavpils, slope of the valley of Daugava River, 4. VII 1964, 1 ♂; Riga, park, 23. VII 1970, 1 ♂ (L. Danka); **Li:** Vilnius, attracted by electrical lamp, 25. VII 1952, 2 ♂ (A. Kazlauskas).

Euscelis venosus (Kb., 1868). La: Plintini park meadow, 18. VIII 1967, 2 ♀ (one of them f. *macr.*).

Euscelis incisus (Kb., 1858). Three females found in Li: Valkininkiai, juniper stand, 11. VII 1966, belong apparently to this species.

Euscelis distinguendus (Kb., 1858). In dry meadows, 13 loc., 29 ♂, 29 ♀. 4 N, 7. VII — 30. VIII.

Conosanus obsoletus (Kb., 1858). In damp meadows, flooded areas, clover fields, 13 loc., 20 ♂, 22 ♀, 16. VII — 29. VIII.

Laburrus impictifrons (Bh., 1852). In dry meadows on sandy soils, 31 loc., 36 ♂, 60 ♀, 118 N, 6. VII — 30. VIII.

Balclutha punctata (F., 1775). Almost in all kind of habitats, 149 loc., 427 ♂, 875 ♀, 169 N, 14. V — 30. VIII.

Balclutha lineolata Hv., 1904. In forests and forest clearings, 9 loc., 9 ♂, 9 ♀, 7 N, 14. — 29. VIII (15. V).

Balclutha calamagrostis Oss., 1961. In sandy places where it lives on *Calamagrostis epigeios*, 38 loc., 242 ♂, 242 ♀, 72 N, 12. VI — 29. VIII.

Macrosteles sexnotatus (F., 1806). In moist meadows, moist forests and shrubs, 65 loc., 391 ♂, 401 ♀, 140 N, 12. VI — 29. VIII.

Macrosteles ossianilssoni Lb., 1954. In damp and dry meadows, fens, on lake shores, 19 loc., 575 ♂, 326 ♀, 11 N, 14. VI — 29. VIII.

Macrosteles cristatus (Rb., 1927). In meadows, 13 loc., 16 ♂, 9 ♀, 3 N, 15. VI — 28. VIII.

Macrosteles laevis (Rb., 1927). In moist and dry meadows, in fens, in fields, in sandy areas, on shores of water bodies, but also in forests, 104 loc., 880 ♂, 1024 ♀, 301 N, 10. VI — 30. VIII.

Macrosteles pygmaeus n. sp. A small, light-coloured species. Ground colour light ochraceous. Fore spots of crown are situated on the broadly rounded fore margin of head. They are large, black, slightly arched, somewhat less than twice as wide as long. Intermediate spots are light-brown or ochraceous and reach up to the small light-brown spot beside the eye (which continues also between the ocellus and the eye). Hind spots are small, black and are situated on the hind margin of the crown. Frons with narrow brown arch-lines of \pm equal width. They are connected with those on the opposite side in the upper part of frons and shortened and situated on the sides of the frons in the under part, so that in the middle of frons there is a large, triangular light patch. On the basis of anteclypeus there is a narrow brown cross band. The remainder of the face is light. Eyes grey or reddish.

Pronotum and scutellum — unicolourous, of ground colour. Fore wings of whitish ground colour, with unnoticeable veins. Hind wings somewhat milky, with slightly brownish veins. Legs light, with very weak brownish remains of longitudinal streaks and brownish points on tibiae. Underside of thorax slightly brownish in the middle.

Upper side of abdomen brownish with \pm narrow margins of segments. Under side predominantly light. Genital segment of male whitish. Pygofer of female slightly yellowish, ovipositor black-brown.

Male genitalia see Fig. 3 A-G; hind end of female abdomen Fig. 3 H.

Measurements in millimetres: Males (2): Length to the end of fore wing — 2.54—2.87; to the end of the abdomen — 1.90—2.60; length of the vertex — 0.18—0.25; width of the head — 0.79—0.86; width of the vertex — 0.39—0.41; length of the pronotum — 0.33—0.37; width of the pronotum — 0.76; length of the fore wing — 2.13—2.31; width of the fore wing — 0.62—0.67; length of the hind tibia — 1.24—1.42.

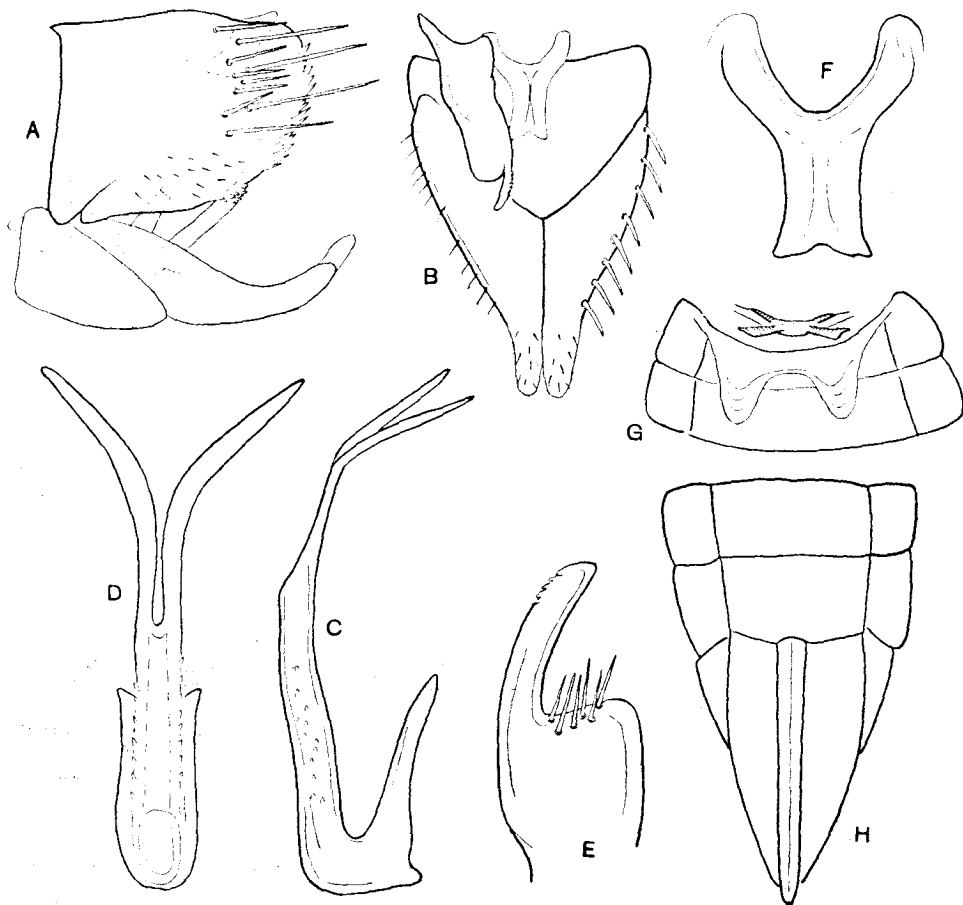


Fig. 3. *Macrosteles pygmaeus* n. sp. Genitalia: A — genital segment, lateral view (112 \times); B — genital valve and plates (112 \times); C — aedeagus, lateral view (250 \times); D — aedeagus, caudoventral view (250 \times); E — stylus (250 \times); F — connective (250 \times); G — apodemes (50 \times); H — tip of female abdomen (46 \times).

Female (1): length to the end of fore wings — 2.87; to the end of the abdomen — 2.95; length of the vertex — 0.26; width of the head — 0.89; width of the vertex — 0.45; length of the pronotum — 0.36; width of the pronotum — 0.79; length of the fore wing — 2.28; width of the fore wing — 0.69; length of the hind tibia — 1.52.

Holotype δ and allotype f : Lithuanian SSR, Labanoras, small raised peat bog, 3. VII 1966; 1 δ paratype — Antazave, dry hill-slope, 4. VII 1964.

Differs from the other species of the genus in its small size, reduced dark pattern of head and by male genitalia. These are similar to those of *M. sexnotatus* and *M. ossiannilssoni*, but the stem of aedeagus is somewhat S-formed (as in *M. laevis*) and the distal part of the apical appendages is \pm equal to the proximal part (much longer in *M. sexnotatus* and *M. ossiannilssoni*).

Macrosteles viridigriseus (Edw., 1922). In damp meadows, in fens, on shores of water bodies, 37 loc., 149 δ , 122 f , 19 N, 17. VI — 29. VIII.

Macrosteles lividus (Edw., 1894). Li: Merkine, on the bank of Nemunas River,

13. VI 1966, 1 ♂, 4 ♀; Veiseiai, on the shore of Teiraus Lake, 14. VII 1966, 1 ♂; Valkininkiai, damp meadow, 23. VIII 1967, 2 ♂, 1 ♀.

Macrosteles frontalis (Sc., 1875). On the shores of water bodies, lives on *Equisetum* species, 16 loc., 35 ♂, 18 ♀, 4 N, 9. VI — 29. VIII.

Macrosteles horvathi (Wg., 1935). In moist meadows, 9 loc., 26 ♂, 13 ♀, 2 N, 14. VI — 22. VIII.

Macrosteles septemnotatus (Fn., 1806). In marshy meadows and fens, 14 loc., 29 ♂, 41 ♀, 19 N, 20. VI — 28. VIII.

Macrosteles variatus (Fn., 1806). In forests, 13 loc., 8 ♂, 14 ♀, 12 N, 17. VII — 27. VIII.

Macrosteles oshanini Rv., 1957. Li: Antanava, fen, 6. VII 1966, 1 ♂, 1 ♀.

Macrosteles quadripunctulatus (Kb., 1868). In sandy places, 9 loc., 3 ♂, 11 ♀, 1. VII — 29. VIII.

Sonronius dahlbomi (Zs., 1840). La: Jumurda, fen, 21. VI 1967, 3 ♂, 9 N; Vestiene, in ditches, 21. VI 1967, 2 N; Nigeste, marshy meadow, 21. VI 1967, 1 N.

Sonronius binotatus (J. Sb., 1871). La: Saule, sand dunes, on *Chamaenerium angustifolium*, 4. VII 1966, 2 ♂, 3 ♀; Li: Nemenčine, on willows, 10. VII 1966, 8 ♂, 9 ♀, 7 N.

Sagatus punctifrons (Fn., 1826). On willows, 68 loc., 52 ♂, 150 ♀, 485 N, 19. VI — 25. VIII.

REFERENCES

- Fischer J. B., 1791. Versuch einer Naturgeschichte von Livland. 2. Aufl. Königsberg.
 Flor G., 1861. Die Rhynchoten Livlands. Zweiter Teil. *Rhynchota gulaerostria* Zett. (*Homoptera* Auct.) *Cicadina* und *Psylloidea*. Arch. Naturk. Liv-, Est- und Kurlands (2. Ser.) 4 : 1—638.
 Gimmerthal B. A., 1846. Zur Fauna der Ostseeprovinzen. Die Zikaden oder Zirpen. Corr.-Bl. Naturf. Ver. Riga 2(12) : 26—27.
 Vilbaste J., 1973. Revision of the collection of G. Flor. II. *Homoptera: Cicadinea: Cicadelloidea*. ENSV TA Toimet. Biol. 22 (1) : 15—28.
 Велце Д. К., Данка Л. Я., 1970. Каталог цикад (*Auchenorrhyncha*) Латвийской ССР. Zoologijas Muzeja Raksti 4 : 15—65.
 Вильбасте Ю., 1960. Ревизия коллекций Г. Флора I. *Homoptera: Cicadina: Fulgoroidea*. Изв. АН ЭССР. Биол. 9 (12) : 135—142.
 Сочава В. Б., Исаченко Г. И., Карпенко А. С., 1960. Зональное разделение Советской Прибалтики на основе среднемасштабной геоботанической карты. Ботан. ж. 45 (6) : 795—804.

Academy of Sciences of the Estonian SSR,
 Institute of Zoology and Botany

Received
 March 13, 1973

Juhan VILBASTE

LÄTI JA LEEDU TIRDILISTE ESIALGNE NIMESTIK

Resümee

Autori ja kolleegide-entomoloogide poolt kogutud materjalide (umbes 54 000 isendit) ja kirjanduses avaldatud andmete alusel tehti kindlaks 357 liiki, neist Lätist 320 ja Leedust 296. Ülevaade liikide levikust Baltimaade geobotaanilistes rajoonides on antud tabelis. Töö lõpul antakse iga liigi lühike ökoloogiline iseloomustus (liikidele, keda on leitud 5—6 leukohast, on lisatud täpsed levikuandmed), leukohtade ja kogutud isendite arv ning ajavahemik, mil liiki on leitud. Kirjeldatakse kahte teadusele uut liiki (*Anacertagallia lithuanica*, *Macrosteles pygmaeus*). On lisatud ka nende genitaalide joonised.

Eesti NSV Teaduste Akadeemia
 Zooloogia ja Botaanika Instituut

Toimetusse saabunud
 13. III 1973