

Swezeyia species from Papua New Guinea (Homoptera, Derbidae)*

Jan Van Stalle

Entomology Section, Koninklijk Belgisch Instituut voor Natuurwetenschappen, Vautierstraat 29, 1040
Brussels, Belgium

ABSTRACT: *Swezeyia papuana* (Muir) and *S.lalokensis* (Muir) are redescribed. *S.polyxo* Fennah and *S.lyricen* Kirkaldy are reported for the first time in New Guinea and *S.condorensis* sp.nov. and *S.pilosa* sp.nov. are newly described.

1. INTRODUCTION

The genus *Swezeyia* Kirkaldy, 1906 presently accommodates 27 taxa occurring in the Oriental and Australian region. Muir (1913) described *S.lalokensis* and *S.papuana* from Papua New Guinea, both only known from the female holotype. As the generic place of female *Swezeyia* and *Kuranda* species is difficult to estimate (Van Stalle, 1986) these are tentatively placed in *Swezeyia*.

The present paper is mainly based on a collection made by Dr J. Van Goethem and Dr P. Grootaert (Koninklijk Belgisch Instituut voor Natuurwetenschappen) in 1981 and 1982. This collection contains four species new to the fauna of New Guinea: *Swezeyia polyxo* Fennah, 1956 (Caroline islands) and *Swezeyia lyricen* Kirkaldy, 1906 (Fiji, Samoa) are recorded here for the first time; in addition two species are newly described: *S.condorensis* sp.nov. and *S.pilosa* sp.nov.

2. SYSTEMATIC ACCOUNT

***Swezeyia papuana* (Muir) (Figs 1-4)**

Phantasmatocera papuana Muir, 1913: 47.

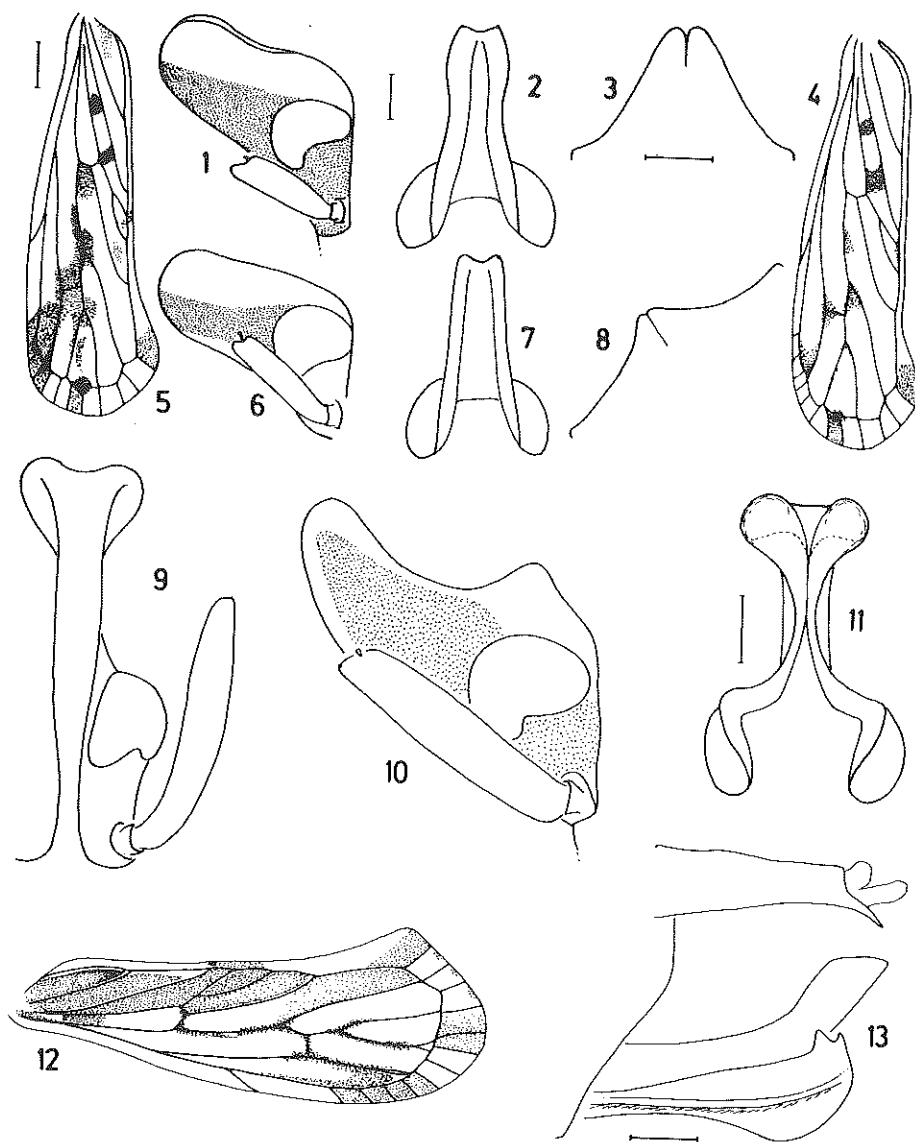
Phantasmatocera papuensis (sic) Muir, 1913:46.

Swezeyia papuana (Muir); Metcalf, 1945:154.

Material. Holotype ♀, Papua, Laloki, (BP Bishop Museum, Hawaii).

Male. Unknown.

* Leopold III Biological Station, Laing Island, contribution no. 92.



Figures 1-13. *Swezeyia* species. 1-4. *S. papuana* (Muir), holotype; 1. Head, in profile; 2. Head, dorsal view; 3. Pregenital sternite; 4. Left tegmen; 5-8. *S. lalokensis* (Muir), holotype; 5. Left tegmen; 6. Head, in profile; 7. Head, dorsal view; 8. Pregenital sternite; 9-13. *S. condorensis* sp. nov., holotype; 9. Head, in frontal view; 10. Head, in profile; 11. Head, dorsal view; 12. Left tegmen; 13. Male genitalia. Scale Figures 4, 5 and 12: 0.5 mm; others: 0.2 mm.

Female. Lower half of genae brown, extension anterior to eyes less than twice greatest width of an eye (1:1.6). Postclypeus brown, anteclypeus and rostrum pale ochreous. Lateral borders of vertex slightly sinuous (Figs 1 and 2). Pronotum with a brown streak laterally; mesonotum, legs and abdomen pale ochreous. Tegmina (Fig. 4) with brown colour marks as illustrated in Figure 4. Length 5 mm.

Pregenital sternite (Fig. 3) with a projection in middle divided by a linear incision.

***Swezeyia lalokensis* (Muir) (Figs 5-8)**

Phantasmatocera lalokensis Muir 1913:46.

Swezeyia lalokensis (Muir); Metcalf 1945: 153.

Material. Holotype ♀, Papua, Laloki, F. Muir 1909, (BP Bishop Museum Hawaii).

Male. Unknown.

Female. Genae with a brown streak (Fig. 6), extension anterior to eyes less than twice greatest width of an eye (1:1.6). Postclypeus and anteclypeus brown. Lateral borders of vertex slightly converging anteriorly. Antennae short (Fig. 6), flattened, ochreous. Pronotum and mesonotum whitish, the former with a brown streak. Tegmina with brown marks as illustrated in Figure 5. Abdomen ochreous ventrally, paler dorsally. Legs whitish. Body length: 3 mm; tegmina 4 mm.

Genitalia: pregenital sternite (Fig. 8), with a narrow projection in middle, divided by a linear incision.

***Swezeyia polyxo* Fennah**

Swezeyia polyxo Fennah 1956:146.

Material. 1 ♂, Papua New Guinea, Madang Prov., Laing I., 11.6.1978, leg. J. Van Goethem; 1 ♂, Laing I., 21.6.1982; leg. P. Grootaert. Previously recorded from the Caroline Islands.

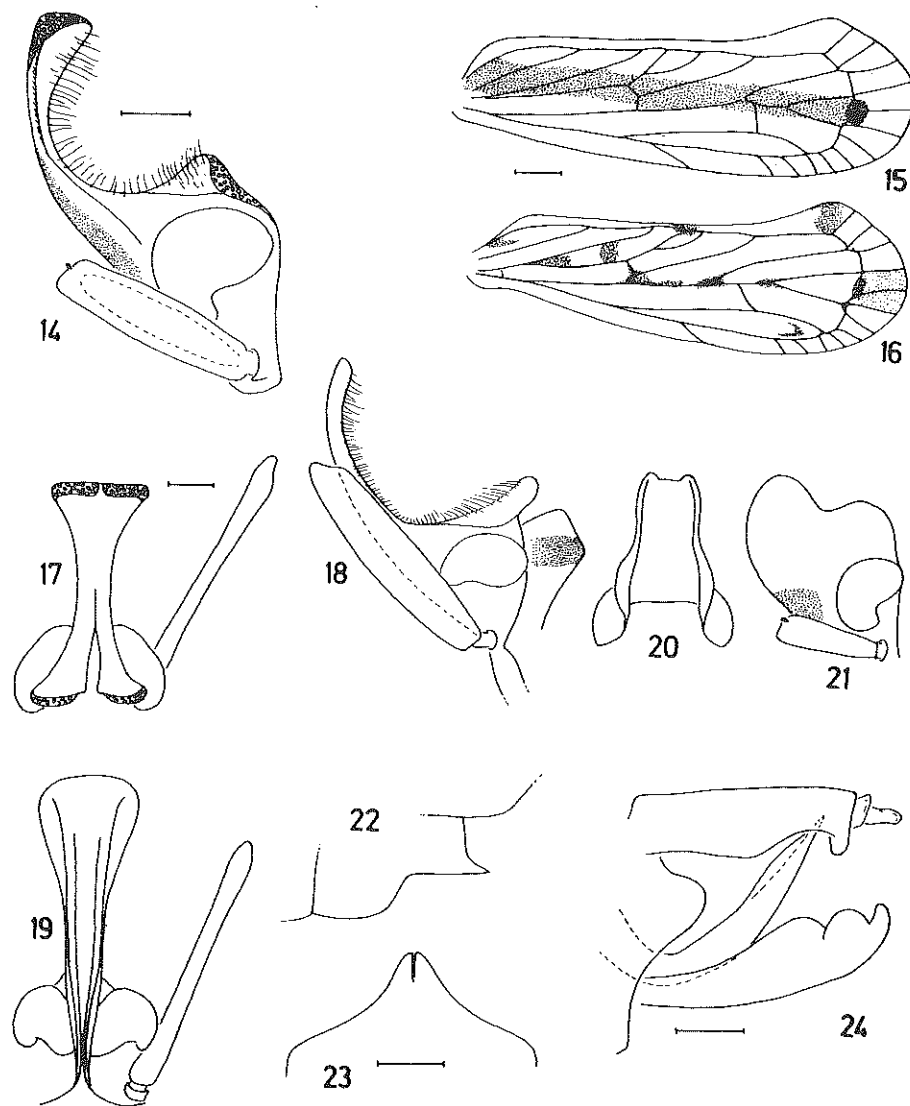
***Swezeyia condorensis* sp. nov. (Figs 9-13)**

Material. Holotype ♂, Papua New Guinea, Madang Prov., Condor Point, 17.5.1982, leg. P. Grootaert. Paratype: 1 ♂, Prov. Morobe, W.E.I., 1200 m, 20.6.1981, U.V. leg. J. Van Goethem.

Male. Borders of vertex strongly converging anterior to eyes and touching each other, covered with sensilla in the basal part until the point where the borders touch, and in the apical part as indicated by the dotted line in Figure 11. Antennae shorter than head. Genae, clypeus, antennae and ventral part of abdomen brown. Tegmina with brown marks as illustrated in Figure 12. Length: 4.5 mm.

Genitalia. Anal segment with two small apical lobes, blunt in caudal view. Aedeagus narrowly tubular, curved upward (Fig. 13).

Female. Unknown.



Figures 14-24. *Swezeyia* species. 14-15. *S.lyricen* Kirkaldy; 14. Head, in profile; 15. Left tegmen; 16-24. *S.pilosa* sp.nov.: 16. Left tegmen; 17. Male, head in dorsal view; 18. Male, head in profile; 19. Male, head in frontal view; 20. Female, head in dorsal view; 21. Female, head in profile; 22. Pregenital sternite, lateral view; 23. Pregenital sternite, ventral view; 24. Male genitalia. Scale Figures 15 and 16: 0.5 mm; others: 0.2 mm.

Diagnosis. *S.condorensis* sp.nov. closely resembles *S.zephyrus* Fennah, 1956 (Micronesia) in the shape of the vertex but in *S.condorensis* the head is longer and the basal part of the vertex is broader.

***Swezeyia lyricen* Kirkaldy (Figs 14-15)**

Swezeyia lyricen Kirkaldy, 1906:430.

Material. 9 ♂, 34 ♀, Papua New Guinea, Laing Island, Malaise trap, 30.8.1982, leg. P.Grootaert; 1 ♂, Sisimangum, 29.4.1982; 1 ♂, 1 ♀, Warawaranga, 11.6.1982, leg. P.Grootaert.

Remarks. The determination is tentative; the shape of the head (Fig. 14) and the description of the tegmina (Fig. 15) corresponds with the description and illustration in Kirkaldy (1906 and 1907).

***Swezeyia pilosa* sp.nov. (Figs 16-24)**

Material. Holotype ♂, Papua New Guinea, Wau, W.E.I., 22.5.1982, leg. P.Grootaert. Paratypes: 3 ♂, 3 ♀, same data as holotype, 22.5, 25.5.1982.

Male. Head strongly curved anterior to eyes, angle sometimes different due to dissection. Vertex covered with fine hairs all over its surface and sensilla along base and apex. General colour white, carinae of frons slightly fumated with brown in lower part; a brown spot laterally on pronotum and mesonotum forming a single streak; antennae almost as long as head, brown, flattened, totally covered with roundish sensilla. Tegmina hyaline, with brown spots as illustrated in Figure 16. Length: 5 mm. Male genitalia as illustrated in Figure 24.

Female. Head and antennae considerably smaller (Figs 20 and 21). Genitalia: Pregenital sternite projected caudally into a lobe divided in middle by a linear incision (Figs 22 and 23).

Diagnosis. Differs from other *Swezeyia* species in the larger size of the head.

ACKNOWLEDGEMENTS

The author wishes to thank Dr J.Van Goethem and Dr P.Grootaert for the privilege of studying this collection and Mr G.M.Nishida (B.P. Bishop Museum) for the loan of the holotype of *Swezeyia papuana* (Muir) and *Swezeyia lalokensis* (Muir).

REFERENCES

- Fennah, R.G. 1956. Homoptera: Fulgoroidea. *Insects of Micronesia* 6(3):41-221.
 Kirkaldy, G.W. 1906. Leafhoppers and their natural enemies (Pt IX Leafhoppers, Hemiptera). *Bull. Hawaiian Sug. Pls Ass. div. Ent.* 1(9):271-479.

- Muir, F. 1913. On some new species of leafhoppers. Part II. Derbidae. *Bull. Hawaiian Sug. Pls Ass. div. Ent.* 12:28-92.
- Van Stalle, J. 1986. The genus *Kuranda* Distant, 1907, with description of four new species from Papua New Guinea (Homoptera, Fulgoroidea, Derbidae). *Annls Soc. r. zool. Belg.* 116:31-39.