

Ann. Naturhist. Mus. Wien	88/89	B	535-539	Wien, November 1986
---------------------------	-------	---	---------	---------------------

Types of Flatidae (Homoptera) IV. Lectotype designations and taxonomic notes on species in the Vienna Museum

By JOHN T. MEDLER¹⁾

Manuskript eingelangt am 20. Dezember 1984

The type specimens of Flatidae in the Vienna Museum represent material studied by MELICHAR in connection with his monographic revision of the family published in 1901, 1902. I examined the types in connection with my research on the family in Southeast Asia and New Guinea. As most species of Flatidae are identified accurately by using diagnostic characters of the male genitalia, male specimens were dissected and illustrated whenever available. The dissected male was designated as the lectotype when syntypes existed.

The authenticity of the syntypes was verified by citations of data given in the original descriptions. The label data associated with each specimen were recorded precisely by the following format: numbers (1), (2), (3), etc., indicate the sequence of original labels on the pin from top to bottom. A slash (/) shows separation of the printed or written lines on each label. An exact reproduction of these data is given in the text that follows. Lastly, a red label with my hand printed lectotype or paralectotype designation has been attached to each specimen.

This research was made possible by the help of Dr. A. KALTENBACH, to whom I express grateful acknowledgement at this time.

albopunctulata MELICHAR, 1902, p. 104 (*Nephesa*)

Lectotype ♂ - (1) Java/1886 (2) *albopunctulata*/det. MELICHAR. (Dissected)

The genitalia of the lectotype are illustrated (Fig. 3) Paralectotypes are in the Brussels Museum (1 ♀) and the Copenhagen Museum (2 ♀ ♀).

centralis MELICHAR, 1902, p. 111 (*Colgar*)

Lectotype ♂ - (1) Morotai (2) Mus./Leyden/1866 (3) *centralis*/det. MELICHAR. (Dissected)

Paralectotype (no abdomen) - Same labels as the lectotype.

Paralectotype ♀ - (1) BERNSTEIN/Morotai (2) Mus./Leyden/1866 (3) *centralis*/det. MELICHAR.

The genitalia of the lectotype are illustrated (Fig. 1). Only 3 of the 4 syntypes from Morotai cited in the original description were found. (= *NEOMELICHARIA*).

conspurcata MELICHAR, 1902, p. 191 (*Atracis*)

Holotype ♀ - (1) MARKWOOD/Ceylon 86 (2) *conspurcata*/det. MELICHAR.

The holotype was illustrated by MELICHAR (pl. IX, fig. 9).

¹⁾ Anschrift des Verfassers: Dr. JOHN T. MEDLER, Honorary Associate, Bernice P. Bishop Museum, Honolulu, Hawaii, U.S.A.

depressa MELICHAR, 1901, p. 249 (*Flatoptera*)

Holotype ♀ – (1) F. BACZES/1886/Borneo (2) *depressa*/det. MELICHAR.

The tegmen of the holotype is illustrated (Fig. 9).

fuscmarginata MELICHAR, 1902, p. 78 (*Ormenis*)

Lectotype ♀ – (1) Sumatra/Deli/ex coll. FRUHSTORFER (2) *fuscmargin.*/det. MELICHAR.

The tegmen of the lectotype is illustrated (Fig. 8). A lectotype female is in the Berlin Museum. This species does not belong in *Melicharia* as given by the Metcalf Catalogue, 1957. It was correctly associated with *Anaya* by MELICHAR, 1923, according to the venation of the tegmen. (= ANAYA).

lurida MELICHAR, 1902, p. 197 (*Atracis*)

Lectotype ♀ – (1) BARON/WARSBERG/Java/1868 (2) *lurida*/det. MELICHAR.

Syntypes cited in the original description were not found in the Amsterdam or Stuttgart Museums. A study of the genitalia of a male that has been correctly associated with the female holotype will be required for a proper understanding of this species.

modesta MELICHAR, 1902, p. 122 (*Paratella*)

Syntype (no abdomen) – (1) Neu Seeland/coll. SIGNORET (2) *modesta*/det. SIGNORET (3) *modesta*/det. MELICHAR.

The two syntypes of *modesta* MELICHAR each represent a different genus. A lectotype in the Stockholm Museum has been designated to associate the name with an undescribed genus in the *Sephena* complex. The specimen in the Vienna Museum is the same species as *Poeciloptera unicolor* WALKER, which belongs to an undescribed genus in the *Melicharia* complex.

plicata MELICHAR, 1902, p. 28 (*Idume*)

Paralectotype ♀ – (1) PFEIFFER/Borneo (2) *plicata*/det. MELICHAR.

The lectotype male is in the Stockholm Museum.

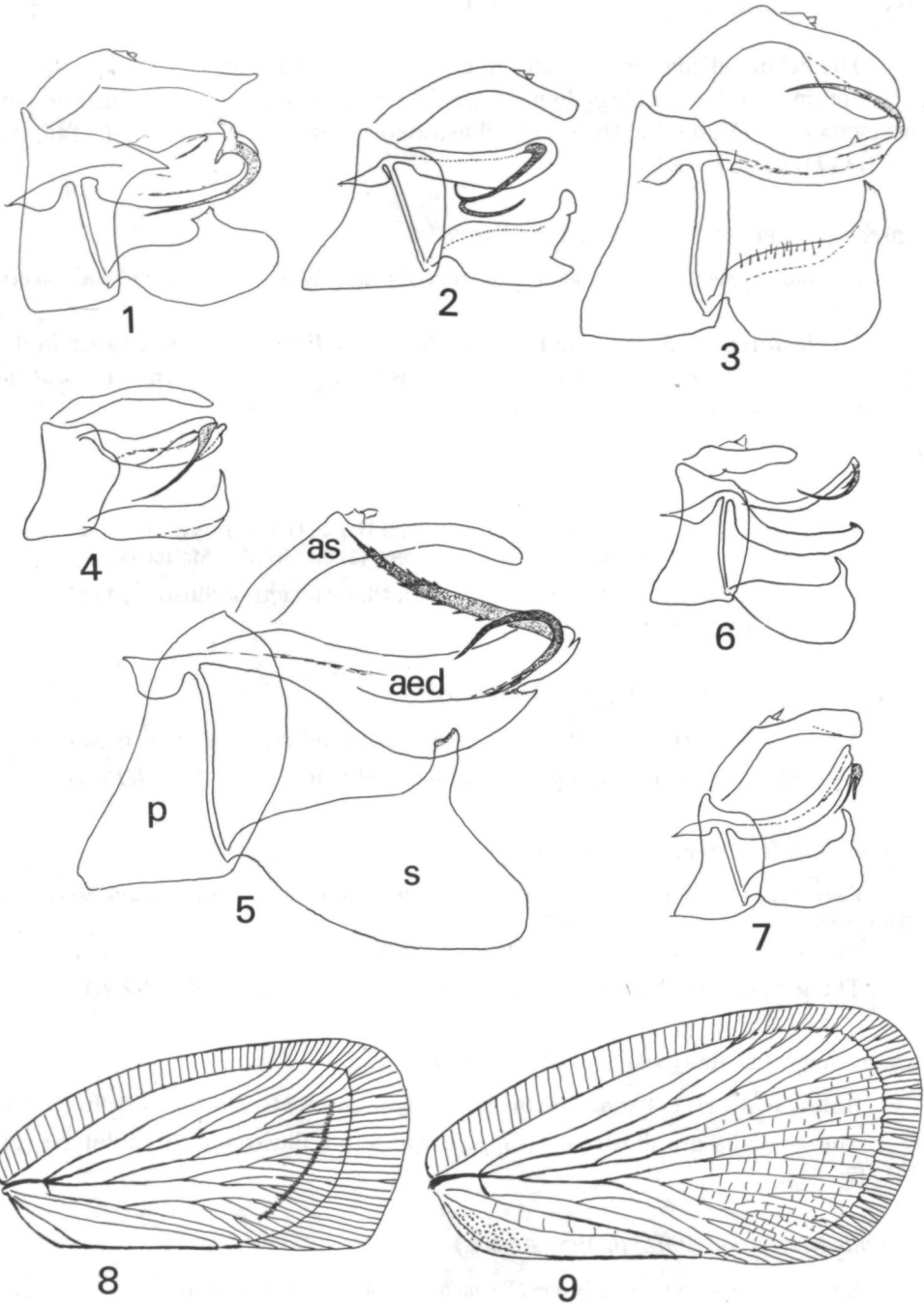
proxima MELICHAR, 1902, p. 83 (*Ormenis*)

Holotype ♀ – (1) FELDER/Ceylon/1861 (2) *proxima*/det. MELICHAR.

MELICHAR did not give the sex of the holotype in the original description. It will be necessary to associate a male with this species and study the genitalia to establish the correct status. (= ANAYA).

punctulata MELICHAR, 1902, p. 114 (*Colgar*)

Holotype ♀ – (1) Batjan/Aug.–Septbr/ex coll. H. FRUHSTORFER (2) *punctulata*/det. MELICHAR (3) *Atella/punctillata* (sic!).



Legends for Figures

Figures 1-7. Left lateral view of male genitalia. 1, *Colgar centralis* MELICHAR. 2, *Seliza squamosa* MELICHAR. 3, *Nephesa albopunctulata* MELICHAR. 4, *Atracis subtilis* MELICHAR. 5, *Scarpantina stigmatica* MELICHAR. 6, *Anaya tumida* MELICHAR. 7, *Seliza socotrina* MELICHAR. Figures 8-9. Right tegmen. 8, *Ormenis fuscomarginata* MELICHAR. 9, *Flatoptera depressa* MELICHAR.

aed = aedeagus, as = anal segment, p = pygofer, s = style.

The tegminal markings of the holotype concur with MELICHAR's published description, but the markings do not resemble those on the specimen illustrated by MELICHAR (pl. IV, fig. 7). The species illustrated appears to be *cruentata* FABRICIUS. (= *NEOMELICHARIA*).

roseoalba MELICHAR, 1902, p. 119 (*Paratella*)

Paralectotype ♀ – (1) Java/Coll. SIGNORET (2) *candida*/det. SIGNORET (3) *roseoalba*/det. MELICHAR.

The lectotype male is in the Budapest Museum. Paralectotypes also are in the Brussels and Genova Museums. The species is a junior synonym of *Paratella decolor* (WALKER).

simonyi MELICHAR, 1902, p. 139 (*Seliza*)

Lectotype ♀ – (1) Sokotra, 2.99/leg. O. SIMONY (2) Hagien Geb. (3) SIMONYI/det. MELICHAR.
Paralectotype ♀ – (1) Sokotra 2.99/leg. O SIMONYI (2) SIMONYI/det. MELICHAR.

The lectotype appears to be the specimen that MELICHAR illustrated (pl. VIII, fig. 21). (= *MOSIONA*).

socotrina MELICHAR, 1902, p. 137 (*Seliza*)

Lectotype ♂ – (1) Sokotra 2.99/leg. O. SIMONY (2) *socotrina*/det. MELICHAR. (Dissected)

The genitalia of the lectotype are illustrated (Fig. 7). (= *MOSIONA*).

squamosa MELICHAR, 1902, p. 140 (*Seliza*)

Lectotype ♂ – (1) Ras Shoab, Sokotra; 1. '99/0. SIMONY (2) *squamosa*/det. MELICHAR. (Dissected)

Paralectotypes 2♀ ♀ – Same labels as the lectotype.

The genitalia of the lectotype are illustrated (Fig. 2). (= *MOSIONA*).

stigmatica MELICHAR, 1901, p. 243 (*Scarpantina*)

Holotype ♂ – (1) F. BACZES/1886/Borneo (2) *stigmatica*/det. MELICHAR (Dissected)

The genitalia are illustrated (Fig. 5). MELICHAR illustrated the holotype (pl. III, fig. 11).

subtilis MELICHAR, 1902, p. 195 (*Atracis*)

Lectotype ♂ – (1) FELDER/Ceylon (2) *subtilis*/det. MELICHAR (Dissected)

Paralectotype ♀ – (1) FELDER/Ceylon (2) *subtilis*/det. MELICHAR (3) *Atracis*. This specimen lacks the head and pronotum.

The genitalia are illustrated (Fig. 4). The tegmina of the lectotype are damaged. The apical half of the left tegmen is broken off diagonally from the costal margin to the tip of the clavus. The right tegmen is lost from the tip of the clavus to near the costal angle. (= *GAJA*).

tumida MELICHAR, 1902, p. 72 (*Ormenis*)

Holotype ♂ – (1) N. Indien/Coll. SIGNORET (2) *tumida*/det. MELICHAR (Dissected)

The genitalia of the holotype are illustrated (Fig. 6). (= *ANAYA*).

References

- MELICHAR, L. (1901): Monographie der Acanaloniiden und Flatiden (Homoptera). – Ann. Nat. Hofmus. Wien **16**: 178–258.
- (1902): Monographie der Acanaloniiden und Flatiden (Homoptera) (Fortsetzung). – Ann. Nat. Hofmus. Wien **17**: 1–123, 9 pl.
- (1923): Homoptera, fam. Acanaloniidae, Flatidae et Ricaniidae. – Gen. Insect. **182**: 1–185, 2 pl.
- METCALF, Z. P. (1957): General Catalogue of the Homoptera, Fasc. IV, Part 13, Flatidae. – North Carolina State College, Raleigh, 565 pp.