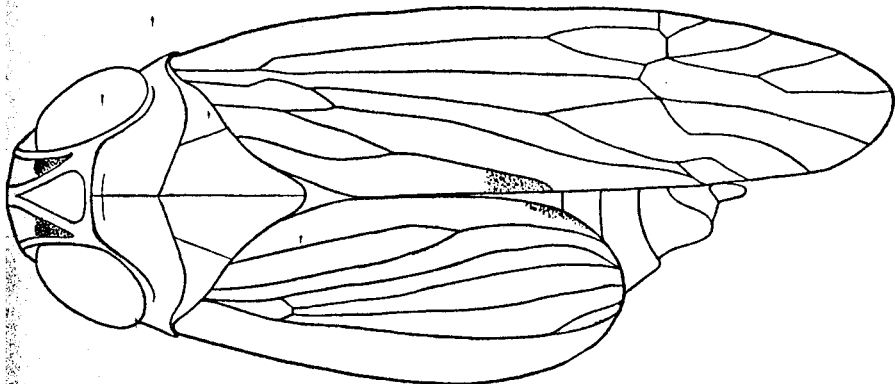


A RARE WING DEFORMITY IN
DELPHACINE FULGORIDS
(Homoptera-Fulgoridae-Delphacinae)

RAYMOND H. BEAMER
University of Kansas, Lawrence*

Numerous brachypterous specimens of *Delphacodes consimilis* (Van D.) were collected on the sedge, *Scirpus microcarpus* P. at Granite Dells, Arizona, July 3, 1950. A deformed specimen illustrated here was among those taken. Normally in brachypterous specimens the front wings extend slightly beyond the abdomen. In this specimen the right wing is normal while the left is shortened to just beyond the middle of the clavus. The number of longitudinal veins is the same in both wings; however the branching is distinctly not the same. In my experience with thousands of specimens in this group this type of deformity is definitely uncommon.



Delphacodes consimilis

*Contribution No. 757 from the Department of Entomology, University of Kansas, Lawrence.