

descriptions of four new species (Diptera: Drosophilidae). *Entomotaxonomia*, **15**: 144–154. (In Chinese with English summary and descriptions of new species.)

——— & X. C. LIANG, 1992. Seven new species of the subgenus *Lordiphosa* of *Drosophila*. *Acta zootaxon. sinica*, **17**: 473–482. (In Chinese with English diagnoses of new species.)

(Received May 14, 1994; Accepted August 1, 1994)

Jpn. J. Ent., **63**(1): 65–66. March 25, 1995

Discovery of *Catullioides albosignatus* (Homoptera, Tropiduchidae) from the Ryukyu Islands, Japan

Masami HAYASHI

Department of Biology, Faculty of Education,
Saitama University, Urawa, 338 Japan

Key words: *Catullioides albosignatus*; Tropiduchidae; Homoptera; new record; Japan.

Catullioides albosignatus (DISTANT, 1906) (Fig. 1) has been known to Taiwan, Philippines, Indonesia, etc., and it is further recorded from the Ryukyu Islands (Iriomote and Yonaguni of the Yaeyama group), Japan, for the first time. *Ommatissus apicalis* MATSUMURA, 1913, originally described from Taiwan (Tainan), has been synonymized with this species (MELICHAR, 1914). MATSUMURA (1931) stated that the planthopper is dependent upon some palmaceous trees, but the host species have not been certified (YANG *et al.*, 1989).

For the loan of material, I am grateful to Prof. Seizi AZUMA of the University of the Ryukyus, Okinawa (URN) and Mr. Masaaki TOMOKUNI of the National Science Museum, Tokyo (NSMT). The specimens indicated by SUU are in the collection of Saitama University, Urawa.

Specimens examined. [Iriomote Is.] 1♂ (SUU), Ôtomi, 13. X. 1988, M. HAYASHI *et al.*, 1♂ (SUU), Aira, 29. IX. 1993, M. HAYASHI *et al.*, 1♂ (URN), Funaura, 22. IX. 1979, S. AZUMA; 2♂ (SUU), same locality, 11. X. 1990 (light trap), M. HAYASHI *et al.*, 1♂ (SUU), same data except 12. X. 1990 (light trap); 1♂ 1♀ (SUU), same data except

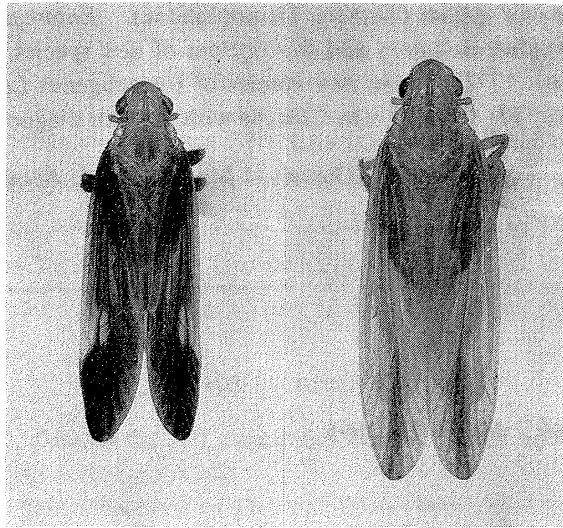


Fig. 1. *Catullioides albosignatus* from the Ryukyus. Left, ♂; right, ♀.

27. IX. 1993 (light trap); 3♂ (NSMT), Ushiku-mori, 9. XI. 1984, M. TOMOKUNI. — [Yonaguni Is.] 1♀ (SUU), Tabaru-ue, 10. X. 1990 (light trap), M. HAYASHI *et al.*, 4♂ 3♀ (SUU), same data except 8. X. 1993 (light trap).

References

- MATSUMURA, S., 1931. Rhynchota, Fulgoridae. *6000 Illustrated Insects of Japan-Empire*, pp. 1264–1274. (In Japanese.)
- MELICHAR, L., 1914. Monographie der Tropiduchinen (Homoptera). *Verh. naturf. Ver. Brünn*, 53: 1–143.
- YANG, J.-T., T. Y. CHUNG & M. R. WILSON, 1989. Tropiduchidae of Taiwan (Homoptera: Fulgoroidea). *Taiwan Mus. spec. Publ. Ser.*, (8): 65–115.

(Received November 17, 1994; Accepted December 23, 1994)