

# NEW DELPHACIDAE (HOMOPTERA: FULGOROIDEA) FROM SOUTH AMERICA AND WEST AFRICA.

By R. G. FENNAH,

Commonwealth Institute of Entomology.

THE species of Delphacidae described as new below form part of collections received for study from the Staatliches Museum für Naturkunde, Stuttgart. The writer's warmest thanks are tendered to Dr. Fr. Heller for the privilege of examining this material, the South American members of which have added appreciably to our scant knowledge of the Tropidocephalini of the New World.

The types of all new species are in the Staatliches Museum für Naturkunde, Stuttgart. The bibliographic references are cited in accordance with the usage in "A Bibliography of the Homoptera (Auchenorrhyncha)" (Metcalf, Z.P. 1942. N.C. State College of Agriculture and Engineering, University of North Carolina, Raleigh, N.C.).

## Family DELPHACIDAE Leach.

### Tribe TROPIDOCEPHALINI.

#### Columbisoga Muir.

Muir 1921 b : 483. Orthotype, *Columbisoga campbelli* Muir 1921 b : 483.

#### *Columbisoga (Columbisoga) tylotus* sp. n. (Fig. 1, A-E.)

Vertex shorter medially than broad at base (1 : 1.5), obtusely rounding into frons, distinctly narrower at apex than at base, lateral margins concave, strongly divergent basad, apical margin carinate, shallowly angulately convex, with median carinae weakly prominent, base of frons prominently visible from above, frons in middle line longer than wide at widest part (1.9 : 1), widest at middle, lateral margins convex in basal half, parallel in distal half, median carina simple, clypeus at base markedly wider than frons at apex, postclypeal disc as long as broad at base, in profile rather strongly convex, anteclypeus in profile directed caudad; entire clypeus in profile rather strongly convex; rostrum slightly surpassing mesotrochanters; antennae moderately surpassing frontoclypeal suture, basal segment as long as broad, second segment longer than first (3 : 1); ocelli distinct. Pronotum with disc as long in middle line as broad at anterior margin, lateral carinae straight or weakly convex, attaining hind margin; total length of mesonotum greater than that of scutellum (2.7 : 1); post-tibial spur with a single tooth.

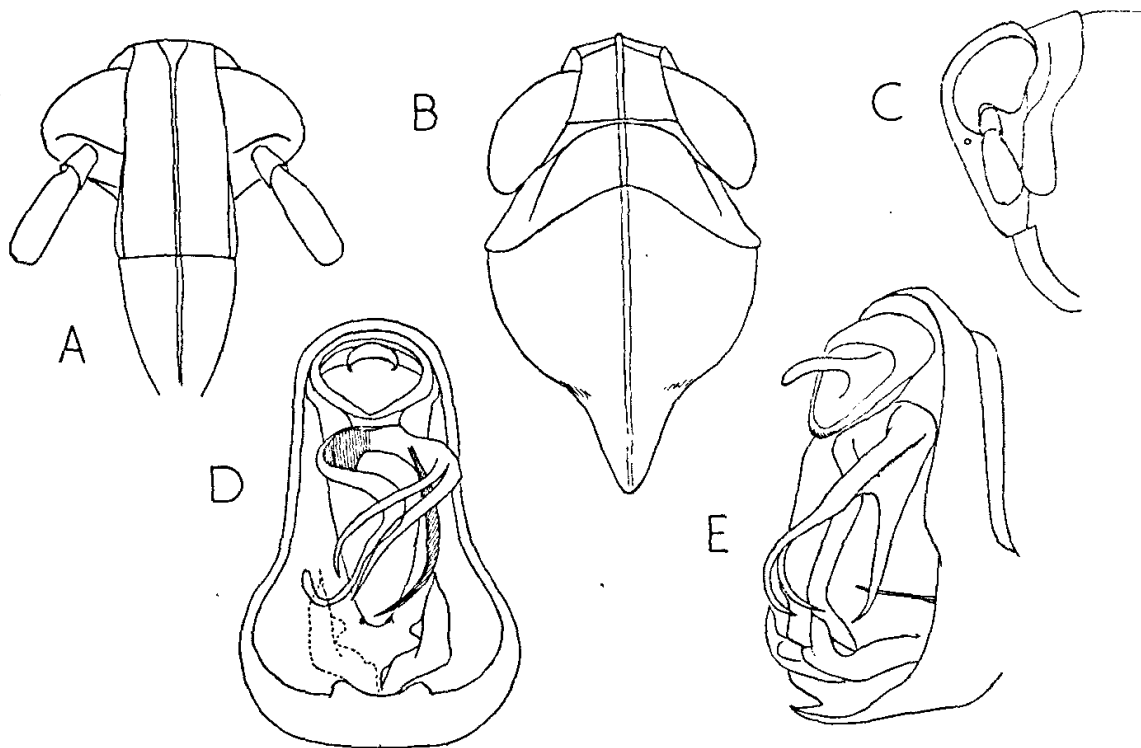
Tawny yellow; median carina of frons, and a line mid-dorsally from apex of vertex to apex of scutellum, white, narrowly edged with fuscous on pronotum and mesonotum. Abdomen dorsally reddish brown; tegulae in distal half and medioventral process of pygofer, dark fuscous. Tegmina and wings hyaline, with veins light yellowish brown. Anal

segment of male short, ring-like, apical margin rather narrowly rounded, lateroapical angles not at all produced. Pygofer short, very deep dorsoventrally, posterior opening large and rather narrow, dorsolateral angles only feebly developed, shallowly rounded, diaphragm with dorsal margin very acutely excavate, dorsal margin not ornamented at middle, but ventral margin with an unequal pair of very slender spinose processes porrect dorsocaudad; medioventral process rather large, in form of a slightly hollowed quadrate plate. *Ædeagus* unusually large and complex, divided at base into two stout rami which diverge strongly from base then recurve mesad to cross at about middle; ramus of left side simple, decurved in distal half then curved laterocephalad near apex, apically bluntly rounded; ramus of right side giving off a long stout spinose process directed ventrad, at one third from base, and a second spinose process, as long as, and parallel to, main limb, at middle. Genital styles relatively small, simple, each angulately bent dorsad at middle, and with inner margin produced mesad in a small lobe above point of flexure; each style tapering rapidly in distal quarter to acuminate apex.

Male: length, 1.8 mm., tegmen, 3.5 mm.

Holotype male, BRAZIL: Nova Teutonia, Nov. 1957 (*F. Plaumann*), in Staatliches Museum, Stuttgart. The marking of the head and thorax separate this species from all others except *C. campbelli* Muir, from South India, and *C. gynericola*, from Ecuador. From both of these it differs in having the vertex a little broader than long, and in the form of the male genitalia.

Fig. 1.



*Columbisoga tylotus* sp. n.

A, Head, anterior view; B, head and thorax, dorsal view; C, head in profile; D, male genitalia, posterior view, with one genital style shown in broken line; E, male genitalia, postero-lateral view from right.

**Columbisodes** subg. nov.

Vertex shorter medially than broad at base (about 1 : 2), rounding into frons, narrower at apex than at base, lateral margins straight, divergent basad, apical margin more or less obtusely angulately convex, Y-shaped carina absent, or basally obsolete, and feebly present anteriorly, frons in middle line longer than wide at widest part (2 : 1 to 2.5 : 1), lateral margins more or less shallowly arcuate, median carina simple; rostrum slightly surpassing mesotrochanters; antennæ reaching or a little surpassing frontoclypeal suture, basal segment a little longer than broad, second segment longer than first (1.8 : 1 to 3 : 1); ocelli present. Pronotum with lateral carinæ straight or weakly convex, attaining hind margin. Post-tibial spur with a single tooth.

Ovipositor with third valvulæ of normal delphacid pattern, in form of a pair of narrow processes, explanate and horizontal in basal third, narrow and vertical in distal two thirds, the outer surface in distal half smooth, weakly convex.

Type species of subgenus, *Columbisoga* (*Columbisodes*) *saracura* sp. n.

Member species of this subgenus are recognizable, in the female sex, by the shape of the third valvulæ of the ovipositor. These are of normal Delphacid pattern, distally narrow, with a smooth and shallowly convex surface, devoid of wax pores. In females of the typical subgenus the third valvulæ are distally flattened, slightly widened, and beset on the outer surface with a tract of ceriferous pores, and there is usually a rather deep sulcus between the third valvulæ and the valvifers.

In *Columbisodes* the head is relatively broader than in *Columbisoga*, and the narrow white median stripe on head and thorax found in the typical subgenus is usually absent.

*Columbisoga* (*Columbisodes*) *saracura* sp. n. (Fig. 2, A-F.)

Vertex shorter medially than broad at base (1 : 2), subacutely rounding into frons, distinctly narrower at apex than at base, lateral margins straight, divergent caudad, apical margin obtusely convex with submedian carinæ forming a single transverse carina, Y-shaped carina absent; frons in middle line longer than wide at widest part (1.8 : 1), widest at three-tenths from base, lateral margins convex in basal half, straight in distal half, median carina simple; clypeus at base not wider than frons at apex, postclypeal disc longer in middle than broad at base (1.3 : 1), in profile moderately convex, anteclypeus in profile strongly inclined caudad, so that entire clypeus in profile is moderately convex; rostrum slightly surpassing mesotrochanters; antennæ just attaining frontoclypeal suture, basal segment longer than broad (1.5 : 1), second segment longer than first (1.8 : 1); ocelli distinct. Pronotum with disc shorter in middle line than broad at anterior margin (1 : 1.6), lateral carinæ straight or weakly convex, attaining hind margin; total length of mesonotum longer than that of scutellum (2.8 : 1); post-tibial spur with a single apical tooth.

Ochraceous; four spots and four short transverse bars on frons, an area on gena round ocellus, carinae of pronotum and mesonotum, lateral pronotal lobes narrowly at margin, pleurites broadly at margins, femora distally, protibiae and mesotibiae except for diffuse longitudinal stripes, post-tibiae except for two diffuse bands, and post-tarsi, stramineous; a suffusion on each side of median carina of frons, first antennal segment apically, second segment basally, anteclypeus, coxae unevenly, pleurites in part, stripes or bands on legs, post-tibial spur dorsally, and abdomen, fuscous. Tegmina milky-hyaline, an irregular suffusion from middle of costa to clavus at its distal third, a suffusion overlying nodal line of transverse veins, a suffusion overlying apical veins  $M_1$  and  $M_2$  and apical margin from  $M_3$  and  $M_4$  to claval apex fuscous or smoky; veins concolorous, sparsely beset with fuscous granules. Wings hyaline, veins concolorous.

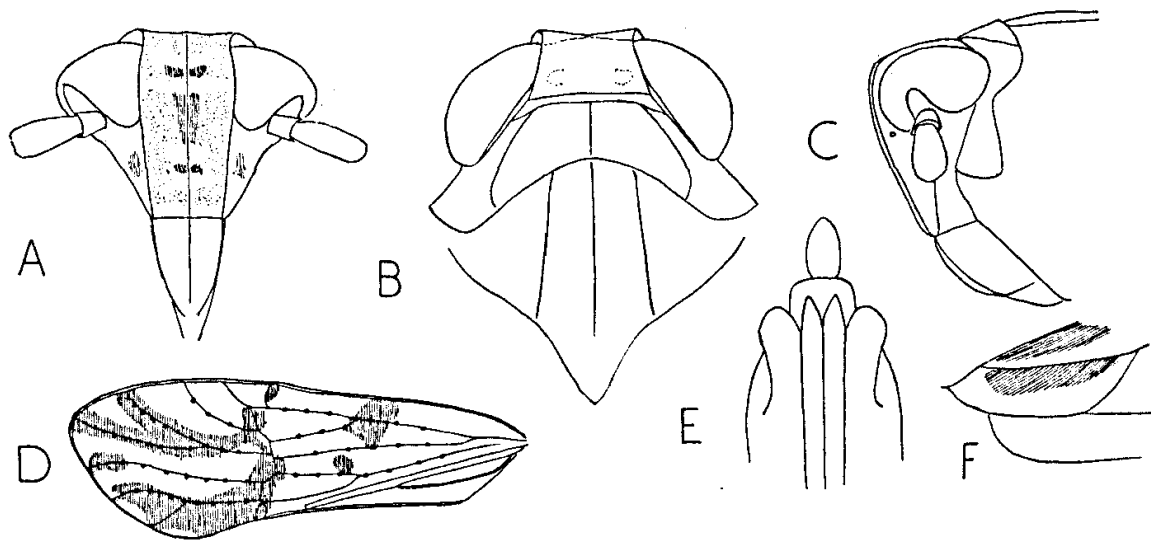
Female with first valvifers moderately short, not produced mesad at base, a little wider at middle than at base, mesal margin shallowly convex, second valvifers moderately long, each convex, impressed laterally in apical quarter. Third valvulae of ovipositor rather slender, moderately explanate in basal two fifths.

Female (macropterous) length, 3.2 mm., tegmen, 4.3 mm.

Holotype female, BRAZIL: Nova Teutonia,  $27^{\circ} 11' 8''$ – $52^{\circ} 23' 1''$ , 300–500 m., xi.1957 (*Fritz Plaumann*), in Staatliches Museum, Stuttgart.

This species appears to be nearest to *Columbisoga maculosa* Muir from Huigra, Ecuador. It differs in the relatively shorter vertex and in the less elongated tegminal membrane, and the different pattern of marking on the tegmina. In tegminal markings this species bears some resemblance to *C. chusqueae* Muir, but differs markedly in the relatively broader vertex.

Fig. 2.



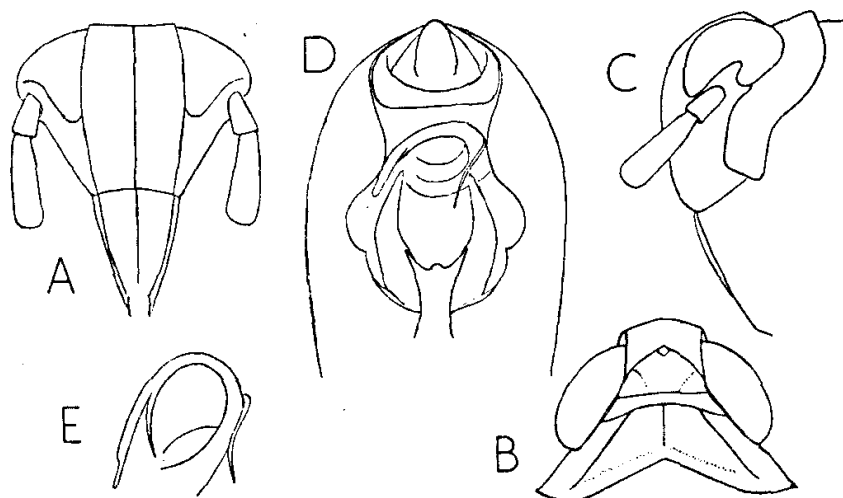
*Columbisoga (Columbisodes) saracura* sp. n.

A, Head, anterior view; B, head and thorax, dorsal view; C, head in profile; D, tegmen; E, apex of abdomen of female, ventral view, showing ovipositor, valvifers, and anal segment; F, base of one valve of ovipositor, and first valvifer, ventro-lateral view from left.

**Columbiana Muir.**Muir 1919 b : 35. Haplotype, *Columbiana lloydi* Muir 1919 b : 35.*Columbiana carasi* sp. n. (Fig. 3, A-E.)

Vertex shorter submedially than broad at base (1 : 2), evenly rounding into frons, rather narrower at apex than at base, lateral margins straight, apical margin obtusely angulate with submedian carinae fine, moderately prominent, Y-shaped carina distinct, submedian carinae uniting at apex of vertex, forming a lozenge-shaped fossette with arms of Y-shaped carina, basal compartment of vertex wider at hind margin than greatest length (about 2 : 1), frons abundantly visible from above, in middle line longer than wide at widest part (2.2 : 1), widest at apex, lateral margins straight, weakly divergent near apex, median carina simple; clypeus at base not wider than frons at apex, postclypeal disc as long as broad at base, in profile weakly convex; anteclypeus in profile weakly curved caudad; rostrum attaining mesotrochanters, subapical segment longer than apical, antennae reaching almost to level of middle of clypeus, basal segment longer than broad (nearly 2 : 1), second segment longer than first (2.5 : 1); ocelli prominent. Pronotum with disc longer in middle line than broad at anterior margin (1.2 : 1), lateral carinae straight, not attaining hind margin; total length of mesonotum longer than that of scutellum (3.8 : 1); post-tibial spur with a single tooth.

Fig. 3.

*Columbiana carasi* sp. n.

A, Head, anterior view; B, vertex and pronotum; C, head in profile; D, male genitalia, posterior view; E, apical portion of aedeagus, ventral view.

Castaneous; frons and genae except distally, vertex, except posterolaterally, pronotum, except broadly at hind margin, and mesonotum, polished black. Distal portion of frons and genae, and hind margin of pronotum, ivory-white; vertex posterolaterally, antennae, except at apex of basal segment, and abdominal ventrites posteriorly, tawny-brown; clypeus and trochanters sordid yellowish brown; femora sordid white, with fuscous suffusion distally; tibiae and tarsi fuscous. Tegmina hyaline;

a suffusion over base, and marginal vein, castaneous, veins light yellowish brown. Wings hyaline, with fuscous veins. Anal segment of male narrowly ring-like, unarmed. Pygofer rather short, posterior opening longer than broad, dorsolateral angles obtuse, weakly inflected, diaphragm very broad, with dorsal margin concave; lateral margins each produced in lower half into an acute process directed caudad; medioventral process stout, longer than lateral processes and unevenly trifurcate distally. *Ædeagus* in form of a narrow tube, curved almost in a circle horizontally; two slender sinuate spinose processes emerging on right, one short, directed dorsad, the other directed ventrad, a second slender process arising on inner side near apex, only weakly diverging from main limb, and incurved mesad; a small and extremely fine spinose process at apex, directed weakly laterocaudad. Genital styles simple, directed dorsad and shallowly curved cephalad, strongly tapering from base to apex, distal portion laterally compressed.

Male: length, 2.5 mm., tegmen, 4.0 mm.

Holotype male, Nord PERU: Caras, 2200 m., 3. vi. 1957 (*Anden-Exped.*) in Staatliches Museum, Stuttgart. Paratypes, two males, same data.

This species differs from *C. lloydi* Muir, the only other species in the genus, in details of coloration and of genitalic structure. In *C. lloydi* the ivory-white markings on the frons, genæ, and pronotum do not appear to be present, whereas in the tegmina, the infuscation of the clavus, and the presence of a darker mark at the apex of the common claval vein, find no counterpart in *C. carasi*. In the genitalia, the medioventral process of the pygofer in *C. lloydi* is bifurcate, and of a different shape from that of the present species, the *ædeagus*, as described, appears to have fewer processes, and the genital styles, in posterior view, are less strongly constricted distally than those of *C. carasi*.

### Tribe DELPHACINI.

#### *Toya* Distant.

Distant 1906 i : 472. Orthotype, *Toya attenuata* Distant 1906 i : 427.

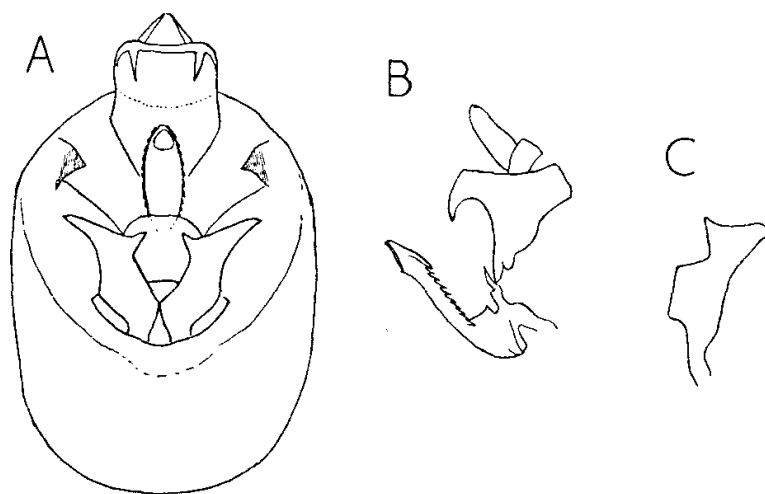
#### *Toya demophoon* sp. n. (Fig. 4, A-C.)

Vertex as long submedially as broad at base, obtusely rounding into frons, rather narrower at apex than at base, lateral margins straight or weakly concave, apical margin truncate with submedian carinæ slightly prominent, Y-shaped carina obscure, submedian carinæ uniting at apex of vertex or at extreme base of frons, basal compartment of vertex wider at hind margin than greatest length (2 : 1) and than median length (2.3 : 1); frons in middle line longer than wide at widest part (slightly more than 2 : 1), widest at middle, lateral margins arcuate, median carina simple; clypeus at base very slightly wider than frons at apex, postclypeal disc scarcely as long as broad at base, in profile shallowly convex, anteclypeus in profile rather strongly convex so that entire clypeus in profile is moderately convex; rostrum surpassing mesotrochanters but not

attaining post-trochanters; antennæ reaching to level of middle of post-clypeus, basal segment longer than broad (1.4 : 1), second segment longer than first (nearly 2.8 : 1); ocelli distinct. Pronotum with disc as long in middle line as broad at anterior margin, lateral carinæ straight, not attaining hind margin. Total length of mesonotum greater than that of scutellum (2.8 : 1). Post-tibial spur with 25 minute teeth.

Tegmina much surpassing abdomen, moderately broadly rounded at apex, Sc + R forked slightly basad of level of Cu 1 fork, both distinctly distad of level of union of claval veins.

Fig. 4.

*Toya demophoon* sp. n.

A, Male genitalia, posterior view; B, anal segment of male, and aedeagus, right side; C, genital style.

Stramineous; intercarinal areas of frons and clypeus, genæ, first antennal segment distally, second segment dilutely, anterior margin of mesonotum, all pleurites and coxæ except at margins, longitudinal stripes on femora and tibiæ, and abdomen, fuscous. Intercarinal areas of vertex and pronotum, and mesonotum, except for pale carinæ, light orange-brown. Tegmina hyaline, veins concolorous in corium, pale yellowish brown in membrane. Wings hyaline, with veins dilute fuscous.

Anal segment of male short, collar-like, lateroapical angles well separated, each produced ventrad in a stout spinose process. Pygofer moderately long, posterior opening as long as broad, dorsolateral angles each distinctly produced in a triangular lamina, acuminate and strongly inflected mesad, diaphragm with dorsal margin moderately shallowly concave with median third produced dorsad in a shallowly rounded lobe, medioventral process absent. Aedeagus tubular, dorsoventrally compressed, moderately ascending distad, with a row of about ten fine teeth along each lateral margin for most of its length; orifice ventrally at apex. Genital styles rather short, broad, constricted at middle, with outer margin shallowly angulately concave, and inner margin subrectangulately excavate, apical margin narrowly produced mesad and more broadly produced laterad.

Male: length, 2.8 mm., tegmen, 3.1 mm.

Holotype male, KAMERUN; Malende-Banca, 125 m., 5-20. xii. 1957 (leg. H. Knorr) in Staatliches Museum, Stuttgart. This species is most readily distinguished by the inflected and acute dorsolateral angles of the pygofer, in conjunction with the shape of the genital styles. The affinities of this species are by no means clear; it is provisionally regarded as being nearest to the group of species represented by *Delphacodes hessei* Muir.

### Asiracina Melichar.

Melichar 1912 c : 132. Orthotype, *Asiracina punctovenosa* Melichar 1912 c : 133.

#### *Asiracina micraulax* sp. n. (Fig. 5, A-H.)

Vertex shorter submedially than broad at base (1 : 1.1), subrectangulately rounding into frons, a little narrower at apex than at base, lateral margins straight or very slightly concave, apical margin truncate, with submedian carinae moderately prominent, Y-shaped carina feeble, submedian carinae not uniting on vertex, basal compartment of vertex wider at hind margin than greatest length (nearly 2.2 : 1), and than median length (2.3 : 1), frons in middle line longer than wide at widest part (2 : 1), widest at two fifths from base, lateral margins concave between eyes, thence parallel, median carina forked at about two fifths from base, clypeus at base distinctly wider than frons at apex, postclypeal disc longer than broad at base (not quite 1.2 : 1), in profile moderately convex, anteclypeus in profile almost straight; entire clypeus in profile moderately convex; rostrum surpassing mesotrochanters, but barely reaching posttrochanters; antennae reaching to level of middle of postclypeus, basal segment longer than broad (3 : 1), second segment longer than first (1.5 : 1); ocelli small. Pronotum with disc longer in middle line than broad at anterior margin (nearly 1.2 : 1), lateral carinae weakly concave, not attaining hind margin. Femora and tibiae of fore and middle legs slightly compressed, but not at all foliately expanded; post-tibial spur with about 35 teeth.

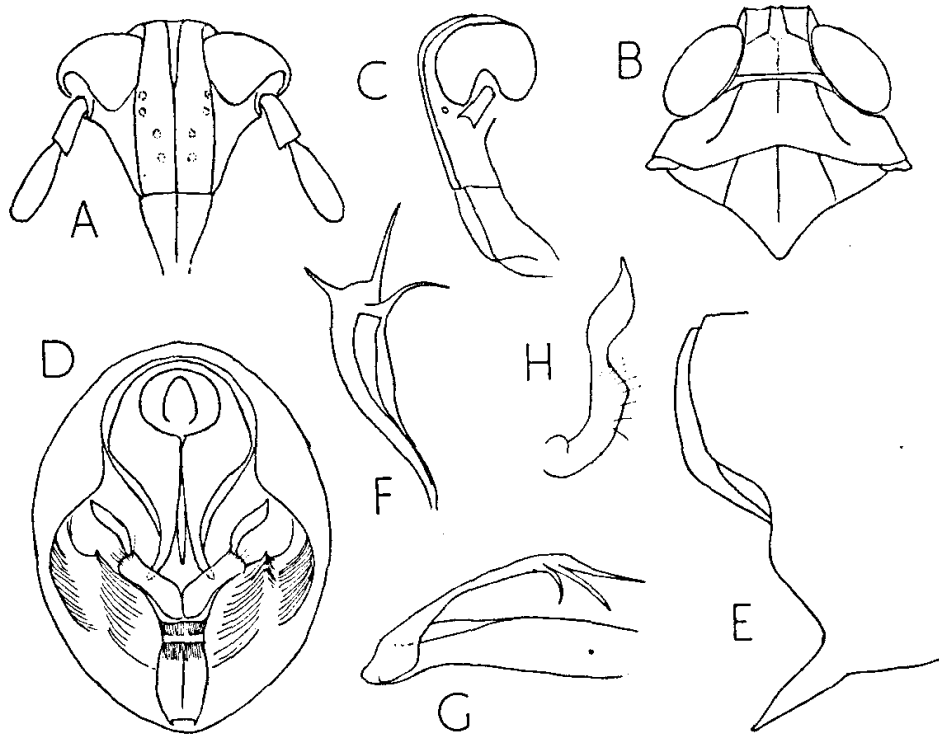
Castaneous; twenty round spots on frons and four on each gena, apical margin of frons, carinae of vertex, second antennal segment, spots on pronotum and mesonotum, pleurites at margins, tibiae at base and apex, post-tarsi, in male a large spot dorsally overlying last three abdominal terga, seventh and eighth ventrites, impressed portion of lateral margin of pygofer, and genital styles in distal half, in female, middle line and six rows of linear marks on last three abdominal terga, and first valvifers, ochraceous.

Anal segment of male moderately short, collar-like, latero-apical angles almost contiguous, each broadly produced ventrad in a curved bluntly spinose process. Pygofer short, posterior opening longer than broad, dorsolateral angles obtusely rounded, scarcely produced, strongly inflected mesad, diaphragm with dorsal margin thickened, median portion short, produced dorsad in a small triangulate lobe; lateral margins of pygofer excavate in their lower half, mesal margin of excavation produced dorsad in a short acute lobe, medioventral process long, in profile wedge-shaped,



tapering distad, shortly bifid at apex. Aedeagus long, laterally compressed, acute distally, a flagellum arising at apex reflected cephalad above aedeagus, widening distally and produced into three subequal slender spinose processes, two at apical angle of right side and one at apical angle of left side. Genital styles stout, moderately long, in side view strongly sinuate, granulate in basal half, slightly constricted at middle, rather twisted distally and acuminate at apex.

Fig. 5.



*Asiracina micraulax* sp. n.

A, Head, anterior view; B, head and thorax, dorsal view; C, head in profile; D, male genitalia, posterior view; E, pygofer and anal segment of male, right side; F, aedeagal flagellum, dorsal view; G, aedeagus, right side; H, genital style.

First valvifers strongly tumid at base, produced mesad to meet in middle line. Third valvulae of ovipositor widely explanate in basal two fifths.

Male (brachypterous): length, 3.0 mm.

Female (brachypterous): length, 3.8 mm.

Holotype male, KAMERUN: Mueli, 1. ii. 1958, 560 m. (*leg. H. Knorr*), in Staatliches Museum, Stuttgart. Paratypes, 3 ♂, 1 ♀, same data; 5 km. südt Mueli, 3 ♀.

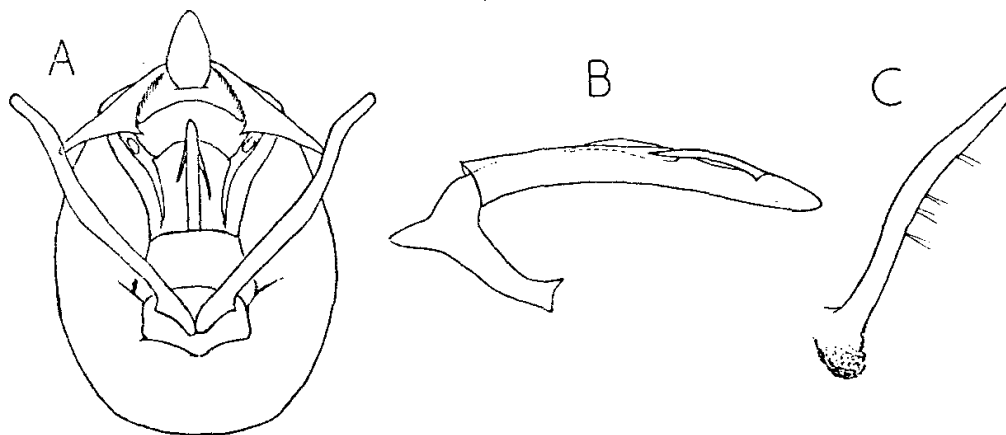
This species is close to *Dicranotropis turneri* Muir, from Pondoland, but differs in having a relatively longer vertex, and a more parallel-sided frons, with a more shortly furcate median carina. The genitalia are similar in pattern, but differ to some extent in almost every detail. It is possible that ultimately forms may be found in intervening areas that bridge the gap between these two species, but at present the differences appear to be too great to justify their being regarded as conspecific.

**Dicranotropis** Fieber.Fieber 1866 : 521. Logotype, *Delphax hamata* Boheman 1847 : 45.*Dicranotropis sectator* sp. n. (Fig. 6, A-C.)

Vertex shorter submedially than broad at base (about 1 : 1.2), evenly rounding into frons, narrower at apex than at base, lateral margins straight, apical margin truncate with submedian carinae moderately prominent, Y-shaped carina weakly present, submedian carinae passing separately on to frons, basal compartment of vertex wider at hind margin than greatest length (2.4 : 1) and than median length (about 2.6 : 1), frons in middle line longer than wide at widest part (2.2 : 1), widest about one third from base, lateral margins shallowly convex, median carina forked at two fifths from base; clypeus at base not wider than frons at apex, postclypeal disc a little longer in middle than broad at base (1.1 : 1), in profile very shallowly convex, anteclypeus in profile moderately convex, and entire clypeus in profile moderately convex; rostrum attaining post-trochanters; antennae distinctly surpassing level of fronto-clypeal suture, basal segment longer than broad (1.8 : 1), second segment longer than first (2.2 : 1); ocelli distinct. Pronotum with disc as long in middle line as broad at anterior margin, lateral carinae weakly concave, not attaining hind margin; total length of mesonotum greater than that of scutellum (2.5 : 1); post tibial spur with 26 teeth. Tegmina much surpassing abdomen, narrowly rounded apically, Sc + R fork slightly basad of Cu 1 fork, both distad of level of union of claval veins.

Testaceous or ochraceous; ten to twelve small round spots on frons, and two on each gena, carinae of frons and clypeus, and three or four pustules on each side of pronotum behind eye, stramineous; median carina of vertex, carinae of pronotal disc, and of mesonotum broadly, white, or nearly so, intercarinal areas of pronotum and mesonotum pale orange-brown; mesopleura and abdomen, fuscous. Tegmina hyaline, margin pale, veins narrowly fuscous in corium, more broadly so in membrane. Wings hyaline, with fuscous veins.

Fig. 6.

*Dicranotropis sectator* sp. n.

A, Male genitalia, posterior view; B, aedeagus, left side; C, genital style.

Anal segment of male rather large, yoke-shaped, with lower margin distally produced ventrolaterad, lateroapical angles widely separated, each produced mesoventrad in a curved spinose process. Pygofer moderately long, posterior opening longer than broad, dorso-lateral angles not at all produced, diaphragm rather narrow, with dorsal margin deeply concave, devoid of ornamentation at middle; medioventral process weakly present. *Ædeagus* long, tubular, slightly compressed laterally, a spinose process arising dorsally on right at middle, directed cephalad; a second spinose process arising dorsally on left at apical sixth, also directed cephalad, both processes lying close against *ædeagus*. Genital styles simple, exceptionally long and slender, almost equally wide throughout, weakly sinuate, parallel-sided, rounded-truncate at apex, distinctly produced caudad at base in a coarsely granulate knob.

Male: length, 3.4 mm., tegmen, 3.8 mm.

Holotype male, KAMERUN: Malende-Banca 125 m., 5-20. xii. 1957 (*leg. H. Knorr*), in Staatliches Museum, Stuttgart.

This species is readily recognizable by the flaring form of the anal segment and the exceptionally elongate, rod-like genital styles. In general bodily features it is most readily recognized by the comparatively narrow form of the vertex, in which it resembles *D. capensis* Muir, and by the tegminal coloration.

#### Nicetor gen. n.

Width of head, including eyes, much narrower than width of pronotum. Vertex about as long medially as broad at base, obtusely rounding into frons, as wide at apex as at base, lateral margins straight, apical margin transverse, with submedian carinae moderately prominent, Y-shaped carina distinct, submedian carinae not uniting on vertex, basal compartment of vertex wider at hind margin than greatest length (more than 2 : 1); frons in middle line longer than wide at widest part (about 2 : 1), widest at level of antennae, lateral margins concave between eyes, straight distally, median carina forked at level of base of antennae, clypeus at base not wider than frons at apex, postclypeal disc longer than broad at base, in profile almost straight, anteclypeus in profile strongly convex; rostrum long, attaining post-trochanters; antennae reaching about to level of middle of clypeus, basal segment longer than broad (2.5 : 1 or 3 : 1), second segment slightly longer than first; ocelli distinct, small. Pronotum with disc longer in middle line than broad at anterior margin, lateral carinae concave, diverging posteriorly, not attaining hind margin. Total length of mesonotum greater than that of scutellum (about 2 : 1). Fore-legs laterally compressed, but not foliately expanded; post-tibial spur with 35-40 teeth; basal metatarsal segment longer than second and third combined. Tegmina with Sc + R fork about level with union of claval veins, Cu 1 fork more distad; common claval veins only about half as long as the separate portion of the anterior vein. Anal segment of male narrowly ring-like, lateroapical angles not produced in a process. Pygofer

short, posterior opening about as long as broad, diaphragm with dorsal margin unarmed, lower margin produced caudad medially in a spinose process, medioventral process absent. Genital styles moderately long, each expanding distad.

Type species, *Dicranotropis brunnea* Muir 1926 b : 24.

This genus differs from *Dicranotropis* in the form of the spur, the long rostrum and antennæ, the proportions of the post-tarsal segments, and in the position of the forks in the tegminal veins. From *Euidella*, to which it is perhaps nearest, it differs in the truncate anterior margin of the vertex, the compressed fore and middle legs, the tegminal venation, the pattern of the male genitalia, and in the relatively broader bodily form. A distinctive feature most readily to be seen is provided by the outline of the head and thorax in dorsal view: a line from each tegula to the middle of the apical margin of the head meets its fellow there at a right angle, or nearly so. By contrast, in those species of *Euidella* in which the head is appreciably narrower than the width of the pronotum the angle so made is acute.

The only other species that can at present be referred to this genus is *Dicranotropis pallidinervis* Muir (1962 b : 24).