



## **A Review on Brown Planthopper (*Nilaparvata lugens* Stål), a Major Pest of Rice in Asia and Pacific**

**Kari Iamba<sup>1\*</sup> and Danar Dono<sup>2</sup>**

<sup>1</sup>Department of Agriculture, Private Mail Bag, PNG University of Natural Resources and Environment, Vudal, Kokopo, East New Britain, 613, Papua New Guinea.

<sup>2</sup>Department of Plant Pests and Diseases, Faculty of Agriculture, Universitas Padjadjaran, Jatinangor 45363, Indonesia.

### **Authors' contributions**

*This work was carried out in collaboration among between authors. Author KI collected relevant literatures on brown plant hopper, analyzed and formulated the review. Author DD contributed his technical knowledge as research supervisor. Both authors read and approved the final manuscript.*

### **Article Information**

DOI: 10.9734/AJRCS/2021/v6i430122

#### Editor(s):

(1) Dr. Al-kazafy Hassan Sabry, National Research Centre, Egypt.

#### Reviewers:

(1) Tamer El-Sisy, Agriculture Research Center, Egypt.

(2) Liaoxun, Guizhou University, China.

(3) Anlong Hu, Guizhou University, China.

Complete Peer review History: <https://www.sdiarticle4.com/review-history/71341>

**Review Article**

**Received 14 May 2021**

**Accepted 19 July 2021**

**Published 31 July 2021**

### **ABSTRACT**

Rice (*Oryza sativa* L.) is the most important staple food in the world including Asia and Pacific. Millions of people around the world depend on rice due to the high calories and economic returns it provides. More than 100 species of insects including 20 economic pests are capable of causing notable damage to rice plants. Insect pests continue to pose threat to rice farming since rice plants serve as their host plants. Pests are major constraints to rice production and coexist with rice growth. Information on pest economic importance, description, biology, distribution, economic threshold level, population dynamics, monitoring and forecasting is a prerequisite. This review is focused on brown planthopper (*Nilaparvata lugens* Stål) which is an important economic rice pest that are prevalent in tropical rice growing regions. Brown planthopper (BPH) is a serious pest of rice and has tremendous impact especially in Asia-Pacific region. Understanding the biology and ecology of this pest will enhance the designing, formulation and utilization of effective control measures. The control strategies as stipulated by integrated pest management (IPM) should be eco-friendly with minimum use of synthetic pesticides while

\*Corresponding author: E-mail: [kari.iamba@gmail.com](mailto:kari.iamba@gmail.com), [kiamba@unre.ac.pg](mailto:kiamba@unre.ac.pg);

boosting the activities of natural enemies and other biological control agents. The control measures discussed in this paper are oriented towards the cultural and biological aspects of managing the pest.

*Keywords: Nilaparvata lugens Stål; rice; Asia; pacific; integrated pest management; biological control.*

## 1. INTRODUCTION

### 1.1 BACKGROUND OF BROWN PLANT-HOPPER

Rice (*Oryza sativa* L.) is the most important staple food in the world including Asia and Pacific. Millions of people around the world depend on rice due to the high calories and economic returns it provides [1,2]. Consumption of rice is steadily increasing with the changing demographic scenario in Papua New Guinea (PNG). Population boom, rural to urban migration, improved employment opportunities and shift in consumer preferences to staple foods like rice, flour and tinned fish has led to a decline in the consumption of indigenous vegetables in PNG [3]. Rice is becoming a staple food for most people in PNG because it is readily available in shops, possess high calories for energy, taste superb and produce sufficient quantities when boiled.

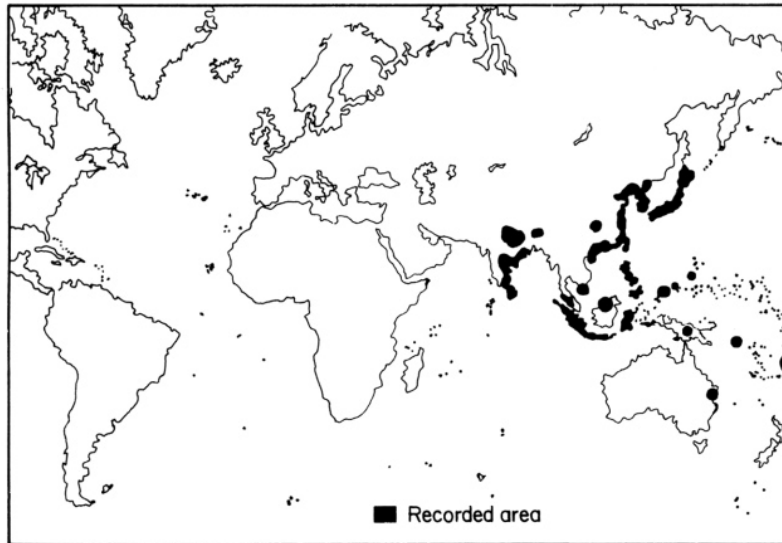
More than 100 species of insects including 20 economic pests are capable of causing notable damage to rice plants [4]. Insect pests continue to pose threat to rice farming since rice plants serve as their host plants [5]. Pests are major constraints to rice production and coexist with rice growth [6,7]. Information on pest economic importance, description, biology, distribution, economic threshold level, population dynamics, monitoring and forecasting is a prerequisite [8]. Partitioning of insect attacks on rice plants can be categorized into specific feeding guilds based on their feeding behaviour and preferences [9,10,11]. They can also utilize the plant parts to complete their reproduction cycle where oviposition and proceeding larval development feed on plant parts for food resources and thus damaging rice plants [12,13].

This review is focused on brown planthopper (*Nilaparvata lugens* Stål) which is an important economic rice pest that are prevalent in tropical regions. Brown planthopper is a serious pest of rice and has tremendous impact around the world and especially in Asia-Pacific region. Understanding the biology and ecology of this pest will enhance the designing, formulation and

utilization of effective control measures. The control strategies as stipulated by integrated pest management (IPM) should be eco-friendly with minimum use of synthetic pesticides while boosting the activities of natural enemies and other biological control agents. The control measures discussed in this paper are oriented towards the cultural and biological aspects of managing the pest with a few mention of insecticides. IPM promotes the biodiversity of natural enemies in rice fields as they are the key component to success in biological control of pests [14,15]. The use of chemical insecticides, especially in the early crop season disrupts natural enemy activity therefore it has been recommended to minimize their applications [16]. IPM may not have a distinct definition, but it discourages the indiscriminate use of chemical pesticides and promotes biological techniques that use natural parasites and predators to control pests [17]. In contrary to the use of chemical insecticide which have become a traditional pest control practice, farmers should be well informed and be educated about the importance of biological control.

### 2. IMPORTANCE OF BROWN PLANT-HOPPER

Brown planthopper (Homoptera: Delphacidae: *Nilaparvata lugens* Stål) is one of the most destructive pests of rice in widely distributed in Asia and Pacific region. Brown planthopper (BPH) has occurrences in China [18,19], India [20,21], Sri Lanka [22,23], Bangladesh [24, 25], Thailand [26,27], Vietnam [28,29], Malaysia [30,31], Korea [32,33], Japan [34,35], Indonesia [36,37], Philippines [38,39], Fiji [40], Papua New Guinea [41,42], and Solomon Islands [43]. Fig. 1 shows the distributional locations of BPH occurrences in Asia and Pacific region. BPH increasingly exhibit resistance to insecticides and adaptation to resistant varieties, so they threaten rice production thus food security [44]. BPH outbreaks occur when the population of Arthropod Natural Enemies (ANEs) decreases, either by natural events such as floods and drought or agronomic practices, or by excess use of fertilizers and pesticides [45].



**Fig. 1. Blacken areas show the distributional location of brown planthopper, *Nilaparvata lugens* (Stål) [46]**

They can be secondary pests serving as herbivores but favourable environmental conditions may trigger their outbreak as major pests of rice [46,47]. High arthropod biodiversity in rice fields are derived from sufficient species richness of predators and parasitoids which can suppress outbreaks of BPH [48,45]. Heong [45] stated that BPH outbreaks became negligible when insecticide use decreased as it boosted arthropod biodiversity and population [49,48]. The use of urea fertilizer as source of nitrogen can also lead to outbreaks by increasing the fecundity [50,51]. With the risk of synthetic insecticides and nitrogenous effect, biological control should be investigated further.

### **3. DAMAGE ASSESSMENT OF BROWN PLANTHOPPER IN RICE**

BPH as major pest in rice can lower the grain yield by impeding the development and growth of rice plants. Their feeding depends on host quality where they extract their food resources through sucking of plant sap and oviposit their eggs in stems [52]. The feeding, oviposition, larval development and transmitted diseases of Grassy Stunted Disease and Ragged Stunted Disease coherently favour BPH as a destructive pest of rice [53, 54, 55]. A severe infestation occurred in Southern Vietnam from 2005 to 2006 where more than 485,000 ha of rice fields were affected by viral diseases seemingly transmitted by BPH and other insect vectors which amounted to loss of US\$120 million [56]. Thus the impact of BPH

is measured in terms of economic threshold level that can be correlated to yield loss. The main objective of modern pest management program is to suppress or maintain pest population below an economically and ecologically tolerable level [57,58,59,60].

The incremental returns should exceed incremental costs of control which is expressed in terms of Economic Threshold Level (ETL) of pest in rice [61,62]. To determine ETL, it requires a quantitative study of various pest-crop interactions. ETL has many factors which include; pest species (biotype) behaviour, pest developmental stage, pest age structure, pest dispersion, pest population density, pest infestation period, pest population dynamics, crop variety (susceptible to pest attack), plant stage (time of attack, tolerance, compensatory capacity), site of attack (on plant and field), crop management practices, species competition, natural enemies and weather (abiotic factors) [63]. Economic variables such as price of crop products, cost of control measures, and data on pesticide efficiency and efficacy are also important variable included in ETL [63,61]. A proposed simple model for calculating ET value is as follows:  $ET = (\text{Cost of Control}) \div (\text{yield} \times \% \text{ Yield reduction} \times \text{Price of crop} \times \text{Efficiency of control} \times \text{Pest survival coefficient}) \times (\text{critical factor})$  [64].

Yield loss of rice plants in relation to BPH population have been studied by caging and

artificially infesting rice plants at various growth stages over a fixed period [65, 64, 66]. The results showed that plants differ in BPH infestation at different growth stages with booting as the most sensitive stage followed by milking, maximum tillering and the soft seedling stage. The yield loss threshold at booting stage (panicle initiation) is 2-3 BPH/hill and 4 BPH/hill at maximum tillering stage [63]. To justify BPH ETL prior to application of control measures, simple random sampling and monitoring is a pre-requisite [67, 68]. Cheng [64] recommended 30-50 rice hills to be sampled in the field to meet a 20% precision level. ETL works efficiently with sequential sampling plan [69].

#### 4. MORPHOLOGY, MIGRATION AND IMPACT OF BROWN PLANTHOPPER

In Japan, BPH (*N. lugens*) is considered as a pest of economic importance among *Sogatella furcifera* (Horv.) and *Laodelphax striatella* (Fall.) [70]. BPH differ from its sister sub-order, Sternorrhyncha, which include aphids, whiteflies and scale insects [71]. Adult is brownish black with yellowish brown body (4-5mm) and has a distinct white band on its mesonotum and dark brown outer sides. The adults can exist as dimorphic, macropterous and brachypterous (Fig. 2). Macropterous adults (long-winged) have

normal front and hind wings, whereas brachypterous forms (short-winged) have reduced hind wings [71]. A prominent tibial spur present on the third leg distinguishes *N. lugens* from other two genera, *Afrokalpa* and *Nethokalpa* [72]. Macropterous forms (usually female) are adapted for long distance flights and are known to migrate thousands of kilometres across land and sea [73, 74]. These forms are the first to arrive at newly planted fields and began colonization. The adults mate on the day of emergence and gravid females start laying eggs thereafter while adults may live up to 25 days [71].

BPH are Homopterans of Delphacidae family that possess a prominent sucking mode of feeding that draws sap from phloem in stems of rice plants [76]. Due to the continuous sucking of phloem sap, plants turn yellow, dries up quickly and soon a wide area of rice plants turn brownish resulting in 'hopper burn', and yield loss [77]. These outbreaks are exacerbated by viral diseases; Grassy Stunted Disease and Ragged Stunted Disease transmitted by BPH as the vector [53, 54,55]. The plant damage caused by these viral diseases can sometimes supersede the attack of vector [78]. Fig. 3 shows the symptoms of viral diseases that are transmitted by BPH.

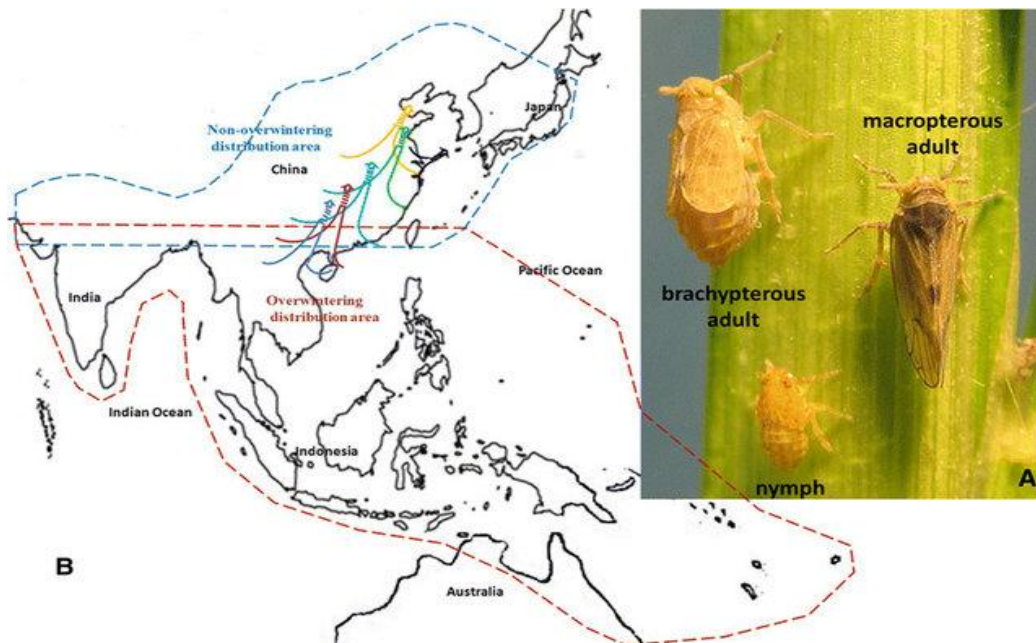
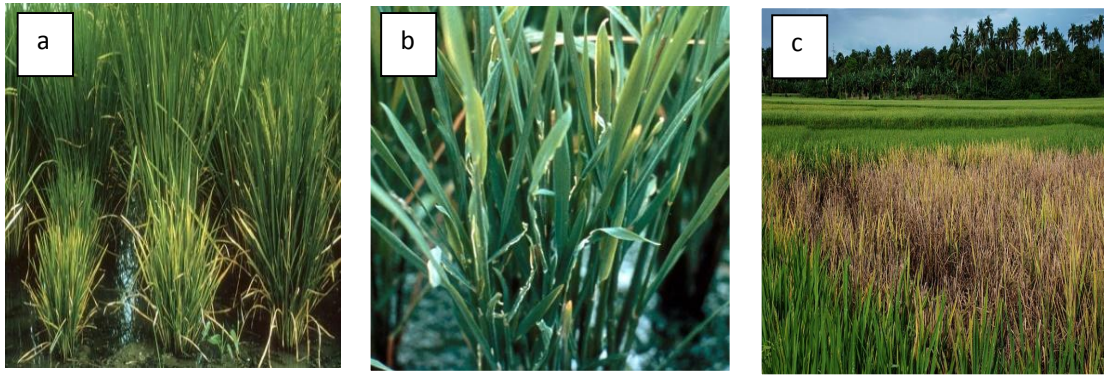


Fig. 2. Long-winged (macropterous) form (A), short-winged (brachypterous) form (A) and worldwide distribution and possible migratory routes (B) of BPH [75]



**Fig. 3. BPH transmits the grassy stunt (a) and ragged stunt (b) viral diseases as it feeds on the phloem sap of rice stems, and in severe cases, a 'hopper burn' (c) occurs (source: [www.knowledgebank.irri.org](http://www.knowledgebank.irri.org)).**

## 5. BIOLOGY OF BROWN PLANTHOPPER

As described by Mochida and Okada [71], BPH eggs are usually laid in groups at lower part of the rice plant, especially in sheaths and also in leaf blades. But the sizes and sites of egg-groups depend upon the growth stage of the rice plant. When the adult population is high, eggs are found in the upper parts of rice plants. The egg stage is about 7 to 11 days in the tropics. The nymphal stage is 10 to 15 days via five instars. The pre-oviposition period averages 3 to 4 days for brachypterous females and 3 to 10 days for macropterous females at constant temperatures of 20–33°C [71]. Pre-oviposition period of migratory macropters were prolonged by approximately 1 month [79]. Duration of each stage depends on temperature and cultivars. In the greenhouse each female lays about 100 to 200 eggs. The adults and nymphs usually stay on the lower parts of rice plants. However, when the population is very high—in Java more than 500 per hill—they are observed to swarm even on flag leaves, the uppermost internodes of panicles, and panicle axes [71]. In tropical lowlands, *N. lugens* may have 2 to 8 generations during one rice cropping season with five generations on a single rice crop in Japan [80], five or six generations in China [81], and four or five generations in Java [82]. The seasonal occurrence of *N. lugens* in the tropics depends on availability and longevity of standing rice plants. In many rainfed paddy fields in Java, rice is absent during the dry season. BPH is less abundant during dry season when rice plants are absent, but present in some irrigated fields even in dry season [82].

## 6. ECOLOGY OF BROWN PLANTHOPPER

Rice (*Oryza sativa* L.) is the most preferable host plant of BPH [83]. Other plants have been observed to serve as alternative habitat for the insect [40,84]. A few alternate hosts identified includes *Eleusine coracana*, *Leersia hexandra*, *L. japonica* Makino, *Saccharum officinarum* L., *Zea mays*, *Zizania latifolia* Turcz., and *Zizania longifolia* [85,86,87,88]. The continuous availability of rice plants including ratoon rice with absence of fallow period increases the population density of BPH [89,90,43, 91, 92,38]. Rice stubble also provides a reservoir, refugia or even a suitable breeding point for BPH therefore stubble management is recommended as a control measure [86,93,94,95,96]. Extensive rice fields with dense plant stand and availability of non-rice plants in the vicinity are presumed to positively affect pest population [97, 98, 99, 22,38].

Abiotic factors can also influence BPH development and population dynamics, including outbreaks in rice field. This includes mean temperature, rainfall and relative humidity. Temperatures between 25 and 30°C are considered optimal for egg and nymphal development of BPH [89,93,100]. The rate of development increases as temperature increases. A humid environment (70 to 85% relative humidity) is preferred by *N. lugens*, and is conducive to its development and population increase [97,28,101,99,102,26,46]. A relatively warm and high humidity environment favors the outbreak of this pest [103,89,102]. It was suggested that typhoons could reduce BPH numbers [38] and the limited air movement within the microhabitat could increase populations

[28,101]. The dense canopy produced by high-tillering varieties, close spacing and high fertility, combined with continuously flooded fields, produces a microclimate that favours multiplication of BPH [99, 46,104].

## 7. BIOLOGICAL CONTROL OF BROWN PLANTHOPPER

Biological control may involve the use of natural enemies such as predators, parasitoids and entomopathogens to lower BPH population in rice field. BPH population was low, partly due to presence of predators such as mirid bugs (*Cyrtorhinus* spp., *Tytthus parviceps*) [105, 106]. Predatory spiders, aquatic bugs (*Microvelia* spp.), coccinellid beetles (Coccinellidae), ground beetles (Carabidae) and rove beetles (Staphylinidae) also suppress BPH population [90,107]. *Cyrtorhinus lividipennis* which is a predator of both eggs and larvae of BPH apparently prevents the increase of the BPH population in drilled rice fields [40,108,109]. At least 19 species of hymenopterans Eulophidae, Mymaridae (*Anagrus* sp.), and Trichogrammatidae (*Oligosita* sp.) are egg parasites of BPH [110]. Sixteen species belonging to Hymenoptera (Dryinidae), Strepsiptera (Elenchidae), and Diptera (Pipunculidae) were identified as parasites of BPH nymphs and adults [110,111,112].

Low pest damage was observed under unsprayed irrigated rice fields since it encourages more natural biological control that kept planthoppers and other potential pests in check [113, 114]. Insecticide application in tropical rice are the most likely cause of pest problems since they lower the population of natural enemies and encourage pest resurgence [108, 9,115]. Bae and Pathak [103] speculated that an infection of *Entomophthora* spp. helped reduce pest density, but Hinckley [40] concluded that fungi caused less pest mortality than predators and parasitoids.

## 8. RESISTANCE RICE VARIETIES

Initial studies on varietal resistance to the BPH was done by the International Rice Research Institute (IRRI). IRRI has developed and documented efficient mass-screening techniques for assessing and evaluating different rice germplasms worldwide [116]. The varieties ASD7 and Mudgo were resistant in the Philippines [117], Japan [118], Korea [119], Taiwan [120], Thailand [121], and Indonesia [122] however they were susceptible in India [104]. The different

reactions could be due to the presence of different populations of BPH in different locations and countries. In the future, the sources of resistance so far identified should be retested against the different biotypes to tackle the development of biotypes capable of surviving on the resistant plants. Four major genes that impart resistance to the BPH were identified in the rice germplasm at International Rice Research Institute (IRRI). When resistant cultivars (IR26, IR28, IR29, IR30, and IR34) with the *Bph 1* gene were released, BPH problems almost disappeared in farmers' fields in some countries of Asia [123,124, 125, 126]. Furthermore, they were at first resistant but after about 2 years became susceptible to the BPH in the Solomon Islands, Philippines, and Indonesia [124]. The factors associated with BPH outbreak include cropping of high-yielding susceptible rice cultivars, high application of nitrogenous fertilizers, continuous irrigation, excessive insecticides, high plant density, extensive rice fields, and continuous rice cropping high yielding susceptible cultivars [46,51,127]. Using of resistant varieties with horizontal resistance is better than those with vertical resistance.

## 9. CULTURAL CONTROL

Cultural control is the most simplified method of control perhaps as old as agriculture itself [117]. Unlike insecticidal control, cultural control may not give immediate results but it provides a first line of defense against pest attack and orients from ecological and economical concepts [128]. Insects can survive on alternate hosts but does not multiply well as they do on rice plants [129]. Fallowing period when rice is not grown thus helps in reducing the population of insect pests [117]. Rotating rice plants with other annual crops or fallowing between two rice seasons disrupts the life cycle and population build-up of the pest [130]. Rotating with non-host plants such as soybeans, mung bean, sweet potatoes and marigold flowers can reduce population of insect pests [131,132]. Integration of crop rotation with resistant varieties (IR26, IR28, IR30) should further lower the population and impact of BPH [129,117]. A concurrent planting with secondary non-host plants should be utilized and extensively [90,129,117].

## 10. CHEMICAL CONTROL AND PEST RESISTANCE

In most rice growing regions, chemical control is still a common method of controlling BPH [16,

133]. Due to intensive and indiscriminate use of insecticides, this pest has gradually developed resistance to most of the chemical insecticidal classes [134]. These major classes of synthetic insecticides include organophosphates, carbamates, pyrethroids, neonicotinoids, insect growth regulators, and phenylpyrazoles [68,135]. The neonicotinoid insecticide, imidacloprid, was introduced into Asia to control BPH in the early 1990s [136]. Resistance to this insect neurotoxin become widespread in field populations across Asia region between 2005 to 2012 [137]. As a result, imidacloprid was suspended in 2006 followed by subsequent banning of fipronil and buprofezin in 2009 and 2013 [134]. Insect resistance to insecticide chemicals involves the mutations of detoxifying enzyme genes and amino acid mutations of targeted genes [138,139]. Since then, pymetrozine, thiamethoxam, flupiprole, nitenpyram, dinotefuran, sulfoxaflor and chlorpyrifos have been introduced and widely used in controlling this pest in China [19]. Monitoring and early detection of shifts in resistance or susceptibility status is important for prompt adoption of alternative control measures of this pest [68].

## 11. CONCLUSION

Brown planthopper (*Nilaparvata lugens* Stål) is one of the important economic pest of rice that is prevalent in Asia and Pacific regions. It is a serious pest that is considered a threat to rice production in the Asia-Pacific region. Understanding the ecology and biology of this pest is a prerequisite for developing and implementing effective control measures. The control strategy that has been proven effective against brown planthopper is integrated pest management (IPM). IPM programs are usually eco-friendly and oriented towards minimum use of synthetic pesticides. The objective of reducing pesticides is to boost the activities of natural enemies and other biological control agents. Integration of host resistance, biological and cultural control are therefore recommended to manage brown planthopper.

## ACKNOWLEDGEMENTS

Grateful for the motivation from academic staff at Universitas Padjadjaran in Indonesia towards this review. Special thanks to Dr. Yusup Hidayat, Dr. Agus Susanto and Dr. Wahyu Natawigena for their inspiration and encouragement to pursue research in Pest Management.

## DISCLAIMER

The products used for this research are commonly and predominantly use products in our area of research and country. There is absolutely no conflict of interest between the authors and producers of the products because we do not intend to use these products as an avenue for any litigation but for the advancement of knowledge. Also, the research was not funded by the producing company rather it was funded by personal efforts of the authors.

## COMPETING INTERESTS

Authors have declared that no competing interests exist.

## REFERENCES

1. Grist D. The origin and history of rice. In: Rice. Longman Publishers. 1986;1-9.
2. Kennedy D. The importance of rice. Science. 2002;296:13-13.
3. Paul T, Omot N, Linibi M, et al. Urbanisation and the decline in consumption and production of indigenous vegetables in Papua New Guinea. In: XXIX international horticultural congress on horticulture: Sustaining lives, livelihoods and landscapes (IHC2014). 2014;1102:245-252.
4. Rahaman MM, Islam K, Jahan M, et al. Relative abundance of stem borer species and natural enemies in rice ecosystem at Madhupur, Tangail, Bangladesh. Journal of The Bangladesh Agricultural University. 2016;12:267-272.
5. Heong KL, Wong L, Reyes JHD. Addressing planthopper threats to Asian rice farming and food security: Fixing insecticide misuse. In: Rice planthoppers. Springer. 2015;65-76.
6. Savary S, Willocquet L, Elazegui FA, et al. Rice pest constraints in tropical Asia: Quantification of yield losses due to rice pests in a range of production situations. Plant Disease. 2000;84:357-369.
7. Nirmala B, Muthuraman P. Economic and constraint analysis of rice cultivation in Kaithal district of Haryana. Indian Research Journal of Extension Education. 2016;9:47-49.
8. Prasad Y, Prabhakar M. Pest monitoring and forecasting. Integrated pest

- management: principles and practice Oxfordshire, UK: Cabi. 2012;41-57.
9. Way M, Heong K. The role of biodiversity in the dynamics and management of insect pests of tropical irrigated rice—A review. *Bulletin of Entomological Research*. 1994;84:567-587.
  10. Jolivet P. Interrelationship between insects and plants. CRC press; 1998.
  11. Thongphak D, Promdeesan K, Hanlaoedrit C. Diversity and community structure of terrestrial invertebrates in an irrigated rice ecosystem. *International Journal of Environmental and Rural Development*. 2012;3:68-71.
  12. Reissig W. Illustrated guide to integrated pest management in rice in tropical Asia. *Int. Rice Res. Inst*; 1985.
  13. Wilby A, Thomas MB. Natural enemy diversity and pest control: Patterns of pest emergence with agricultural intensification. *Ecology Letters*. 2002;5:353-360.
  14. Wu K, Guo Y. The evolution of cotton pest management practices in China. *Annu Rev Entomol*. 2005;50:31-52.
  15. Ghahari H, Hayat R, Tabari M, et al. A contribution to the predator and parasitoid fauna of rice pests in Iran, and a discussion on the biodiversity and IPM in rice fields. *Linzer Biologische Beitrage*. 2008;40:735-764.
  16. Fahad S, Nie L, Hussain S, et al. Rice pest management and biological control. In: *Sustainable Agriculture Reviews*. Springer. 2015;85-106.
  17. Sorby K, Fleischer G, Pehu E. Integrated pest management in development: Review of trends and implementation strategies; 2003.
  18. Cheng J. Rice planthopper problems and relevant causes in China. *Planthoppers: New threats to the sustainability of intensive rice production systems in Asia*. 2009;157:178.
  19. Zhang X, Liu X, Zhu F, et al. Field evolution of insecticide resistance in the brown planthopper (*Nilaparvata lugens* Stål) in China. *Crop Protection*. 2014;58:61-66.
  20. Koya VM. Brownhopper, the destructive pest. *Kurukshetra*. 1974;22:13.
  21. Krishnaiah N, Prasad AR, Rao CR, et al. Population dynamics of rice brown planthopper, *Nilaparvata lugens* in Godavari Delta of Andhra Pradesh State. *Indian Journal of Plant Protection*. 2006;34:158.
  22. Fernando H. The brown planthopper problem in Sri Lanka. *Rice Entomol Newsl*. 1975;2:34-36.
  23. Small GJ, Hemingway J. Molecular characterization of the amplified carboxylesterase gene associated with organophosphorus insecticide resistance in the brown planthopper, *Nilaparvata lugens*. *Insect Molecular Biology*. 2000;9:647-653.
  24. Alam S, Karim A. Brown planthopper (*Nilaparvata lugens*)—a probable threat to rice cultivation in Bangladesh. In: *Second Annual Bangladesh Science Conference*; 1977.
  25. Rashid MM, Jahan M, Islam KS. Impact of nitrogen, phosphorus and potassium on brown planthopper and tolerance of its host rice plants. *Rice Science*. 2016;23:119-131.
  26. Tirawat C. Report on brown planthopper, *Nilaparvata lugens* (Stål) in Thailand. In: *International Rice Research Conference*; 1975.
  27. Uawisetwathana U, Graham SF, Kamolsukyonyong W, et al. Quantitative <sup>1</sup>H NMR metabolome profiling of Thai Jasmine rice (*Oryza sativa*) reveals primary metabolic response during brown planthopper infestation. *Metabolomics*. 2015;11:1640-1655.
  28. Ngoan N. Recent progress in rice insect research in Vietnam. In: *Proceedings of a symposium on tropical agricultural research on rice insects ministry of agriculture Tokyo, Japan*. 1971;19-24.
  29. Khoa DB, Thang BX, Liem NV, et al. Variation in susceptibility of eight insecticides in the brown planthopper *Nilaparvata lugens* in three regions of Vietnam 2015-2017. *PLoS One*. 2018;13:e0204962.
  30. Heong K. Occurrence and chemical control of rice planthoppers in Malaysia. *Rice Entomol Newsl*. 1975;3:31-32.
  31. Latif M, Omar MY, Tan SG, et al. Biochemical studies on malathion resistance, inheritance and association of carboxylesterase activity in brown planthopper, *Nilaparvata lugens* complex in Peninsular Malaysia. *Insect Science*. 2010;17:517-526.
  32. Lee J. Biology and control of the brown planthopper (*Nilaparvata lugens* S) in Korea. *The Rice Brown Planthopper*. 1977;199-213.



33. Park J, Kwon W, Park J, et al. The complete mitochondrial genome of *Nilaparvata lugens* (stål, 1854) captured in Korea (Hemiptera: Delphacidae). Mitochondrial DNA Part B. 2019;4:1674-1676.
34. Miyashita K. Outbreaks and population fluctuations of insects, with special reference to agricultural insect pests in Japan. Bull National Sust Agric Sci Ser C. 1963;15:99-170.
35. Matsumura M, Sanada-Morimura S, Otuka A, et al. Insecticide susceptibilities in populations of two rice planthoppers, *Nilaparvata lugens* and *Sogatella furcifera*, immigrating into Japan in the period 2005–2012. Pest Management Science. 2014;70:615-622.
36. Kalshoven LGE. Plagen van de cultuurgewassen in Indonesië; 1950.
37. Diptaningsari D, Trisyono YA, Purwantoro A, et al. Inheritance and realized heritability of resistance to imidacloprid in the brown planthopper, *Nilaparvata lugens* (Hemiptera: Delphacidae), from Indonesia. Journal of Economic Entomology. 2019;112:1831-1837.
38. Varca AS, Feuer R. The brown planthopper and its biotypes in the Philippines. Plant Prot News. 1976;5:35-38.
39. Otuka A, Watanabe T, Suzuki Y, et al. A migration analysis of the rice planthopper *Nilaparvata lugens* from the Philippines to East Asia with three-dimensional computer simulations. Population Ecology. 2005;47:143-150.
40. Hinckley AD. Ecology and control of rice planthoppers in Fiji. Bulletin of Entomological Research. 1963;54:467-481.
41. Hale P, Hale J. Insect pests of rice in the New Guinea Islands. Rice Entomology Newsletter; 1975.
42. Powell K. Antimetabolic effects of plant lectins towards nymphal stages of the planthoppers *Tarophagous proserpina* and *Nilaparvata lugens*. Entomologia Experimentalis et Applicata. 2001;99:71-78.
43. MacQuillan M. Influence of crop husbandry on rice planthoppers (Hemiptera; Delphacidae) in the Solomon Islands. Agro-Ecosystems. 1974;1:339-358.
44. Gurr GM, Liu J, Read DM, et al. Parasitoids of Asian rice planthopper (Hemiptera: Delphacidae) pests and prospects for enhancing biological control by ecological engineering. Annals of Applied Biology. 2011;158:149-176.
45. Heong KL. Are planthopper problems caused by a breakdown in ecosystem services. Planthoppers: New threats to the sustainability of intensive rice production systems in Asia. 2009;221-232.
46. Dyck V, Thomas B. The brown planthopper problem. Brown planthopper: Threat to rice production in Asia. 1979;3:17.
47. Bottrell DG, Schoenly KG. Resurrecting the ghost of green revolutions past: The brown planthopper as a recurring threat to high-yielding rice production in tropical Asia. Journal of Asia-Pacific Entomology. 2012;15:122-140.
48. Heong K. Biodiversity, ecosystem services and pest management. In: Second International Plantation Industry Conference and Exhibition (IPICEX), Shah Alam. 2008;18-21.
49. Roger PA, Heong K, Teng P. Biodiversity and sustainability of wetland rice production: Role and potential of microorganisms and invertebrates. Casafa Rep. 1991;4:117-136.
50. Lu ZX, Heong KL, Yu XP, et al. Effects of plant nitrogen on ecological fitness of the brown planthopper, *Nilaparvata lugens* Stal. in rice. Journal of Asia-Pacific Entomology. 2004;7:97-104.
51. Catindig J, Arida G, Baehaki S, et al. Situation of planthoppers in Asia. Planthoppers: New threats to the sustainability of intensive rice production systems in Asia. 2009;191-220.
52. Rashid MM, Jahan M, Islam KS. Effects of nitrogen, phosphorous and potassium on host-choice behavior of brown planthopper, *Nilaparvata lugens* (Stål) on Rice Cultivar. Journal of Insect Behavior. 2017b;30:1-15.
53. Palmer L, Rao P. Grassy stunt, ragged stunt and tungro diseases of rice in Indonesia. International Journal of Pest Management. 1981;27:212-217.
54. Cabauatan PQ, Cabunagan RC, Choi IR. Rice viruses transmitted by the brown planthopper *Nilaparvata lugens* Stål. Planthoppers: New threats to the sustainability of intensive rice production systems in Asia. 2009;357-368.
55. Jegadeeswaran M, Anandakumar C, Maheswaran M. Principal component analysis of morphological traits related to brown planthopper (BPH)(*Nilaparvata*

- lugens* Stål.) resistance in 442 accessions of rice (*Oryza sativa* L.). Trends in Biosciences. 2014;7:2253-2256.
56. Pham VD, Cabunagan R, Cabauatan P, et al. Yellowing syndrome of rice: Etiology, current status and future challenges. Omonrice. 2007;94-101.
  57. Higley LG, Pedigo LP. Economic injury level concepts and their use in sustaining environmental quality. Agriculture, Ecosystems and Environment. 1993;46:233-243.
  58. Altieri MA. The ecological role of biodiversity in agroecosystems. In: Invertebrate biodiversity as bioindicators of sustainable landscapes. Elsevier. 1999;19-31.
  59. Altieri M, Nicholls C. Biodiversity and pest management in agroecosystems. CRC Press; 2004.
  60. Prokopy R, Kogan M. Integrated pest management. In: Encyclopedia of insects. Elsevier. 2009;523-528.
  61. Singh A, Kumar R, Das D, et al. Economic and environmental impact of integrated pest management in paddy a case study of Haryana. Agricultural Economics Research Review. 2004;17:69-84.
  62. Palis FG. The role of culture in farmer learning and technology adoption: A case study of farmer field schools among rice farmers in central Luzon, Philippines. Agriculture and Human Values. 2006;23:491-500.
  63. Chen CN. Economic thresholds of the brown planthopper in Taiwan. 中華昆蟲 4, ap4+. 1984;35-38.
  64. Cheng C. Determination of the economic-injury levels of the brown planthopper in Taiwan. II. The population levels of *Nilaparvata lugens* in relation to yield loss of rice. Natl Sci Counc Monthly (ROC). 1979;7:1098-1102.
  65. Chen C, Cheng C. The population levels of *Nilaparvata lugens* (Stal) in relation to the yield loss of rice. Plant Protection Bulletin, Taiwan. 1978;20:197-209.
  66. Liu XD, Sun QH. Early assessment of the yield loss in rice due to the brown planthopper using a hyperspectral remote sensing method. International Journal of Pest Management. 2016;62:205-213.
  67. Nagata T. Monitoring on insecticide resistance of the brown planthopper and the white backed planthopper in Asia. Journal of Asia-Pacific Entomology. 2002;5:103-111.
  68. Wang Y, Chen J, Zhu YC, et al. Susceptibility to neonicotinoids and risk of resistance development in the brown planthopper, *Nilaparvata lugens* (Stål)(Homoptera: Delphacidae). Pest Management Science: Formerly Pesticide Science. 2008;64:1278-1284.
  69. Rajna S, Chander S. Sequential sampling plan for rice planthoppers with incorporation of predator effect. Journal of Biological Control. 2013;27:10-17.
  70. Okada T. Taxonomic characters for identification of the rice brown planthopper (*Nilaparvata lugens*) and its related species in the Asian and Pacific region. Taxonomic characters for identification of the rice brown planthopper (*Nilaparvata lugens*) and its related species in the Asian and Pacific region. 1977;1-25.
  71. Mochida O, Okada T. Taxonomy and biology of *Nilaparvata lugens* (Hom., Delphacidae). Brown planthopper: Threat to rice production in Asia. 1979;21743.
  72. Fennah RG, Fennah R. Delphacidae (Homoptera, Fulgoroidea) from the Sudan Republic. Suomen Hyönteistieteellinen Seura; 1969.
  73. Denno RF, Olmstead KL, McCLOUD ES. Reproductive cost of flight capability: A comparison of life history traits in wing dimorphic planthoppers. Ecological Entomology. 1989;14:31-44.
  74. Riley J, Xia-Nian C, Xiao-Xi Z, et al. The long-distance migration of *Nilaparvata lugens* (Stål)(Delphacidae) in China: Radar observations of mass return flight in the autumn. Ecological Entomology. 1991;16:471-489.
  75. Xue J, Zhou X, Zhang CX, et al. Genomes of the rice pest brown planthopper and its endosymbionts reveal complex complementary contributions for host adaptation. Genome Biology. 2014;15:1-20.
  76. Jena K, Jeung J, Lee J, et al. High-resolution mapping of a new brown planthopper (BPH) resistance gene, Bph18 (t), and marker-assisted selection for BPH resistance in rice (*Oryza sativa* L.). Theoretical and Applied Genetics. 2006;112:288-297.
  77. Reddy BN, Lakshmi VJ, Maheswari T, et al. Studies on antibiosis and tolerance mechanism of resistance to brown planthopper, *Nilaparvata lugens* (Stal)(Hemiptera: Delphacidae) in the

- selected rice entries. The Ecoscan. 2016;10:269-275.
78. Baehaki S. Perkembangan biotipe hama wereng coklat pada tanaman padi. IPTEK Tanaman Pangan. 2012;7.
  79. Kisimoto R, Sogawa K, Drake V, et al. Insect migration: Tracking resources through space and time. by VA Drake and AG Gatehouse, Cambridge University Press, New York, NY, USA. 1995;31-66.
  80. Mochida O. On oviposition in the brown planthopper, *Nilaparvata lugens* (Stål)(Hom., Auchenorrhyncha) II. The number of eggs in an egg group, especially in relation to the fecundity. Japanese Journal of Applied Entomology and Zoology. 1964;8.
  81. Lei HC, Wang C. Studies on *Nilaparvata lugens* Stal in Hunan. Acta Oeconomico-Entomologica Sinica. 1958;1:283-313.
  82. Mochida O, Suryana T, Wahyu A. Recent outbreaks of the brown planthopper in Southeast Asia (with special reference to Indonesia). In: Seminar on the Rice Brown Planthopper Tokyo (Japan). 5 Oct 1976; 1977.
  83. Dyck V, Misra B, Alam S, et al. Ecology of the brown planthopper in the tropics. Brown planthopper: Threat to rice production in Asia. 1979;61-98.
  84. Otake A, Hokyo N. Rice plant-and leafhopper incidence in Malaysia and Indonesia-report of a research tour January to March 1976; 1976.
  85. Nasu S. Rice leafhoppers. The Major Insect Pests of the Rice Plant. 1967;493-523.
  86. Grist DH, Lever RJA. Pests of rice. London & Harlow, Longmans, London; 1969.
  87. Nasu S. Vectors of rice viruses in Asia. The virus diseases of the rice plant. 1969;93-109.
  88. Misra B, Israel P. Leaf and plant hopper problems in high yielding varieties of rice. J Ass Rice Res Workers; 1970.
  89. Pathak M. Ecology of common insect pests of rice. Annual Review of Entomology. 1968;13:257-294.
  90. Dyck V. Field control of the brown planthopper, *Nilaparvata lugens* in the tropics. Rice Entomol Newsl. 1974;1:22-24.
  91. Stapley J. The problem of the brown planthopper (*Nilaparvata lugens*) on rice in the Solomon Islands. Rice Entomol Newsl. 1975;2:37.
  92. Stapley J. The brown planthopper and *Cyrtorhinus* spp. Predators in the Solomon Islands. Rice Entomology Newsletter. 1976;15-16.
  93. Ho H, Liu T. Ecological investigation on brown planthopper in Taichung District. Plant Protection Bulletin, Taiwan. 1969;11:33-42.
  94. Soehardjan M, Leeuwangh J, Houten At. Notes on the occurrence of rice stem borer, gallmidge, leafhoppers and planthoppers in Java during the 1970 dry season. Contrib Cent Res Inst Agric Bogor; 1973.
  95. Calora F. On the recent outbreaks of brown planthoppers *Nilaparvata lugens* and the grassy stunt virus disease of rice in Laguna [Philippines]. In: 5 National Conference of the Pest Control Council of the Philippines, Davao City (Philippines), 8 May 1974. PCCP; 1974.
  96. Mochida Q, Tatang S. Outbreaks of planthoppers (and grassy stunt) in Indonesia, during the wet season 1974-75. In: International Rice Research Conference, College, Laguna (Philippines), 21 Apr 1975. IRRI; 1975.
  97. Cendana S. Insect pests of rice in the Philippines; 1967.
  98. Kulshreshtha J, Anjaneyulu A, Padmanabhan S. Disastrous brown planthopper attack in Kerala. Indian Farming; 1974.
  99. Abraham C, Nair M. The brown planthopper outbreaks in Kerala, India. Rice Entomol Newsl. 1975;2:36.
  100. Bae SH, Pathak M. Life history of *Nilaparvata lugens* (Homoptera: Delphacidae) and susceptibility of rice varieties to its attacks. Annals of the Entomological Society of America. 1970;63:149-155.
  101. Hoppe A. The brown planthopper. Rat Fighter. 1973;7:38-39.
  102. Narayanasamy P. Ecology and control of sap-feeding insects of the rice crop (*Oryza sativa* L.). Rice Entomology Newsletter. 1975;2:42.
  103. Bae S, Pathak M. A mirid bug, *Cyrtorhinus lividipennis* Reuter, predator of the eggs and nymphs of the brown planthopper. Int Rice Comm Newsl. 1966;15:33-36.
  104. Kalode M, Krishna T. Varietal resistance to brown planthopper in India. Brown planthopper: Threat to rice production in Asia. 1979;187-199.

105. Krishnaiah N. A global perspective of rice brown planthopper management II -after green revolution Era. *Molecular Entomology*. 2014;5.
106. Zhu P, Lu Z, Heong K, et al. Selection of nectar plants for use in ecological engineering to promote biological control of rice pests by the predatory bug, *Cyrtorhinus lividipennis*, (Heteroptera: Miridae). *PLoS One*. 2014;9:e108669.
107. Stanley J, Preetha G. Pesticide toxicity to arthropod predators: Exposure, toxicity and risk assessment methodologies. In: *Pesticide toxicity to non-target organisms*. Springer. 2016;1-98.
108. Ooi P, Shepard B. Predators and parasitoids of rice insect pests. *Biology and Management of Rice Insects*. 1994;585-612.
109. Jaipal S, Malik R, Yadav A, et al. IPM issues in zero-tillage system in rice-wheat cropping sequence. *Technical Bulletin*. 2005;8:32.
110. Chiu SC. Biological control of the brown planthopper. *Brown planthopper: Threat to rice production in Asia*. 1979;335-355.
111. Lou YG, Zhang GR, Zhang WQ, et al. Biological control of rice insect pests in China. *Biological Control*. 2013;67:8-20.
112. Lou YG, Zhang GR, Zhang WQ, et al. Reprint of: Biological control of rice insect pests in China. *Biological Control*. 2014;68:103-116.
113. Sigsgaard L. Early season natural biological control of insect pests in rice by spiders-and some factors in the management of the cropping system that may affect this control. *European Arachnology*. 2000;57-64.
114. Zhong-Xian L, Villareal S, Xiao-ping Y, et al. Biodiversity and dynamics of planthoppers and their natural enemies in rice fields with different nitrogen regimes. *Rice Science*. 2006;13:218-226.
115. Settle WH, Ariawan H, Astuti ET, et al. Managing tropical rice pests through conservation of generalist natural enemies and alternative prey. *Ecology*. 1996;77:1975-1988.
116. Choi SY, Brady N. Screening methods and sources of varietal resistance. *NC Brady*. 1979;171-185.
117. Oka IN. Cultural control of the brown planthopper. *Brown planthopper: Threat to rice production in Asia*. 1979;357-369.
118. Kaneda C, Kisimoto R. Status of varietal resistance to brown planthopper in Japan. *Brown Planthopper: Threat to Rice Production in Asia*. 1979;209-218.
119. Song YH, Choi SY, Park JS. Studies on the resistance of Tong-il Variety (IR-667) to brown planthopper, *Nilaparvata lugens* Stal. *Korean Journal of Applied Entomology*. 1972;11:61-68.
120. Cheng C, Chang W. Studies on varietal resistance to the brown planthopper in Taiwan. *Brown planthopper: Threat to rice production in Asia*. 1979;251-271.
121. Pongprasert S, Weerapat P. Varietal resistance to the brown planthopper in Thailand. *International rice research institute (eds) Brown planthopper: Threat to rice production in Asia*, International Rice Research Institute, Los Baños, Laguna, The Philippines. 1979;273-282.
122. Harahap Z. Breeding for resistance to brown planthopper and grassy stunt virus in Indonesia. *Brown planthopper: Threat to rice production in Asia*. 1979;201-208.
123. Mochida O, Heinrichs E. Strategies for the development of an integrated approach to rice brown planthopper control. *Rice research strategies for the future; international rice research institute: Los Baños, Philippines*. 1982;99.
124. Heinrichs E, Mochida O. From secondary to major pest status: The case of insecticide-induced rice brown planthopper, *Nilaparvata lugens*, resurgence. *Protection Ecology*. 1984;7:201-218.
125. Hirabayashi H, Ogawa T. RFLP mapping of Bph-1 (brown planthopper resistance gene) in rice. *Japanese Journal of Breeding*. 1995;45:369-371.
126. Cha YS, Ji H, Yun DW, et al. Fine mapping of the rice Bph1 gene, which confers resistance to the brown planthopper (*Nilaparvata lugens* Stal), and development of STS markers for marker-assisted selection. *Molecules & Cells (Springer Science & Business Media BV)*. 2008;26.
127. Rashid M, Ahmed N, Jahan M, et al. Higher fertilizer inputs increase fitness traits of brown planthopper in rice. *Scientific Reports*. 2017a;7:1-16.
128. Clark LR, Geier PW, Hughes R, et al. The ecology of insect populations in theory and practice. *The Ecology of Insect Populations in Theory and Practice*; 1967.
129. Mochida O, Tatang S. Occurrence of the brown planthopper, *Nilaparvata lugens* (Hom., Delphacidae), on rice in Indonesia. *Rice Entomology Newsletter*; 1976.

130. Kiritani K. Pest management in rice. *Annual Review of Entomology*. 1979;24:279-312.
131. Baliddawa C. Plant species diversity and crop pest control. *International Journal of Tropical Insect Science*. 1985;6:479-487.
132. lamba K, Homband V. Intercropping of Pak choi (*Brassica rapa chinensis*) with Marigold flower (*Tagetes erecta* L.) and Onion (*Allium cepa* L.) to control foliar pests. *Journal of Entomology and Zoology Studies*. 2020;8:731-737.
133. Garrood WT, Zimmer CT, Gorman KJ, et al. Field-evolved resistance to imidacloprid and ethiprole in populations of brown planthopper *Nilaparvata lugens* collected from across South and East Asia. *Pest Management Science*. 2016;72:140-149.
134. Wu SF, Zeng B, Zheng C, et al. The evolution of insecticide resistance in the brown planthopper (*Nilaparvata lugens* Stål) of China in the period 2012–2016. *Scientific Reports*. 2018;8:1-11.
135. Zhang X, Liao X, Mao K, et al. Insecticide resistance monitoring and correlation analysis of insecticides in field populations of the brown planthopper *Nilaparvata lugens* (stål) in China 2012–2014. *Pesticide Biochemistry and Physiology*. 2016;132:13-20.
136. Hua Wang Y, Fen Gao C, Cheng Zhu Y, et al. Imidacloprid susceptibility survey and selection risk assessment in field populations of *Nilaparvata lugens* (Homoptera: Delphacidae). *Journal of Economic Entomology*. 2014;101:515-522.
137. Matsumura M, Takeuchi H, Satoh M, et al. Species-specific insecticide resistance to imidacloprid and fipronil in the rice planthoppers *Nilaparvata lugens* and *Sogatella furcifera* in East and South-east Asia. *Pest Management Science: Formerly Pesticide Science*. 2008;64:1115-1121.
138. Heckel DG. Insecticide resistance after silent spring. *Science*. 2012;337:1612-1614.
139. Sparks TC, Nauen R. IRAC: Mode of action classification and insecticide resistance management. *Pesticide Biochemistry and Physiology*. 2015;121:122-128.

© 2021 *lamba and Dono*; This is an Open Access article distributed under the terms of the Creative Commons Attribution License (<http://creativecommons.org/licenses/by/4.0>), which permits unrestricted use, distribution, and reproduction in any medium, provided the original work is properly cited.

*Peer-review history:*  
The peer review history for this paper can be accessed here:  
<https://www.sdiarticle4.com/review-history/71341>