


ORIGINAL ARTICLE

Open Access



Identification of spontaneous mutation for broad-spectrum brown planthopper resistance in a large, long-term fast neutron mutagenized rice population

Wintai Kamolsukyeunyong¹, Siriphat Ruengphayak², Pantharika Chumwong¹, Lucia Kusumawati¹, Ekawat Chaichoompu^{2,3}, Watchareewan Jamboonsri¹, Chatree Saensuk², Kunyakarn Phoonsiri², Theerayut Toojinda^{1,4} and Apichart Vanavichit^{1,2,5*} 

Abstract

Background: The development of rice varieties with broad-spectrum resistance to insect pests is the most promising approach for controlling a fast evolving insect pest such as the brown planthopper (BPH). To cope with rapid evolution, discovering new sources of broad-spectrum resistance genes is the ultimate goal.

Results: We used a forward genetics approach to identify BPH resistance genes in rice (*Oryza sativa* L.) using double digest restriction site-associated DNA sequencing (ddRADseq) for quantitative trait loci (QTL)-seq of the backcross inbred lines (BILs) derived from a cross between the BPH-susceptible cultivar KDML105 and BPH-resistant cultivar Rathu Heenati (RH). Two major genomic regions, located between 5.78–7.78 Mb (QBPH4.1) and 15.22–17.22 Mb (QBPH4.2) on rice chromosome 4, showed association with BPH resistance in both pooled BILs and individual highly resistant and susceptible BILs. The two most significant candidate resistance genes located within the QBPH4.1 and QBPH4.2 windows were lectin receptor kinase 3 (*OsLecRK3*) and sesquiterpene synthase 2 (*OsSTPS2*), respectively. Functional markers identified in these two genes were used for reverse screening 9323 lines of the fast neutron (FN)-mutagenized population developed from the BPH-susceptible, purple-pigmented, *indica* cultivar Jao Hom Nin (JHN). Nineteen FN-mutagenized lines (0.24%) carried mutations in the *OsLecRK3* and/or *OsSTPS2* gene. Among these mutant lines, only one highly resistant line (JHN4) and three moderately resistant lines (JHN09962, JHN12005, and JHN19525) were identified using three active, local BPH populations. The 19 mutant lines together with three randomly selected mutant lines, which did not harbor mutations in the two target genes, were screened further for mutations in six known BPH resistance genes including *BPH9*, *BPH14*, *BPH18*, *BPH26*, *BPH29*, and *BPH32*. Multiple single nucleotide polymorphisms (SNPs) and insertion-deletion (Indel) mutations were identified, which formed gene-specific haplotype patterns (HPs) essential for broad-spectrum resistance to BPH in both BILs and JHN mutant populations.

(Continued on next page)

* Correspondence: vanavichit@gmail.com

¹Rice Gene Discovery and Utilization Laboratory, Innovative Plant Biotechnology and Precision Agriculture Research Team, National Center for Genetic Engineering and Biotechnology (BIOTEC), National Science and Technology Development Agency (NSTDA), Khlong Luang, Pathum Thani, Thailand

²Rice Science Center, Kasetsart University Kamphaeng Saen Campus, Nakhon Pathom, Thailand

Full list of author information is available at the end of the article

(Continued from previous page)

Conclusion: On the one hand, HPs of *OsLecRK2-3*, *OsSTPS2*, and *BPH32* determined broad-spectrum resistance to BPH among RH-derived BILs. On the other hand, in the JHN mutant population, *BPH9* together with seven significant genes on chromosome 4 played a crucial role in BPH resistance.

Keywords: Brown planthopper, BPH resistance gene, Double digest restriction site-associated DNA sequencing, QTL-seq, Single-nucleotide polymorphism, Haplotype pattern, Fast-neutron mutagenesis

Background

Rice (*Oryza sativa* L.) is an important cereal crop that feeds almost half of the world's population (Mohanty 2013), and is mostly grown in Asia (Muthayya et al. 2014). Insect pests, such as brown planthopper (BPH), white-backed hopper, green leafhopper, stem borer, and gall midge, cause severe damage to the rice crop across the world (Ane and Hussain 2016). Among these, BPH (*Nilaparvata lugens* Stål) is one of the most economically damaging insect pests of rice, and causes substantial losses in yield in the major rice growing areas in Asia each year.

During plant development from the seedling to the reproductive stage, BPH sucks the phloem sap, causing whole plant senescence called hopper burn (Lou et al. 2005; Dale 1994). A significant threat to rice production was reported in the early 1970s, when new high yielding varieties and extensive use of fertilizers and pesticides caused the rapid evolution of pesticide-tolerant biotypes of insect pests. These newly introduced rice cultivars, lacking broad-spectrum resistance, exhibit short life spans. Therefore, the best approach to prolong BPH resistance is to develop rice cultivars with durable resistance against multiple BPH biotypes. More than 30 BPH resistance genes or quantitative trait loci (QTL) have been genetically mapped (Ling and Weilin 2016). However, only eight have been cloned, including *BPH14* (Du et al. 2009), *BPH26* (Tamura et al. 2014), *BPH3* (Liu et al. 2014), *BPH29* (Wang et al. 2015), *BPH 9* (Zhao et al. 2016), *BPH18* (Ji et al. 2016), *BPH32* (Ren et al. 2016), and *BPH31* (Pahalada et al. 2017).

BPH9 (LOC_Os12g37290) is located on chromosome 12, and is a highly diversified and complex BPH resistance gene, with a complex allelic composition called allelotype (Zhao et al. 2016). Four allelotypes of this locus, including *BPH1/9-1*, *-2*, *-7*, and *-9*, have been identified from eight rice varieties. The first widely used allelotype, *BPH1/9-1*, was identified in the rice cultivar Mudgo (*BPH1*) (Pathak et al. 1969) and three wild rice species, *Oryza officinalis* (*BPH10*) (Thi Lang and Chi Buu 2003), *O. australiensis* (*BPH18*) (Jena et al. 2006), and *O. minuta* (*BPH21*) (Rahman et al. 2009). Two members of the allelotype *BPH 1/9-2* were derived from rice cultivars ASD7 (*BPH2*) (Jena and Kim 2010) and

ADR52 (*BPH26*) (Cheng et al. 2013). The last two allelotypes, *BPH1/9-7* and *BPH1/9-9* (known as *BPH7* and *BPH9*, respectively) were identified from the *indica* rice cultivars T12 and Pokkali, respectively (Qiu et al. 2014; Zhao et al. 2016). The coding sequence (CDS) of *BPH9* (Pokkali) is 4042 bp (GenBank accession no. KU216220), and encodes a 1206 amino acid (aa) protein (GenBank accession no. ANC90313). The *BPH9* gene carries 520 polymorphic sites and 21 haplotypes in 117 rice varieties and landraces (Zhao et al. 2016).

Rathu heenati (RH), a Sri Lankan landrace, is one of the most strongest sources of durable resistance against BPH in Southeast Asia. This landrace has been widely used as a BPH resistance donor in breeding programs in the Great Mekong Sub-region, including Thailand, Cambodia, Myanmar, and Laos (Wang et al. 2012). Several BPH resistance loci have been identified in RH, including *BPH3* (Sun et al. 2005) and sesquiterpene synthase II (*OsSTPS2*) (Kamolsukyeunyong et al. 2013) on chromosome 4, and *BPH32* (Jairin et al. 2007) on chromosome 6. The *BPH3* locus has been cloned from RH, and comprises the lectin receptor kinase (*OsLecRK1-3*) gene cluster (Liu et al. 2014). The CDSs of *OsLecRK1*, 2, and 3 genes are 2442, 2436, and 2436 bp, in length, respectively (GenBank accession nos. KF748957, KF748965, and KF748973, respectively). Sequence comparison between rice varieties showing differences in BPH resistance identified 17, 7, and 31 polymorphic sites in *OsLecRK1*, *OsLecRK2*, and *OsLecRK3*, respectively (Liu et al. 2014). The CDS of the *OsSTPS2* gene cloned from RH is 1518 bp in size (GenBank accession no. KC511027), and contains a 21-bp in-frame insertion in exon 5, adding 7-aa to the encoded protein, compared with the protein sequence in the BPH susceptible variety KDML105 (Kamolsukyeunyong et al. 2013). The *BPH32* gene contained 20 single nucleotide polymorphisms (SNPs) and several insertion-deletion (Indel) mutations in the 585-bp CDS (Ren et al. 2016).

Rice varieties with durable resistance to BPH are key to sustainable rice production in Asia because of rapidly evolving BPH biotypes and high input farming practices. Natural variation in BPH resistance is limited, as rice is an obligate self-pollinating crop. Chemical and physical mutagenesis has been used to induce mutations and

create novel sources of resistance in various genotypes, which are then used as germplasm for the development of new resistant varieties. In rice, induced mutations have been reported using gamma irradiation (Till et al. 2007; Wu et al. 2005), ethyl methanesulfonate (EMS) (Wu et al. 2005), fast neutron (FN) (Wu et al. 2005; Ruengphayak et al. 2015), and ion beam (Yamaguchi et al. 2009). The effects of FN mutagenesis on structural changes in the genome have been reported in soybean (Bolon et al. 2011, 2014; Campbell et al. 2016), *Arabidopsis* (Li et al. 2002), and rice (Ruengphayak et al. 2015; Li et al. 2017). Deletions are the main structural rearrangements induced by FN mutagenesis (Bolon et al. 2011, 2014; Li et al. 2002). In soybean, FN treatment has been shown to induce chromosomal rearrangement near the target gene (Campbell et al. 2016). Induction of single nucleotide variation (SNV) by FN has been reported in the *indica* rice cultivar Jao Hom Nin (JHN) (Ruengphayak et al. 2015) and japonica rice cultivar Kitaake (Li et al. 2017). In Kitaake, SNV is the most abundant mutation, accounting for 48% of the total number of mutations, and 58% of the SNVs are located within rice genes (Li et al. 2017). Structural variation in CDSs may create useful mutations; for example, tandem duplication in the *waxy* gene of rice (Wanchana et al. 2003), structural rearrangement in *NAPI* gene in the *gnarled* trichrome mutant of

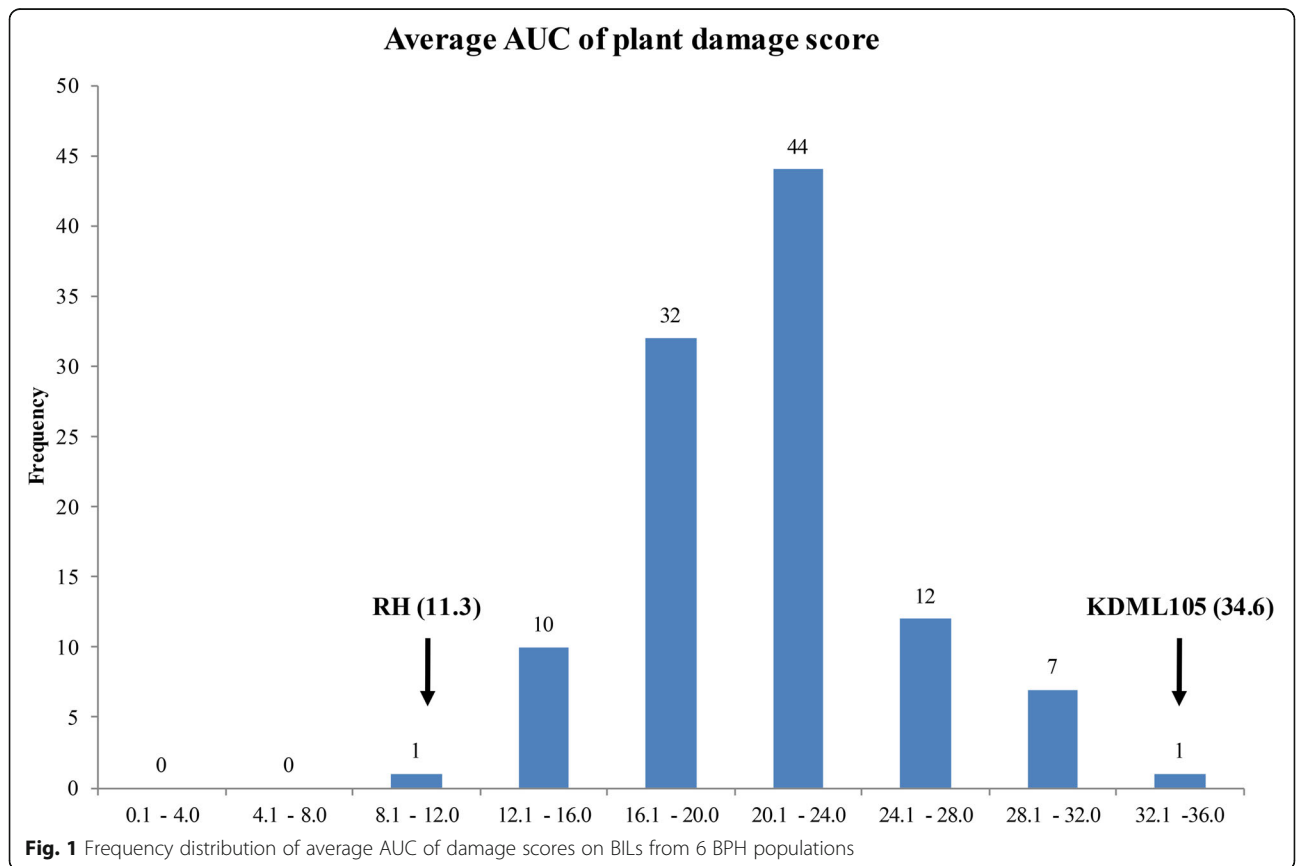
soybean (Campbell et al. 2016), and haplotype change in *OsFRO1* in a rice mutant tolerant to iron (Fe) toxicity (Ruengphayak et al. 2015).

In the current study, we combined QTL-seq (Takagi et al. 2013) and double digest restriction site-associated DNA sequencing (ddRADseq) (Peterson et al. 2012) to scan the entire rice genome for the identification of genes responsible for BPH resistance. The derived SNPs were used for reverse screening of a large FN-derived mutant population. We demonstrated that haplotype patterns (HPs) of *OsLecRK2*, *OsLecRK3*, *OsSTPS2*, and *BPH32* contributed significantly to broad-spectrum BPH resistance in RH-derived backcross inbred lines (BILs). Additionally, HPs of *BPH9* together with HPs of seven significant genes on chromosome 4 played a crucial role in broad-spectrum BPH resistance in the FN-derived mutant population.

Results

Distribution of BPH-damage AUC in BILs

Based on the average area under the curve (AUC) of BPH damage scores from six BPH populations (Additional file 1: Table S1), the distribution of BILs, KDML105, and RH are shown in Fig.1. According to the AUC scores, KDML105 (AUC = 34.6) and RH (AUC = 11.3) parental lines were marked as the most



susceptible and resistant genotypes, respectively, whereas the AUC scores of their progeny ranged from 31.8 to 13.9. On the extreme tails, 16 and 19 BILs selected for susceptible and resistance pools have the average AUCs ranged from 23.4–31.8 and 13.9–18.4, respectively (Additional file 2: Figure S1). Also, within each pool, 4 susceptible and 5 resistance BILs selected as extreme individuals have the average AUCs ranged from 28.0–34.3 and 13.9–16.0, respectively (Additional file 2: Figure S2). These selected BILs were used in the next part for QTL-seq/ddRAD analysis.

Genome-wide SNP index analysis and SNP mining in BILs

A total of 33.75 million paired-end reads were generated from the sequencing of 11 ddRADseq libraries (NCBI accession nos. SRR7851264 to 69, SRR7851271, SRR7851273 to 76), and SNPs in each library were called for QTL-seq analysis (Additional file 1: Tables S2, S3). Using a 2 Mb-sliding window for genome-wide scanning, 37,212 windows were allocated to the reference genome. Based on the maximum average Δ SNP-indexes (max Δ SNP) of individuals and pools, two QTLs for BPH resistance were mapped on genomic windows between 5.78–7.78 Mb (QBPH4.1) and 15.22–17.22 Mb (QBPH4.2), on the short and long arms of chromosome 4, respectively (Fig. 2a, b). Linkage disequilibrium analysis of polymorphic SNPs in QBPH4.1 and QBPH4.2 in the BIL population revealed three haplotype blocks (Fig. 2d). The first block covered a 396-kb genomic region containing F-box118 (LOC_Os04g11450), F-box119 (LOC_Os04g11660), resistance protein LR10 (LOC_Os04g11780), and an unknown protein (LOC_Os04g12110). The second haplotype block contained *OsLecRK3* (LOC_Os04g12580), whereas the third block contained *OsSTPS2* (LOC_Os04g27430).

A total of 107 and 94 SNPs were identified in QBPH4.1 and QBPH4.2 genomic windows, respectively. In the QBPH4.1 window, 31 SNPs were identified in 11 genes, resulting in 22 non-synonymous mutations and one premature stop codon (Table 1). In the F-box119 protein, two amino acids change from aspartic acid (D) to glutamic acid (E) and lysine (K) to asparagines (N) were found at position 253 and 279 respectively. In the resistance protein LR10, six amino acid changes were identified at positions 371 (isoleucine [I] to threonine [T]), 377 (glutamic acid [E] to aspartic acid [D]), 378 (leucine [L] to methionine [M]), 393 (valine [V] to isoleucine [I]), 398 (lysine [K] to arginine [R]), and 401 (aspartic acid [D] to glutamic acid [E]) which were capable of changing the function of LR10 protein. Twenty-two gene-specific SNPs from eight candidate genes in the QBPH4.1 window were selected for marker development. In the QBPH4.2 window, 14 SNPs and one indel were identified in 11 candidate genes including one non-synonymous SNP (serine [S] to arginine [R])

located at amino acid position 387 in the protein encoded by the terpene synthase gene (LOC_Os04g27720) (Table 2). In total, five SNPs and one indel marker were developed from the QBPH4.2 region. Additionally, the region on chromosome 6 in RH spanning 0.03–2.03 Mb, which harbors the previously cloned BPH resistance-conferring *BPH32* gene, (Ren et al. 2016), showed the max Δ SNP. This window contained nine non-synonymous mutations in eight annotated genes. Unfortunately, no SNP was identified in the *BPH32* gene using ddRADseq data (Additional file 1: Table S4). Therefore, the SNP marker identified previously in *BPH32* by Ren et al. (2016) was used as a marker in this study. All of the SNPs identified in QBPH4.1, QBPH4.2, and *BPH32* were used for QTL detection in the BIL population using single marker analysis.

Roles of *OsLecRK3* and *OsSTPS2* in broad-spectrum BPH resistance

To determine candidate genes that were exclusively involved in BPH resistance, single marker QTL analysis was performed using 28 candidate SNPs and BPH damage AUC of the selected BILs infested by five BPH populations. The results revealed a significant association between the BPH resistant QTL and *OsLecRK3*SNP in all five BPH populations with phenotypic variance ranging from 16% to 44% (Table 3). The second most important marker was the 21-bp indel in *OsSTPS2*, which accounted for 8%–30% of the total phenotypic variance in BPH resistance. Specific associations were detected between some SNPs and specific BPH populations. The SNP markers in F-Box118 protein, oxidoreductase (LOC_Os04g26910), and *BPH32* showed major associations, while SNP markers specific to the *Verticillium* wilt resistance (VWR) protein (LOC_Os04g28210) showed a minor association, specifically with the Huai Thalaeng (HTL) BPH population. With the Kamphaeng Phet (KPP) BPH population, SNP markers from the LR10 and unknown protein (LOC_Os04g12110) accounted for 4.5–7% of the total phenotypic variation, whereas terpene synthase gene explained approximately 7.6% of the total phenotypic variation in BPH resistance with the Phitsanulok (PSL) BPH population. Therefore, QTL-seq analysis revealed the two most important regions of chromosome 4, which contributed the RH-derived broad-spectrum BPH resistance in BILs.

Reverse screening of JHN mutant population for BPH resistance using SNP markers from *OsLecRK3* and *OsSTPS2*

To confirm the functional impact of SNP and 21-bp indel markers in *OsLecRK3* and *OsSTPS2* genes, respectively, we screened 9323 JHN mutant lines for polymorphisms in *OsLecRK3* and *OsSTPS2* genes. This analysis identified 11

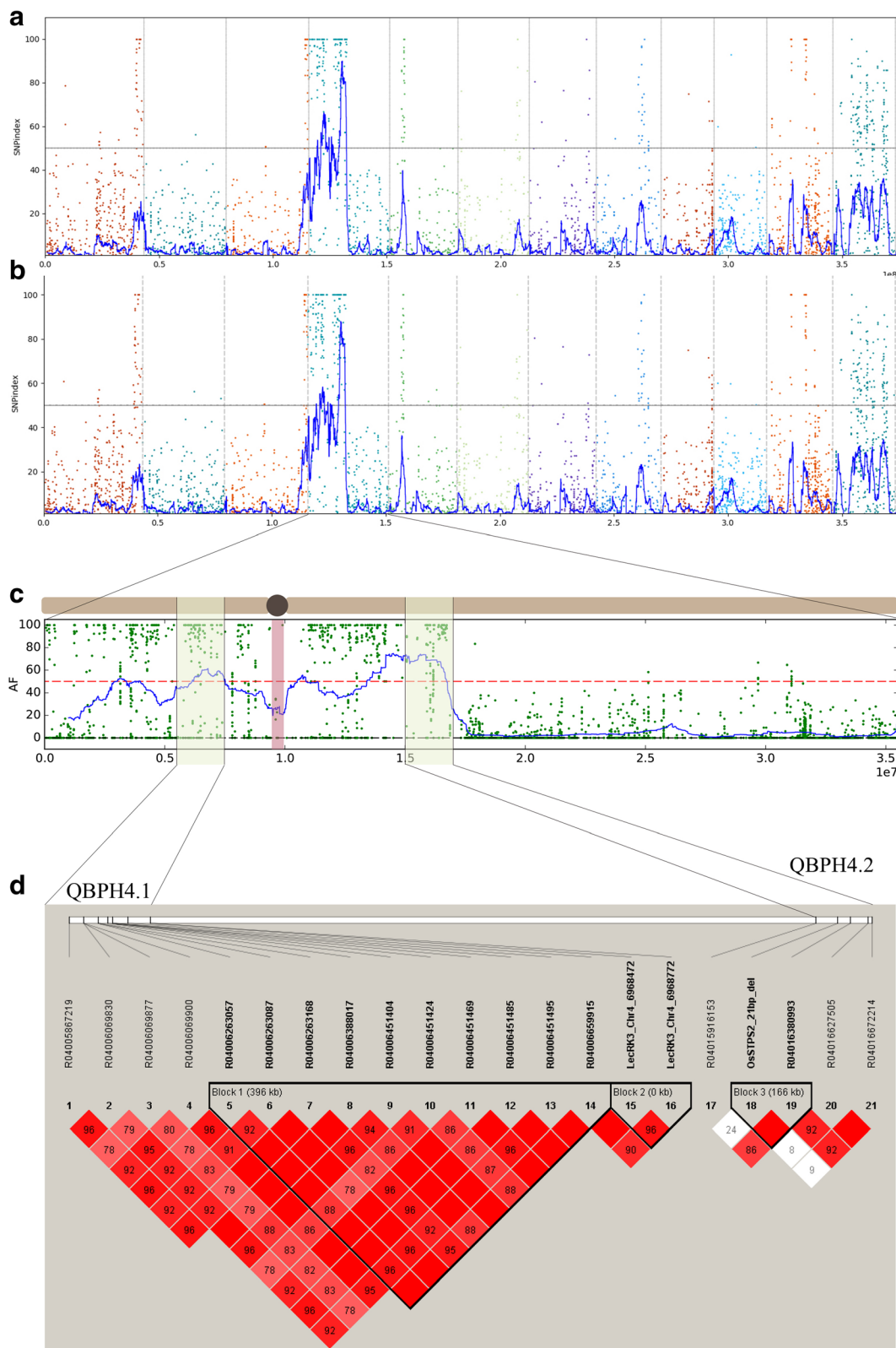


Fig. 2 (See legend on next page.)

(See figure on previous page.)

Fig. 2 The genome-wide scanning of average Δ SNP-indexes graphs plotted along the rice genome. **a** The individual extreme BILs, **b** the pooled extreme BILs. **c** Candidate QTL locations were identified on rice chromosome 4 with statistical confidence intervals under the null hypothesis of no QTL ($P < 0.05$). **d** Linkage disequilibrium (LD) plot for SNPs in the QBPH4.1 and QBPH4.2 regions. The D' values (normalized linkage disequilibrium scores) for SNPs covered the LD blocks were shown. The SNPs were genotyped in the BIL population by KASP genotyping

mutant lines carrying resistant alleles of both *OsLecRK3* and *OsSTPS2* genes (Table 4), three lines carrying the resistant allele of only *OsLecRK3*, and five lines carrying the resistant allele of only *OsSTP2*. All of these 19 mutant lines along with wild-type (WT) JHN and three WT-like mutant lines were evaluated for BPH resistance with three critical BPH populations, including Ubon Ratchathani (UBN), Ta Phraya (TPY), and Chinart (CNT) (Table 4 and Additional file 2: Figure S3). The UBN BPH population was used as the representative of BPH from the rainfed rice farming area in the Northeastern region of Thailand while the TPY and CNT BPH populations were used as the representative of BPH from the irrigated rice farming area in the Central region of Thailand.

Four mutant lines (JHN4, JHN12005, JHN19525, and JHN09962) showed resistance to BPH in the BPH infestation test (Table 4). The mutant line JHN4, like RH, showed resistance to all three BPH populations. The mutant line JHN12005 showed strong resistance to CNT and TPY populations but only moderate resistance to UBN population. The third mutant line, JHN19525, showed strong resistance to TPY and moderate resistance to CNT and UBN. The last mutant line, JHN09962, was resistant to TPY and UBN but susceptible to CNT. Interestingly, JHN19874, JHN07766, and seven other mutant lines carried the same mutations in *OsLecRK3*, and *OsSTPS2* genes as RH but were susceptible to all three BPH populations. This observation indicates that *OsLecRK3* and *OsSTPS2* genes may not fully explain the broad-spectrum resistance to BPH in the FN-induced mutants based on the polymorphic markers, or either RH or FN-mutants may harbor additional R gene besides these two genes.

Sequence analysis of the *OsLecRK3* gene, the target of reverse screening, showed that four resistant mutant lines (JHN19525, JHN09962, JHN12005, JHN4), three susceptible mutant lines (JHN19578, JHN19874, JHN11183), and RH shared nine synonymous amino acid substitutions (Fig. 3 and Additional file 3: Data S1). Furthermore, extending SNP mining into the adjacent genes (*OsLecRK1* and *OsLecRK2*) revealed similar trends as *OsLecRK3*; the amino acid sequence of resistant and susceptible lines exhibited greater homology with RH than with the WT (Fig. 3). In *OsLecRK1*, 16 amino acid substitutions, and three amino acid insertions were shared between the resistant lines, susceptible lines, and RH (Additional file 3: Data S2), whereas in *OsLecRK2*,

six amino acid substitutions were shared among these genotypes. Interestingly, novel amino acids were identified at positions 386, 407, 429, 433, 495, 502, and 534 of the *OsLecRK2* protein, with mutants differing from both the WT and RH (Additional file 3: Data S3). These seven novel amino acids, found only in *OsLecRK3*-positive mutants, ruled out the possibility of contamination or outcrossing with RH during seed propagation. In particular, amino acid change at positions 534 was located within the protein kinase domain. Greater homology was detected in the nucleotide sequence of *OsLecRK1-3* and the encoded amino acid sequence among mutants and RH compared with the WT. However, only four mutant lines were BPH resistant. Thus, we speculated that other genetic factors contributed to the BPH resistance of the mutants. Furthermore, the mutant line JHN4 was identified as a promising new BPH resistance donor for pyramiding genes to obtain broad-spectrum BPH resistance in rice.

Mutant lines carrying *BPH32* are susceptible to local BPH populations

To determine whether *BPH32* imparts BPH resistance in the JHN mutant population, the SNP in *BPH32* was used for reverse screening 9323 randomly selected mutant lines in the M_6 generation. A total of 16 mutant lines carrying the resistant allele of *BPH32* and susceptible alleles of *OsLecRK3* and *OsSTPS2* were identified. To determine if these *BPH32*-positive mutant lines showed broad-spectrum resistance, seeds of all 16 lines were retrieved from the mutant seed stock for BPH-infestation test. Unfortunately, only five lines could be germinated and exposed to three BPH populations. As a result, all the lines tested were found to be susceptible to all BPH-populations tested (Additional file 1: Table S5). To find out if the selected mutants carried new SNPs in the *BPH32*, the genomic sequence of the *BPH32* gene of JHN wild-type, selected mutants, and RH were compared. However, no new polymorphic SNPs were found (data not shown), suggesting that the gene had no contribution to BPH resistance in the mutant population. These data suggested that the genetic basis of broad-spectrum BPH resistance in the JHN mutant is complex and different from that in RH-derived BIL populations. Thus, genes other than *OsLecRK*, *OsSTPS2*, and *BPH32* likely confer resistance to BPH in the JHN mutant population.

Table 1 List of SNP identified on the QBPH4.1 sliding window (5.78–7.78 Mb) on chromosome 4. SI = SNP index; QS = QBPHS; QR = QBPHS; OR = QBPHS; IndS = BPHS; IndR = BPHR; AAC = amino acid change; (-) = synonymous variant; (+) = missense variant or stop codon

Position	LOC identifier	gene product name	KASP-SNP marker	SNP S/R	SI in QS	SI in QR	SI in IndS	SI in IndR	SNP pos / CDS length	SNP effect	AAC	AAC position/ protein length
5,806,676	LOC_Os04g10680	zinc finger, C3HC4 type domain containing protein		T/C	0.0	100.0	0.0	100.0	2071/3059	-		
5,867,185	LOC_Os04g10800	inorganic phosphate transporter		A/G	NA	NA	0.0	100.0	534/1527	-		
5,867,219	LOC_Os04g10800	inorganic phosphate transporter	R04005867219	G/C	0.0	85.0	0.0	100.0	568/1527	+	A > P	190/508
5,867,260	LOC_Os04g10800	inorganic phosphate transporter		T/C	0.9	82.9	0.0	100.0	609/1527	-		
5,867,320	LOC_Os04g10800	inorganic phosphate transporter		T/G	0.0	80.0	0.0	100.0	669/1527	-		
6,069,830	LOC_Os04g11165	gamma-thionin family domain containing protein	R04006069830	G/T	NA	NA	100.0	0.0	201/216	+	stop codon	67/71
6,069,877	LOC_Os04g11165	gamma-thionin family domain containing protein	R04006069877	A/G	0.0	81.0	0.0	81.0	154/216	+	C > R	52/71
6,069,900	LOC_Os04g11165	gamma-thionin family domain containing protein	R04006069900	A/G	0.0	81.0	0.0	81.0	131/216	+	I > T	44/71
6,263,052	LOC_Os04g11450	OsFBX118 - F-box domain containing protein		A/G	8.2	91.7	0.0	88.9	1011/1480	-		
6,263,057	LOC_Os04g11450	OsFBX118 - F-box domain containing protein	R04006263057	G/C	91.8	4.0	100.0	0.0	922/1203	+	Q > E	308/400
6,263,087	LOC_Os04g11450	OsFBX118 - F-box domain containing protein	R04006263087	A/T	8.2	92.0	0.0	90.0	892/1203	+	Y > N	298/400
6,263,168	LOC_Os04g11450	OsFBX118 - F-box domain containing protein	R04006263168	C/G	38.8	96.9	0.0	96.8	811/1203	+	V > L	271/400
6,263,172	LOC_Os04g11450	OsFBX118 - F-box domain containing protein		T/A	36.7	96.5	0.0	96.0	891/1480	-		
6,388,017	LOC_Os04g11660	OsFBX119 - F-box domain containing protein	R04006388017	C/A	16.7	97.7	16.7	97.7	837/1137	+	K > N	279/378
6,388,020	LOC_Os04g11660	OsFBX119 - F-box domain containing protein		A/G	16.7	97.7	16.7	97.7	916/1766	-		

Table 1 List of SNP identified on the QBPH4.1 sliding window (5.78–7.78 Mb) on chromosome 4. SI = SNP index; QS = QBPHS; QR = QBPHR; IndS = BPHS; IndR = BPHR; AAC = amino acid change; (–) = synonymous variant; (+) = missense variant or stop codon (Continued)

Position	LOC identifier	gene product name	KASP-SNP marker	SNP S/R	SI in QS	SI in QR	SI in IndS	SI in IndR	SNP pos / CDS length	SNP effect	AAC	AAC position / protein length
6,388,038	LOC_Os04g11660	domain containing protein		G/T	13.5	100.0	0.0	100.0	898/1766	–		
6,388,095	LOC_Os04g11660	OsFBX119 - F-box domain containing protein	R04006388095	G/C	10.8	100.0	0.0	100.0	759/1137	+	D > E	253/378
6,451,402	LOC_Os04g11780	resistance protein LR10		C/A	0.0	100.0	0.0	100.0	1110/1998	–		
6,451,404	LOC_Os04g11780	resistance protein LR10	R04006451404	T/C	0.0	100.0	0.0	100.0	1112/1998	+	I > T	371/665
6,451,423	LOC_Os04g11780	resistance protein LR10		A/T	0.0	100.0	0.0	100.0	1131/1998	+	E > D	377/665
6,451,424	LOC_Os04g11780	resistance protein LR10	R04006451424	C/A	0.0	100.0	0.0	100.0	1132/1998	+	L > M	378/665
6,451,469	LOC_Os04g11780	resistance protein LR10	R04006451469	G/A	2.9	100.0	2.9	100.0	1177/1998	+	V > I	393/665
6,451,485	LOC_Os04g11780	resistance protein LR10	R04006451485	A/G	2.9	100.0	2.9	100.0	1193/1998	+	K > R	398/665
6,451,495	LOC_Os04g11780	resistance protein LR10	R04006451495	T/G	2.9	100.0	2.9	100.0	1203/1998	+	D > E	401/665
6,455,216	LOC_Os04g11790	OsFBX120 - F-box domain containing protein		T/C	25.0	98.3	0.0	95.8	827/1461	–		
6,455,225	LOC_Os04g11790	OsFBX120 - F-box domain containing protein		C/T	75.0	1.6	100.0	4.2	818/1461	–		
6,593,508	LOC_Os04g12010	glycosyltransferase		G/T	24.3	96.6	0.0	94.5	1455/1774	–		
6,593,541	LOC_Os04g12010	glycosyltransferase		G/A	22.2	96.7	0.0	94.8	1422/1774	–		
6,659,796	LOC_Os04g12110	expressed protein		C/A	NA	NA	100.0	0.0	1818/1839	–		
6,659,820	LOC_Os04g12110	expressed protein		G/A	75.9	0.0	75.9	0.0	1794/1839	–		
6,659,826	LOC_Os04g12110	expressed protein		A/G	100.0	11.1	100.0	11.1	1788/1839	–		

Table 1 List of SNP identified on the QBPH4.1 sliding window (5.78–7.78 Mb) on chromosome 4. SI = SNP index; QS = QBPHS; QR = QBPHS; QR = QBPHS; IndS = BPHS; IndR = BPHR; AAC = amino acid change; (–) = synonymous variant; (+) = missense variant or stop codon (Continued)

Position	LOC identifier	gene product name	KASP-SNP marker	SNP S/R	SI in QS	SI in QR	SI in IndS	SI in IndR	SNP pos / CDS length	SNP effect	AAC	AAC position/ protein length
6,659,838	LOC_Os04g12110	expressed protein		A/G	100.0	11.1	100.0	11.1	1776/1839	–		
6,659,844	LOC_Os04g12110	expressed protein	R04006659844	C/A	75.9	0.0	75.9	0.0	1770/1839	+	R > S	590/612
6,659,845	LOC_Os04g12110	expressed protein	R04006659845	C/G	75.9	0.0	75.9	0.0	1769/1839	+	R > T	590/612
6,659,847	LOC_Os04g12110	expressed protein		G/T	75.5	0.0	75.5	0.0	1767/1839	–		
6,659,872	LOC_Os04g12110	expressed protein	R04006659872	C/T	88.6	5.3	100.0	7.4	1742/1839	+	C > Y	581/612
6,659,873	LOC_Os04g12110	expressed protein	R04006659873	A/T	88.6	5.3	100.0	7.4	1741/1839	+	C > S	581/612
6,659,874	LOC_Os04g12110	expressed protein		A/G	88.6	5.3	100.0	7.4	1740/1839	–		
6,659,877	LOC_Os04g12110	expressed protein		A/C	88.6	5.3	100.0	7.4	1737/1839	–		
6,659,884	LOC_Os04g12110	expressed protein	R04006659884	G/C	89.1	5.3	100.0	7.4	1730/1839	+	S > C	577/612
6,659,915	LOC_Os04g12110	expressed protein	R04006659915	T/C	88.9	5.4	100.0	7.4	1699/1839	+	I > V	567/612
6,925,203	LOC_Os04g12530	amino acid transporter family protein	R04006925203	T/G	0.0	80.0	0.0	80.0	404/612	+	D > A	135/203
6,925,208	LOC_Os04g12530	amino acid transporter family protein		C/G	NA	NA	0.0	75.0	399/612	–		
6,925,211	LOC_Os04g12530	amino acid transporter family protein		C/G	NA	NA	0.0	71.4	396/612	–		
6,968,050	LOC_Os04g12580	receptor-like protein kinase (OsLecRK3)	OsLecRK3-SNP	A/G	NA	NA	0.0	100.0	990/2346	–		
6,977,171	LOC_Os04g12600	receptor-like protein kinase		G/A	96.6	0.0	96.6	0.0	2079/2415	–		
6,978,761	LOC_Os04g12600	receptor-like protein kinase		C/T	100.0	0.0	100.0	0.0	489/2415	–		

Table 2 List of SNP identified on the QBPH4.2 sliding window (15.22–17.22 Mb) on chromosome 4. SI = SNP index; QS = QBPH5; QR = QBPHR; IndS = BPH5; IndR = BPHR; AAC = amino acid change; (–) = synonymous variant; (+) = missense variant or stop codon

Position	LOC identifier	gene product name	KASP-SNP marker	SNP S/R	SI in QS	SI in QR	SI in IndS	SI in IndR	SNP pos / CDS length	SNP effect	AAC	AAC position / protein length
15,893,411	LOC_Os04g26870	oxidoreductase		A/G	37.8	100.0	0.0	100.0	906/1053	–		
15,893,519	LOC_Os04g26870	oxidoreductase		C/T	NA	NA	0.0	71.4	1014/1053	–		
15,916,097	LOC_Os04g26910	oxidoreductase		T/C	40.8	97.3	0.0	100.0	255/1056	–		
15,916,138	LOC_Os04g26910	oxidoreductase	R04015916138	A/C	42.6	97.1	0.0	100.0	410/1470	+	E > A	99/351
15,916,153	LOC_Os04g26910	oxidoreductase	R04015916153	A/G	46.2	1.7	100.0	0.0	425/1470	+	D > G	104/351
16,044,907	LOC_Os04g27096	expressed protein		G/A	0.0	95.2	0.0	94.1	418/687	–		
16,214,690	LOC_Os04g27430	sesquiterpene synthase2	OsSTPS2_21bp_del	–/TTTA TGCCT CTGGT GTGACCA	0.0	100.0	0.0	100.0	477/1416	+	7-aa-ins	313/472
16,380,993	LOC_Os04g27720	terpene synthase	R04016380993	A/C	100.0	1.7	100.0	1.7	1161/1518	+	S > R	387/505
16,582,690	LOC_Os04g28090	MYB family transcription factor		C/T	0.0	100.0	0.0	100.0	621/2919	–		
16,586,281	LOC_Os04g28090	MYB family transcription factor		G/A	100.0	7.7	100.0	7.7	2337/2919	–		
16,627,505	LOC_Os04g28150	expressed protein	R04016627505	C/G	0.0	100.0	0.0	100.0	795/867	+	D > E	265/288
16,632,510	LOC_Os04g28160	response regulator receiver domain containing protein		T/C	0.0	100.0	0.0	100.0	705/1143	–		
16,672,214	LOC_Os04g28210	verticillium wilt disease resistance protein	R04016672214	T/G	21.9	96.2	0.0	88.9	295/3775	+	D > A	85/1034
16,713,777	LOC_Os04g28270	expressed protein		C/T	1.2	97.2	0.0	98.8	285/438	–		
16,732,393	LOC_Os04g28280	BEE 3		T/C	0.0	97.0	0.0	97.0	792/792	–		264/263

HP analysis identified significant genes for BPH resistance of mutants

Single marker analysis unequivocally revealed the molecular marker exhibiting a strong association with broad-spectrum resistance against multiple BPH populations. To investigate whether multiple SNPs determined broad-spectrum resistance, previously developed SNP markers from QBPH4.1 and QBPH4.2, together with known BPH resistance gene-specific SNP markers, were explored for HP mining. SNP markers from previously identified BPH resistance genes were developed for *BPH14* (Du et al. 2009), *BPH3* (Liu et al. 2014), *BPH26* (Tamura et al. 2014), *BPH29* (Wang et al. 2015), *BPH 32* (Ren et al. 2016), and *BPH9* (Zhao et al. 2016) (Additional file 1: Table S6). These SNP markers were used to genotype BPH resistant and susceptible mutants to identify HPs associated with broad-spectrum BPH resistance in mutant lines.

Among the 15 candidate genes identified in QBPH4.1 and QBPH4.2 windows and six known BPH resistance genes, 62 SNPs were identified, with 1–8 polymorphic SNPs per gene (Additional file 4: Table S7). No SNPs were identified in *BPH14* or *BPH32* gene, which implied that the two genes were fixed in the selected mutants. The WT HP was designated as HP1, and alternative HPs were then identified. The number of HPs varied from 2 to 10; two HPs were identified in the gene encoding inorganic phosphate transporter protein (LOC_Os04g10800), and 10 HPs were identified in the *OsLecRK3* gene. These mutants were evaluated for BPH damage AUC against three BPH populations. Therefore, it was possible to associate the HPs of candidate genes with BPH resistance (Table 5).

Single marker analysis of 21 candidate gene HPs from QBPH4.1, QBPH4.2, and BPH resistance genes revealed

Table 3 Association between markers and BPH resistance in BIL population based on linear regression analysis. Five BPH populations were used, KPP, PSL, UBN, TPY, and HTL. R² indicating the proportion of the phenotypic variation contributed by each marker

BPH	Sliding window	Marker	LOC no.	Chr	P-value	R ²	KDML105 allele		RH allele		
							count	AUC means	count	AUC means	
HTL	QBPH4.1	OsLecRK3_SNP	LOC_Os04g12580	4	< 0.001**	29.6	16	29.812	76	20.474	
		R04006263057	LOC_Os04g11450	4	0.008**	9.6	18	22.333	64	21.375	
		R04006263168	LOC_Os04h11450	4	0.048*	5.4	16	21.5	65	21.462	
	QBPH4.2	OsSTPS2_21bp_indel	LOC_Os04g27430	4	< 0.001**	17.2	11	28.909	77	20.87	
		R04015916153	LOC_Os04g26910	4	0.005**	9.2	20	21.9	62	21.177	
		R04016672214	LOC_Os04g28210	4	0.014*	7.1	18	23.167	68	22.456	
Chr6:0.03–2.03 Mb	BPH32-SNP	LOC_Os06g03240	6	0.001**	12.4	19	25.61	72	20.59		
KPP	QBPH4.1	OsLecRK3_SNP	LOC_Os04g12580	4	< 0.001**	54.9	16	23	76	13.447	
		R04006451469	LOC_Os04g11780	4	0.047*	4.5	17	14.412	66	14.773	
		R04006659915	LOC_Os04g12110	4	0.026*	6.9	10	15.7	72	14.944	
	QBPH4.2	OsSTPS2_21bp_indel	LOC_Os04g27430	4	< 0.001**	49.8	11	14.182	77	13.649	
		Chr6:0.03–2.03 Mb	Bph32-SNP	LOC_Os06g03240	6	0.793	na	na	na	na	na
PSL	QBPH4.1	OsLecRK3-SNP	LOC_Os04g12580	4	< 0.001**	21.8	16	28.5	76	21.118	
	QBPH4.2	OsSTPS2_21bp_indel	LOC_Os04g27430	4	< 0.001**	13.9	11	27.273	77	21.377	
		R04016380993	LOC_Os04g27720	4	0.011*	7.6	24	21.75	65	23.077	
	Chr6:0.03–2.03 Mb	BPH32-SNP	LOC_Os06g03240	6	0.436	na	na	na	na	na	
TPY	QBPH4.1	OsLecRK3-SNP	LOC_Os04g12580	4	< 0.001**	16.4	16	24.188	76	19.316	
	QBPH4.2	OsSTPS2_21bp_indel	LOC_Os04g27430	4	0.007**	8.5	11	23.636	77	19.532	
	Chr6:0.03–2.03 Mb	BPH32-SNP	LOC_Os06g03240	6	0.966	na	na	na	na	na	
UBN	QBPH4.1	OsLecRK3-SNP	LOC_Os04g12580	4	< 0.001**	43.7	16	27.25	76	16.908	
		R04006659915	LOC_Os04g12110	4	0.033*	6.3	10	19.7	72	18.556	
		QBPH4.2	OsSTPS2_21bp_indel	LOC_Os04g27430	4	< 0.001**	29.8	11	26.636	77	17.26
	QBPH4.2	R04015916153	LOC_Os04g26910	4	0.033*	5.3	20	17.6	62	18.339	
		R04016380993	LOC_Os04g27720	4	0.043*	4.7	24	17.542	65	19.462	
		Chr6:0.03–2.03 Mb	BPH32-SNP	LOC_Os06g03240	6	0.059	na	na	na	na	na

*Significant at $P = 0.05$ **Significant at $P = 0.001$

eight genes in which HPs were significantly associated with BPH resistance in the selected mutants, with phenotypic variance ranging from 13.5% to 83.3% (Table 5). Interestingly, the most significant association with BPH resistance was identified in HP2 of *BPH9* with phenotypic variance in BPH resistance of 83.3%, 71.0%, and 40.6% against UBN, TPY, and CNT populations, respectively. SNPs at nucleotide positions 274 (A:G, WT:mutant) (SNP id. BPH9_Ch12_22,886,067) and 258 (G:T, WT:mutant) (SNP id. BPH9_Ch12_22,886,105) in exon 1 of *BPH9* generated four HPs (Additional file 1: Table S6). The A-G and G-T HPs were associated with susceptibility and resistance, respectively, to all BPH populations. By substituting the susceptible A-G with the resistant G-T HPs, the damage reducing ratios (DRRs) were 0.53, 0.46, and 0.25 against CNT, UBN, and TPY populations, respectively (Table 5). The replacement of A-G HP with

G-T HP resulted in one amino acid substitution from arginine (R) in WT and susceptible mutants to glycine (G) in resistant mutants, as the mutation at nucleotide position 258 resulted in synonymous substitution.

The second highest impact HP was linked to the two F-Box genes, *F-Box118* and *F-Box119*. For *F-Box119*, two SNPs, resulting in non-synonymous substitutions, were identified at nucleotide positions 837 (SNP id. F-box_R04006388017) and 759 (SNP id. F-box_R04006388095) of the single exon gene, generating four HPs (Additional file 1: Table S6). These SNPs caused two amino acid substitutions from lysine (K) and aspartate (D) to asparagine (N) and glutamic acid (E), respectively. The C-G HP was associated with susceptibility, while the A-C HP was associated with resistance against TPY and H (heterozygous)-G HP was associated with resistance against CNT (Table 5).

Table 4 Genotyping data at two loci used for reverse screening of selected mutant lines and BPH damage AUC tests using 3 BPH populations. The “Ins” indicated insertion allele while “Del” indicated deletion allele of the OsSTPS2-21 bp-indel marker. Letter a, b, c, d, e, f, g indicated similarity of the traits in multiple comparison tests

	QBPH4.1	QBPH4.2	BPH damage AUC		
	OsLecRK3-SNP	OsSTPS2-21 bp-indel	CNT	TPY	UBN
RH	G	Ins	6 ^a	7 ^a	16 ^a
JHN4	G	Ins	10 ^a	8 ^a	17 ^a
JHN12005	G	Ins	13 ^a	11.33 ^{ab}	44 ^c
JHN19525	G	Ins	30 ^b	13.5 ^{ab}	41 ^c
JHN09962	G	Ins	45 ^c	22.5 ^b	27.5 ^{ab}
JHN19874	G	Ins	46 ^c	43 ^{cd}	57.67 ^{de}
JHN07766	G	Ins	47 ^c	40 ^c	61 ^{de}
JHNMT2	A	Ins	50 ^c	42 ^{cd}	56.33 ^{de}
JHN11183	G	Del	51 ^c	49 ^{cdef}	39 ^c
JHNMT1	A	Ins	51 ^c	38.33 ^c	48.67 ^d
JHN05678	G	Ins	51 ^c	47 ^{cde}	63 ^e
JHN19572	G	Ins	52 ^c	52.33 ^{defg}	57.67 ^{de}
JHN21689	G	Ins	52 ^c	59 ^{efg}	61.67 ^e
JHN16065	A	Ins	54 ^c	60.33 ^g	59 ^{de}
JHN02313	G	Del	54 ^c	61.67 ^g	60.33 ^{de}
JHN15723	A	Del	54 ^c	63 ^g	60.33 ^{de}
JHN18131	A	Del	54 ^c	59.33 ^{fg}	60.33 ^{de}
JHN	A	Del	54 ^c	63 ^g	61.67 ^e
JHN19671	A	Ins	54 ^c	63 ^g	61.67 ^e
JHN12686	A	Ins	54 ^c	63 ^g	63 ^e
JHN17767	A	Del	54 ^c	60.33 ^g	63 ^e
JHN19577	G	Ins	54 ^c	63 ^g	63 ^e
JHN19578	G	Ins	54 ^c	54 ^{defg}	63 ^{de}
JHN21688	G	Del	54 ^c	63 ^g	63 ^e

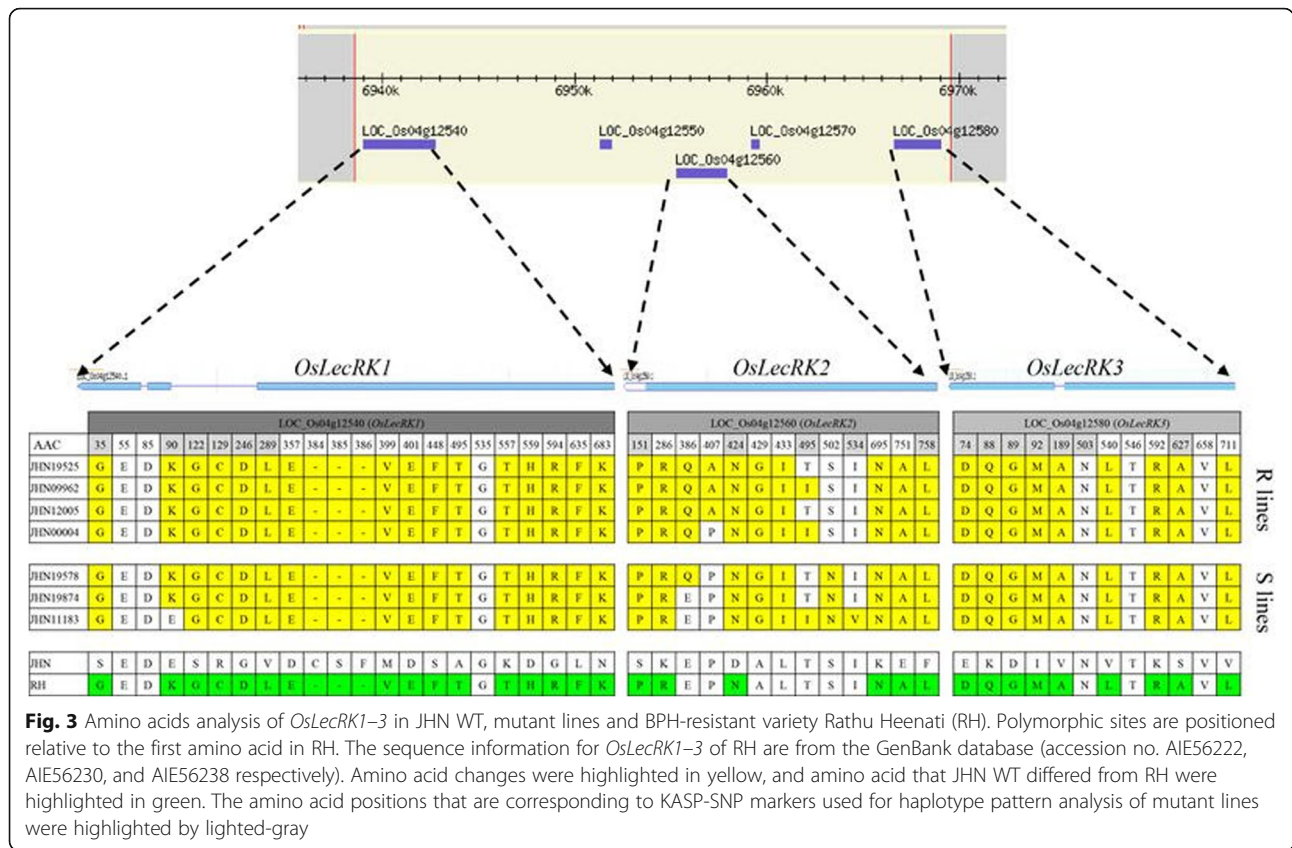
In the *F-Box118* gene, three SNPs generated three HPs (Additional file 1: Table S6). These SNPs caused three non-synonymous amino acid substitutions from glutamine (Q), asparagine (N), and leucine (L) to glutamic acid (E), tyrosine (Y), and valine (V), respectively. The C-A-C and G-T-G HPs were associated with susceptible and resistance, respectively, to the TPY population. Consequently, the DRR of haplotype substitutions in *F-Box118* and *F-Box119* genes were 0.58 and 0.50, respectively, against the TPY population (Table 5).

The third most significant HPs were specifically associated with the TPY population. Three promoter-specific SNPs and the functional 21-bp indel marker created four HPs in the *OsSTPS2* gene (Additional file 1: Table S6). The G-T-C-21 bp_insertion were associated with BPH resistance against the TPY population. The 21-bp insertion in the *OsSTPS2* gene together with the WT HP in its promoter increased resistance to BPH, with a DRR of 0.60 against the TPY population (Table 5). Other significant genes which reduced BPH damage

of TPY population were the gamma thionin protein (LOC_Os04g11165), LR10, and VWR protein with DRRs of 0.56, 0.60, and 0.69, respectively. However, a mutation in the gene encoding inorganic phosphate transporter protein increased the BPH damage AUC by DRR of 1.37 against TPY infestation.

Genes that play a dominant role in broad-spectrum BPH resistance

The *BPH9* gene was considered the most significant gene in the selected mutant lines. Four HPs were identified in mutant lines. The HP2 of *BPH9* had the most substantial impact on the DRR. Three resistant mutant lines (JHN4, JHN19525, and JHN09962) were identified as carrying *BPH9* HP2 (Table 6). The JHN4 mutant was resistant to all BPH populations tested (CNT, TPY, and UBN). On the other hand, JHN19525 showed strong resistance to TPY and moderate resistance to CNT and UBN populations, whereas JHN09962 was resistant to TPY and UBN but susceptible to CNT. Four mutant



lines, namely JHN12005, JHNMT1, JHNMT2, and JHN1183, carried HP3 at *BPH9* (Table 6); however, only JHN12005 was strongly resistant to CNT and TPY and moderately resistant to UBN. Three mutant lines carried HP4 at *BPH9* including JHN19874, JHN18131, and JHN12686 were susceptible to all BPH infestation tested.

Five mutant lines (JHN07766, JHN05678, JHN19572, JHN19577, and JHN19578) harbored HPs at significant genes on chromosome 4 similar to those in four resistant lines (JHN4, JHN12005, JHN19525, and JHN09962); however, these five mutants showed susceptibility to all BPH populations tested because their HP on *BPH9* gene was WT (HP1). This observation confirmed *BPH9* as the most important BPH resistance gene in the mutant population (Additional file 1: Table S8).

Therefore, mutations in *BPH9* as well as in inorganic phosphate transporter, gamma thionin, F-Box118, F-Box119, LR10, *OsSTPS2*, and *VWR* genes (all on chromosome 4) were crucial for obtaining broad-spectrum resistance in the JHN mutant population. RH, the donor of broad-spectrum BPH resistance, carried HP2 at *BPH32* and HP2 or HP3 at all 7 significant genes on chromosome 4. Furthermore, HPs of significant genes for five extreme resistant BILs and susceptible BILs were reported (Table 7) and showed that *OsLecRK2-3*

and *OsSTPS2* played significant roles in BPH resistance in these BILs, as every BPH resistant BIL carried HPs 3, 2, and 2 in *OsLecRK2*, *OsLecRK3*, and *OsSTPS2* respectively. On the other hand, the *BPH32* gene possibly played interactive roles depending on the HPs of *OsLecRK2-3* and the *OsSTPS2* genes conferring broad-spectrum BPH resistance in RH and RH-derived BILs. Moreover, genes encoding inorganic phosphate transporter protein, the gamma thionin protein, F-box118, F-box119, and LR10 may not play a role in the BPH resistance of BILs since the HP at these genes in the resistance BIL 423(4) was different from that in RH. Therefore, mutations in *OsLecRK2-3* and *OsSTPS2* were crucial for broad-spectrum resistance to BPH in RH and BIL populations; this suggests that breeding for broad-spectrum BPH resistance must aim to accumulate multiple BPH resistance genes from chromosomes 4, 6, and 12.

The origin of the BPH resistant JHN mutant line

To investigate whether BPH resistance found in mutant lines were induced by FN or contamination during mutant population advancement, two pieces of evidence were generated. Based on 8928 genome-wide SNPs, phylogenetic analysis clearly showed four clusters related to JHN, BILs, RH, and the japonica out-group (Fig. 4).

Table 5 Association between candidate genes with BPH resistance in mutant lines based on HPs using linear regression and ANOVA. Three BPH populations were used in this study, i.e., CNT, TPY, and UBN. KASP-SNP markers using for HP specification were indicated for each gene

BPH Gene	P value	PVE (%)	Significant HPs	Haplotype patterns	Mean AUC	count	Damage reducing ratio (DRR)
CNT F-box 119	0.039*	24.8	2	KASP-SNP R04006388017 R04006388095	36.667	3	0.688
				mutant Hetero G			
				wt C G			
BPH9_Chr12	0.005**	40.6	2	KASP-SNP R1222886067 R1222886105	53.25	12	0.535
				mutant G T			
				wt A G			
TPY inorganic phosphate transporter	0.047*	13.5	1 (WT)	KASP-SNP R04005867219	28.333	3	1.373
				mutant G			
				wt A			
gamma thionin protein	0.012*	38.2	2	KASP-SNP R04006069830 R04006069877 R04006069900	42.937	16	0.556
				mutant G G G			
				wt C			
F-box 118	0.01**	30.9	3	KASP-SNP R04006263057 R04006263087 R04006263168	31.08	8	0.581
				mutant G G G			
				wt G A A			
F-box 119	0.005**	40.4	3	KASP-SNP R04006388017 R04006388095	33.707	4	0.506
				mutant G T G			
				wt C A C			
LR10	0.046*	26.7	2	KASP-SNP R04006451404 R04006451424 R04006451469 R04006451485 R04006451495	29.332	5	0.602
				mutant A C G			
				wt C G			
OsSTPS2	0.006**	38.6	2	KASP-SNP1 OsSTPS2_SNP2 OsSTPS2_SNP3 OsSTPS2_21bp_indel	34.63	9	0.604
				mutant C A A G G			
				wt T C G A T			
Verticillium wilt resistance protein	0.020*	19.6	2	mutant G T C Insertion	36.25	12	0.688
				wt G T C deletion			
				KASP-SNP R04016672214			

Table 5 Association between candidate genes with BPH resistance in mutant lines based on HPs using linear regression and ANOVA. Three BPH populations were used in this study, i.e., CNT, TPY, and UBN. KASP-SNP markers using for HP specification were indicated for each gene (Continued)

BPH Gene	P value	PVE (%)	Significant HPs	Haplotype patterns	Mean AUC	count	Damage reducing ratio (DRR)	
BPH9_Chr12	< 0.001**	71	2	mutant T	42.764	17		
				wt G	62.112	6		
				KASP-SNP R1222886067				
				R1222886105			0.254	
UBN BPH9_Chr12	< 0.001**	83.3	2	mutant G	14.667	3		
				wt A	57.667	13		
				KASP-SNP R1222886067				
				R1222886105			0.464	
				mutant G	28.5	3		
				wt A	61.411	13		

*Significant at P = 0.05
 **Significant at P = 0.001

Table 6 HP analysis of significant genes in mutant lines. Number 1 to 10 represented HP number of each gene by which HP number 1 was specific to WT (Additional file 1: Table S6). R = resistance, MR = moderately resistance, S = susceptible

KASP marker name	inorganic phosphate transporter	gamma thionin protein	F-box 118	F-box 119	LR10	OsLecRK1	OsLecRK2	OsLecRK3	OsSTPS2	Verticillium wilt resistance protein	BPH32	BPH9	BPH-CNT	BPH-TPY	BPH-UBN
RH	1	2	3	3	2	2	3	2	2	1	2	1	R	R	R
JHN	1	1	1	1	1	1	1	1	1	1	1	1	S	S	S
JHN4	1	2	2	2	2	2	2	2	2	2	1	2	R	R	R
JHN12005	1	2	3	3	2	3	3	2	2	2	1	3	R	R	MR
JHN19525	1	2	2	3	2	2	3	2	2	2	1	2	MR	R	MR
JHN09962	1	2	3	3	2	2	2	2	2	2	1	2	S	R	R
JHN19874	1	3	2	2	3	-	-	3	2	2	1	4	S	S	S
JHN07766	1	2	2	4	2	3	4	2	2	2	1	1	S	S	S
JHNMT2	1	1	1	1	1	4	5	4	2	2	1	3	S	S	S
JHN11183	2	1	2	4	4	5	6	5	1	2	1	3	S	S	MR
JHNMT1	1	1	1	1	1	4	5	4	2	2	1	3	S	S	S
JHN05678	1	2	3	3	2	2	2	2	2	2	1	1	S	S	S
JHN19572	1	2	2	3	2	2	3	2	2	2	1	1	S	S	S
JHN21689	2	1	1	1	1	1	1	6	1	1	1	1	S	S	S
JHN16065	2	4	1	1	1	1	1	7	3	2	1	1	S	S	S
JHN02313	2	1	1	1	1	6	7	8	4	1	1	1	S	S	S
JHN15723	1	1	1	1	1	1	1	1	1	1	1	1	S	S	S
JHN18131	2	5	1	1	1	1	1	9	4	2	1	4	S	S	S
JHN19671	2	4	1	1	1	1	1	9	3	2	1	1	S	S	S
JHN12686	1	1	1	1	5	-	8	1	1	1	1	4	S	S	S
JHN17767	2	4	1	1	1	-	1	9	4	2	1	1	S	S	S
JHN19577	1	3	2	4	2	2	3	2	2	2	1	1	S	S	S
JHN19578	1	2	3	2	2	2	3	2	2	2	1	1	S	S	S
JHN21688	1	1	1	1	1	1	1	10	1	1	1	1	S	S	S

Table 7 HP analysis of significant genes in 5 extreme resistant-BILs and five extreme susceptible-BILs. Number 1 to 4 represented HP numbers of each gene by which HP number 1 was specific to JHN WT (Additional file 1: Table S6). Six BPH local populations including KPP, NAN, PSL, UBN, TPY, and HTL were used for BPH damage AUC test. - = missing data

BIL no.	inorganic phosphate transporter	gamma thionin protein	F-box 118	F-box 119	LR10	OsLecRK1	OsLecRK2	OsLecRK3	OsSTPS2	Verticillium wilt resistance protein	BPH9 BPH damage AUC						Average BPH resistance			
											KPP	NAN	PSL	UBN	TPY	HTL				
RH	1	2	3	3	2	2	3	2	2	1	2	1	123	173	103	9.7	9.7	8.3	11.3	R
UBN03078-101-342-4-147	1	-	-	3	2	2	3	2	2	1	2	1	12	12	14.3	9.3	14.7	21	13.9	R
423(4)	2	4	1	1	1	1	3	2	2	2	2	1	11.7	16.7	13.7	11	16	18.3	14.6	R
UBN03078-101-342-4-20	1	2	3	-	-	2	3	2	2	-	2	1	12	23	12.3	12	14.3	14.3	14.7	R
UBN03078-101-342-4-138	-	2	3	3	2	2	3	2	2	1	2	1	123	21	15.3	15.7	15.3	10	14.9	R
UBN03078-101-342-4-24	1	2	3	3	-	2	3	2	2	1	2	1	12	15.3	16.7	12	14.7	19.3	15	R
UBN03078-81-504-1	-	-	3	1	2	2	1	1	H	1	2	1	253	35.7	36	32.7	26.7	34.3	31.8	S
UBN03078-80-354-7	1	-	-	-	-	2	1	1	1	1	2	-	297	31	31.7	35.7	30	31.3	31.6	S
UBN03078-80-354-7	1	-	-	1	-	2	1	1	1	1	1	1	35.7	30.3	32	32	22	35.7	31.3	S
UBN03078-101-450-1	1	-	3	1	-	2	1	1	1	1	2	1	25.7	33.7	27.3	28.7	29	33	29.6	S
UBN03078-80-28-5	1	2	3	1	2	2	1	1	H	1	2	1	19	36	36	29	25.3	28	28.9	S
KDML105	2	4	1	1	1	1	1	1	1	2	1	1	34	36	36	35.3	30.3	36	34.6	S

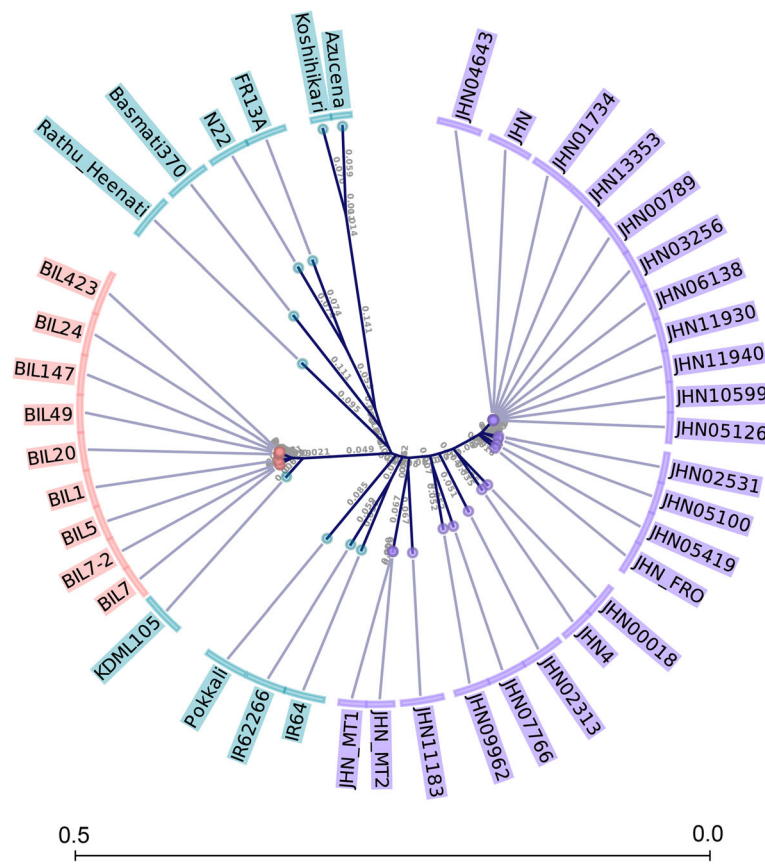


Fig. 4 Phylogenetic analysis of the mutant lines, JHN-WT, KDML105, RH, BILs, and other germplasm rice accessions. The evolutionary history was inferred using the UPGMA method

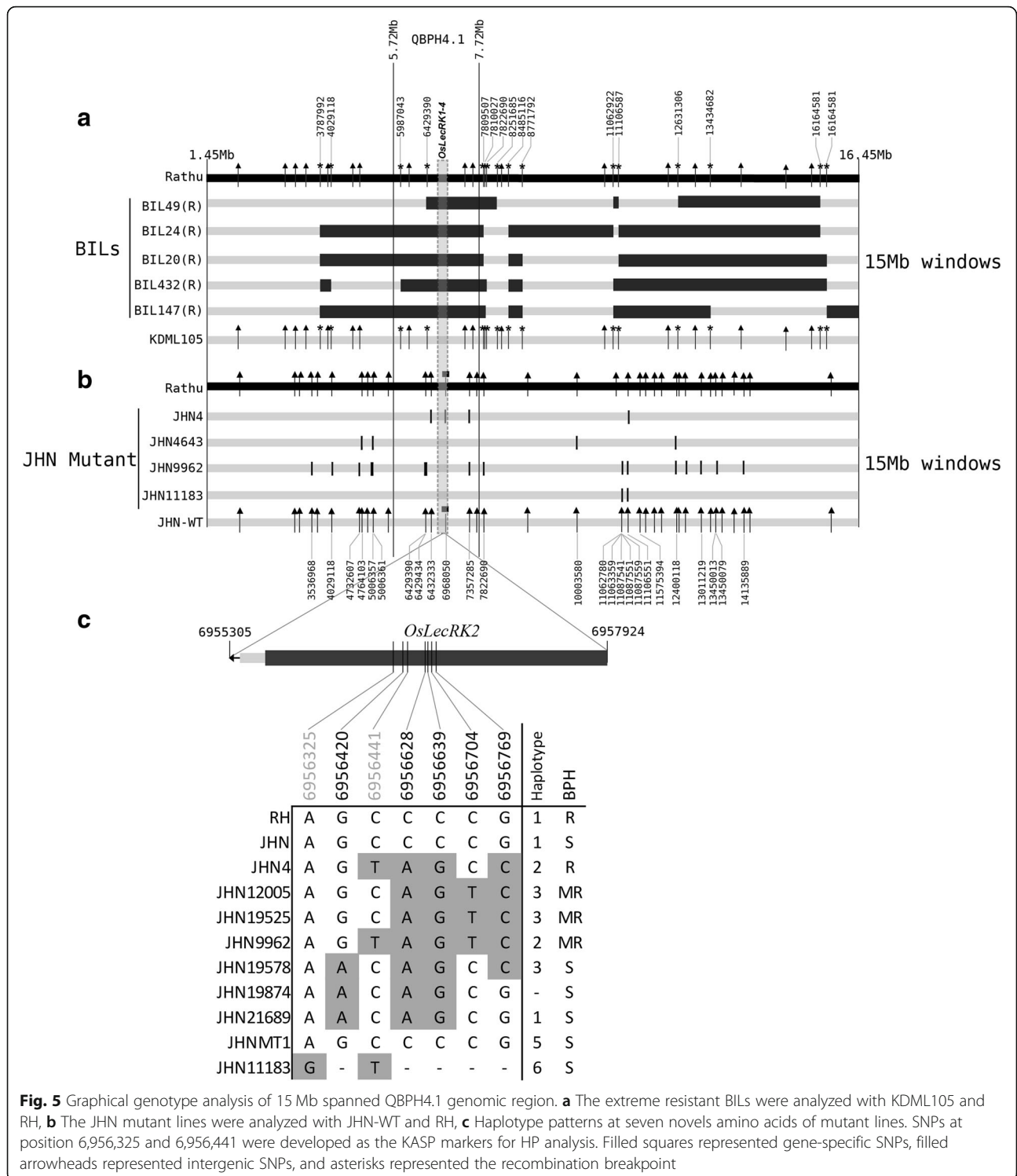
The analysis separated the BPH resistant genotypes, including JHN4, resistant BILs, RH, and Pokkali, into different clusters. This result showed that JHN4 and RH were originated independently and ruled out the possibility of the contamination of BPH resistant donors in the JHN mutant population seed stock. We further examined the genomic structure of QBPH4.1 spanning 15 Mb. Four BILs were derived by backcrossing RH with KDML105. With more than 33 informative SNP markers, several large RH-derived DNA fragments ranging from 241 kb to 5.1 Mb were detected (Fig. 5a). The total span of genomic region introgressed from RH ranged from 4.9 Mb in BIL49 to 11.7 Mb in BIL24. By contrast, very small homologous sequences were identified in the resistant (JHN4) and moderately resistant (JHN09962) mutants (Fig. 5b). Additionally, mutants carried either the same haplotype as that in JHN WT or unique HP within the *OsLecRK2* CDS (Fig. 5c). Four SNPs (positions 6,956,441; 6,956,628; 6,956,639; and 6,956,769) created novel amino acids (positions 495, 433, 429, and 386 respectively) in the *OsLecRK2* gene of JHN4, which were not found in either RH or JHN WT (Fig. 3). Together with its distinguish seed color of dark

purple, BPH resistance identified in JHN4 is not contaminated from a pollen or seed source but induced by FN.

Discussion

QTL-seq/ddRADseq identified candidate genes for BPH resistance

In this study, we successfully combined QTL-seq with ddRADseq to identify genomic region harboring BPH resistance genes from rice cultivar RH. The two genomic regions, QBPH4.1 and QBPH4.2, were identified on rice chromosome 4. For the QBPH4.1 region, two reportedly candidate genes and one cloned gene for BPH resistance were localized (Kamolsukyeunyong et al. 2013; Liu et al. 2014). These genes were LOC_Os04g11660 and LOC_Os04g11780, encoding F-box 119 and LR10 proteins (Kamolsukyeunyong et al. 2013) and LOC_Os04g12580, encoding the *OsLecRK3*, one of the members of the gene cluster (*OsLecRK1-3*) responsible for BPH resistance in RH (Liu et al. 2014). For the QBPH4.2 region, the most interesting candidate gene is LOC_Os04g27430, encoding the *OsSTPS2* gene, reportedly to play essential



roles in antixenosis resistance mechanisms against BPH (Kamolsukyeunyong et al. 2013).

The *BPH32* gene (LOC_Os06g03240) has been mapped to an area between the simple sequence repeat markers RM589 and RM588 and served as one of the primary target loci in RH as BPH resistance

donor for marker-assisted backcrossing in this BIL population (Jairin et al. 2009). Our QTL-seq analysis could not identify significant SNP with statistical confidence in this gene (Fig. 2a, b). This observation may reflect the minor effect of *BPH32* gene on BPH resistance in the RH-derived BIL population. By using

known BPH32-specific SNP (Ren et al. 2016), only 5 out of 16 BPH32-positive lines could be tested for BPH resistance in this study and found that all tested mutants were BPH susceptible (Additional file 1: Table S5). Sequence comparison confirmed that no other new mutation was found in the *BPH32* gene. As such the gene is not essential for BPH resistance in the JHN-mutagenized population.

Our results confirmed that for the durable BPH resistance rice variety RH, not only single genes/ gene cluster of *OsLecRKs*, *OsSTPS2*, or *BPH32* is essential for BPH resistance, but all of them working together in response to BPH infestation. As we shown in Table 3, SNP marker from *OsLecRK3* and indel marker from *OsSTPS2* associated with resistance to all the BPH populations tested but SNP from *BPH32* associated with resistance to only one BPH population. This result may suggest that the gene cluster *OsLecRKs*, and the gene *OsSTPS2* play a major role while the gene *BPH32* play a minor role for BPH resistance in RH. As the single marker analysis may not fully explain the effect of these genes, our HP analysis of the extreme resistance and susceptible BILs may better support this speculation. It showed that HP2 of *BPH32* is useful when HPs at *OsLecRK2*, *OsLecRK3*, and *OsSTPS2* were 3, 2, and 2 respectively (Table 7). On the other hand, HP2 of *BPH32* will not be effective when the HPs of those three genes were not in the said pattern.

Breeding for broad-spectrum resistance requires multiple gene haplotypes

Improving broad-spectrum resistance creates a solid foundation for cultivars with durable resistance against highly variable insects such as BPH. To date, at least 25 major *BPH* genes located as gene clusters on chromosomes 3, 4, 6, and 12 have been identified (Jing et al. 2017). Durable BPH resistance comprises the recognition of herbivore/damage-associated molecular patterns (HAMPs/DAMPs), and the activation of resistance genes encoding the coiled-coil nucleotide-binding leucine-rich repeat (CC-NB-LRR) domain proteins (Jing et al. 2017). To develop new rice varieties with durable BPH resistance, molecular markers must be developed for effective pyramiding of genes with strong resistance to BPH. Pyramiding *BPH14* (a CC-NB-LRR protein) and *BPH15* (a LecRK protein) enabled the successful development of a hybrid rice cultivar with broad-spectrum BPH resistance (Hu et al. 2012). In this study, two major QTLs on rice chromosome 4 (QBPH4.1 and QBPH4.2) harboring *OsLecRK* genes (Liu et al. 2014) and *OsSTPS2* genes (Kamolsukyeunyong et al. 2013), respectively, and a minor QTL harboring *BPH32* on chromosome 6 (Jairin et al. 2009; Ren et al. 2016) were shown to be involved in

broad-spectrum BPH resistance derived from RH. Pyramiding QBPH4.1, QBPH4.2, and *BPH32* into KDML105 by marker-assisted backcrossing has successfully improved broad-spectrum BPH resistance against diverged BPH populations (Vanavichit et al. 2018). Reverse genetics using the JHN mutant population revealed comprehensive mutations within the two gene clusters on chromosome 4 together with *BPH9*, enabling the induction of a mutant line exhibiting broad-spectrum BPH resistance. We have previously demonstrated the role of insect-inducible volatile factors, including sesquiterpenes and monoterpenes (Pitija et al. 2014), in antixenosis mechanisms supporting durable resistance against BPH populations. In this study, we identified the role of at least eight genes harboring 22 SNPs in broad-spectrum BPH resistance in JHN mutant lines (Table 5). These mutant lines can be used as the donor in the breeding program. However, pyramiding these eight genes or 22 SNPs into one variety using marker-assisted analysis may not be efficient. Our results showed the organization of these target SNPs into eight gene-specific HPs. These results would empower breeders to design a more efficient gene pyramiding program for developing rice cultivars with strong BPH resistance.

Genome background relationship of JHN and RH

Based on our phylogenetic analysis using SNPs derived from ddRAD, it was clearly illustrated that JHN, BILs, and RH were separated into different clusters. While RH was grouped with Basmati370, N22, and FR13A from South Asia, JHN and 22 JHN M₆ mutant lines were grouped together. Also, the RH-derived BILs were grouped with KDML105, the recipient parent. The phylogenetic analysis reflected no relationship on the genome background between RH and JHN mutants and thus harboring a different set of BPH resistant genes in selected JHN mutant lines is possible. As reported by Zhao et al. (2016), RH contained HP1 susceptible allele-type at *BPH9* gene, and we also showed that the *BPH9* (HP1) was not essential for BPH resistance in RH-derived BILs (Table 7). On the other hand, as we showed in Table 5, the HP2 of *BPH9* was associated with BPH resistance of mutants in all three BPH populations tested by reducing BPH damage as DRR of 0.535, 0.245, and 0.462 for CNT, TPY, and UBN respectively.

To confirm if the HP2 of *BPH9* is genuinely crucial for BPH resistance in JHN mutant population, the 9313-mutant-lines were screened for HP2 mutation of *BPH9* gene. As a result, there were three more mutant lines found to harbor HP2 of *BPH9* gene. These mutant lines were JHN19727, JHN22247, and JHN22995. HPs of 21 candidate gene from QBPH4.1, QBPH4.2, and BPH resistance genes of these mutant lines were

also characterized (Additional file 4: Table S7). Multiple BPH resistance of these lines will be evaluated in the future.

Rapid induction of spontaneous mutations using FN mutagenesis

FN mutagenesis typically generates deletions and chromosome rearrangements at a genome-wide scale (Gilchrist and Haughn 2010). The induction of multiple nucleotide substitutions is another essential characteristic of FN-induced mutagenesis (Belfield et al. 2012). In the model rice cultivar Kitaake, FN at 20 Gy resulted in single base substitution (SBS), deletion, insertion, translocation, and tandem duplication in the M_2 population (Li et al. 2017). Because of the high frequency of deletions, loss-of-function mutations are the primary cause of mutation detection in most FN-mutagenized populations (Li et al. 2001, 2002). In the M_{2-3} population developed from FN mutagenesis of Kitaake, SBSs account for 47.5% of all mutations (Li et al. 2017). Similarly, in JHN mutant population generated using FN mutagenesis, SBSs, deletions, and insertions accounted for 56%, 23%, and 21% of the total mutations, respectively (data not shown). These data suggest that the genetic basis of mutagenesis was similar in the JHN and Kitaake mutant populations.

Considering the high homology of the induced mutations in the QBPH4.1, QBPH4.2, and *BPH9* to RH and BPH donors, we believe that the genetic variation detected in M_6 JHN mutant population was caused by FN-induced spontaneous mutations. Our FN-mutagenized population survived two significant forces during development. First, during the early phase, a major loss of lethal mutants may have eliminated all large chromosomal rearrangements from the mutagenized population. Second, the JHN mutant population was supposedly exposed to environmental stresses during generation advancement by self-pollination in an organic paddy field in Thailand. This exposure of an FN-mutagenized population to biotic and abiotic stresses in an open paddy field may impose natural selection and homologous recombination during the prolonged generation advancement time frame. In *Arabidopsis*, abiotic stresses lead to heritable changes in the frequency of recombination, point mutation, and microsatellite mutation (Yao and Kovalchuk 2011). Additionally, the rate of homologous recombination is strongly affected by high temperature, short day length, and moderate change in environmental conditions (Boyko et al. 2005, Kloosterman et al. 2013). On an average, 9.6 spontaneous mutations per line in the M_{2-3} Kitaake rice population contained 7.6 SBSs and two small indels (Li et al. 2016). On the other hand, in the M_6 JHN mutant population, only 4% of SBSs were novel, based on the comparison with OrzaSNP database. Therefore, higher mutation rate in the JHN mutant

population could be due to 1) synergistic effects of selection against lethal mutations at the beginning of the generation advancement, 2) several generations of genetic recombination during long-term self-pollination, and 3) natural selection during generation x advancement. Spontaneous mutations may arise from local genomic lesions and repair, resulting in SBSs and single base frame shift mutations, which occur in a non-random manner at mutation hotspots throughout the genome (Maki 2002). The induced broad-spectrum BPH resistance identified in JHN4 may represent several mutation hotspots induced by FN mutagenesis and natural exposure to local BPH populations during long-term generation advancement via self-pollination.

Transposable elements (TE) are also sensitive to irradiation and environmental stresses. Stress-responsive *Arabidopsis* mutant lines acquired exapted TE-derived genes coding for new proteins, thus gaining new roles for host adaptation to stressful environments, such as high phosphate and arsenic levels, salinity, and freezing (Hoen and Bureau 2015; Joly-Lopez et al. 2017). In mutagenized Kitaake rice, FN-induce TE mutations at 58.6% compared to 25.7% in the same flanking sequence tag population (Hong and Jung 2018). It would be interesting to further explore the possibility whether FN-induced exapted TE transposition in the JHN mutant population. Thus, FN-mutagenized population contains newly induced suites of SBSs and indels as a basis for creating new genetic variability.

Conclusion

In this study, we used ddRADseq with QTL-seq analysis to identify SNPs and candidate resistance genes associated with BPH resistance in RH-derived BILs. Two major genomic regions associated with broad-spectrum BPH resistance were localized between 5.78–7.78 Mb (QBPH4.1) and 15.22–17.22 Mb (QBPH4.2), forming three linkage disequilibrium (LD) blocks on the rice chromosome 4. Twenty-one significant SNPs were organized into three haplotype blocks: two blocks in QBPH4.1 and one block in QBPH4.2. Functional markers associated with *OsLecRK3* and *OsSTPS2* genes were used for reverse screening of 9323 FN-mutagenized lines generated from the BPH susceptible rice cultivar JHN in the M_6 generation. Twenty-two mutants, including 19 identified mutants, were evaluated for BPH resistance using three active BPH local populations representing important rice growing areas in Thailand. As a result, one resistant mutant (JHN4) and three moderately resistant mutants (JHN12005, JHN09962, and JHN19525) were identified. Further screening with six known BPH resistance genes revealed that *BPH9* was dominant to *OsLecRK2-3* and *OsSTPS2* genes in reducing BPH damage in the mutant

population. On the other hand, *OsLecRK2-3*, *OsSTPS2*, and *BPH32* determined the broad-spectrum BPH resistance in RH-derived BILs. Significant gene-specific HPs involved in broad-spectrum BPH resistance in both BILs and JHN mutant population were identified. We demonstrated that long-term FN mutagenesis is a useful tool for generating not only novel but also a natural genetic variation for functional genetics and molecular breeding. Together, our data suggest that RH and the BPH-resistance mutant lines can be used as the donors in a breeding program to improve broad-spectrum resistance of rice crop against diverged BPH populations. Four gene-specific haplotypes including *OsLecRK2*, *OsLecRK3*, *OsSTPS2*, and *BPH32* are needed in the breeding program using RH as a donor. On the other hand, eight gene-specific haplotypes including *BPH9*, inorganic phosphate transporter, gamma thionin, F-Box118, F-Box119, LR10, *OsSTPS2*, and VWR genes are needed in the breeding program using the BPH-resistance mutants as a donor.

Methods

Plant materials

The BILs were developed from a cross between KDML105 and the BPH resistant donor, RH, by backcrossing using marker-assisted selection (Jairin et al. 2009). The F₁ plants were backcrossed with the recurrent parent. BPH resistant BC₁ and BC₂ plants were selected, and the BPH3-linked marker RM589 on chromosome 6 where *BPH32* was localized (Ren et al. 2016), was used to generate BC₂F₁ and BC₃F₁ generations, respectively. Two individual BC₃F₃ plants were developed from the resistant BC₃F₂ progenies ($n = 2343$) that were heterozygous at the linked marker on chromosome 6. A total of 105 BC₃F₅ BILs were generated by self-pollination of selected heterozygous BC₃F₃ plants. These BILs were infested with six local BPH populations collected from intensively irrigated and rain-fed rice production areas. BILs those were highly resistant (19 and 5 for pool and individuals respectively) and susceptible (16 and 4 for pool and individuals respectively) to BPH were identified and used for QTL-seq/ddRADseq analysis both as pools and as individuals.

The FN-mutagenized population was developed from the rice cultivar JHN, a photoperiod insensitive, semi-dwarf purple rice variety (Ruengphayak et al. 2015). Contamination of the JHN population can be readily recognized based on the purple grain color. Initially, 100,000 purified seeds derived from a panicle-to-row of a single JHN plant were treated with 33 Gy of FN by the Office of Atoms for Peace, Thailand, in 2012. Starting with the first generation (M₁), the whole mutant population was field grown; however, with the impact of FN on germination, more than 70% of the population was lost in subsequent generations. In the M₄ generation, 21,024 lines were

identified as stable. Generation advancement of the mutant population followed the same procedure as that used for the development of a random inbred line population, but with slight modifications. For each line, eight plants were randomly selected, and panicles were individually bagged with a pollination glassine envelope, before pollination, and until seed set. Seed-containing panicles were processed individually, and stored individually or as pools. In total, 9313 M₅₋₆ mutant lines were used in this study. The reverse screening was conducted using three selected polymorphic SNP/indel markers in *OsLecRK3*, *OsSTPS2*, and *BPH32* genes. The M₅ mutants that showed the same alleles as RH for these markers were selected, and M₆ families derived from these M₅ mutants were used for the BPH infestation test.

BPH populations and screening

Six local BPH populations collected from six critical rice-growing provinces in Thailand (HTL, KPP, Nan [NAN], PSL, TPY, and UBN) were used for BPH damage screening of BILs while three BPH population (CNT, TPY, and UBN) were used to evaluate the selected mutants using a modified standard seedbox screening method (SSBS) (Heinrichs et al. 1985).

The BILs and candidate mutant lines were assessed for BPH resistance at the seedling stage. Three replications of each line were under greenhouse conditions and arranged in a randomized complete block design. The second or third instar nymphs of the BPH were released on 7–10-day-old rice seedlings at the rate of 8–10 insects per plant. Seedling reaction to BPH was recorded daily as a damage score for five consecutive days, which started 7–10 days after infestation or when the susceptible check Taichung Native1 (TN1) was completely dead. The 5-day-long damage scores were presented as AUC for rating the damage caused by each BPH population. The AUC of damage rating of BPH populations were calculated using the trapezoid rule (Litsinger 1991). The AUC values were used to compare damage rating among 105 BILs and their parents. The Standard Evaluation System for Rice (SES) (International Rice Research Institute 2013) was used to estimate the initial damage caused by BPH populations on a scale of 1 to 9.

Genotyping-by-sequencing

Genotyping-by-sequencing of BILs and mutants was performed as an individual plant or as a pool of plants using ddRADseq (Peterson et al. 2012, Pootakham et al. 2015). Genomic DNA was isolated from leaves tissue using DNeasy Plant Mini Kit (Qiagen, Carlsbad, CA, USA), and quantified using NanoDrop ND-8000 Spectrophotometer (Thermo Scientific, Wilmington, DE, USA). Resistance and susceptible pools contained 200 ng of DNA from selected BPH resistant lines

($n = 19$) and susceptible lines ($n = 16$). The two pools were used for ddRADseq library construction. In addition, highly resistant lines ($n = 5$) and highly susceptible lines ($n = 4$) were sequenced individually as internal controls. Paired-end sequencing libraries (mean read length of 112 bp) with an insert size of approximately 200 bp were prepared. The DNA libraries were labeled using *Pst*I-adapters containing specific 9-bp barcodes. Libraries were sequenced using the Ion Proton PITM Chip (Life Technologies, Grand Island, NY, USA), according to the manufacturer's instructions.

QTL-seq analysis

Short sequence reads from BPH resistant and susceptible pools and extreme BILs were locally aligned to the Nipponbare reference genome (Os-Nipponbare-Reference-IRGSP-1.0 pseudo-molecules), with a fragment size of 80–300 bp, using Bowtie2 Software (Langmead and Salzberg 2012). Description of sequencing data was added by using the command line AddOrReplaceReadGroups of the Picard command line tools (<http://broadinstitute.github.io/picard/>). Sequence data were improved in the region spanning the indel polymorphisms using the Genome Analysis Toolkit (GATK) (<https://software.broadinstitute.org/gatk/>), including indel positioning by GATK Realigner Target Creator and re-alignment by GATK IndelRealigner. An improved overlapping sequence of restriction associated DNA (RAD tag), was used for SNV calling using GATK UnifiedGenotyper, with a minimum confidence threshold and emit confidence score of 0.5 and 0.3, respectively. Low-quality RAD tag with a Phred quality score lower than 15 and base quality score less than 20 ($Q > 20$, 1:100; 90%) were excluded.

The ddRADseq libraries were sequenced at more than 6X coverage, and the identified SNVs were used for SNP-index calculation. The bi-allelic depths for the reference and alternate allele score at each position were calculated (Takagi et al. 2013). The Δ SNP-index was calculated by subtracting the SNP-index of the resistant pool from that of the susceptible pool. Alternatively, subtracting the SNP-index of the resistant lines from that of the susceptible lines was used for Δ SNP-index analysis. To identify candidate genomic regions responsible for BPH resistance, the Δ SNP-index between susceptible pool vs. resistant pool and susceptible individuals vs. resistant individuals were calculated as absolute values. The average Δ SNP-index of all 2-Mb sliding genomic windows were calculated at 10 kb increments and plotted with a statistical confidence interval.

LD analysis

LD analysis was performed in the BC₃F₅ population (KDML105 × RH) by pairwise comparisons among kompetitive allele-specific PCR(KASP)-SNP markers

distributed across the two QTLs for BPH resistance identified by QTL-seq analysis using the HAPLOVIEW software version 4.2 (Barrett et al. 2005) using the following parameters: minor allele frequency (MAF) > 0.05; Hardy–Weinberg *P*-value cut-off, 0; and percentage of genotyped lines > 0.50. LD was estimated using squared allele frequency correlations (r^2) between pairs of loci. *P*-value < 0.001 was used as a criteria for significant LD, the remaining r^2 values were considered as uninformative. The pattern and distribution of LD were visualized and studied from LD plots generated for each chromosome using HAPLOVIEW software version 4.2. LD blocks were defined using confidence intervals (Gabriel et al. 2002).

KASP-SNP design and single marker analysis of BILs

SNP markers from sliding windows QBPH4.1 and QBPH4.2 and previously reported BPH resistance genes were designed using 100 bp flanking sequence on either side of the polymorphisms. Two allele-specific forward primers were designed with differences at the 3' ends where the target SNP was located, and one common reverse primer was designed following KASP genotyping technology (Additional file 4: Table S7). Single marker analysis was performed by one-way analysis of variance (ANOVA) and simple linear regression using GenStat software (18th edition) (<https://www.vsni.co.uk/software/genstat/>).

Reverse screening of JHN mutant population

Screening of 9323 JHN mutant lines was conducted using an SNP in *OsLecRK3*, 21-bp indel in *OsSTPS2*, and SNP in *BPH32*. DNA was extracted using the cetyltrimethylammonium bromide (CTAB) method. Approximately 2–5 ng of DNA was genotyped using the KASP genotyping platform (KBioscience/LGC, Middlesex, UK). The M₆ seeds of selected mutant lines were retrieved from the mutant seed bank, germinated, and tested for BPH resistance.

Genomic sequence analysis of *OsLecRK1–3* genes

The genomic sequence of LOC_Os04g12540 (*OsLecRK1*), LOC_Os04g12560 (*OsLecRK2*), and LOC_Os04g12580 (*OsLecRK3*) of rice cultivar Nipponbare were retrieved from the Rice Genome Annotation Project (<http://rice-plantbiology.msu.edu>). Overlapping primers (Additional file 1: Table S9) spanning the full-length sequence of the target genes and additional 500-bp upstream and downstream sequences were designed using Primer3 version 0.4.0 (<http://bioinfo.ut.ee/primer3-0.4.0/>). Genomic DNA fragments of the genes were amplified using DreamTaq PCR Master Mix (2X) (Thermo Fisher Scientific Inc., Waltham, MA, USA). DNA fragments were purified and sequenced (Pacific Science Co., Ltd., Bangkok, Thailand).

Gene sequences were assembled using CAP3 assembly (Huang and Madan 1999). Amino acid gene sequences were translated by using the ExPASy Translate Tool (<https://web.expasy.org/translate/>). Nucleotide sequences of the genes from mutant and the predicted amino acid sequences of rice lines were compared using Clustal Omega (<https://www.ebi.ac.uk/Tools/msa/clustalo/>).

HP mining

Nucleotide sequences of known BPH resistance genes (*BPH14*, *BPH29*, *BPH18*, *BPH26*, and *BPH9*) from different BPH resistant rice cultivars were compared with the genomic sequence of rice cultivar Nipponbare to identify SNPs. These SNP markers were used together with SNPs identified in QBPH4.1 and QBPH4.2 to generate the HP of candidate genes. HP mining was performed on each gene individually (Toivonen et al. 2000). The impact of each HP on BPH resistance was determined using a single haplotype analysis by one-way ANOVA and simple linear regression using GenStat software (18th edition) (<https://www.vsni.co.uk/software/genstat/>). HPs that affected BPH damage AUC significantly ($P < 0.05$) were associated with BPH resistance. The DRRs of significant HPs were calculated by dividing the mean AUC of a significant HP by the mean AUC of the JHN WT HP.

Phylogenetic analysis

To determine whether selected mutant lines were contaminated by outcrossing, phylogenetic analysis was performed. The BPH resistant mutant lines, JHN4 and JHN09962, together with five BPH susceptible mutant lines and 15 WT-like mutant lines were genotyped by sequencing. Nine extreme BILs, RH, KDML105, Pokkali, and other germplasm were included in this analysis. Phylogenetic analysis was conducted in MEGA7 (Kumar et al. 2016). A total of 8928 RAD-derived SNPs were used as inputs in the UPGMA method at 1000 replicates bootstrap tests (Sneath and Sokal 1973). Genetic distances were computed using the p-distance method (Nei and Kumar 2000).

Graphical genotyping

To dissect the genomic region flanking QBPH4.1 region, 84 polymorphic RAD-derived SNPs located in intergenic regions from 1.45–16.45 Mb on chromosome 4 were analyzed. 32 and 34 Thirty-two intergenic SNPs were used for graphical genotyping analysis of selected BILs while thirty-four intergenic SNPs were used for selected mutants. The KASP-SNP gene-specific markers were used within the *OsLecRK1–3* region.

Additional files

Additional file 1: Table S1. Evaluations for brown planthopper (BPH) resistance of the progeny using 6 BPH populations; KPP = Kamphaeng Phet, NAN = Nan, PSL = Phitsanulok, UBN = Ubon Ratchathani, TPY = Ta Phraya, HTL = Huai Thalaeng. **Table S2.** Summary of ddRADseq data. **Table S3.** distribution on the rice chromosomes of identified SNPs in each ddRADseq library. **Table S4.** List of SNP identified on the BPH32-gene-containing sliding window (0.03–2.03 Mb) on chromosome 6. SI = SNP index; QS = QBPHS; QR = QBPHR; IndS = BPHS; IndR = BPHR; AAC = amino acid change; (–) = synonymous variant; (+) = missense variant or stop codon. DNA markers used for molecular breeding programs to improve BPH resistance were highlighted in gray. **Table S5.** Genotyping data at BPH32-SNP of selected mutant lines by reverse screening and BPH damage AUC tests using 3 BPH populations. **Table S6.** KASP-SNP marker from QBPH4.1, QBPH4.2, and BPH-R genes. **Table S8.** HP analysis of significant genes in 4 resistant mutant lines and 5 susceptible mutant lines. **Table S9.** List of overlapping primers for sequence analysis of *OsLecRK1–3* genes in mutant lines. (DOCX 61 kb)

Additional file 2: Figure S1. The aggressiveness of three BPH populations used for BPH resistance validation of mutant lines. **Figure S2.** Average AUC of 105 BILs and their parental varieties, KDML105 and RH. The selected extreme lines for susceptible and resistance individuals were labeled in yellow and red respectively. **Figure S3.** Aggressiveness of three BPH population used for BPH resistance validation of mutant lines. (DOCX 23 kb)

Additional file 3: Data S1. Amino acid sequence analysis of *OsLecRK1* gene in JHN, identified mutants and natural BPH resistance varieties, RH. Data S2. Amino acid sequence analysis of *OsLecRK2* gene in JHN, identified mutants and natural BPH resistance varieties, RH. Data S3. Amino acid sequence analysis of *OsLecRK3* gene in JHN, identified mutants and natural BPH resistance varieties, RH and PTB33. (DOCX 27 kb)

Additional file 4: Table S7. Haplotype pattern analysis of candidate genes for BPH resistance in mutant lines. (XLSX 27 kb)

Acknowledgments

This work was supported by the Innovation for Sustainable Agriculture (ISA) (Grant number P-18-52711), Cluster and Program Management Office (CPMO), National Science and Technology Development Agency (NSTDA), and The Newton Fund (Grant number P-16-50286), NSTDA.

Funding

This study was funded by the Innovation for Sustainable Agriculture (ISA) (Grant number P-18-52711), Cluster and Program Management Office (CPMO), National Science and Technology Development Agency (NSTDA), and The Newton Fund (Grant number P-16-50286), NSTDA.

Availability of data and materials

The data sets supporting the conclusions of this article are included within the article and its additional files. The sequencing data supporting the conclusions of this article are available in NCBI, with the accessions numbers listed in the main body of text.

Authors' contributions

AV and TT conceived the concept of the experiment; WK, SR, PC, LK, EC, WJ, CS, and KP performed the experiments; WK and AV wrote the manuscript; PC, LK, and WJ performed the BPH infestation experiments; SR and WK performed the KASP genotyping of the JHN mutant population; SR and KP maintained the JHN mutant population; CS and EC performed the ddRADseq, QTL-seq, and *bhth457*; WK and AV analyzed the data; AV revised the manuscript and all the authors reviewed and approved this submission.

Ethics approval and consent to participate

Not applicable.

Consent for publication

Not applicable.

Competing interests

The authors declare that they have no competing interests.

Publisher's Note

Springer Nature remains neutral with regard to jurisdictional claims in published maps and institutional affiliations.

Author details

¹Rice Gene Discovery and Utilization Laboratory, Innovative Plant Biotechnology and Precision Agriculture Research Team, National Center for Genetic Engineering and Biotechnology (BIOTEC), National Science and Technology Development Agency (NSTDA), Khlong Luang, Pathum Thani, Thailand. ²Rice Science Center, Kasetsart University Kamphaeng Saen Campus, Nakhon Pathom, Thailand. ³Interdisciplinary Graduate Program in Genetic Engineering and Bioinformatics, Kasetsart University, Chatuchak, Bangkok, Thailand. ⁴Integrative Crop Biotechnology and Management Research Group, National Center for Genetic Engineering and Biotechnology (BIOTEC), National Science and Technology Development Agency (NSTDA), Khlong Luang, Pathum Thani, Thailand. ⁵Agronomy Department, Faculty of Agriculture at Kamphaeng Saen, Kasetsart University, Kamphaeng Saen, Nakhon Pathom, Thailand.

Received: 19 October 2018 Accepted: 25 February 2019

Published online: 19 March 2019

References

- Ane NU, Hussain M (2016) Diversity of insect pests in major rice growing areas of the world. *J Entomol Zool Stud* 4:36–41
- Barrett JC, Fry B, Maller J, Daly MJ (2005) Haploview: analysis and visualization of LD and haplotype maps. *Bioinformatics* 21:263–265 <https://doi.org/10.1093/bioinformatics/bth457>
- Belfield EJ, Gan X, Mithani A, Brown C, Jiang C, Franklin K, Alvey E, Wibowo A, Jung M, Bailey K, Kalwani S, Ragoussis J, Mott R, Harberd NP (2012) Genome-wide analysis of mutations in mutant lineages selected following fast-neutron irradiation mutagenesis of *Arabidopsis thaliana*. *Genome Res* 22(7):1306–1315 <https://doi.org/10.1101/gr.131474.111>
- Bolon YT, Haun WJ, Xu WW, Grant D, Stacey MG, Nelson RT, Gerhardt DJ, Jeddleloh JA, Stacey G, Muehlbauer GJ, Orf JH, Naeve SL, Stupar RM, Vance CP (2011) Phenotypic and genomic analyses of a fast neutron mutant population resource in soybean. *Plant Physiol* 156:240–253. <https://doi.org/10.1104/pp.110.170811>
- Bolon YT, Stec AO, Michno JM, Roessler J, Bhaskar PB, Ries L, Dobbels AA, Campbell BW, Young NP, Anderson JE, Grant DM, Orf JH, Naeve SL, Muehlbauer GJ, Vance CP, Stupar RM (2014) Genome resilience and prevalence of segmental duplications following fast neutron irradiation of soybean. *Genetics* 198:967–981. <https://doi.org/10.1534/genetics.114.170340/-DC1>
- Boyko A, Filkowski J, Kovalchuk I (2005) Homologous recombination in plants is temperature and day-length dependent. *Mut Res* 572:73–83. <https://doi.org/10.1016/j.mrfmmm.2004.12.011>
- Campbell BW, Hofstad AN, Sreekanta S, Fu F, Kono TJ, O'Rourke JA, Vance CP, Muehlbauer GJ, Stupar RM (2016) Fast neutron-induced structural rearrangements at a soybean NAP1 locus result in gnarled trichomes. *Theor Appl Genet* 129:1725–1738 <https://doi.org/10.1007/s00122-016-2735-x>
- Cheng X, Zhu L, He G (2013) Towards understanding of molecular interactions between rice and the brown planthopper. *Mol Plant* 6(3):621–634
- Dale D (1994) Insect pest of rice plant—their biology and ecology. In: Heinrich EA (ed) *Biology and Management of Rice Insects*. Wiley, New York
- Du B, Zhang W, Liu B, Hu J, Wei Z, Shi Z, He R, Zhu L, Chen R, Han B, He G (2009) Identification and characterization of Bph14, a gene conferring resistance to brown planthopper in rice. *Proc Natl Acad Sci* 106(52):22163–22168. <https://doi.org/10.1073/pnas.0912139106>
- Gabriel SB, Schaffner SF, Nguyen H, Moore JM, Roy J, Blumenstiel B, Higgins J, DeFelice M, Lochner A, Faggart M, Liu-Cordero SN, Rotimi C, Adeyemo A, Cooper R, Ward R, Lander ES, Daly MJ, Altshuler D (2002) The structure of haplotype blocks in the human genome. *Science* 296:2225–2229. <https://doi.org/10.1126/science.1069424>
- Gilchrist E, Haughn G (2010) Reverse genetics techniques: engineering loss and gain of gene function in plants. *Brief Funct Genomics* 9(2):103–110 <https://doi.org/10.1093/bfgp/elp059>
- Heinrichs EA, Medrano FG, Rapusas HR (1985) Genetic evaluation for insect resistance in rice. International Rice Research Institute, Los Banos
- Hoen DR, Bureau TE (2015) Discovery of novel genes derived from transposable elements using integrative genomic analysis. *Mol Biol Evol* 42:1487–1506. <https://doi.org/10.1093/molbev/msv042>
- Hong WJ, Jung KH (2018) Comparative analysis of flanking sequence tags of T-DNA/transposon insertional mutants and genetic variations of fast-neutron treated mutants in rice. *J Plant Biol* 61:80–84. <https://doi.org/10.1007/s12374-017-0425-0>
- Hu J, Li X, Wu CJ, Yang CJ, Hua HX, Gao GJ, Xiao JH, He YQ (2012) Pyramiding and evaluation of the brown planthopper resistance genes Bph14 and Bph15 in hybrid rice. *Mol Breed* 29:61–69
- Huang X, Madan A (1999) CAP3: a DNA sequence assembly program. *Genome Res* 9(9):868–877
- International Rice Research Institute (2013) Standard evaluation system for Rice (SES), 5th edn. IRRI, Manila
- Jairin J, Phengrat K, Teangdeerith S, Vanavichit A, Toojinda T (2007) Mapping of a broad-spectrum brown planthopper resistance gene, Bph3, on rice chromosome 6. *Mol Breed* 19:35–44
- Jairin J, Teangdeerith S, Leelagud P, Kothcharek J, Sansen K, Yi M, Vanavichit A, Toojinda T (2009) Development of rice introgression lines with brown planthopper resistance and KDML105 grain quality characteristics through marker-assisted selection. *Field Crops Res* 110:263–271
- Jena KK, Jeung JU, Lee JH, Choi HC, Brar DS (2006) High-resolution mapping of a new brown planthopper (BPH) resistance gene, Bph18(t), and marker-assisted selection for BPH resistance in rice (*Oryza sativa* L.). *Theor Appl Genet* 112(2):288–297
- Jena KK, Kim SM (2010) Current status of brown planthopper (BPH) resistance and genetics. *Rice* 3(2–3):161–171
- Ji H, Kim SR, Kim YH, Suh JP, Park HM, Sreenivasulu N, Misra G, Kim SM, Hechanova SL, Kim H, Lee GS, Yoon UH, Kim TH, Lim H, Suh SC, Yang J, An G, Jena KK (2016) Map-based cloning and characterization of the BPH18 Gene from wild Rice conferring resistance to Brown Planthopper (BPH) insect Pest. *Sci Rep* 6:34376 <https://doi.org/10.1038/srep34376>
- Jing SL, Zhao Y, Du B, Chen RZ, Zhu LL, He GC (2017) Genomics of interaction between the brown planthopper and rice. *Curr Opin Insect Sci* 19:82–87
- Joly-Lopez Z, Forczek E, Vello E, Hoen DR, Tomita A, Bureau TE (2017) Abiotic stress phenotypes are associated with conserved genes derived from transposable elements. *Front Plant Sci* 8:2027
- Kamolsukyeunyong W, Sukhaket W, Ruanjaichon V, Toojinda T, Vanavichit A (2013) Single-feature polymorphism mapping of isogenic rice lines identifies the influence of terpene synthase on brown planthopper feeding preferences. *Rice* 6:18
- Kloosterman B, Abelenda JA, Gomez MM, Oortwijn M, de Boer JM, Kowitwanich K, Horvath BM, van Eck HJ, Smaczniak C, Prat S, Visser RG, Bachem CW (2013) Naturally occurring allele diversity allows potato cultivation in northern latitudes. *Nature* 495(7440):246–250
- Kumar S, Stecher G, Tamura K (2016) MEGA7: molecular evolutionary genetics analysis version 7.0 for bigger datasets. *Mol Biol Evolution* 33:1870–1874
- Langmead B, Salzberg SL (2012) Fast gapped-read alignment with bowtie 2. *Nat Methods* 9:357–359
- Li G, Chern M, Jain R, Martin JA, Schackwitz WS, Jiang L, Vega-Sánchez ME, Lipzen AM, Barry KW, Schmutz J, Ronald PC (2016) Genome-wide sequencing of 41 rice (*Oryza sativa* L.) mutated lines reveals diverse mutations induced by fast-neutron irradiation. *Mol Plant* 9:1078–1081
- Li G, Jain R, Chern M, Pham NT, Martin JA, Wei T, Schackwitz WS, Lipzen AM, Duong PQ, Jones KS, Jiang L, Ruan D, Bauer D, Peng Y, Barry KW, Schmutz J, Ronald PC (2017) The sequences of 1504 mutants in the model rice variety Kitaake facilitate rapid functional genomic studies. *Plant Cell* 29(6):1218–1231
- Li X, Lassner M, Zhang YL (2002) Deleteagene: a fast neutron deletion mutagenesis-based gene knock out system for plants. *Comp Funct Genomics* 3:158–160. <https://doi.org/10.1002/cfg.148>
- Li X, Song Y, Century K, Straight S, Ronald P, Dong X, Lassner M, Zhang Y (2001) A fast neutron deletion mutagenesis-based reverse genetics system for plants. *Plant J* 27:235–242
- Ling Y, Weilin Z (2016) Genetic and biochemical mechanism of rice resistance to planthopper. *Plant Cell Rep* 35(8):1559–1572. <https://doi.org/10.1007/s00299-016-1962-6>
- Litsinger JA (1991) Crop loss assessment in rice. In: Heinrichs EA, Miller TA (eds) *Rice insects: management strategies*. Springer Series in Experimental Entomology. Springer-Verlag, New York, pp 1–66

- Liu Y, Wu H, Chen H, Liu Y, He J, Kang H, Sun Z, Pan G, Wang Q, Hu J, Zhou F, Zhou K, Zheng X, Ren Y, Chen L, Wang Y, Zhao Z, Lin Q, Wu F, Zhang X, Guo X, Cheng X, Jiang L, Wu C, Wang H, Wan J (2014) A gene cluster encoding lectin receptor kinases confers broad-spectrum and durable insect resistance in rice. *Nat Biotech* 33:301–305
- Lou YG, Du MH, Turlings TCJ, Cheng JA, Shan WF (2005) Exogenous application of jasmonic acid induces volatile emissions in rice and enhances parasitism of *Nilaparvatalugens* eggs by the parasitoid *Anagrus nilaparvatae*. *J Chem Ecol* 31:1985–2002 <https://doi.org/10.1007/s10886-005-6072-9>
- Maki H (2002) Origins of spontaneous mutations: specificity and directionality of base-substitution, frame shift, and sequence substitution mutageneses. *Annu Rev Genet* 36:279–303
- Mohanty S (2013) Trends in global rice consumption. *Rice Today* 12:44–45
- Muthayya S, Sugimoto JD, Montgomery S, Maberly GF (2014) An overview of global rice production, supply, trade, and consumption. *Ann N Y Acad Sci* 1324:7–14
- Nei M, Kumar S (2000) *Molecular evolution and Phylogenetics*. Oxford University Press, New York
- Pathak MD, Cheng CH, Fortuno ME (1969) Resistance to *Nephotettix impicticeps* and *Nilaparvata lugens* in varieties of rice. *Nature* 223(5205):502–504
- Peterson BK, Weber JN, Kay EH, Fisher HS, Hoekstra HE (2012) Double digest RADseq: an inexpensive method for de novo SNP discovery and genotyping in model and non-model species. *PLoS One* 7(5):e37135. <https://doi.org/10.1371/journal.pone.0037135>
- Pitija K, Kamolsukyeunyong W, Vanavichit A, Sookwong P, Mahatheeranont S (2014) Monoterpenoid allelochemicals in resistance rice varieties against brown planthoppers, *Nilaparvata lugens* (Stål). *JOAAT* 1(2):82–88
- Pootakham W, Ruang-Areerate P, Jomchai N, Sonthirod C, Sangsrakru D, Yoocha T, Theerawattanasuk K, Nirapathpongorn K, Romruensukharom P, Tragoonrun S, Tangphatsornruang S (2015) Construction of a high-density integrated genetic linkage map of rubber tree (*Hevea brasiliensis*) using genotyping-by-sequencing (GBS). *Front Plant Sci* 6:367 <https://doi.org/10.3389/fpls.2015.00367>
- Pralhada GD, Shivakumar N, Lohithaswa HC, Sidde Gowda DK, Ramkumar G, Kim SR, Ramachandra C, Hittalmani S, Mohapatra T, Jena KK (2017) Identification and fine mapping of a new gene, BPH31 conferring resistance to brown planthopper biotype 4 of India to improve rice, *Oryza sativa* L. *Rice* 10:41 <https://doi.org/10.1186/s12284-017-0178-x>
- Qiu YF, Guo JP, Jing SL, Zhu LL, He GC (2014) Fine mapping of the rice brown planthopper resistance gene BPH7 and characterization of its resistance in the 93-11 background. *Euphytica* 198(3):369–379
- Rahman ML, Jiang W, Chu SH, Qiao Y, Ham TH, Woo MO, Lee J, Khanam MS, Chin JH, Jeung JU, Brar DS, Jena KK, Koh HJ (2009) High-resolution mapping of two rice brown planthopper resistance genes, Bph20(t) and Bph21(t), originating from *Oryzaminuta*. *Theor Appl Genet* 119(7):1237–1246
- Ren J, Gao F, Wu X, Zeng L, Lv J, Su X, Luo H, Ren G (2016) BPH32, a novel gene encoding an unknown SCR domain-containing protein, confers resistance against the brown planthopper in rice. *Sci Rep* 6:37645. <https://doi.org/10.1038/srep37645>
- Ruengphayak S, Ruanjaichon V, Saensuk C, Phromphan S, Tragoonrun S, Kongkachuichai R, Vanavichit A (2015) Forward screening for seedling tolerance to Fe toxicity reveals a polymorphic mutation in ferric chelate reductase in rice. *Rice* 8:3. <https://doi.org/10.1186/s12284-014-0036-z>
- Sneath PHA, Sokal RR (1973) *Numerical taxonomy*. Freeman, San Francisco
- Sun L, Su C, Wang C, Zhai H, Wan J (2005) Mapping of a major resistance gene to the brown planthopper in the rice cultivar RathuHeenati. *Breed Sci* 55:391–396
- Tagaki H, Abe A, Yoshida K, Kosugi S, Natsume S, Mitsuoka C, Uemura A, Utsushi H, Tamiru M, Takuno S, Innan H, Cano LM, Kamoun S, Terauchi R (2013) QTL-seq: rapid mapping of quantitative trait loci in rice by whole genome resequencing of DNA from two bulked populations. *Plant J* 74:174–183. <https://doi.org/10.1111/tpj.12105>
- Tamura Y, Hattori M, Yoshioka H, Yoshioka M, Takahashi A, Wu J, Sentoku N, Yasui H (2014) Map-based cloning and characterization of a brown planthopper resistance gene BPH26 from *Oryza sativa* L. ssp. *indica* cultivar ADR52. *Sci Rep* 4:5872
- Thi Lang N, Chi Buu B (2003) Genetic and physical maps of gene Bph10 controlling brown planthopper resistance in rice (*Oryza sativa* L.). *Omonrice* 11:35–41
- Till BJ, Cooper J, Tai TH, Colowit P, Greene EG, Henikoff S, Comai L (2007) Discovery of chemically induced mutations in rice by TILLING. *BMC Plant Biol* 7:19
- Toivonen H, Onkamo P, Vasko K, Ollikainen V, Sevón P, Mannila H, Kere J (2000) Gene mapping by haplotype pattern mining. *Proc. IEEE Int'l Symp. Bioinformatics and biomedical Eng.* pp 99–108
- Vanavichit A, Kamolsukyeunyong W, Siangliw M, Siangliw JL, Traprab S, Ruengphayak S, Chaichoompu E, Saensuk C, Phuvanartnarubal E, Toojinda T, Tragoonrun T (2018) Thai Hom Mali Rice: origin and breeding for subsistence Rainfed lowland Rice system. *Rice* 11:20 <https://doi.org/10.1186/s12284-018-0212-7>
- Wanchana S, Toojinda T, Tragoonrun S, Vanavichit A (2003) Duplicated coding sequence in the waxy allele of tropical glutinous rice (*Oryza sativa* L.). *Plant Sci* 165:1193–1199
- Wang Y, Cao L, Zhang Y, Cao C, Liu F, Huang F, Qiu Y, Li R, Lou X (2015) Map-based cloning and characterization of BPH29, a B3 domain-containing recessive gene conferring brown planthopper resistance in rice. *J Exp Bot* 66(19):6035–6045 <https://doi.org/10.1093/jxb/erv318>
- Wang Y, Li H, Si Y, Zhang H, Guo H, Miao X (2012) Microarray analysis of broad-spectrum resistance derived from an indica cultivar RathuHeenati. *Planta* 235:829–840
- Wu JL, Wu C, Lei C, Baraoidan M, Bordeos A, Madamba MR, Ramos-Pamplona M, Mauleon R, Portugal A, Ulat VJ, Bruskiwicz R, Wang G, Leach J, Khush G, Leung H (2005) Chemical- and irradiation-induced mutants of indica rice IR64 for forward and reverse genetics. *Plant Mol Biol* 59:85–97
- Yamaguchi H, Hase Y, Tanaka A, Shikazono N, Degi K, Shimizu A, Morishita T (2009) Mutagenic effects of ion beam irradiation on rice. *Breed Sci* 59:169–177
- Yao Y, Kovalchuk I (2011) Abiotic stress leads to somatic and heritable changes in homologous recombination frequency, point mutation frequency and microsatellite stability in Arabidopsis plants. *Mut Res* 707:61–66. <https://doi.org/10.1016/j.mrfmmm.2010.12.013>
- Zhao Y, Huang J, Wang Z, Jing S, Wang Y, Ouyang Y, Cai B, Xin XF, Liu X, Zhang C, Pan Y, Ma R, Li Q, Jiang W, Zeng Y, Shangguan X, Wang H, Du B, Zhu L, Xu X, Feng YQ, He SY, Chen R, Zhang Q, He G (2016) Allelic diversity in an NLR gene BPH9 enables rice to combat planthopper variation. *Proc Natl Acad Sci* 113(45):12850–12855. <https://doi.org/10.1073/pnas.1614862113>

Submit your manuscript to a SpringerOpen® journal and benefit from:

- Convenient online submission
- Rigorous peer review
- Open access: articles freely available online
- High visibility within the field
- Retaining the copyright to your article

Submit your next manuscript at ► [springeropen.com](https://www.springeropen.com)