

TRI-OLOGY

A PUBLICATION OF THE FLORIDA DEPARTMENT OF AGRICULTURE AND CONSUMER SERVICES, DIVISION OF PLANT INDUSTRY
ADAM H. PUTNAM, COMMISSIONER RICHARD D. GASKALLA, DIVISION DIRECTOR

FDACS-P-00124 Volume 54, Number 3, May - June 2015

DPI's Bureau of Entomology, Nematology and Plant Pathology (the botany section is included in this bureau) produces TRI-OLOGY six times a year, covering two months of activity in each issue. The report includes detection activities from nursery plant inspections, routine and emergency program surveys, and requests for identification of plants and pests from the public. Samples are also occasionally sent from other states or countries for identification or diagnosis.



Clausena lansium (wampee)
Photograph courtesy of Wikipedia
https://en.wikipedia.org/wiki/Clausena_lansium#



Banisia argutula, a moth. Scale in mm.
Photograph is courtesy of James E. Hayden, DPI



Belionota prasina, ruby-necked jewel beetle
Photograph courtesy of Paul E. Skelley, DPI



Coccotrypes aciculatus
Photograph courtesy of Katherine E. Okins, DPI

Highlights

Following are a few of the notable entries from this volume of TRI-OLOGY. These entries are reports of interesting plants or unusual pests, some of which may be problematic. See Section Reports for complete information.

***Clausena lansium* (wampee, wampi, huang pi).** Rutaceae. This evergreen tree is planted as an ornamental or for fruit, although it is not well-known outside its native range in southern China and several countries of Southeast Asia. The globose to ellipsoid fruit has a yellow rind dotted with oil glands. The large clusters of fruit have been compared to bunches of tiny lemons or limes in appearance.

***Banisia argutula*, a moth, a new Continental USA record.** This moth has infested fruits and flowers of *Manilkara zapota* (sapodilla) in southern Florida for some years. It has been confused with *B. myrsusalis*, a pantropical pest of sapodilla that has been recorded in the Florida Keys in the 1950s

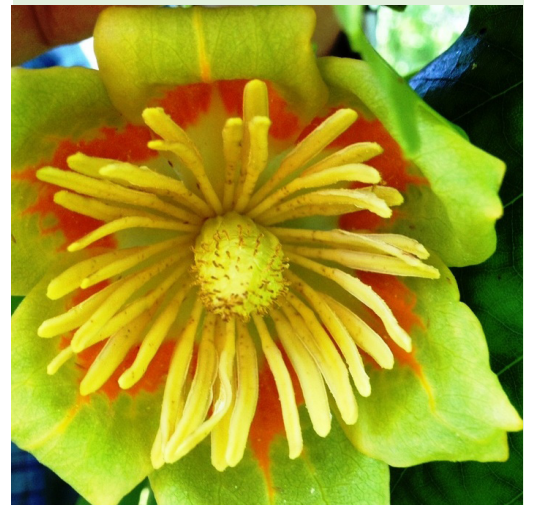
***Belionota prasina*, ruby-necked jewel beetle, a new Continental USA record.** A living specimen was found on the beach at Hobe Sound by a DPI entomologist. No member of this genus has been reported in North America, and a living specimen well outside of a port of entry represents a potential establishment.

***Coccotrypes aciculatus*, a new Continental USA record.** The United States record of *Coccotrypes aciculatus* was collected in a lindgren funnel trap in Miami-Dade County in 2012 and has recently been verified as that species.

***Petrusa epilepsis*, seagrape flatid planthopper, a new Continental USA record.** This species is known from the Caribbean and especially from Puerto Rico, where it occurs in high numbers on cultivated plants.

Section Reports

Botany	2
Entomology	5
Nematology	11
Plant Pathology	13
Retirement	17



Photograph courtesy of Patti Anderson, DPI.

How to cite Tri-ology:

Dixon, W.N. and P.J. Anderson. (Editors). year. Section. Tri-ology Volume(number): page. [date you accessed site] website address For example: Dixon, W.N. and P.J. Anderson. (Editors). 2012. Entomology section. Tri-ology 47(5): 8. [accessed July 5, 2013] http://www.freshfromflorida.com/content/download/12542/151552/triology_5101.pdf

Acknowledgements:

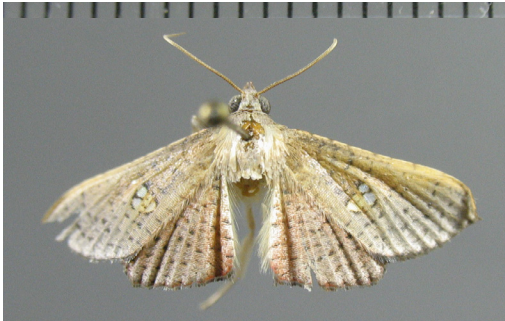
The editors would like to acknowledge the work of all those who contributed information and explanations by providing data, photographs or text and by carefully reading early drafts. We also thank [Reid Carswell](#) for his skillful use of web authoring tools to produce this report.

We welcome your suggestions for improvement of TRI-OLOGY. Please feel free to contact me or [Dr. Patti Anderson](#) with your comments.
[Dr. Greg Hodges](#), Editor,
Assistant Director, DPI

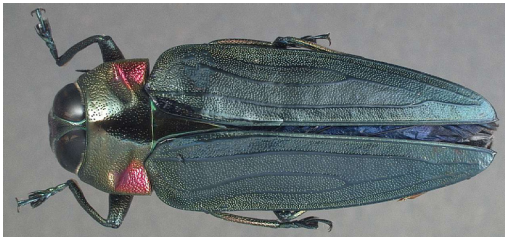


Sample/Specimen Submissions

May	
Samples Submitted	659
Specimens Identified	9,206
June	
Samples Submitted	746
Specimens Identified	11,426
Year to Date	
Samples Submitted	3,526
Specimens Identified	60,180



Banisia argutula, a moth. Scale in mm. Photograph is courtesy of James E. Hayden, DPI



Belionota prasina, ruby-necked jewel beetle. Photograph courtesy of Paul E. Skelley, DPI



Coccotrypes aciculatus. Photograph courtesy of Katherine E. Okins, DPI

Entomology Section

Compiled by [Susan E. Halbert, Ph.D.](#)

This section provides the division’s plant protection specialists and other customers with accurate identifications of arthropods. The entomology section also builds and maintains the arthropod reference and research collection (the Florida State Collection of Arthropods with over 9 million specimens) and investigates the biology, biological control and taxonomy of arthropods.

***Banisia argutula*, a moth, a new Continental USA record.** This moth has infested fruits and flowers of *Manilkara zapota* (sapodilla) in southern Florida for some years. It has been confused with *B. myrsusalis* (Walker), a pantropical pest of sapodilla that has been recorded in the Florida Keys in the 1950s. Although the biology of *B. myrsusalis* has been studied in Asia, nothing has been published about *B. argutula* since the original description. Peña’s (1994) record likely refers to *B. argutula*. The two species are externally similar, but *B. argutula* is slightly smaller than *B. myrsusalis*. There are several genitalic differences between the two species, so positive identification requires dissection. A third species in Florida, *B. furva fracta* Whalley, is distinctive externally and internally. It remains possible that more than one of these species are involved in the sapodilla pest complex, but more specimens need to be reared. (Miami-Dade County; E2015-3272; José Ismale Martinez, University of Florida student, and Daniel Carrillo, UF/IFAS Tropical Research and Education Center; 10 April 2015.) (Dr. James E. Hayden, DPI.)

***Belionota prasina*, ruby-necked jewel beetle, a new Continental USA record.** A living specimen of *Belionota prasina* (Thunberg) (Coleoptera: Buprestidae) was found on the beach at Hobe Sound by a DPI entomologist. No member of this genus has been reported in North America, and a living specimen well outside of a port of entry represents a potential establishment. Members of the genus *Belionota* are approximately one inch long and occur widely in Asia and Indonesia, also in Africa and northern Australia. *Belionota prasina*, one of the most widespread species of the genus, has been occasionally intercepted by the USDA at ports of entry in the last ten years and has recently been reported in French Guiana. Larvae of *B. prasina* have been reported in a number of hosts, including *Delonix regia* (royal poinciana), *Ceiba pentandra* (kapok) and *Mangifera indica* (mango). Adults have been reported to oviposit on *Casuarina* sp. (Australian pine), but larval development has not been confirmed. Little literature is available on this species, and none indicates it is a pest. Like most members of the family, *B. prasina* appears to feed only on dead or dying wood. (Martin County; E2015-3308; Paul E. Skelley; 19 June 2015.) (Kyle E. Schnepf.)

***Coccotrypes aciculatus*, a new Continental USA record.** The United States record of *Coccotrypes aciculatus* Schedl (Coleoptera: Curculionidae: Scolytinae) was collected in a Lindgren funnel trap with a-pinene and ethanol lures in Miami-Dade County in 2012 and has recently been verified as that species. Like most members of the sub-family, *C. aciculatus* is a minute brown beetle, about 1.2 mm long. It is distributed from southern Mexico through southern Brazil and Cuba, and is probably native to Papua New Guinea. Hosts include *Virola* sp. (cumala/virola nut) in the nutmeg family (Myristicaceae), palms, and *Cecropia* sp. petioles and seeds. Though *C. aciculatus* is an introduced species in the Americas, it does not appear to be a pest. (Miami-Dade County; E2015-2708; Andrew I. Derksen, CAPS; 2 July 2012.) (Katherine E. Okins.)



Petrusa epilepsis, seagrape flatid planthopper, mature adult on Florida native lantana

Photograph courtesy of Seth Mularz, Mularz Design

***Petrusa epilepsis*, seagrape flatid planthopper, a new Continental USA**

record. This species is known from the Caribbean and especially from Puerto Rico, where it occurs in high numbers on cultivated plants. This species could become a pest of ornamental plants and possibly mangos. (Broward County; E2015-2880; Michelle L. Leonard; 1 June 2015.) (Dr. Charles R. Bartlett, University of Delaware, and Dr. Susan E. Halbert.)

***Pygospina reducta*, a delphacid planthopper, a new Continental USA**

record. Little is known about this species except that it is native to the Caribbean. This specimen was found in a suction trap, so nothing is known about the Florida host range. It is unlikely to become a pest. The species can be recognized only by its distinctive male genitalia. (Collier County; E2014-8209; Scott D. Croxton, University of Florida graduate student, Southwest Florida Research and Education Center; 11 December 2014.) (Dr. Charles R. Bartlett, University of Delaware, and Dr. Susan E. Halbert.)



Epuraea ocularis, a sap beetle

Photograph courtesy of Paul E. Skelley, DPI

***Epuraea ocularis*, a sap beetle, a new Florida State record.**

Adults of *Epuraea ocularis* Fairmaire (Coleoptera: Nitidulidae) were found in damaged *Manilkara zapota* (sapodilla) at a Tampa residence. This is a nearly cosmopolitan species, found in Texas in 2010. Related sap beetles are only nuisance pests, feeding in damaged fruits. Concern was expressed over their control. As with any member of this group, the best control is likely to be cleaning up damaged and fallen fruit in the area to reduce breeding sites. (Hillsborough County; E2015-2730; Michael A. Dina, USDA/APHIS/PPQ; 26 May 2015.) (Dr. Paul E. Skelley.)

***Hylesinus aculeatus*, a new Florida State record.**

A single specimen of *Hylesinus aculeatus* Say (Coleoptera: Curculionidae: Scolytinae) was collected in a green lindgren funnel trap with manuka oil and z3-hexen-1-ol lures hung in an ash tree (*Fraxinus* sp.) at Silver River State Park in Marion County. Like most members of the genus, *H. aculeatus* is covered in round, flat setae, forming a colorful pattern not usually seen on scolytines. This species is native to North America, its range extending from Alberta, Canada, down through the United States east of the Rocky Mountains. *H. aculeatus* attacks the bole, limbs and larger branches of *Fraxinus* spp., but is not a pest. (Marion County; E2015-2224; Bradley A. Danner, CAPS/DPI, and Robert M. Leahy, CAPS/USDA; 20 March 2015.) (Katherine E. Okins.)



Hylesinus aculeatus

Photograph courtesy of Katherine E. Okins, DPI

***Pseudomops septentrionalis*, pale bordered field cockroach, a new Florida**

State record. This species was described from southern Texas in 1917. Since then it has been moving gradually to more northern and eastern localities. It was reported from New Boston, Texas, in 1943 and was collected in Shreveport, Louisiana, in 1952 and Baton Rouge, Louisiana, in 1962. The species also was found in Lee County, Alabama, in 1996. *Bugguide.net* records indicate the species occurs in all southeastern states, reaching as far north as Kansas and Tennessee. *Pseudomops septentrionalis* has not been recorded as being a pest; its typical habitat is on foliage and in leaf litter. The species also appears to be sensitive to desiccation, so movement into air-conditioned homes is unlikely. (Suwannee County; E2015-3316; Marc C. Minno, Eco-Cognizant, Inc.; 15 June 2015.) (Kyle E. Schnepf.)



Pseudomops septentrionalis, pale bordered field cockroach

Photograph is courtesy of Kyle E. Schnepf

***Bactrocera correcta*, guava fruit fly, a regulatory incident.**

Two male guava fruit flies were captured in fruit fly detection traps in close spatial and temporal proximity. This was unusual, as newly invading males of this species tend to disperse widely and are typically detected miles apart. An intensive delimitation trapping grid was established over 55 square miles. There has been no further detection of this pest to date. Surveillance trapping will continue until the end of at least two estimated life cycles, approximately 30 Aug 2015. (Palm Beach County, E2015-2747; Eduardo Solis; 27 May 2015 and Palm Beach County; E2015-2781; Olga Garcia; 29 May 2015.) (Dr. Gary J. Steck.)

References

Peña, J.E. 1994. Update on status of pests of tropical fruit crops in South Florida. Proceedings of the Florida State Horticultural Society 107: 340-342. [http://fshs.org/proceedings-o/1994-vol-107/340-342%20\(PENA\).pdf](http://fshs.org/proceedings-o/1994-vol-107/340-342%20(PENA).pdf) [accessed 2015 July 10].

Whalley, P.E.S. 1976. Tropical leaf moths: a monograph on the subfamily Striglininae (Lepidoptera: Thyrididae). London: Trustees of the British Museum (Natural History). 194 p.

Entomology Specimen Report

Following are tables with entries for records of new hosts or new geographical areas for samples identified in the current volume's time period as well as samples of special interest. An abbreviated table, with all the new records, but less detail about them, is presented in the body of this web page and another version with more complete data is downloadable as [PDF](#) or an [Excel](#) spreadsheet.

The tables are organized alphabetically by plant host if the specimen has a plant host. Some arthropod specimens are not collected on plants and are not necessarily plant pests. In the table below, those entries that have no plant information included are organized by arthropod name.



Bactrocera correcta, guava fruit fly
Photograph courtesy of Gary J. Steck, DPI

Plant Name	Plant Common Name	Arthropod	Arthropod Common Name	County	Records
<i>Acacia farnesiana</i>	sweet acacia; aramo	<i>Cydia largo</i>	a tortricid moth	Lee	COUNTY
<i>Acacia farnesiana</i>	sweet acacia; aramo	<i>Heteropsylla flexuosa</i>	a psyllid	Lee	COUNTY
<i>Ananas comosus</i>	pineapple	<i>Phyllocoptruta sakimurae</i>	an eriophyid mite	Escambia	INTERDICTION INTERCEPTION
<i>Ananas comosusp</i>	pineapple	<i>Steneotarsonemus comosus</i>	pineapple multiple crown mite	Escambia	INTERDICTION INTERCEPTION
<i>Ananas comosus</i>	pineapple	<i>Steneotarsonemus comosus?</i>	a tarsonemid mite	Escambia	INTERDICTION INTERCEPTION
<i>Bambusa</i> sp.	bamboo	<i>Poliaspoides formosana</i>	an armored scale	Pinellas	COUNTY
<i>Brassica rapa</i>	pak-choi, bok-choi, pak-choy, bok-choy, Chinese mustard, celery mustard	<i>Ceratagallia californica</i>	a leafhopper	Suwannee	INTERDICTION INTERCEPTION
<i>Brassica rapa</i>	pak-choi, bok-choi, pak-choy, bok-choy, Chinese mustard, celery mustard	<i>Ceratagallia californica</i>	a leafhopper	Escambia	INTERDICTION INTERCEPTION
<i>Brassica rapa</i>	pak-choi, bok-choi, pak-choy, bok-choy, Chinese mustard, celery mustard	<i>Phyllotreta cruciferae</i>	crucifer flea beetle	Escambia	INTERDICTION INTERCEPTION
<i>Citrus aurantium</i>	sour orange	<i>Oncopeltus cayensis</i>	a seed bug	Pasco	COUNTY
<i>Citrus aurantium</i>	sour orange	<i>Opistheurista cladestina</i>	a plant bug	Lake	COUNTY
<i>Eucalyptus</i> sp.		<i>Leptocybe invasa</i>	blue gum chalcid wasp	St. Johns	COUNTY
<i>Eugenia uniflora</i>	Surinam cherry; Cayenne cherry	<i>Anasaitis canosa</i>	a jumping spider	Martin	COUNTY
<i>Forestiera segregata</i>	Florida swamp privet	<i>Petrusa epilepsis</i>	a flatid planthopper	Broward	HOST
<i>Fragaria x ananassa</i>	garden strawberry	<i>Cixius cultus</i>	a cixiid planthopper	Suwannee	INTERDICTION INTERCEPTION
<i>Fragaria x ananassa</i>	garden strawberry	<i>Lygus</i> sp.	a lygus bug	Escambia	INTERDICTION INTERCEPTION
<i>Fraxinus pennsylvanica</i>	green ash; red ash	<i>Agrilus subcinctus</i>	a buprestid beetle	Volusia	COUNTY
<i>Fraxinus pennsylvanica</i>	green ash; red ash	<i>Agrilus subcinctus</i>	a buprestid beetle	Hernando	COUNTY
<i>Fraxinus</i> sp.	ash	<i>Agrilus subcinctus</i>	a buprestid beetle	Marion	COUNTY
<i>Fraxinus</i> sp.	ash	<i>Anthaxia viridicornis</i>	a buprestid beetle	Alachua	COUNTY
<i>Fraxinus</i> sp.	ash	<i>Apache degeerii</i>	a derbid planthopper	Hendry	COUNTY
<i>Fraxinus</i> sp.	ash	<i>Hylesinus aculeatus</i>	a scolytid beetle	Marion	STATE
<i>Gaultheria shallon</i>	salal	<i>Aleyrodes spiraeoides</i>	a whitefly	Hillsborough	DOG DETECTION
<i>Helianthus annuus</i>	sunflower	<i>Lygus</i> sp.	a lygus bug	Miami-Dade	DOG DETECTION
<i>Helianthus debilis</i>	beach sunflower, dune sunflower	<i>Empoasca bifurcata</i>	a leafhopper	Pinellas	COUNTY
<i>Lactuca sativa</i>	lettuce, romaine lettuce, leaf lettuce	<i>Autographa californica</i>	alfalfa looper	Suwannee	INTERDICTION INTERCEPTION
<i>Lactuca sativa</i>	lettuce, romaine lettuce, leaf lettuce	<i>Ceratagallia californica</i>	a leafhopper	Suwannee	INTERDICTION INTERCEPTION
<i>Lactuca sativa</i>	lettuce, romaine lettuce, leaf lettuce	<i>Ceratagallia californica</i>	a leafhopper	Suwannee	INTERDICTION INTERCEPTION
<i>Lactuca sativa</i>	lettuce, romaine lettuce, leaf lettuce	<i>Ceratagallia californica</i>	a leafhopper	Escambia	INTERDICTION INTERCEPTION
<i>Lactuca sativa</i>	lettuce, romaine lettuce, leaf lettuce	<i>Ceratagallia californica</i>	a leafhopper	Suwannee	INTERDICTION INTERCEPTION
<i>Lactuca sativa</i>	lettuce, romaine lettuce, leaf lettuce	<i>Ceratagallia californica</i>	a leafhopper	Suwannee	INTERDICTION INTERCEPTION
<i>Lactuca sativa</i>	lettuce, romaine lettuce, leaf lettuce	<i>Ceratagallia californica</i>	a leafhopper	Escambia	INTERDICTION INTERCEPTION
<i>Lactuca sativa</i>	lettuce, romaine lettuce, leaf lettuce	<i>Ceratagallia californica</i>	a leafhopper	Suwannee	INTERDICTION INTERCEPTION
<i>Lactuca sativa</i>	lettuce, romaine lettuce, leaf lettuce	<i>Ceratagallia californica</i>	a leafhopper	Suwannee	INTERDICTION INTERCEPTION
<i>Lactuca sativa</i>	lettuce, romaine lettuce, leaf lettuce	<i>Ceratagallia californica</i>	a leafhopper	Suwannee	INTERDICTION INTERCEPTION
<i>Lactuca sativa</i>	lettuce, romaine lettuce, leaf lettuce	<i>Ceratagallia longula</i>	a leafhopper	Escambia	INTERDICTION INTERCEPTION
<i>Lactuca sativa</i>	lettuce, romaine lettuce, leaf lettuce	<i>Cixius cultus</i>	a cixiid planthopper	Suwannee	INTERDICTION INTERCEPTION
<i>Lactuca sativa</i>	lettuce, romaine lettuce, leaf lettuce	<i>Cixius cultus</i>	a cixiid planthopper	Suwannee	INTERDICTION INTERCEPTION
<i>Lactuca sativa</i>	lettuce, romaine lettuce, leaf lettuce	<i>Deltocephalus fuscinosus</i>	a leafhopper	Suwannee	INTERDICTION INTERCEPTION
<i>Lactuca sativa</i>	lettuce, romaine lettuce, leaf lettuce	<i>Deltocephalus fuscinosus</i>	a leafhopper	Suwannee	INTERDICTION INTERCEPTION
<i>Lactuca sativa</i>	lettuce, romaine lettuce, leaf lettuce	<i>Deltocephalus fuscinosus</i>	a leafhopper	Suwannee	INTERDICTION INTERCEPTION
<i>Lactuca sativa</i>	lettuce, romaine lettuce, leaf lettuce	<i>Deltocephalus fuscinosus</i>	a leafhopper	Escambia	INTERDICTION INTERCEPTION
<i>Lactuca sativa</i>	lettuce, romaine lettuce, leaf lettuce	<i>Deltocephalus fuscinosus</i>	a leafhopper	Suwannee	INTERDICTION INTERCEPTION
<i>Lactuca sativa</i>	lettuce, romaine lettuce, leaf lettuce	<i>Deltocephalus fuscinosus</i>	a leafhopper	Seminole	REGULATORY INCIDENT
<i>Lactuca sativa</i>	lettuce, romaine lettuce, leaf lettuce	<i>Eupteryx decemnotata</i>	Ligurian leafhopper	Suwannee	INTERDICTION INTERCEPTION

Plant Name	Plant Common Name	Arthropod	Arthropod Common Name	County	Records
<i>Lactuca sativa</i>	lettuce, romaine lettuce, leaf lettuce	<i>Liriomyza langei</i>	California pea leafminer	Suwannee	INTERDICTION INTERCEPTION
<i>Lactuca sativa</i>	lettuce, romaine lettuce, leaf lettuce	<i>Liriomyza langei</i>	California pea leafminer	Suwannee	INTERDICTION INTERCEPTION
<i>Lactuca sativa</i>	lettuce, romaine lettuce, leaf lettuce	<i>Liriomyza langei</i>	California pea leafminer	Escambia	INTERDICTION INTERCEPTION
<i>Lactuca sativa</i>	lettuce, romaine lettuce, leaf lettuce	<i>Liriomyza langei</i>	California pea leafminer	Suwannee	INTERDICTION INTERCEPTION
<i>Lactuca sativa</i>	lettuce, romaine lettuce, leaf lettuce	<i>Lygus elisus</i>	pale legume bug	Escambia	INTERDICTION INTERCEPTION
<i>Lactuca sativa</i>	lettuce, romaine lettuce, leaf lettuce	<i>Lygus hesperus</i>	a western lygus bug	Escambia	INTERDICTION INTERCEPTION
<i>Lactuca sativa</i>	lettuce, romaine lettuce, leaf lettuce	<i>Udea profundalis</i>	false celery leaf-tier	Escambia	INTERDICTION INTERCEPTION
<i>Lantana involucrata</i>	buttonsage	<i>Petrusa epilepsis</i>	a flatid planthopper	Broward	US CONTINENTAL
<i>Laurus nobilis</i>	laurel; bay leaf	<i>Lygus</i> sp.	a lygus bug	Miami-Dade	DOG DETECTION
<i>Lavandula</i> sp.	lavender	<i>Anstenoptilia marmarodactyla</i>	sage plume moth	Miami-Dade	DOG DETECTION
<i>Magnolia grandiflora</i>	southern magnolia	<i>Ambrosiophilus atratus</i>	a scolytid beetle	Nassau	COUNTY
<i>Mangifera indica</i>	mango	<i>Bactrocera correcta</i>	guava fruit fly	Palm Beach	REGULATORY INCIDENT
<i>Mangifera indica</i>	mango	<i>Bactrocera correcta</i>	guava fruit fly	Palm Beach	REGULATORY INCIDENT
<i>Manilkara zapota</i>	sapodilla	<i>Banisia argutula</i>	a moth	Miami-Dade	US CONTINENTAL
<i>Manilkara zapota</i>	sapodilla	<i>Epuraea ocularis</i>	sap beetle	Hillsborough	STATE
<i>Matthiola incana</i>	tenweeks stock	<i>Lygus elisus</i>	pale legume bug	Miami-Dade	DOG DETECTION
<i>Petroselinum crispum</i>	parsley	<i>Ceratagallia californica</i>	a leafhopper	Escambia	INTERDICTION INTERCEPTION
<i>Petroselinum crispum</i>	parsley	<i>Ceratagallia californica</i>	a leafhopper	Escambia	INTERDICTION INTERCEPTION
<i>Phoenix dactylifera</i>	date palm	<i>Phoenicococcus marlatti</i>	red date scale	Escambia	INTERDICTION INTERCEPTION
<i>Phoenix dactylifera</i>	date palm	<i>Solenopsis xyloni</i>	southern fire ant	Duval	REGULATORY INCIDENT
<i>Pinus elliotii</i>	slash pine	<i>Coccotrypes aciculatus</i>	a scolytid beetle	Miami-Dade	US CONTINENTAL
<i>Pinus elliotii</i>	slash pine	<i>Xyleborinus andrewesi</i>	a scolytid beetle	Miami-Dade	COUNTY
<i>Pinus</i> sp.		<i>Ambrosiophilus atratus</i>	a scolytid beetle	Suwannee	COUNTY
<i>Pinus</i> sp.		<i>Ambrosiophilus atratus</i>	a scolytid beetle	Hamilton	COUNTY
<i>Pinus</i> sp.		<i>Xylosandrus amputatus</i>	a scolytid beetle	Suwannee	COUNTY
<i>Platanus occidentalis</i>	sycamore	<i>Tibicen lyricen</i>	cicada	Polk	COUNTY
<i>Podocarpus</i> sp.		<i>Neophyllaphis varicolor</i>	multicolored podocarpus aphid	St. Lucie	COUNTY
<i>Poncirus trifoliata</i>	trifoliolate orange	<i>Tetranychus cocosi</i>	spider mite	Orange	HOST
<i>Quercus</i> sp.	oak	<i>Euwallacea fornicatus</i>	tea shothole borer	Manatee	COUNTY
<i>Quercus</i> sp.	oak	<i>Micranopium unicolor</i>	a cerambycid beetle	Pinellas	COUNTY
<i>Quercus stellata</i>	post oak	<i>Xyleborinus andrewesi</i>	a scolytid beetle	Orange	COUNTY
<i>Quercus virginiana</i>	live oak	<i>Amotura hyalinipennis</i>	parasitic wasp	Brevard	COUNTY
<i>Schinus terebinthifolia</i>	Brazilian pepper tree; Florida holly; Christmas berry	<i>Trachelas volutus</i>	a red sac spider	Martin	COUNTY
<i>Sideroxylon alachuense</i>	Clark's buckthorn; silver buckthorn	<i>Ceratotarsonemus scitus</i>	a tarsonemid mite	Alachua	COUNTY AND HOST
<i>Sideroxylon alachuense</i>	Clark's buckthorn; silver buckthorn	<i>Diadlotarsonemus</i> sp.	a tarsonemid mite	Alachua	HOST
undetermined		<i>Catorhintha viridipes</i>	a coreid bug	Broward	COUNTY
<i>Vaccinium</i> sp.		<i>Eotetranychus clitus</i>	spider mite	Alachua	HOST
<i>Withania somnifera</i>	withania; aswagandha	<i>Lema conjuncta</i>	a chrysomelid beetle	Alachua	HOST
		<i>Agrilus dozieri</i>	a buprestid beetle	Highlands	COUNTY
		<i>Agrilus subcinctus</i>	a buprestid beetle	Highlands	COUNTY
		<i>Ambrosiodmus minor</i>	a scolytid beetle	Highlands	COUNTY
		<i>Ambrosiodmus minor</i>	a scolytid beetle	Gadsden	COUNTY
		<i>Ambrosiodmus minor</i>	a scolytid beetle	Alachua	COUNTY
		<i>Ambrosiophilus atratus</i>	a scolytid beetle	Hamilton	COUNTY
		<i>Ambrosiophilus atratus</i>	a scolytid beetle	Alachua	COUNTY
		<i>Asiphonella dactylonii</i>	a root aphid	Collier	COUNTY
		<i>Belionota prasina</i>	ruby-necked jewel beetle	Martin	US CONTINENTAL
		<i>Coccotrypes aciculatus</i>	a scolytid beetle	Broward	COUNTY

Plant Name	Plant Common Name	Arthropod	Arthropod Common Name	County	Records
		<i>Hibana velox</i>	yellow ghost spider	Orange	COUNTY
		<i>Loxosceles rufescens</i>	Mediterranean recluse spider	Orange	REGULATORY INCIDENT
		<i>Loxosceles rufescens</i>	Mediterranean recluse spider	Orange	REGULATORY INCIDENT
		<i>Loxosceles rufescens</i>	Mediterranean recluse spider	Hillsborough	REGULATORY INCIDENT
		<i>Micronecta ludibunda</i>	a water boatman	Collier	COUNTY
		<i>Phidippus regius</i>	regal jumping spider	Santa Rosa	COUNTY
		<i>Pseudomops septentrionalis</i>	pale bordered field cockroach	Suwannee	STATE
		<i>Pygospina reducta</i>	a delphacid planthopper	Collier	US CONTINENTAL
		<i>Tmarus floridensis</i>	a twig crab spider	Okaloosa	COUNTY
		<i>Trotorhombia metachromata</i>	a moth	Hillsborough	COUNTY