

## 福建武夷山飞虱一新属二新种记述

## (同翅目: 蜡蝉总科)

丁锦华

卓文禧

(南京农业大学)

(福建霞浦农科所)

本文记述的飞虱一新属二新种, 均采自福建武夷山自然保护区。新种模式标本保存在南京农业大学植保系。

武夷飞虱属, 新属 *Wuyia* Ding, gen. nov.模式种: *Wuyia miaowensis* Ding, sp. nov.

根据杨仲图编制的台湾飞虱科检索表(1989, 9, 8), 本属似归属于 *Harmalia* Fennah, 它同后者在头顶中侧脊联结的位置和额的形状方面极为相似, 然区别在于体较小, 触角基节长宽相等, 而不是长大于宽, 以及雄生殖节的各部构造完全不同。

庙湾武夷飞虱, 新种 *Wuyia miaowensis* Ding, sp. nov.

体小型; 头顶中长为基宽的1.2倍, 基宽稍大于端宽, 侧缘直, 中侧脊起自侧缘中偏下方, 彼此伸延至端缘稍前处会合, Y形干脊弱, 基隔室基部宽度为其中长的1.85倍; 额基部窄, 中长为最宽处宽的2.5倍, 以近端部1/3处为最宽, 中脊单一或在最基端分叉; 唇基侧面观, 明显低于额面; 复眼圆而大, 单眼小; 触角圆筒形, 稍伸出额的端部, 第一节长与宽近相等, 第二节较粗, 为第一节长的2.3倍; 前胸背板宽于头部包括复眼, 侧脊直, 不伸达后缘; 中胸背板长为头顶和前胸背板长度之和的1.3倍; 后胫距后缘约具齿20枚。

雄虫臀节短小, 环形, 缺端缘和臀刺突, 臀突大; 尾节后开口宽大于长, 背侧角向中部翻折, 侧面观延伸相当长, 背面观则弯曲呈钩状; 膈宽, 背缘中部呈角状伸出, 中部具高耸隆起的纵脊; 阳茎管状, 腹面观, 端部两侧各有一排约6根长刺组成的刺列; 阳基侧突向背侧岔离, 后侧面观, 基半部侧向弯曲并渐细, 顶端尖圆, 侧面观, 内缘中部凹, 端部1/3具一钝形突起, 外缘波曲。

黑褐色; 颜面暗褐, 脊淡黄褐, 头顶、触角和足黄褐, 前翅浅黄褐, 透明。

长翅型雄虫: 体长1.8毫米, 翅长2毫米, 连翅体长2.4毫米。

正模: ♂, 福建武夷山(庙湾), 1983.vii.17, 卓文禧采。

喙突刺缘飞虱, 新种 *Idozurriel rostri* Ding et Zhuo, sp. nov.

小型种; 头顶中长与基宽近相等(1.1: 1), 基宽大于端宽(近1.2: 1), 端缘弧形, 中侧脊起自侧缘中偏下方, 在头顶端部不连接; Y形脊中等明显; 额长为中部最宽处宽的2倍, 端部宽于基部, 侧缘拱, 中脊在中部偏后方分叉; 喙伸达中足转节; 触角圆筒形, 第一节长为端宽的2倍, 第二节为第一节长的1.6倍, 伸近后唇基中部; 前胸背板宽于头部包括复眼, 为头顶长度的1.2倍, 侧脊伸达后缘; 后足胫距约具齿24枚。

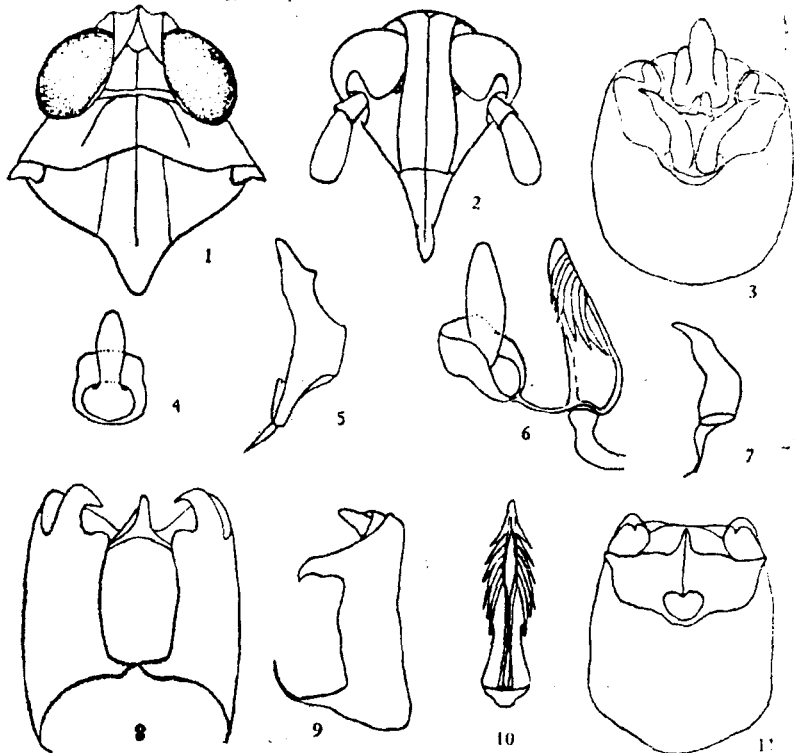


图1—11、庙湾武夷飞虱，新属新种 *Wuyia miaowensis* Ding, gen. et sp. nov.  
 1. 头胸背面 2. 颊和唇基 3. 雄生殖节后面观 4. 臀节 5. 左阳基侧观 6. 臀节和阳茎左侧面  
 7. 左阳基侧突后面观 8. 尾节后面观 9. 尾节右侧面 10. 阳茎腹面观 11. 雌

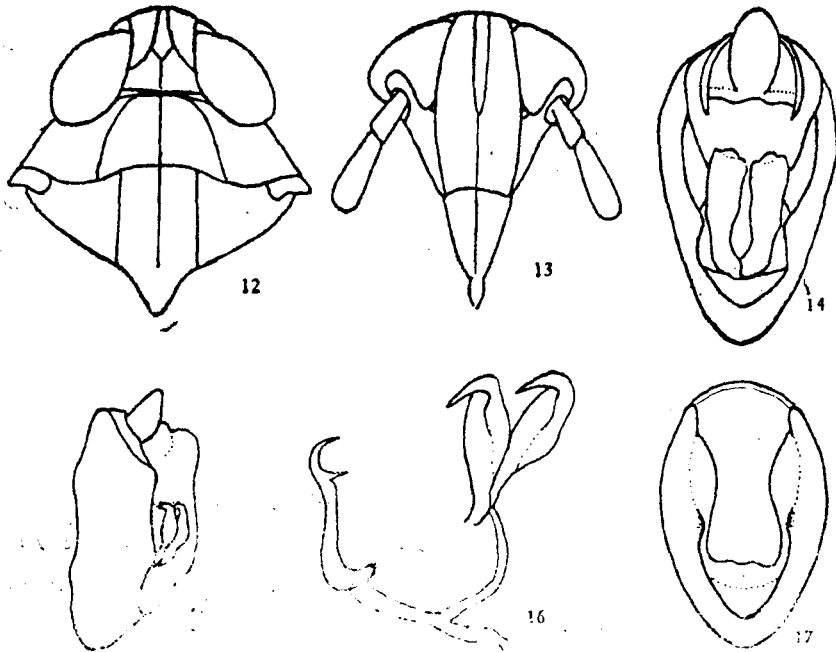


图12—17、喙突刺缘飞虱，新种 *Idozuriel rostri* Ding et Zhuo, sp. nov.  
 12. 头胸背面 13. 颊和唇基 14. 雄生殖节后面观 15. 雄生殖节左侧面 16. 阳茎和阳基侧突 17. 雌

雌虫臀节短，端缘宽，波曲，端侧角不伸出，臀突宽大，尾节后开口长卵圆形，侧缘弧形，腹缘深凹，膈孔开放；阳茎细，弯曲，近倒“3”字形，顶端尖细，内缘在端部弯曲处伸出一小刺；阳基侧突并列，宽而长，端部向前急弯如喙状，侧面观似鸟体形。

黑褐色，但头顶和前胸背板侧脊间浅棕稍暗，触角、喙、足除基节外为黄褐，前翅浅灰黄，脉暗褐，极明显。

长翅型雄虫：体长2.1毫米，翅长2.1毫米，连翅体长2.7毫米。

正模：♂，福建武夷山（隐屏峰），1983.viii.26，卓文禧采。

本种额中脊分叉深，前胸背板侧脊伸达后缘等特征，显示与 *InozurIEL samiator* Fennah 近缘，但额较长，后足胫距的齿数多，以及雄外生殖器的各部构造与后种不同。

### 参 考 文 献

- Fennah, R.G. 1975 Homoptera, Fulgoroidea Delphacidae from Ceylon. *Ent. Scand. Suppl.* 4, 79-136.
- Yang Chungtu 1989 Delphacidae of Taiwan (11) (Homoptera, Fulgoroidea). *NSC Special Publications* No. 6, Taiwan, 1-334.

## A NEW GENUS AND TWO NEW SPECIES OF DELPHACIDA FROM WUYISHAN NATURE RESERVE OF FUJIAN (HOMOPTERA, FULGOROIDEA)

Ding Jinhua (*Nanjing Agricultural University*)

Zhuo wenxi (*Xiapu Institute of Agricultural Sciences*)

A new genus and two new species of Delphacidae are herein described as new to science. The type specimens are deposited in the Nanjing Agricultural University.

*Wuyia* Ding, gen. nov.

This genus runs to *Harmalia* Fennah in Yang's key (1989, p. 8) It resembles the latter in the shape of vertex and frons, but differs in smaller body size, antennae with basal segment as long as wide at apex (longer than wide in *Harmalia*), and in the structure of the male genitalia,

Type species: *Wuyia miaowanensis* Ding, sp. nov.

*Wuyia miaowensis* Ding, sp. nov.

Species small (Length of male about 1.8 mm). Head including eyes narrower than pronotum; vertex longer than broad at base (nearly 1.2: 1), submedian carinae meeting at or slightly before apex of head; frons narrowed at base, longer in middle line than wide at widest part (2.5: 1), widest at apical third, median carina simple or forked base; antennae slightly surpassing frontoclypeal suture by 1st segment nearly as long as wide, second segment longer than first (about 2.3: 1), lateral carinae of pronotum not attaining hind margin. Posttibial spur with about 20 teeth.

Anal segment of male short and small, ring-like, lateroapical angles absent; pygofer in profile with laterodorsal angles exceptionally strongly produced caudad in a narrow lobe, which in dorsal view is hook-shaped. Diaphragm broad, dorsal margin angulately produced medially, with median longitudinal carina. Aedeagus tubular in ventral view, each side with six long spines in a row at apex. Genital styles divergent in laterocaudal view, basal half broad, apical half slightly directed laterad and narrowing distad, in lateral view with inner margin concave at middle, and a small blunt process at apical third, outer margin sinuate.

General color dark brown, but face somewhat fuscous with pale yellowish brown carinae; vertex, antennae and legs yellowish brown. Tegmina hyaline.

Macrop. f. ♂ Length 1.8 mm, includ. teg. 2.4 mm, tegmen 1.2 mm.

Holotype: ♂, Fujian (Wuyishan), 17.viii.1983.

*Indozurriel rostri* Ding et Zhuo, sp. nov.

This new species resembles *Indozurriel samiator* Fennah in size and general appearance, but differs from the latter in frons longer in middle line than widest part, about 2: 1 (1.5: 1 in *saniator*), the post-tibial spur with about 24 teeth (11 in *saniator*), and in structural details of the male genitalia.

Macrop. f. ♂, Length 2.1 mm, includ. teg. 2.7 mm, tegmen 2.1 mm.

Holotype: ♂, Fujian (Wuyishan), 17.viii, 1983.