

飞虱科两新属记述

(同翅目:飞虱科)

丁锦华

(南京农学院)

本文记述飞虱科的两个新属,均采自我国南方。新种模式标本保存在南京农学院植保系。

片飞虱属 *Platycorpus* 新属

体扁平;头顶长大于基部宽,端缘弧形,中侧脊在头顶端部相遇,致呈一倒置的Y形;复眼大;额长为最宽处宽的1.5倍,以中部为最宽,中脊单一,基部宽于端部;触角圆筒形,伸近后唇基中部,第一节长宽近相等,第二节为第一节长度的3倍;唇基明显低陷;前胸背板短于头顶中长,二侧脊前半近平行,后半向侧方强弯,不伸达后缘;中胸背板短于头顶和前胸背板长度之和。

模式种 儂片飞虱 *Platycorpus nadaensis* 新种

本属从身体扁平 and 触角的型式看,较接近于扁飞虱属 *Eocuryssa* Muir, 但后者头顶宽大于长,头顶中侧脊在近端缘处不共柄,复眼小,以及前胸背板侧脊延伸等情况,与前者易于区别。

儂片飞虱 *Platycorpus nadaensis* 新种(图1—7)

连翅体长 雄 3.9 毫米,雌 4.7 毫米;体长:雄 2.5 毫米,雌 3.6 毫米;翅长:雄 2.9 毫米,雌 3.7 毫米。

头顶中长为基宽的1.2倍,侧面观,与额圆曲相接,基宽等于端宽,侧缘凹,多少向端部扩张,中侧脊起自侧缘中偏基部,彼此延伸至复眼前缘同一水平处相遇,致形成一相当长的共柄,Y形脊弱,头顶基隔室后缘宽度为其中长的1.7倍,为其最大长度的1.5倍;额自侧面观隆起较高,侧缘弧形;唇基与额的端部同宽;喙短,勉强伸达中足转节;前胸背板后缘呈钝角状向前深凹;中胸背板短小,长为头顶和前胸背板长度之和的0.9倍;后足跗节稍长于其余两跗节长度和,胫距后缘具齿16枚。

淡黄色;头顶基半淡褐色,端半中侧脊和侧脊间黑色;额脊间具有前宽后窄的纵纹,颊沿斜脊和单眼的上方亦为黑色;触角第一节腹面除内侧缘、第二节腹面的一条纵斜纹为黑色,其余为淡褐色;前胸背板侧缘的一条线纹及中胸侧板的外侧缘暗褐色,并位于同一线上,后胸侧板暗褐色;前足基节基部具一暗褐色小斑,前、中足胫节的后侧缘暗褐色,后足腿节及腹部腹面二侧缘有少许暗褐色斑点;前翅淡黄白色,相当透明,脉与翅面同色,其上列生微细的颗粒状突起;雄虫生殖节后面开口的腹缘及阳基侧突的基部黑褐色,阳基侧突

本文于1982年5月收到。

本文图由安徽农学院葛克鹏同志复墨,谨此致谢。

的端部深褐色, 臀刺黄褐色, 膈黑褐色。

雌虫体较大, 位于产卵器两侧的 second 载瓣片的端部为暗褐色, 余同雄虫。

正模♂, 配模 1♀, 广东(海南岛), 1974, IX. 30, 丁锦华采于禾本科杂草上。

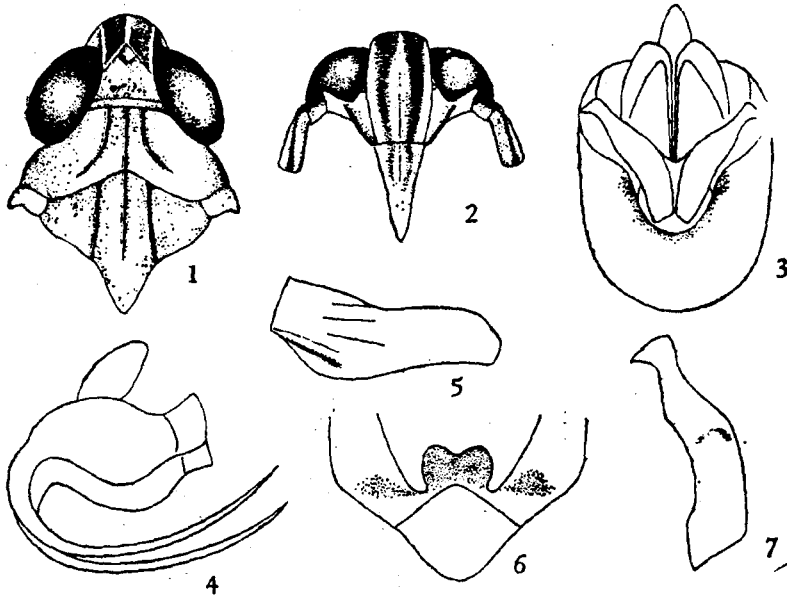


图 1—7 儋片飞虱 *Platyrcopus nadaensis* sp. nov.

1. 头胸背面 2. 头部腹面 3. 雄生殖节后面观
4. 胫节侧面 5. 阳茎 6. 膈 7. 左阳基侧突。

华飞虱属 *Sinoperkinsiella* 新属

头顶中长约与基宽相等, 明显地向端部收狭, 侧面观, 与额弯圆相连, 端缘平截, 中侧脊在头顶不相遇, Y 形脊清晰; 额在基部复眼间显然狭窄, 自单眼以下二侧缘近平行, 端部宽于基部, 额中长为最宽处宽的 2.6 倍, 以离基部 1/3 处为最宽, 中脊约在离端部 3/4 或在近复眼中部同一线上分叉; 触角较扁平, 稍伸过额唇基缝, 第一节渐向端部加宽, 长大于端宽, 第二节长筒形, 小于第一节长度的 2 倍; 前胸背板宽于头部包括复眼, 侧脊弧曲并伸达后缘; 后足胫距后缘齿数少于 30 枚。

模式种 囊颖草飞虱 *Sinoperkinsiella sacciolepis* 新种

本属触角扁平, 且第一节向端部扩宽, 似接近于扁角飞虱属 *Perkinsiella* Kirkaldy 但后者头部和额较宽, 额中脊在复眼下缘同一水平上分叉, 前胸背板侧脊后端向后侧方弯曲, 不伸达后缘, 距后缘齿数多于 30 枚, 以及雄生殖节的构造等明显不同于前者。

囊颖草飞虱 *Sinoperkinsiella sacciolepis* 新种 (图 8—18)

长翅型雄 连翅体长 3.5 毫米, 体长 2.2 毫米, 翅长 2.9 毫米; 短翅型雄: 体长 2.1 毫米, 翅长 0.7 毫米。

头顶基宽大于端宽 1.5 倍, 基隔室后缘宽度为 Y 形脊主干长的 2.1 倍, 为该室最大长度的 1.8 倍; 从侧面观, 额和后唇基平坦, 前唇基较隆起; 唇基基部稍宽于额的端部, 后唇

基中长为基宽的 1.3 倍;喙伸达后足基节;胸部背板上的脊隆起清晰,且前胸背板侧区中部具一分枝状的脊,中胸背板长为头顶和前胸背板长度之和的 1.3 倍,三脊平行,中脊伸至小盾片端部;后足基跗节稍长于另两跗节的长度和;距后缘具微齿 28 枚。

体褐色,但胸部背板上的脊颜色稍浅,触角第一节背面黑褐色,颊具数对淡色圆斑、颊色略深暗,中域具 3—4 个连成一线的淡色斑,前中胸侧脊外方稍带暗色,后足腿节内侧近稜脊处具淡黑褐色纵条纹,前翅翅脉尤以端脉具暗褐纹,极为明显,翅斑暗褐色,腹背中部有一些黑褐色斑。短翅型前翅的脉纹与翅面同色,腹背中线和二侧区的中部除第 4—5 节外为淡黄褐色,第 4—5 节侧区的中部具黑褐色斑块,以第 5 节上的较大,前翅伸达第 5 腹节后缘,余同长翅型。

寄主 囊颖草 *Sacciolepis indica*。

正模♂(长翅型),副模 2♂♂(短翅型),广西玉林,1974. V. 10, 广西玉林地区农科所采。

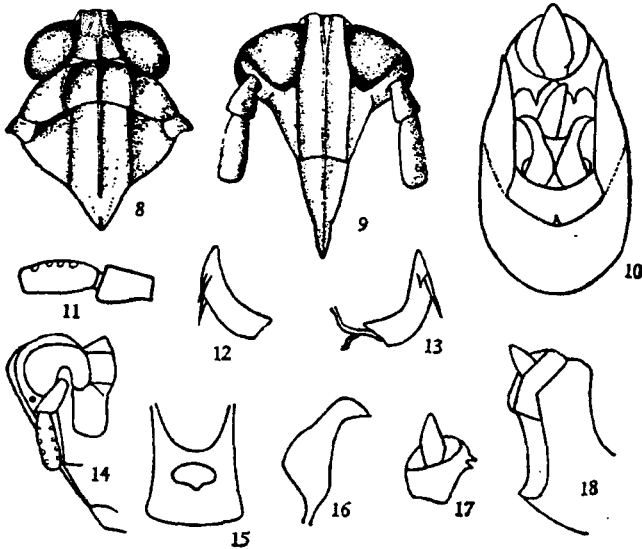


图 8—18 囊颖草飞虱 *Sinoperkinsiella saccolepis* sp. nov.

8. 头胸背面 9. 头部腹面 10. 雄生殖节后面观 11. 触角 12. 阳茎右侧
13. 阳茎左侧 14. 头部和前胸背板侧面 15. 膈 16. 右阳茎侧突
17. 臂节侧面 18. 雄生殖节侧面。

TWO NEW GENERA OF DELPHACIDAE FROM CHINA
(HOMOPTERA: FULGOROIDEA)

DING JIN-HUA

(Nanjing Agricultural College)

The present paper reports two new genera of the Delphacidae collected from China. The type specimens are deposited in the Nanjing Agricultural College.

***Platycorpus* gen. nov.**

Body oblate; vertex longer than broad at base (1.2: 1), anterior margin convex, submedian carinae united on apical part of head, eyes large; frons in middle line longer than wide at widest part (1.5: 1), widest at middle, obviously wider at base than at apex, antennae cylindrical and surpassing frontoclypeal suture, with basal segment approximately as long as broad at apex, second segment 3 times the length of first; clypeus depressed; pronotum shorter than vertex, with lateral carinae subparallel in anterior half, strongly diverging in posterior half, not attaining hind margin; mesonotum shorter than vertex and pronotum combined (0.9: 1).

Type species, *Platycorpus nadaensis* sp. nov.

The type species of the genus, in oblate shape of the body and proportion of the antennae, resembles to *Eoerysa* Muir, but differs in its long vertex and large eyes, the pronotal lateral carinae not reaching hind margin and the submedian carinae united on apical part of vertex forming a inverted Y-shape.

***Platycorpus nadaensis* sp. nov.** (figs. 1—7)

Yellow; vertex testaceous in basal half, black in sublateral areas of apical half; frons in intercarinal areas, broader anteriorly, narrowly posteriorly, above ocelli and along oblique carinae of genae, black; lower surface of first antennae segment except inner margins, and an oblique stripe on second, black, remaining parts of antennae, testaceous; clypeus on each side of median carina, pro- and mesotibiae on posterior lateral margin, a stripe near lateral margins of pronotum, metapleura, a spot on base of procoxae and some spots on postfemura and on lateral margins of abdominal sternites, fuscous; tegmina yellowish white, veins concolorous, with light granules.

Macrop. f.: Length ♂ 2.5 mm., ♀ 3.6 mm., includ. teg. ♂ 3.9 mm., ♀ 3.6 mm., tegmen ♂ 2.9 mm., ♀ 3.7 mm.

Holotype: ♂, allotype ♀, Guangdong, 30. IX. 1974, collected by Ding Jin-hua.

***Sinoperkinsiella* gen. nov.**

Vertex as long as broad at base, obtusely rounded into frons, obviously narrowed to apex, apical margin transverse, Y-shaped distinct; frons longer than broad at widest part (2.6: 1), widest at 1/3 from base, wider at apex than at base, lateral margins concave between eyes, and almost straight below level of ocelli, median carina forked slightly above level of middle of eyes; antennae flattened, reaching to level of middle of postclypeus, with basal segment expanded distally, second segment not quite twice as long as first; pronotum slightly wider than head with eyes, lateral carinae curving inward and reaching

the hind margin; posttibial spur with 28 teeth.

Type species, *Sinoperkinsiella saccolepis* sp. nov.

This genus differs from *Perkinsiella* Kirkaldy in the head and frons much longer, the forked position of the median carina of the frons, and the lateral carina of pronotum shallowly curved, reaching hind margin.

Sinoperkinsiella saccolepis sp. nov. (figs. 8—18)

Browish, but carinae of thorax slightly paler, frons and genae with some pale round spots; veins of tegmina, a spot on margin at apex of common claval vein, some spots on middle of abdomen, fuscous. Brachypterous tegmina brownish yellow with concolorous veins; abdominal tergites in middle line, and in middle parts of lateral areas except fourth and fifth tergites, yellowish, middle parts of lateral areas of fourth and fifth abdominal tergites, fuscous.

Host plant: *Saccolepis indica*.

Holotype: ♂, paratype 2 ♂♂, Guangxi, 10. V. 1974, collected by Yulin Prefecture Institute of Agriculture.